

## Product datasheet for **RC209930**

### CCDC76 (TRMT13) (NM\_019083) Human Tagged ORF Clone

#### Product data:

Product Type:	Expression Plasmids
Product Name:	CCDC76 (TRMT13) (NM_019083) Human Tagged ORF Clone
Tag:	Myc-DDK
Symbol:	CCDC76
Synonyms:	CCDC76
Mammalian Cell Selection:	Neomycin
Vector:	pCMV6-Entry (PS100001)
E. coli Selection:	Kanamycin (25 ug/mL)



[View online »](#)

**ORF Nucleotide Sequence:**

>RC209930 ORF sequence  
 Red=Cloning site Blue=ORF Green=Tags(s)

TTTTGTAATACGACTCACTATAGGGCGGCCGGGAATTCGTCGACTGGATCCGGTACCGAGGAGATCTGCC  
 GCC**CGCATCGCC**

ATGGCGACCTCCGCGACGTGCGCCGACGCGCTGGTTTTCCAGCTGAGGGTAGATGCGGTTACTATGTGG  
 AAAAGAAGAAACGGTTCTGCAGGATGGTGGTGGCCGAGGAAAAAGATTTTGTGGTGAACACGCTGGAGC  
 CATGGAGGAAGAAGATGCTCGGAAAAAGAATCCTGTGTCCTTTAGATCCAAAAACACAGTATATGAAGAT  
 CAACTAGCAAAGCATTGAAAAATGTAACCAAGAGAGAAACAAAACCTGATTTCTATATTCAAGATA  
 TTAATGCAGGCTTAAGAGATGAAACAGAAATACCTGAACAATTAGTTCCAATTTCTCTCTATCTGAAGA  
 GCAGTTGGAAGTTAATTAAGAAATTGAGAAAAGCAAGTGAAGGCTGAATTCTACACTAAAGATCAT  
 ATATGTCCCATCCAGCATTACACGATGCACTTAATGACCCTAAAAATGGCGATTCTGCAACCAAGCACC  
 TGAACAGCAGGCTTCTATTTAGGTAACATTGAAAAATTAAGTTACTTGGTCCAAGAAGATGCTTTGT  
 TGAGTTTGGAGCGGAAAGGGAAAAATTATCTCATTGGGTTGATATTGCCTTAAAAGATGCTGAAAAAGTT  
 CACTTCATCCTAGTGAAAGGTTGACCACAAGATTCAAGGTGGATGGAAAACACAGAAAGAAAAATTCAG  
 TGTTTGAAGACTTCAAATTGATTTCAACACTTGTGTTTGAACAAGATTCTGTGCTAAGAGAAGAAAA  
 ACTACCTGTGGTAGGAATTGAAAGCATCTGTGTGGTATGGCAACAGATCTGCATTACGATGTTTGGTT  
 GAAACCTATGCTGCCAGTTTTGAGGAAAGGAATGAAGAACCTTTAGCCAAACGCATAAAGAATGATAAAA  
 CAGAAAAAGAAATTTACACTTTGGCCAAGGAAGGAAATGAAAAAATGTCCAGAGAAGTGGAACCTGT  
 GGCTGGCATTGTTATTGCACTCTGTTGTACCACAGGTGATGGAGACATTATGTGGGCAAAGAATAT  
 TTCAGGGCTTAGGCCTTGGAGCAGTGAATCCATTATTTCCAGCGAATGAGTAGTTGGCAACTGTG  
 GGATGCGGAAAAACATCTTTGAAACCTCAAATAGTACCACAAGAGGCAAGATAATCAGAATGATGATAG  
 TGAAGAGCATGATGATGGAGGATACAGAATCACAGATGATGGCGCTGATTGTTTGCCTGGGCTTCTAGT  
 GTTGAAGAAAAGAAGAAATAGGGCATCTTTGTAATTGCTGATTGACCAAGGTGCAATCCAGTATTGTC  
 AGCAGAAGGGATTAGTCTGCTTTGCAGTACTATACAGACCCTCTGGTGTCTTTGGAAATGTTTTGTT  
 AACTGCTTACCAAATCATTCTTCATCACCAGAAACAAGTCT

**ACGCGT**ACGCGGCCGCTCGAGCAGAAACTCATCTCAGAAGAGGATCTGGCAGCAATGATATCCTGGATT  
 ACAAGGATGACGACGATAAGGTTTAA

**Protein Sequence:**

>RC209930 protein sequence  
 Red=Cloning site Green=Tags(s)

MATSATSPHAPGFPAEGRGYYVEKKRFRMVAAGKRFCEHAGAMEEEDARKRILCPLDPKHTVYED  
 QLAKHLKCNREKPKPDFYIQDINAGLRDETEIPEQLVPISSLSEEQLEKLIKLRKASEGLNSTLKD  
 IMSHPALHDALNDPKNGDSATKHLKQASILGNIEMLKLLGPRRCFVEFGAGKGLSHWVDIALKDAEKV  
 HFILVEKVTTRFKVDGKHRKNSVFERLQIDIQHLCLNIPVLRREEKLPVVGIGKHLCGMATDLALRCLV  
 ETYAASFEERNEEPLAKRIKNDKTEKEIYTLAKEGNEKNVPEKWNPVAGIVIALCCHHRCDWRHYGKEY  
 FRALGLGAVEFHVFQRMSSWATCGMRKTSLETSNSTTKRQDNQNDSEEHDDGGYRITDDGADCLPGLLS  
 VEEKKKIGHLCKLLIDQGRIQYLQQKGFSPALQYYTDPLVSLLENVLLTALPNHSSSPETTA

**TR**TRPLEQKLISEEDLAANDILDYKDDDDKV

**Chromatograms:**

[https://cdn.origene.com/chromatograms/mk6760\\_f03.zip](https://cdn.origene.com/chromatograms/mk6760_f03.zip)

**Restriction Sites:**

SgfI-MluI

**Cloning Scheme:**

Cloning sites used for ORF Shutting:



\* The last codon before the Stop codon of the ORF

**ACCN:** NM\_019083

**ORF Size:** 1443 bp

**OTI Disclaimer:** The molecular sequence of this clone aligns with the gene accession number as a point of reference only. However, individual transcript sequences of the same gene can differ through naturally occurring variations (e.g. polymorphisms), each with its own valid existence. This clone is substantially in agreement with the reference, but a complete review of all prevailing variants is recommended prior to use. [More info](#)

**OTI Annotation:** This clone was engineered to express the complete ORF with an expression tag. Expression varies depending on the nature of the gene.

**Components:** The ORF clone is ion-exchange column purified and shipped in a 2D barcoded Matrix tube containing 10ug of transfection-ready, dried plasmid DNA (reconstitute with 100 ul of water).

**Reconstitution Method:**

1. Centrifuge at 5,000xg for 5min.
2. Carefully open the tube and add 100ul of sterile water to dissolve the DNA.
3. Close the tube and incubate for 10 minutes at room temperature.
4. Briefly vortex the tube and then do a quick spin (less than 5000xg) to concentrate the liquid at the bottom.
5. Store the suspended plasmid at -20°C. The DNA is stable for at least one year from date of shipping when stored at -20°C.

**RefSeq:** [NM\\_019083.1](#), [NP\\_061956.1](#)
**RefSeq Size:** 3157 bp

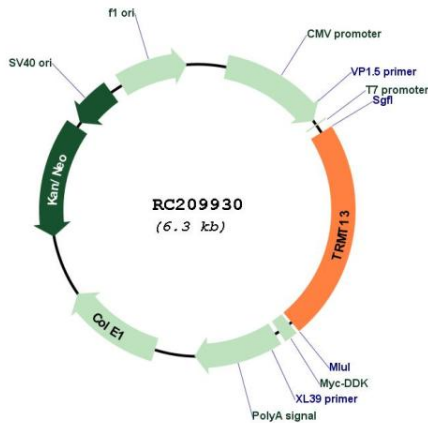
**RefSeq ORF:** 1446 bp

**Locus ID:** 54482

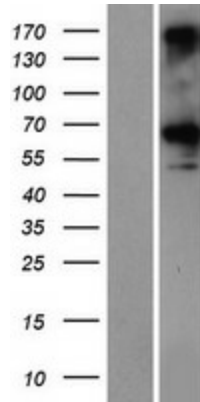
**UniProt ID:** [Q9NUP7](#)
**Cytogenetics:** 1p21.2

**Domains:** DUF715  
**MW:** 54.3 kDa  
**Gene Summary:** tRNA methylase which 2'-O-methylates cytidine(4) in tRNA(Pro) and tRNA(Gly)(GCC), and adenosine(4) in tRNA(His).[UniProtKB/Swiss-Prot Function]

**Product images:**



Circular map for RC209930



Western blot validation of overexpression lysate (Cat# [LY412766]) using anti-DDK antibody (Cat# [TA50011-100]). Left: Cell lysates from untransfected HEK293T cells; Right: Cell lysates from HEK293T cells transfected with RC209930 using transfection reagent MegaTran 2.0 (Cat# [TT210002]).