

Product datasheet for RC209927

RAB1B (NM_030981) Human Tagged ORF Clone

Product data:

Product Type: Expression Plasmids
 Product Name: RAB1B (NM_030981) Human Tagged ORF Clone
 Tag: Myc-DDK
 Symbol: RAB1B
 Mammalian Cell Selection: Neomycin
 Vector: pCMV6-Entry (PS100001)
 E. coli Selection: Kanamycin (25 ug/mL)
 ORF Nucleotide Sequence: >RC209927 ORF sequence
 Red=Cloning site Blue=ORF Green=Tags(s)

TTTTGTAATACGACTCACTATAGGGCGGCCGGAATTCGTCGACTGGATCCGGTACCGAGGAGATCTGCC
 GCC**CGATCGCC**

ATGAACCCGAATATGACTACCTGTTTAAGCTGCTTTTGATTGGCGACTCAGGCGTGGGCAAGTCATGCC
 TGCTCTGCGGTTTGCTGATGACACGTACACAGAGAGCTACATCAGCACCATCGGGTGGACTTCAAGAT
 CCGAACCATCGAGCTGGATGGCAAACTATCAAACCTCAGATCTGGGACACAGCGGGCCAGGAACGGTTC
 CGGACCATCACTCCAGCTACTACCGGGGGGCTCATGGCATCATCGTGGTGTATGACGTCCTGACCAGG
 AATCCTACGCCAACGTGAAGCAGTGGCTGCAGGAGATTGACCGCTATGCCAGCGAGAACGTAAGTAAAGT
 CCTGGTGGGCAACAAGAGCGACCTCACCAAGAAAGGTGGTGGACAACACCACAGCCAAGGATTTGCA
 GACTCTCTGGGCATCCCTTCTTGGAGACGAGCGCAAGAATGCCACCAATGTCGAGCAGCGTTTATGA
 CCATGGCTGCTGAAATCAAAAAGCGGATGGGGCTGGAGCAGCCTCTGGGGCGAGCGGCCAATCTCAA
 GATCGACAGCACCCCTGTAAGCCGGCTGGCGGTGGCTGTTGC

ACGCGTACGCGGCCGCTCGAGCAGAACTCATCTCAGAAGAGGATCTGGCAGCAATGATATCCTGGATT
 ACAAGGATGACGACGATAAGGTTTAA

Protein Sequence: >RC209927 protein sequence
 Red=Cloning site Green=Tags(s)

MNPEYDYLFKLLLIGDSGVGKSCLLLRFADDTYTESYISTIGVDFKIRTIELDGKTIKLIQIWDTAGQERF
 RTITSSYYRGAHGIIVVYDVTDQESYANVKQWLQEI DRYASENVNKL LVGNKSDL TTKKVDNTTAKEFA
 DSLGIPFLETSAKNATNVEQAFMTMAAEIKKRMGPGAASGGERPNLKIDSTPVKPAAGGGCC

TRTRPLEQKLI SEEDLAANDILDYKDDDDKV

Chromatograms: https://cdn.origene.com/chromatograms/mk6087_e12.zip



[View online »](#)

Restriction Sites: SgfI-MluI

Cloning Scheme:



ACCN: NM_030981

ORF Size: 603 bp

OTI Disclaimer: The molecular sequence of this clone aligns with the gene accession number as a point of reference only. However, individual transcript sequences of the same gene can differ through naturally occurring variations (e.g. polymorphisms), each with its own valid existence. This clone is substantially in agreement with the reference, but a complete review of all prevailing variants is recommended prior to use. [More info](#)

OTI Annotation: This clone was engineered to express the complete ORF with an expression tag. Expression varies depending on the nature of the gene.

Components: The ORF clone is ion-exchange column purified and shipped in a 2D barcoded Matrix tube containing 10ug of transfection-ready, dried plasmid DNA (reconstitute with 100 ul of water).

- Reconstitution Method:**
1. Centrifuge at 5,000xg for 5min.
 2. Carefully open the tube and add 100ul of sterile water to dissolve the DNA.
 3. Close the tube and incubate for 10 minutes at room temperature.
 4. Briefly vortex the tube and then do a quick spin (less than 5000xg) to concentrate the liquid at the bottom.
 5. Store the suspended plasmid at -20°C. The DNA is stable for at least one year from date of shipping when stored at -20°C.

Note: Plasmids are not sterile. For experiments where strict sterility is required, filtration with 0.22um filter is required.

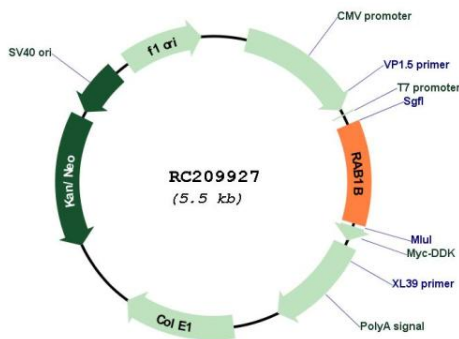
RefSeq: [NM_030981.3](#)

RefSeq Size: 1955 bp

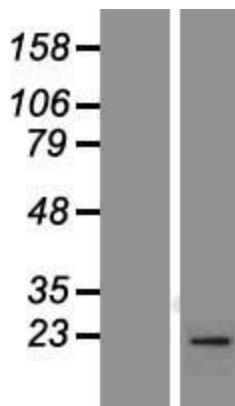
RefSeq ORF: 606 bp

Locus ID:	81876
UniProt ID:	Q9H0U4
Cytogenetics:	11q13.2
Domains:	ras, RAN, RAS, RHO, RAB, ARF
Protein Families:	Transcription Factors
MW:	22.2 kDa
Gene Summary:	Members of the RAB protein family, such as RAB1B, are low molecular mass monomeric GTPases localized on the cytoplasmic surfaces of distinct membrane-bound organelles. RAB1B functions in the early secretory pathway and is essential for vesicle transport between the endoplasmic reticulum (ER) and Golgi (Chen et al., 1997 [PubMed 9030196]; Alvarez et al., 2003 [PubMed 12802079]).[supplied by OMIM, Jan 2009]

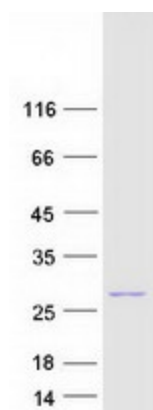
Product images:



Circular map for RC209927



Western blot validation of overexpression lysate (Cat# [LY410580]) using anti-DDK antibody (Cat# [TA50011-100]). Left: Cell lysates from untransfected HEK293T cells; Right: Cell lysates from HEK293T cells transfected with RC209927 using transfection reagent MegaTran 2.0 (Cat# [TT210002]).



Coomassie blue staining of purified RAB1B protein (Cat# [TP309927]). The protein was produced from HEK293T cells transfected with RAB1B cDNA clone (Cat# RC209927) using MegaTran 2.0 (Cat# [TT210002]).