

Product datasheet for RC209924

TCEAL6 (NM_001006938) Human Tagged ORF Clone

Product data:

Product Type: Expression Plasmids
Product Name: TCEAL6 (NM_001006938) Human Tagged ORF Clone
Tag: Myc-DDK
Symbol: TCEAL6
Synonyms: Tceal3; WEX2
Mammalian Cell Selection: Neomycin
Vector: pCMV6-Entry (PS100001)
E. coli Selection: Kanamycin (25 ug/mL)
ORF Nucleotide Sequence: >RC209924 ORF sequence
 Red=Cloning site Blue=ORF Green=Tags(s)

TTTTGTAATACGACTCACTATAGGGCGGCCGGAATTCGTCGACTGGATCCGGTACCGAGGAGATCTGCC
 GCC**CGATCGCC**

ATGGAGAAACCCTACAATAAAAAATGAAGGAAACCTGGAAAACGAGGGAAAGCCAGAAGATGAAGTAGAGC
 CTGATGATGAAGGAAAGTCAGACGAGGAAGAAAAGCCAGACGCGGAGGGGAAAGACAGAATGCGAGGGAAA
 GCGAAAGGCTGAGGGAGAGCCAGGTGATGAGGGACAACCTGGAAGATAAGGGAAGCCAGGAAAAGCAGGGC
 AAGTCCGAAGGTGAGGGCAAGCCACAAGGCGAGGGCAAGCCAGCCTCCCAGGCAAAGCCAGAGGGCCAGC
 CGCGGGCCGCGAAAAGCGCCCGCTGGAGATTATGTGCCCGGAAAGCAAAAAGAAAAACAGACAGGGG
 GACGGACGATCCCCCAAGGACTCTCAGGAGGACTTACAGGAAAGGCATCTGAGCAGTGAGGAGATGATG
 AGAGAATGTGGAGATGTGTCAAGGGCTCAGGAGGACTAAGGAAAAAACAGAAAATGGGTGGTTTTTCATT
 GGATGCAAAGAGATGTACAGGATCCATTCGCCCAAGGGGCAACGGGGTGTGAGGGGAGTGAGGGGTGG
 AGGTAGGGGCCAAAGAGGCTTACACGATATCCCATACCTT

ACGCGTACGCGGCCGCTCGAGCAGAACTCATCTCAGAAGAGGATCTGGCAGCAATGATATCCTGGATT
 ACAAGGATGACGACGATAAGGTTTAA

Protein Sequence: >RC209924 protein sequence
 Red=Cloning site Green=Tags(s)

MEKPYNKNEGNLENEGKPEDEVEPDDEGKSDEEEKPDAEGKTECEGKRKAEGEPGDEGQLEDKGSQEKQG
 KSEGEKPKQEGKPPASQAKPEGQPRAAEKRPAGDYVPRKAKRKTDRGTDSPKDSQEDLQERHLSSEEMM
 RECGDVSRAQEELRKKQKMGGFHWMQRDVQDPFAPRGQRGVRGVRGGGRGQRGLHDIPYL

TRTRPLEQKLISEEDLAANDILDYKDDDDKV



Chromatograms: https://cdn.origene.com/chromatograms/mk6363_h03.zip

Restriction Sites: SgfI-MluI

Cloning Scheme:



ACCN: NM_001006938

ORF Size: 1662 bp

OTI Disclaimer: The molecular sequence of this clone aligns with the gene accession number as a point of reference only. However, individual transcript sequences of the same gene can differ through naturally occurring variations (e.g. polymorphisms), each with its own valid existence. This clone is substantially in agreement with the reference, but a complete review of all prevailing variants is recommended prior to use. [More info](#)

OTI Annotation: This clone was engineered to express the complete ORF with an expression tag. Expression varies depending on the nature of the gene.

Components: The ORF clone is ion-exchange column purified and shipped in a 2D barcoded Matrix tube containing 10ug of transfection-ready, dried plasmid DNA (reconstitute with 100 ul of water).

Reconstitution Method:

1. Centrifuge at 5,000xg for 5min.
2. Carefully open the tube and add 100ul of sterile water to dissolve the DNA.
3. Close the tube and incubate for 10 minutes at room temperature.
4. Briefly vortex the tube and then do a quick spin (less than 5000xg) to concentrate the liquid at the bottom.
5. Store the suspended plasmid at -20°C. The DNA is stable for at least one year from date of shipping when stored at -20°C.

RefSeq: [NM_001006938.1](#), [NP_001006939.1](#)

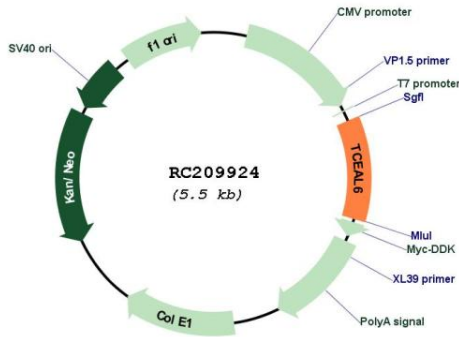
RefSeq Size: 1532 bp

RefSeq ORF: 552 bp

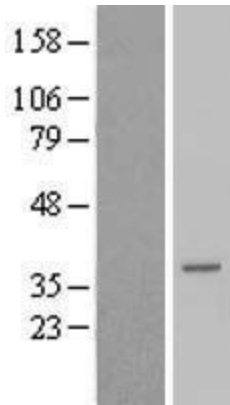
Locus ID: 158931

Cytogenetics: Xq22.1
 MW: 22.3 kDa

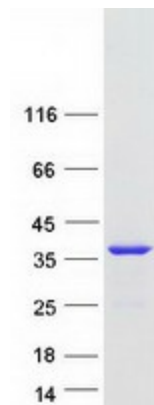
Product images:



Circular map for RC209924



Western blot validation of overexpression lysate (Cat# [LY423556]) using anti-DDK antibody (Cat# [TA50011-100]). Left: Cell lysates from untransfected HEK293T cells; Right: Cell lysates from HEK293T cells transfected with RC209924 using transfection reagent MegaTran 2.0 (Cat# [TT210002]).



Coomassie blue staining of purified TCEAL6 protein (Cat# [TP309924]). The protein was produced from HEK293T cells transfected with TCEAL6 cDNA clone (Cat# RC209924) using MegaTran 2.0 (Cat# [TT210002]).