

Product datasheet for RC209922

Ribosomal protein L26 (RPL26) (NM_000987) Human Tagged ORF Clone

Product data:

Product Type: Expression Plasmids
Product Name: Ribosomal protein L26 (RPL26) (NM_000987) Human Tagged ORF Clone
Tag: Myc-DDK
Symbol: RPL26
Synonyms: DBA11; L26
Vector: pCMV6-Entry (PS100001)
E. coli Selection: Kanamycin (25 ug/mL)
Cell Selection: Neomycin
ORF Nucleotide Sequence: >RC209922 ORF sequence
 Red=Cloning site Blue=ORF Green=Tags(s)

TTTTGTAATACGACTCACTATAGGGCGCCGGAATTCGTCGACTGGATCCGGTACCGAGGAGATCTGCC
 GCC**CGATCGCC**

ATGAAGTTTAATCCCTTTGTGACTTCGACCGAAGCAAGAATCGAAAAGGCATTTCAATGCACCTCCC
 ACATTCGAAGGAAGATTATGTCTTCCCCTTTTCAAAGAGCTGAGACAGAAGTACAACGTGCGATCCAT
 GCCCATCCGAAAGGATGATGAAGTTCAGTTGTACGTGGACACTATAAAGGTCAGCAAATTTGGCAAAGTA
 GTCCAGGTTTACAGGAAGAAATATGTTATCTACATTGAACGGGTGCAGCGGAAAAGGCTAATGGCACAA
 CTGTCCACGTAGGCATTCACCCAGCAAGGTGGTTATCACTAGGCTAAAAGTGGACAAAAGACCGCAAAA
 GATCCTCGAACGGAAAAGCCAAATCTCGCCAAGTAGGAAAAGGAAAAGGCAAAATACAAGGAAGAAACCATT
 GAGAAGATGCAGGAA

ACGCGTACGCGGCCGCTCGAGCAGAAACTCATCTCAGAAGAGGATCTGGCAGCAAATGATATCCTGGATT
 ACAAGGATGACGACGATAAGGTTTAA

Protein Sequence: >RC209922 protein sequence
 Red=Cloning site Green=Tags(s)
 MKFNPVTSDRSKNRKRHFNAPSHIRRKIMSSPLSKELRQKYNVRSMPIRKDDEVQVVRGHYKQQIGKV
 VQYRKKYVIYIERVQREKANGTTVHVGIHPSKVITRLKLDKDRKKILERKAKSRQVGKEKGKYKEETI
 EKMQE

TRTRPLEQKLISEEDLAANDILDYKDDDDKV

Chromatograms: https://cdn.origene.com/chromatograms/mk6087_f09.zip

Restriction Sites: SgfI-MluI



[View online »](#)

Reconstitution Method:

1. Centrifuge at 5,000xg for 5min.
2. Carefully open the tube and add 100ul of sterile water to dissolve the DNA.
3. Close the tube and incubate for 10 minutes at room temperature.
4. Briefly vortex the tube and then do a quick spin (less than 5000xg) to concentrate the liquid at the bottom.
5. Store the suspended plasmid at -20°C. The DNA is stable for at least one year from date of shipping when stored at -20°C.

RefSeq: [NM_000987.5](#)

RefSeq Size: 602 bp

RefSeq ORF: 438 bp

Locus ID: 6154

UniProt ID: [P61254](#)

Cytogenetics: 17p13.1

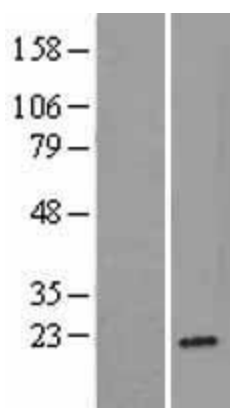
Domains: KOW, KOW

Protein Pathways: Ribosome

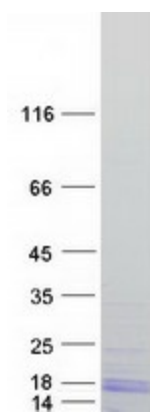
MW: 17.3 kDa

Gene Summary: Ribosomes, the organelles that catalyze protein synthesis, consist of a small 40S subunit and a large 60S subunit. Together these subunits are composed of 4 RNA species and approximately 80 structurally distinct proteins. This gene encodes a ribosomal protein that is a component of the 60S subunit. The protein belongs to the L24P family of ribosomal proteins. It is located in the cytoplasm. As is typical for genes encoding ribosomal proteins, there are multiple processed pseudogenes of this gene dispersed through the genome. Mutations in this gene result in Diamond-Blackfan anemia. Alternative splicing results in multiple transcript variants. [provided by RefSeq, Oct 2015]

Product images:



Western blot validation of overexpression lysate (Cat# [LY400355]) using anti-DDK antibody (Cat# [TA50011-100]). Left: Cell lysates from untransfected HEK293T cells; Right: Cell lysates from HEK293T cells transfected with RC209922 using transfection reagent MegaTran 2.0 (Cat# [TT210002]).



Coomassie blue staining of purified RPL26 protein (Cat# [TP309922]). The protein was produced from HEK293T cells transfected with RPL26 cDNA clone (Cat# RC209922) using MegaTran 2.0 (Cat# [TT210002]).