

Product datasheet for RC209914

C18orf25 (NM_001008239) Human Tagged ORF Clone

Product data:

Product Type:	Expression Plasmids
Product Name:	C18orf25 (NM_001008239) Human Tagged ORF Clone
Tag:	Myc-DDK
Symbol:	C18orf25
Synonyms:	Ark2N; ARKL1; RNF111L1
Mammalian Cell Selection:	Neomycin
Vector:	pCMV6-Entry (PS100001)
E. coli Selection:	Kanamycin (25 ug/mL)
ORF Nucleotide Sequence:	>RC209914 ORF sequence Red=Cloning site Blue=ORF Green=Tags(s)

TTTTGTAATACGACTCACTATAGGGCGGCCGGAATTCGTCGACTGGATCCGGTACCGAGGAGATCTGCC
GCC**CGATCGCC**

ATGAAGATGGAGGAGGCAGTGGGAAAAGTTGAAGAACTCATTGAGTCCGAAGCCCCACAAAAGCATCTG
AACAAAGACAGCCAAGGAGGAAGATGGATCTGTAGAAGTCAAGTTCAGAAAGATGGTGTAGC
GGATTCTACAGTTATTTCTTCAATGCCCTGCTTGTGATGGAAGTGAAGGGACTCTTCTGAGTCTCAG
TTAGCATCCACAGAGAGTGACAAGCCTACAAGTGGCCGAGTTTATGAGAGTGACTCCTAATCACTGCA
TGCTTTCCCTTCTCTAGTGGTCACCTGGCTGATTCAGATACGTTGTCTCCGAGAAGAGAATGAACC
CTCTCAGGCAGAAACGGCGGTAGAAGGAGACCCCTCAGGAGTGTCTGGTCCACAGTTGGGCGCAAGTCT
AGGCGGTCCCAGTCTGAAAGTAAAAGTCCACTATGGCTGCCAAGAAAAACCGGCAATCCAGTGATAAAC
AGAATGGCCGAGTCGCCAAGGTTAAAGGTCATCGGAGCCAAAAGCACAAGGAGAGGATCAGGCTACTGAG
GCAGAAACGGGAGGCTGCTGCAAGGAAGAAATATAACCTGCTGCAGGACAGTAGTACCAGTGATAGTGAC
CTGACTTGTGACTCAAGCACGAGCTCATCAGATGATGATGAAGAGGTTTCAGGGAGCAGCAAGACAATCA
CTGCAGAGATACCAGGTCATTTGGATCCAGGATCCTAGCAAGTGACAAAACATCTGCTGGCAATGCGCC
ACTCAATGAAGAAATTAACATTGCGTCTTCAGATAGTGAAGTGAAGATTGTGGGAGTTCCAGGAACATGCA
AGGTGTGTTTCATCCTCGAGGTGGTGTGATTCAGAGTGTTCCTTTCATGGAAGCATGGCTCGGGCACGCAGT
ATGTTAGCACCAGGCAAACACAGTCATGGACTGCTGTGACTCCCCAGCAGACTTGGGCTTACCAGCAGAG
AGTTGTTGACCTTACCTGGATGAGGATAGCAGGCGTAAATACCTACTG

ACGCGTACGCGGCCGCTCGAGCAGAAACTCATCTCAGAAGAGGATCTGGCAGCAAATGATATCCTGGATT
ACAAGGATGACGACGATAAGGTTTAA



[View online »](#)

Protein Sequence: >RC209914 protein sequence
Red=Cloning site Green=Tags(s)

MKMEEAVGKVEELIESEAPPKASEQETAKEEDGSVELESQVQKDGVADSTVISSMPCLLMELRRDSSESQ
 LASTESDKPTTGRVYVESDSSNHCM LSPSSSGHLADSDTLSSAEENEPSQAETA VEGDPSPGVSGATVGRKS
 RRSRSESETSTMAAKNKRQSSDKQNGRVAKVKGHRSSQKHKERIRLLRQKREAAARKKYNLLQDSSTSDSD
 L TCDSSSTSSDDDEEVSGSSKTI TAEIPGHLDPGFLASDKTSAGNAPLNEEINIASSDSEVEIVGVQEHA
 RCVHPRGGVIQSVSSWKHSGTQYVSTRQTQSWTAVTPQQTWASPAEVDLTLDEDSRRKYLL

TRTRPLEQKLISEEDLAANDILDYKDDDDKV

Chromatograms: https://cdn.origene.com/chromatograms/mk6586_a01.zip

Restriction Sites: SgfI-MluI

Cloning Scheme:



ACCN: NM_001008239

ORF Size: 1029 bp

OTI Disclaimer: The molecular sequence of this clone aligns with the gene accession number as a point of reference only. However, individual transcript sequences of the same gene can differ through naturally occurring variations (e.g. polymorphisms), each with its own valid existence. This clone is substantially in agreement with the reference, but a complete review of all prevailing variants is recommended prior to use. [More info](#)

OTI Annotation: This clone was engineered to express the complete ORF with an expression tag. Expression varies depending on the nature of the gene.

Components: The ORF clone is ion-exchange column purified and shipped in a 2D barcoded Matrix tube containing 10ug of transfection-ready, dried plasmid DNA (reconstitute with 100 ul of water).

Reconstitution Method:

1. Centrifuge at 5,000xg for 5min.
2. Carefully open the tube and add 100ul of sterile water to dissolve the DNA.
3. Close the tube and incubate for 10 minutes at room temperature.
4. Briefly vortex the tube and then do a quick spin (less than 5000xg) to concentrate the liquid at the bottom.
5. Store the suspended plasmid at -20°C. The DNA is stable for at least one year from date of shipping when stored at -20°C.

RefSeq: [NM_001008239.2](#), [NP_001008240.1](#)

RefSeq Size: 5290 bp

RefSeq ORF: 1032 bp

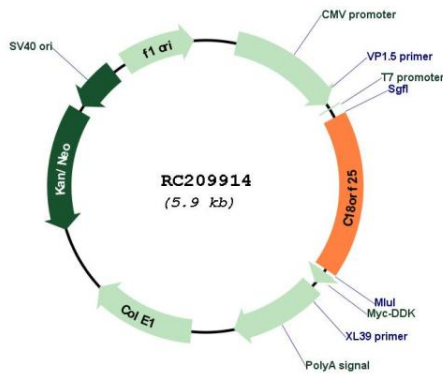
Locus ID: 147339

UniProt ID: [Q96B23](#)

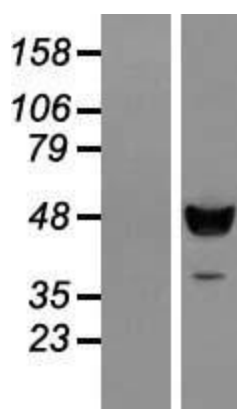
Cytogenetics: 18q21.1

MW: 37 kDa

Product images:



Circular map for RC209914



Western blot validation of overexpression lysate (Cat# [LY423408]) using anti-DDK antibody (Cat# [TA50011-100]). Left: Cell lysates from untransfected HEK293T cells; Right: Cell lysates from HEK293T cells transfected with RC209914 using transfection reagent MegaTran 2.0 (Cat# [TT210002]).