

Product datasheet for RC209911

LRRC25 (NM_145256) Human Tagged ORF Clone

Product data:

Product Type: Expression Plasmids
Product Name: LRRC25 (NM_145256) Human Tagged ORF Clone
Tag: Myc-DDK
Symbol: LRRC25
Synonyms: MAPA
Mammalian Cell Selection: Neomycin
Vector: pCMV6-Entry (PS100001)
E. coli Selection: Kanamycin (25 ug/mL)
ORF Nucleotide Sequence: >RC209911 ORF sequence
 Red=Cloning site Blue=ORF Green=Tags(s)

TTTTGTAATACGACTCACTATAGGGCGCCGGGAATTCGTCGACTGGATCCGGTACCGAGGAGATCTGCC
 GCC**CGATCGCC**

ATGGGGGGCACCCCTGGCATGGACGCTGCTGTTGCCGCTGCTGCTGCGGGAGTCAGACAGCCTAGAACCCT
 CGTGCACCGTGTCTCCGCGGATGTGGACTGGAACCGGGAGTTCAGTGCCACGTGCCTGAATTTTCAGTGG
 CCTCAGCCTGAGCCTGCCTCACAACCAGTCTCTGCGGGCCAGCAACGTGATTCTCCTTGACCTGTCTGGG
 AACGGCCTGCGAGAGCTCCAGTGACCTCTTTGCCACCTGCAGAAGCTTGAGGTCTGAACGTGTCTAC
 GCAACCCCTTGTCTCGTGTGGATGGGGCGCTGGCCGCCGCTGTGACCTTGACCTGCAGGCCGACTGCAA
 CTGTGCCCTGGAGTCTGGCAGCAGATCCGCCGAGACAACTGCTCTGGCCAGAAGCCTCTGCTCTGCTGG
 GACACAACCAGCTCCCAGCACAACCTCTCTGCCTTCTTGAGGTGAGCTGCGCCCTGGCCTGGCCTCTG
 CAACTATCGGGGAGTGGTGGTTCAGCGGGTGCCTGCTTCTTGACTTGCCATCGCTGGCCCTGTGCTGGC
 CTGGAGACTCTGGCGATGCCGAGTGGCCAGAAGCCGGGAGCTGAACAAACCCTGGGCTGCTCAGGATGGG
 CCCAAGCCCGTTTAGGCTTGCAGCCACGGTACGGCAGCCGGAGCGCCCCAAGCCCCAAGTGGCCGTGC
 CATCTGCCCTCCACTCCGACTATGAGAACAATGTTTGTGGCCAGCCAGCAGCCGAGCACCAGTGGGA
 TGAACAAGGGGCTCACCCCTCAGAGGACAATGACTTTTACATCACTACAAGGACATCGACTGGCTTCC
 CAGCCTGTCTACTGTAACCTGCAGTCACTGGGCCAGGCCCAATGGATGAAGAGGAGTACGTGATCCCCG
 GGCAC

ACGCGTACGCGGCCGCTCGAGCAGAAACTCATCTCAGAAGAGGATCTGGCAGCAAATGATATCCTGGATT
 ACAAGGATGACGACGATAAGGTTTAA



[View online »](#)

Protein Sequence: >RC209911 protein sequence
Red=Cloning site Green=Tags(s)

MGGTLAWTLLLPLLLRESDSLPSCTVSSADVDWNAEFSATCLNFSGLSLSLPHNQSLRASNVILLDL SG
 NGLREL PVTFFAHLQKLEVLNVLNRNPLSRVDGALAARCDLQADCNCALESWHDIRRDNC SGQKPLL CW
 DTTSSQHNL SAFLEVSCAPGLASATIGAVVVS GCLLLGLAIAGPVLAWRLWRCRVAR SRELNKPWAAQDG
 PKPGLGLQPRYGSRSAPKQVAVPSCPSTPDYENMFV GQPAAEHQWDEQGAHP SEDNDFYIN YKDIDLAS
 QPVYCNLQSLGQASMDEEEYVIPGH

TRTRPLEQKLISEEDLAANDILDYKDDDDKV

Chromatograms: https://cdn.origene.com/chromatograms/mk6363_c06.zip

Restriction Sites: SgfI-MluI

Cloning Scheme:



ACCN: NM_145256

ORF Size: 915 bp

OTI Disclaimer: The molecular sequence of this clone aligns with the gene accession number as a point of reference only. However, individual transcript sequences of the same gene can differ through naturally occurring variations (e.g. polymorphisms), each with its own valid existence. This clone is substantially in agreement with the reference, but a complete review of all prevailing variants is recommended prior to use. [More info](#)

OTI Annotation: This clone was engineered to express the complete ORF with an expression tag. Expression varies depending on the nature of the gene.

Components: The ORF clone is ion-exchange column purified and shipped in a 2D barcoded Matrix tube containing 10ug of transfection-ready, dried plasmid DNA (reconstitute with 100 ul of water).

Reconstitution Method:

1. Centrifuge at 5,000xg for 5min.
2. Carefully open the tube and add 100ul of sterile water to dissolve the DNA.
3. Close the tube and incubate for 10 minutes at room temperature.
4. Briefly vortex the tube and then do a quick spin (less than 5000xg) to concentrate the liquid at the bottom.
5. Store the suspended plasmid at -20°C. The DNA is stable for at least one year from date of shipping when stored at -20°C.

RefSeq: [NM_145256.2](#), [NP_660299.2](#)

RefSeq Size: 2430 bp

RefSeq ORF: 918 bp

Locus ID: 126364

UniProt ID: [Q8N386](#)

Cytogenetics: 19p13.11

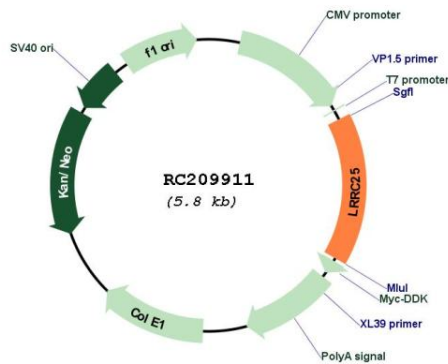
Domains: LRR

Protein Families: Transmembrane

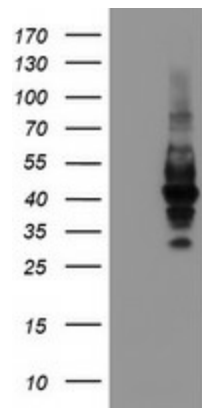
MW: 33.2 kDa

Gene Summary: Plays a role in the inhibition of RLR-mediated type I interferon signaling pathway by targeting DDX58/RIG-I for autophagic degradation. Interacts specifically with ISG15-associated DDX58 to promote interaction between DDX58 and the autophagic cargo receptor p62/SQSTM1 to mediate DDX58 degradation via selective autophagy (PubMed:29288164). Plays also a role in the inhibition of NF-kappa-B signaling pathway and inflammatory response by promoting the degradation of p65/RELA.[UniProtKB/Swiss-Prot Function]

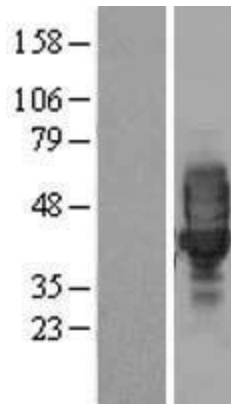
Product images:



Circular map for RC209911



HEK293T cells were transfected with the pCMV6-ENTRY control (Cat# [PS100001], Left lane) or pCMV6-ENTRY LRRC25 (Cat# RC209911, Right lane) cDNA for 48 hrs and lysed. Equivalent amounts of cell lysates (5 ug per lane) were separated by SDS-PAGE and immunoblotted with anti-LRRC25(Cat# [TA504883]). Positive lysates [LY407925] (100ug) and [LC407925] (20ug) can be purchased separately from OriGene.



Western blot validation of overexpression lysate (Cat# [LY407925]) using anti-DDK antibody (Cat# [TA50011-100]). Left: Cell lysates from untransfected HEK293T cells; Right: Cell lysates from HEK293T cells transfected with RC209911 using transfection reagent MegaTran 2.0 (Cat# [TT210002]).