

Product datasheet for RC209902

SNRPD1 (NM_006938) Human Tagged ORF Clone

Product data:

Product Type: Expression Plasmids
Product Name: SNRPD1 (NM_006938) Human Tagged ORF Clone
Tag: Myc-DDK
Symbol: SNRPD1
Synonyms: HsT2456; Sm-D1; SMD1; SNRPD
Mammalian Cell Selection: Neomycin
Vector: pCMV6-Entry (PS100001)
E. coli Selection: Kanamycin (25 ug/mL)
ORF Nucleotide Sequence: >RC209902 representing NM_006938
 Red=Cloning site Blue=ORF Green=Tags(s)

TTTTGTAATACGACTCACTATAGGGCGCCGGGAATTCGTCGACTGGATCCGGTACCGAGGAGATCTGCC
 GCC**CGGATCGCC**

ATGAAGCTCGTGAGATTTTTGATGAAATTGAGTCATGAACTGTAACCATTGAATTGAAGAACGGAACAC
 AGGTCCATGGAACAATCACAGGTGTGGATGTCAGCATGAATACACATCTAAAGCTGTGAAAATGACCC
 GAAGAACAGAGAACCCTGTACAGCTGGAACGCTGAGTATTCGAGGAAATAACATTCGGTATTTTATTCTA
 CCAGACAGTTTACCTCTGGATACACTACTTGTGGATGTTGAACCTAAGGTGAAATCTAAGAAAAGGGAAG
 CTGTTGCAGGAAGAGGCAGAGGAAGAGGAAGAGGACGTGGCCGTGGCAGAGGAAGAGGGGTCC
 TAGGCGA

ACGCGTACGCGGCCGCTCGAGCAGAAACTCATCTCAGAAGAGGATCTGGCAGCAAATGATATCCTGGATT
 ACAAGGATGACGACGATAAGGTTTAA

Protein Sequence: >RC209902 representing NM_006938
 Red=Cloning site Green=Tags(s)
 MKLVRFMKLSHETVTIELKNGTQVHGTTITGVDVSMNTHLKAVKMTLKNREPVLQLETLSIRGNIRYFIL
 PDSLPLDILLVDVEPKVSKKREAVAGRGRGRGRGRGRGRGRGRGRGPPRR

TRTRPLEQKLISEEDLAANDILDYKDDDDKV

Chromatograms: https://cdn.origene.com/chromatograms/mk8114_c01.zip

Restriction Sites: SgfI-MluI



[View online »](#)

Cloning Scheme:


ACCN: NM_006938

ORF Size: 357 bp

OTI Disclaimer: Due to the inherent nature of this plasmid, standard methods to replicate additional amounts of DNA in E. coli are highly likely to result in mutations and/or rearrangements. Therefore, OriGene does not guarantee the capability to replicate this plasmid DNA. Additional amounts of DNA can be purchased from OriGene with batch-specific, full-sequence verification at a reduced cost. Please contact our customer care team at custsupport@origene.com or by calling 301.340.3188 option 3 for pricing and delivery.

The molecular sequence of this clone aligns with the gene accession number as a point of reference only. However, individual transcript sequences of the same gene can differ through naturally occurring variations (e.g. polymorphisms), each with its own valid existence. This clone is substantially in agreement with the reference, but a complete review of all prevailing variants is recommended prior to use. [More info](#)

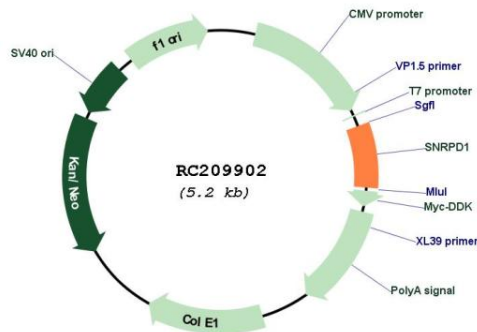
OTI Annotation: This clone was engineered to express the complete ORF with an expression tag. Expression varies depending on the nature of the gene.

Components: The ORF clone is ion-exchange column purified and shipped in a 2D barcoded Matrix tube containing 10ug of transfection-ready, dried plasmid DNA (reconstitute with 100 ul of water).

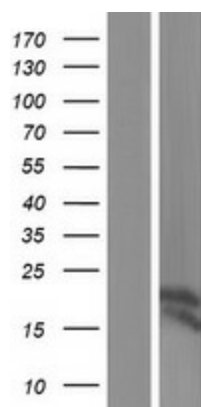
- Reconstitution Method:**
1. Centrifuge at 5,000xg for 5min.
 2. Carefully open the tube and add 100ul of sterile water to dissolve the DNA.
 3. Close the tube and incubate for 10 minutes at room temperature.
 4. Briefly vortex the tube and then do a quick spin (less than 5000xg) to concentrate the liquid at the bottom.
 5. Store the suspended plasmid at -20°C. The DNA is stable for at least one year from date of shipping when stored at -20°C.

Note:	Plasmids are not sterile. For experiments where strict sterility is required, filtration with 0.22um filter is required.
RefSeq:	NM_006938.4
RefSeq Size:	1614 bp
RefSeq ORF:	360 bp
Locus ID:	6632
UniProt ID:	P62314
Cytogenetics:	18q11.2
Domains:	Sm
Protein Families:	Druggable Genome, Stem cell - Pluripotency
Protein Pathways:	Spliceosome, Systemic lupus erythematosus
MW:	13.1 kDa
Gene Summary:	This gene encodes a small nuclear ribonucleoprotein that belongs to the SNRNP core protein family. The protein may act as a charged protein scaffold to promote SNRNP assembly or strengthen SNRNP-SNRNP interactions through nonspecific electrostatic contacts with RNA. Two transcript variants encoding different isoforms have been found for this gene. [provided by RefSeq, May 2014]

Product images:



Circular map for RC209902



Western blot validation of overexpression lysate (Cat# [LY416284]) using anti-DDK antibody (Cat# [TA50011-100]). Left: Cell lysates from untransfected HEK293T cells; Right: Cell lysates from HEK293T cells transfected with RC209902 using transfection reagent MegaTran 2.0 (Cat# [TT210002]).