

Product datasheet for RC209899

AMN1 (NM_207337) Human Tagged ORF Clone

Product data:

Product Type:	Expression Plasmids
Product Name:	AMN1 (NM_207337) Human Tagged ORF Clone
Tag:	Myc-DDK
Symbol:	AMN1
Synonyms:	antagonist of mitotic exit network 1 homolog; antagonist of mitotic exit network 1 homolog (S. cerevisiae)
Mammalian Cell Selection:	Neomycin
Vector:	pCMV6-Entry (PS100001)
E. coli Selection:	Kanamycin (25 ug/mL)
ORF Nucleotide Sequence:	>RC209899 ORF sequence Red=Cloning site Blue=ORF Green=Tags(s)

TTTTGTAATACGACTCACTATAGGGCGGCCGGAATTCGTCGACTGGATCCGGTACCGAGGAGATCTGCC
GCCGCGATCGCC

ATGCAGGGACAGATAACAGATTCAAATATAAGTGAGATTTTACATCCTGAAGTCCAAACTCTAGATCTAC
GGAGCTGCGATATATCAGATGCTGCTCTCCTGCACCTGTCTAACTGTAGAAAAGTGAAGAAATTAATTT
AAATGCTTCAAAGGGAACCGAGTTTCTGTAACCTCAGAAGGAATAAAGCTGTGGCTTCATCTTGTTC
TACCTACACGAAGCTTCTTTGAAAAGATGCTGCAATCTCACTGACGAAGGAGTCGTTGCTTGCCTCA
ATTGCCAGCTGCTAAAGATCATCGATTTAGGTGGCTGCTTAAGTATTACTGATGTGCTTACATGCATT
AGGAAAAAAGTGCCTTTTTGCAGTGTGTCGACTTTTCAGCTACTCAGGTATCTGACAGTGGTGTGATT
GCACTTGTAGTGGACCTTGTGCGAAGAAATTAGAGGAGATTCATATGGGACATTGTGTAATCTGACTG
ATGGGGCTGTGCGAAGCTGCTTACTTACTGTCCTCAAATACGTATATTACTCTTCCATGGATGCCCTT
GATAACAGATCATTCCCAGAAAGTGTGGAGCAATTAGTAGGCCAAACAACTAAAGCAAGTGACATGG
ACTGTTTAT

ACGCGTACGCGGCCGCTCGAGCAGAACTCATCTCAGAAGAGGATCTGGCAGCAAATGATATCCTGGATT
ACAAGGATGACGACGATAAGGTTTAA



[View online »](#)

Protein Sequence: >RC209899 protein sequence
Red=Cloning site Green=Tags(s)

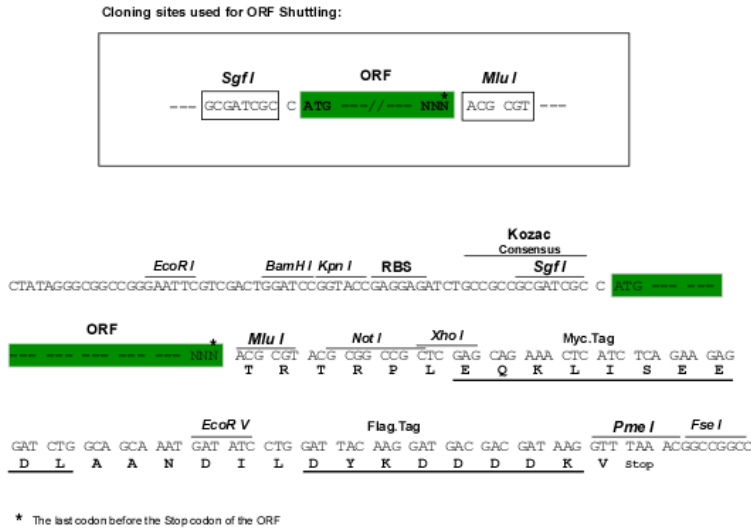
MQGQITDSNISEILHPEVQTLDLRSCDISDAALLHLSNCRKLLKLNLNASKGNRVSVTSEGIKAVASSCS
 YLHEASLKRCNLTDEGVVALALNCQLLKIIDLGGCLSIDVSLHALGKNCPFLQCVDFSATQVSDSGVI
 ALVSGPCAkkLEEIHMGHCYNLTDGAVEAVLTYCPQIRILLFHGCPLITDHSREVLQVLGPNKLKQVTW
 TVY

TRTRPLEQKLISEEDLAANDILDYKDDDDKV

Chromatograms: https://cdn.origene.com/chromatograms/mk6359_b07.zip

Restriction Sites: SgfI-MluI

Cloning Scheme:



ACCN: NM_207337

ORF Size: 639 bp

OTI Disclaimer: The molecular sequence of this clone aligns with the gene accession number as a point of reference only. However, individual transcript sequences of the same gene can differ through naturally occurring variations (e.g. polymorphisms), each with its own valid existence. This clone is substantially in agreement with the reference, but a complete review of all prevailing variants is recommended prior to use. [More info](#)

OTI Annotation: This clone was engineered to express the complete ORF with an expression tag. Expression varies depending on the nature of the gene.

Components: The ORF clone is ion-exchange column purified and shipped in a 2D barcoded Matrix tube containing 10ug of transfection-ready, dried plasmid DNA (reconstitute with 100 ul of water).

Reconstitution Method:

1. Centrifuge at 5,000xg for 5min.
2. Carefully open the tube and add 100ul of sterile water to dissolve the DNA.
3. Close the tube and incubate for 10 minutes at room temperature.
4. Briefly vortex the tube and then do a quick spin (less than 5000xg) to concentrate the liquid at the bottom.
5. Store the suspended plasmid at -20°C. The DNA is stable for at least one year from date of shipping when stored at -20°C.

Note: Plasmids are not sterile. For experiments where strict sterility is required, filtration with 0.22um filter is required.

RefSeq: [NM_207337.1](#), [NP_997220.1](#)

RefSeq Size: 1979 bp

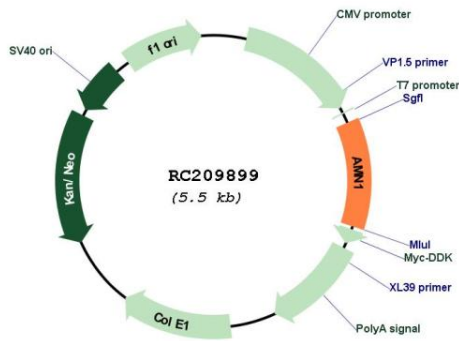
RefSeq ORF: 641 bp

Locus ID: 196394

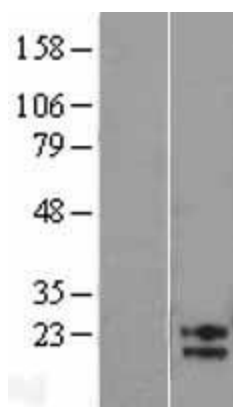
Cytogenetics: 12p11.21

MW: 23 kDa

Product images:



Circular map for RC209899



Western blot validation of overexpression lysate (Cat# [LY403964]) using anti-DDK antibody (Cat# [TA50011-100]). Left: Cell lysates from untransfected HEK293T cells; Right: Cell lysates from HEK293T cells transfected with RC209899 using transfection reagent MegaTran 2.0 (Cat# [TT210002]).