

Product datasheet for RC209894L1

SPOPL (NM_001001664) Human Tagged Lenti ORF Clone

Product data:

Product Type:	Expression Plasmids
Product Name:	SPOPL (NM_001001664) Human Tagged Lenti ORF Clone
Tag:	Myc-DDK
Symbol:	SPOPL
Synonyms:	BTBD33
Mammalian Cell Selection:	None
Vector:	pLenti-C-Myc-DDK (PS100064)
E. coli Selection:	Chloramphenicol (34 ug/mL)
ORF Nucleotide Sequence:	The ORF insert of this clone is exactly the same as(RC209894).
Restriction Sites:	SgfI-MluI
Cloning Scheme:	

Cloning sites used for ORF Shuttling:



* The last codon before the Stop codon of the ORF.

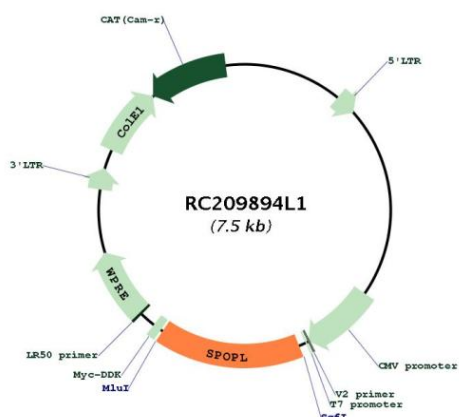
ACCN:	NM_001001664
ORF Size:	1176 bp



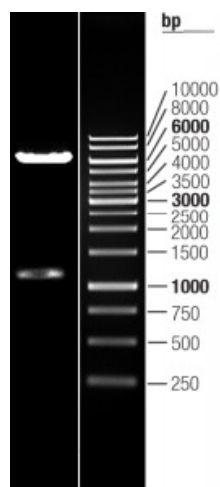
[View online »](#)

OTI Disclaimer:	The molecular sequence of this clone aligns with the gene accession number as a point of reference only. However, individual transcript sequences of the same gene can differ through naturally occurring variations (e.g. polymorphisms), each with its own valid existence. This clone is substantially in agreement with the reference, but a complete review of all prevailing variants is recommended prior to use. More info
OTI Annotation:	This clone was engineered to express the complete ORF with an expression tag. Expression varies depending on the nature of the gene.
Components:	The ORF clone is ion-exchange column purified and shipped in a 2D barcoded Matrix tube containing 10ug of transfection-ready, dried plasmid DNA (reconstitute with 100 ul of water).
Reconstitution Method:	<ol style="list-style-type: none"> 1. Centrifuge at 5,000xg for 5min. 2. Carefully open the tube and add 100ul of sterile water to dissolve the DNA. 3. Close the tube and incubate for 10 minutes at room temperature. 4. Briefly vortex the tube and then do a quick spin (less than 5000xg) to concentrate the liquid at the bottom. 5. Store the suspended plasmid at -20°C. The DNA is stable for at least one year from date of shipping when stored at -20°C.
RefSeq:	NM_001001664.1
RefSeq Size:	5741 bp
RefSeq ORF:	1179 bp
Locus ID:	339745
UniProt ID:	Q6IQ16
Cytogenetics:	2q22.1
MW:	44.6 kDa
Gene Summary:	Component of a cullin-RING-based BCR (BTB-CUL3-RBX1) E3 ubiquitin-protein ligase complex that mediates the ubiquitination and subsequent proteasomal degradation of target proteins, but with relatively low efficiency. Cullin-RING-based BCR (BTB-CUL3-RBX1) E3 ubiquitin-protein ligase complexes containing homodimeric SPOPL or the heterodimer formed by SPOP and SPOPL are less efficient than ubiquitin ligase complexes containing only SPOP. May function to down-regulate the activity of cullin-RING-based BCR (BTB-CUL3-RBX1) E3 ubiquitin-protein ligase complexes that contain SPOP.[UniProtKB/Swiss-Prot Function]

Product images:



Circular map for RC209894L1



Double digestion of RC209894L1 using SgfI and MluI