

Product datasheet for RC209891L2

MARCH8 (MARCHF8) (NM_145021) Human Tagged Lenti ORF Clone

Product data:

Product Type:	Expression Plasmids
Product Name:	MARCH8 (MARCHF8) (NM_145021) Human Tagged Lenti ORF Clone
Tag:	mGFP
Symbol:	MARCHF8
Synonyms:	c-MIR; CMIR; MARCH-VIII; MARCH8; MIR; RNF178
Mammalian Cell Selection:	None
Vector:	pLenti-C-mGFP (PS100071)
E. coli Selection:	Chloramphenicol (34 ug/mL)
ORF Nucleotide Sequence:	The ORF insert of this clone is exactly the same as(RC209891).
Restriction Sites:	SgfI-MluI
Cloning Scheme:	

Cloning sites used for ORF Shuttling:



* The last codon before the Stop codon of the ORF.

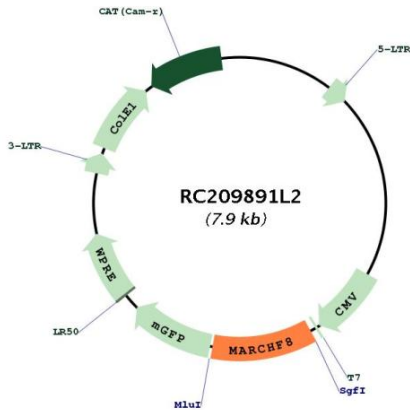
ACCN:	NM_145021
ORF Size:	873 bp



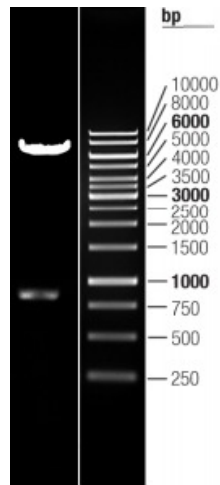
[View online »](#)

OTI Disclaimer:	The molecular sequence of this clone aligns with the gene accession number as a point of reference only. However, individual transcript sequences of the same gene can differ through naturally occurring variations (e.g. polymorphisms), each with its own valid existence. This clone is substantially in agreement with the reference, but a complete review of all prevailing variants is recommended prior to use. More info
OTI Annotation:	This clone was engineered to express the complete ORF with an expression tag. Expression varies depending on the nature of the gene.
Components:	The ORF clone is ion-exchange column purified and shipped in a 2D barcoded Matrix tube containing 10ug of transfection-ready, dried plasmid DNA (reconstitute with 100 ul of water).
Reconstitution Method:	<ol style="list-style-type: none"> 1. Centrifuge at 5,000xg for 5min. 2. Carefully open the tube and add 100ul of sterile water to dissolve the DNA. 3. Close the tube and incubate for 10 minutes at room temperature. 4. Briefly vortex the tube and then do a quick spin (less than 5000xg) to concentrate the liquid at the bottom. 5. Store the suspended plasmid at -20°C. The DNA is stable for at least one year from date of shipping when stored at -20°C.
RefSeq:	NM_145021.4
RefSeq Size:	5300 bp
RefSeq ORF:	876 bp
Locus ID:	220972
UniProt ID:	Q5T0T0
Cytogenetics:	10q11.21-q11.22
Domains:	RING
Protein Families:	Druggable Genome, Transmembrane
MW:	32.9 kDa
Gene Summary:	MARCH8 is a member of the MARCH family of membrane-bound E3 ubiquitin ligases (EC 6.3.2.19). MARCH enzymes add ubiquitin (see MIM 191339) to target lysines in substrate proteins, thereby signaling their vesicular transport between membrane compartments. MARCH8 induces the internalization of several membrane glycoproteins (Goto et al., 2003 [PubMed 12582153]; Bartee et al., 2004 [PubMed 14722266]).[supplied by OMIM, Apr 2010]

Product images:



Circular map for RC209891L2



Double digestion of RC209891L2 using SgfI and MluI