

Product datasheet for **RC209891**

MARCHF8 (NM_145021) Human Tagged ORF Clone

Product data:

Product Type:	Expression Plasmids
Product Name:	MARCHF8 (NM_145021) Human Tagged ORF Clone
Tag:	Myc-DDK
Symbol:	MARCHF8
Synonyms:	c-MIR; CMIR; MARCH-VIII; MARCH8; MIR; RNF178
Mammalian Cell Selection:	Neomycin
Vector:	pCMV6-Entry (PS100001)
E. coli Selection:	Kanamycin (25 ug/mL)
ORF Nucleotide Sequence:	>RC209891 ORF sequence Red=Cloning site Blue=ORF Green=Tags(s)

TTTTGTAATACGACTCACTATAGGGCGCCGGGAATTCGTCGACTGGATCCGGTACCGAGGAGATCTGCC
GCC**CGGATCGCC**

ATGAGCATGCCACTGCATCAGATCTCTGCCATTCCATCCCAGGATGCCATCTCTGCTAGAGTCTACAGAA
GTAAGACCAAAGAAAAGGAGAGGGAAGAACAAGAGAGTTCGGGACATTCATGAGTCATTCAAG
CAACATTTCTAAGGCTGGGAGTCTCCGTCAGCATCAGCTCCGGCTCCGGTGTCTCTCTCGCACT
TCTATCACGCCATCCAGCCAGGACATCTGCAGGATCTGCCACTGTGAAGGAGATGATGAGAGCCCCCTGA
TCACCCCTGCCACTGCACAGGAAGCCTCCACTTCGTGCACCAGGCTGCCTGCAGCAGTGGATCAAGAG
CTCCGACACGCGCTGCTGCGAGCTCTGCAAGTATGAGTTCATCATGGAGACCAAGCTGAAGCCACTGAGA
AAATGGGAGAAGTTGCAGATGACGTCCAGCGAGCGCAGGAAGATCATGTGCTCAGTGACATTCCACGTCA
TTGCCATCACATGTGTGGTCTGGTCTTGTATGTGCTCATTGACCGTACTGCTGAGGAGATCAAGCAGGG
GCAGGCAACAGGAATCTAGAATGGCCCTTTGGACTAAATTGGTGGTTGTGGCCATCGGCTTACCAGGA
GGACTTCTTTTATGTATGTTTCAGTGTAAAGTGTATGTGCAATTGTGGAAGAGACTCAAGGCCTATAATA
GAGTGATCTATGTTCAAACACTGTCCAGAAACAAGCAAAAAGAATATTTTTGAAAAATCTCCACTAACAGA
GCCCAACTTTGAAAATAAACATGGACATGGAATCTGTCTATTCCGACACAAACTCTTCTTGTGCACAGAG
CCTGAAGACACTGGAGCGAAAATCATTACGTC

ACGCGTACGCGGCCGCTCGAGCAGAAACTCATCTCAGAAGAGGATCTGGCAGCAAATGATATCCTGGATT
ACAAGGATGACGACGATAAGGTTTAA



[View online »](#)

Protein Sequence: >RC209891 protein sequence
Red=Cloning site Green=Tags(s)

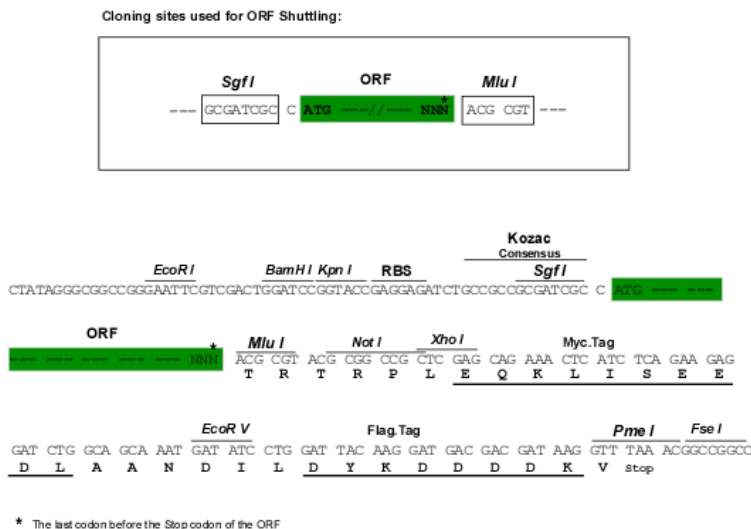
```
MSMPLHQISAIPSQDAISARVYRSKTKEKEREEQNEKTLGHFMSHSSNISKAGSPPSASAPVSSFSRT
SITPSSQDICRICHCEGDDESP LITPCHCTGSLHFVHQACLQQWIKSSDTRCCELCKYEFIMETK LKPLR
KWEKLQMTSSERRKIMCSVTFHVIAITCVVWSLYVLIDRTAEEIKQGQATGILEWPFWTKLVVVAIGFTG
GLLFMYVQCKVYVQLWKRLKAYNRVIYVQNCPE TSKKNIFEKSPLTEPNFENKHGHGICHSDTNSSCCTE
PEDTGAEIIHV
```

TRTRPLEQKLISEEDLAANDILDYKDDDDKV

Chromatograms: https://cdn.origene.com/chromatograms/mk6529_c12.zip

Restriction Sites: SgfI-MluI

Cloning Scheme:



ACCN: NM_145021

ORF Size: 873 bp

OTI Disclaimer: The molecular sequence of this clone aligns with the gene accession number as a point of reference only. However, individual transcript sequences of the same gene can differ through naturally occurring variations (e.g. polymorphisms), each with its own valid existence. This clone is substantially in agreement with the reference, but a complete review of all prevailing variants is recommended prior to use. [More info](#)

OTI Annotation: This clone was engineered to express the complete ORF with an expression tag. Expression varies depending on the nature of the gene.

Components: The ORF clone is ion-exchange column purified and shipped in a 2D barcoded Matrix tube containing 10ug of transfection-ready, dried plasmid DNA (reconstitute with 100 ul of water).

Reconstitution Method:

1. Centrifuge at 5,000xg for 5min.
2. Carefully open the tube and add 100ul of sterile water to dissolve the DNA.
3. Close the tube and incubate for 10 minutes at room temperature.
4. Briefly vortex the tube and then do a quick spin (less than 5000xg) to concentrate the liquid at the bottom.
5. Store the suspended plasmid at -20°C. The DNA is stable for at least one year from date of shipping when stored at -20°C.

RefSeq: [NM_145021.3](#)

RefSeq Size: 5300 bp

RefSeq ORF: 876 bp

Locus ID: 220972

UniProt ID: [Q5T0T0](#)

Cytogenetics: 10q11.21-q11.22

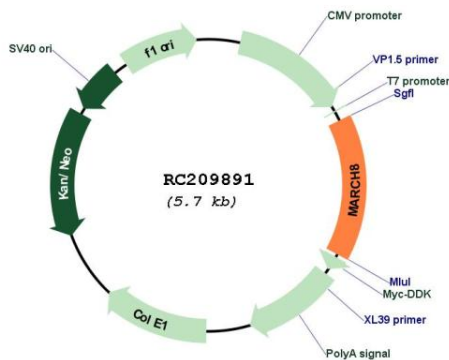
Domains: RING

Protein Families: Druggable Genome, Transmembrane

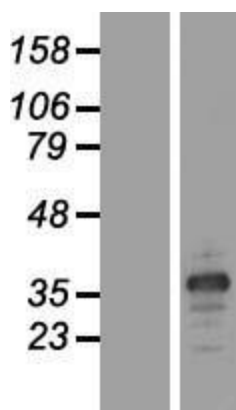
MW: 32.9 kDa

Gene Summary: MARCH8 is a member of the MARCH family of membrane-bound E3 ubiquitin ligases (EC 6.3.2.19). MARCH enzymes add ubiquitin (see MIM 191339) to target lysines in substrate proteins, thereby signaling their vesicular transport between membrane compartments. MARCH8 induces the internalization of several membrane glycoproteins (Goto et al., 2003 [PubMed 12582153]; Bartee et al., 2004 [PubMed 14722266]).[supplied by OMIM, Apr 2010]

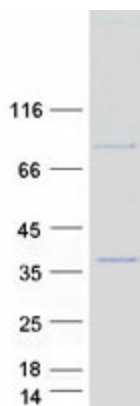
Product images:



Circular map for RC209891



Western blot validation of overexpression lysate (Cat# [LY408083]) using anti-DDK antibody (Cat# [TA50011-100]). Left: Cell lysates from untransfected HEK293T cells; Right: Cell lysates from HEK293T cells transfected with RC209891 using transfection reagent MegaTran 2.0 (Cat# [TT210002]).



Coomassie blue staining of purified MARCH8 protein (Cat# [TP309891]). The protein was produced from HEK293T cells transfected with MARCH8 cDNA clone (Cat# RC209891) using MegaTran 2.0 (Cat# [TT210002]).