

## Product datasheet for **RC209889**

### C1orf96 (CCSAP) (NM\_145257) Human Tagged ORF Clone

#### Product data:

Product Type:	Expression Plasmids
Product Name:	C1orf96 (CCSAP) (NM_145257) Human Tagged ORF Clone
Tag:	Myc-DDK
Symbol:	C1orf96
Synonyms:	C1orf96; CSAP
Mammalian Cell Selection:	Neomycin
Vector:	pCMV6-Entry (PS100001)
E. coli Selection:	Kanamycin (25 ug/mL)
ORF Nucleotide Sequence:	>RC209889 ORF sequence Red=Cloning site Blue=ORF Green=Tags(s)

TTTTGTAATACGACTCACTATAGGGCGGCCGGAATTCGTCGACTGGATCCGGTACCGAGGAGATCTGCC  
GCC**CGATCGCC**

ATGTCCCCGGGAGCGGGTGAAGAGCGAGTACATGAAGCGCTACCAGGAGCCGCGCTGGGAGGAGTACG  
GGCCGTGCTACGGCGAGCTGCTGCACTACCGCCTAGGCCGCCGGCTGCTGGAGCAGGCGCACGCCCTG  
GCTCTGGGACGACTGGGGCCGGCCGCTCCTCGGAGGACTCGGCGTCGTAGAGTCGTGGGCGCCGGG  
GGCCCCGACCCCGGTGCGCCCCGCCCTCGCCCCCGCCCGTAGAGCCGGCGACCCAGGAGGAGCGG  
AACGGCGGGCGCGGGGCCCGGAGGAGCAGGACGCGGAGGCCGGGACGCGGAGGCCGAGGACGCGGA  
GGACGCGGCTCTGCCAGCACTGCCAGTAAAGATGTAGAAGATAAACCTGAACAACAACCAAGAACA  
GAGACTGACAAATCACCCACCACTACTGAGCCTCGACAGCAACCAAGTGCCTATTTGCTAGAGGAAACA  
GGAAAGCGGTCAAAGTCCCAAGATCATCGAGTAAATAAAAGAAAACAAGCATCCATTTGCTCTTTA  
TGGCTGGGAGAAAAACAGACCGATACAGGAAGCCAGAAGACTCACAACGTCTGTGCGTCCGCTCCTGTG  
CATGAGATTCATGAATCAGCATTACGAGCCAAGAACAGAACAGAGTGGAAAAAGGAACTGGTTGCTC  
AAAGGCAGCGAGCTCACTCTGTGGATGTGGAGAAGAACAAGATGAAGGCTTCTCTCAGAGAACCC  
GTGGATGACAGAATACATGAGGTGCTATTCGGCAAGAGCT

**ACGCGT**ACGCGGCCGCTCGAGCAGAAACTCATCTCAGAAGAGGATCTGGCAGCAAATGATATCCTGGATT  
ACAAGGATGACGACGATAAGGTTTAA



**Protein Sequence:** >RC209889 protein sequence  
 Red=Cloning site Green=Tags(s)

MSPGSGVKSEYMKRYQEPRWEEYGPCYGELLHYRLGRRLLEQAHA PWLWDDWGPAGSSSEDSASSESSGAG  
 GPAPRCAPPSPPPPVEPATQEEAERRARGAPEEQDAEAGDAEAEADAALPALPVKDVEDKPEQQTRTR  
 ETDKSPSTSTEPRQQPSALFARGNRKAVKSPQRSSSKIKENKHPFALYGWGEKQTDGTSQKTHNVCASAPV  
 HEIHESALRAKNRRQVEKRKLVAQRQRAHSVDVEKNRKMKASSSENPMWTEYMRCYSARA

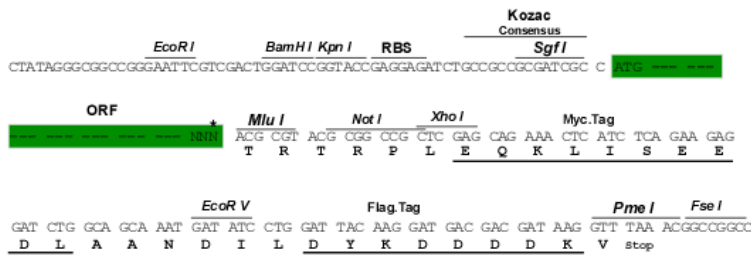
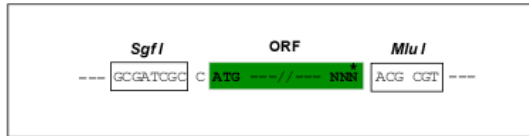
TRTRPLEQKLISEEDLAANDILDYKDDDDKV

**Restriction Sites:**

Sgfl-MluI

**Cloning Scheme:**

Cloning sites used for ORF Shuttling:



\* The last codon before the Stop codon of the ORF

**ACCN:** NM\_145257

**ORF Size:** 810 bp

**OTI Disclaimer:** The molecular sequence of this clone aligns with the gene accession number as a point of reference only. However, individual transcript sequences of the same gene can differ through naturally occurring variations (e.g. polymorphisms), each with its own valid existence. This clone is substantially in agreement with the reference, but a complete review of all prevailing variants is recommended prior to use. [More info](#)

**OTI Annotation:** This clone was engineered to express the complete ORF with an expression tag. Expression varies depending on the nature of the gene.

**Components:** The ORF clone is ion-exchange column purified and shipped in a 2D barcoded Matrix tube containing 10ug of transfection-ready, dried plasmid DNA (reconstitute with 100 ul of water).

**Reconstitution Method:**

1. Centrifuge at 5,000xg for 5min.
2. Carefully open the tube and add 100ul of sterile water to dissolve the DNA.
3. Close the tube and incubate for 10 minutes at room temperature.
4. Briefly vortex the tube and then do a quick spin (less than 5000xg) to concentrate the liquid at the bottom.
5. Store the suspended plasmid at -20°C. The DNA is stable for at least one year from date of shipping when stored at -20°C.

**RefSeq:** [NM\\_145257.2](#), [NP\\_660300.2](#)

**RefSeq Size:** 5121 bp

**RefSeq ORF:** 813 bp

**Locus ID:** 126731

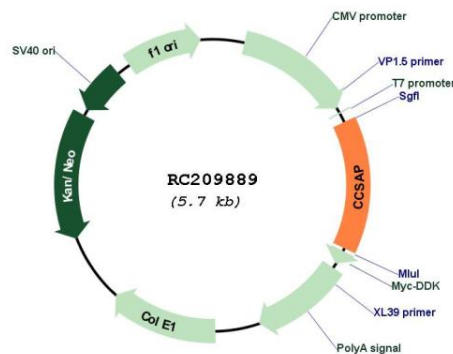
**UniProt ID:** [Q6IQ19](#)

**Cytogenetics:** 1q42.13

**MW:** 30.1 kDa

**Gene Summary:** Plays a role in microtubule (MT) stabilization and this stabilization involves the maintenance of NUMA1 at the spindle poles. Colocalizes with polyglutamylated MTs to promote MT stabilization and regulate bipolar spindle formation in mitosis. Binding of CCSAP to centrosomes and the spindle around centrosomes during mitosis inhibits MT depolymerization, thereby stabilizing the mitotic spindle (PubMed:26562023). May play a role in embryonic development. May be required for proper cilia beating (By similarity). [UniProtKB/Swiss-Prot Function]

### Product images:



Circular map for RC209889