

Product datasheet for **RC209887**

C22orf13 (GUCD1) (NM_031444) Human Tagged ORF Clone

Product data:

Product Type:	Expression Plasmids
Product Name:	C22orf13 (GUCD1) (NM_031444) Human Tagged ORF Clone
Tag:	Myc-DDK
Symbol:	C22orf13
Synonyms:	C22orf13; LLN4
Mammalian Cell Selection:	Neomycin
Vector:	pCMV6-Entry (PS100001)
E. coli Selection:	Kanamycin (25 ug/mL)
ORF Nucleotide Sequence:	>RC209887 ORF sequence Red=Cloning site Blue=ORF Green=Tags(s)

TTTTGTAATACGACTCACTATAGGGCGGCCGGAATTCGTCGACTGGATCCGGTACCGAGGAGATCTGCC
GCC**CGATCGCC**

ATGAGGACGGAGGCGGAGGCAGCGGGCCGCCGCTCGAGCCGGGGACTTTGTGCAACTGCCTGTGCCCG
TCATCCAGCAGCTCTACCACTGGGACTGTGGCCTGGCCTGCTCCAGGATGGTGTGCGGTACCTGGGCCA
GCTGGACGACAGTGAGTTTGAGAGAGCCCTGCAGAAGCTGCAGCTGACCAGGAGCATCTGGACCATCGAC
CTGGCCTACCTGATGCACCACTTTGGCGTGAGGCACCGCTTCTGTACCCAGACCCGGGTGTCGACAAGG
GCTACAAGAACCAGTCCCTTCTACAGGAAGCACTTTGACACAGAAGAGACCCGGGTGAATCAGCTGTTTGC
ACAAGCAAAGGCCTGCAAGGTGCTGGTGGAGAAATGCACAGTGAGTGTGAAGGACATCCAGGCGCACCTG
GCTCAGGGCCATGTGGCCATCGTCTGGTGAACCTCGGGGGTGTGCACTGTGACCTGTGCTCCAGCCCTG
TCAAGTACTGCTGCTTACCCCCAGTGGCCACCACTGCTTCTGCCGCACTCCTGACTACCAGGGCCACTT
CATCGTGTGCGTGGCTACAACCGGGCCACTGGCTGCATCTTCTACAACAACCCAGCCTATGCCGACCGA
ATGTGCAGCACCAGCATCAGTAACCTTTGAGGAGGCCAGAACCAGCTATGGCACAGATGAGGACATCCTCT
TTGTCTACTTGGACAGC

ACGCGTACGCGGCCGCTCGAGCAGAAACTCATCTCAGAAGAGGATCTGGCAGCAAATGATATCCTGGATT
ACAAGGATGACGACGATAAGGTTTAA



[View online »](#)

Protein Sequence: >RC209887 protein sequence
 Red=Cloning site Green=Tags(s)

MRTEAEAAGPPLEPGDFVQLPVPVIQQLYHWDCGLACSRMVLRYLGQLDDSEFERALQKLQLTRSIWTID
 LAYLMHHFGVRHRFCTQTLGVDKGYKNQSFYRKHFDEETRVNQLFAQAKACKVLVEKCTVSVKDIQAHL
 AQGHVAIVLVNSGVLHCDLCSSPVKYCCFTPSGHHCFCRTPDYQGHFIVLRGYNRATGCIFYNNPAYADR
 MCSTISISNFEEARTSYGTDEDILFVYLDS

TRTRPLEQKLISEEDLAANDILDYKDDDDKV

Chromatograms: https://cdn.origene.com/chromatograms/mk6358_h01.zip

Restriction Sites: SgfI-MluI

Cloning Scheme:

Cloning sites used for ORF Shuttling:



* The last codon before the Stop codon of the ORF

ACCN: NM_031444

ORF Size: 3696 bp

OTI Disclaimer: The molecular sequence of this clone aligns with the gene accession number as a point of reference only. However, individual transcript sequences of the same gene can differ through naturally occurring variations (e.g. polymorphisms), each with its own valid existence. This clone is substantially in agreement with the reference, but a complete review of all prevailing variants is recommended prior to use. [More info](#)

OTI Annotation: This clone was engineered to express the complete ORF with an expression tag. Expression varies depending on the nature of the gene.

Components: The ORF clone is ion-exchange column purified and shipped in a 2D barcoded Matrix tube containing 10ug of transfection-ready, dried plasmid DNA (reconstitute with 100 ul of water).

- Reconstitution Method:**
1. Centrifuge at 5,000xg for 5min.
 2. Carefully open the tube and add 100ul of sterile water to dissolve the DNA.
 3. Close the tube and incubate for 10 minutes at room temperature.
 4. Briefly vortex the tube and then do a quick spin (less than 5000xg) to concentrate the liquid at the bottom.
 5. Store the suspended plasmid at -20°C. The DNA is stable for at least one year from date of shipping when stored at -20°C.

RefSeq: [NM_031444.1](#)

RefSeq Size: 3630 bp

RefSeq ORF: 723 bp

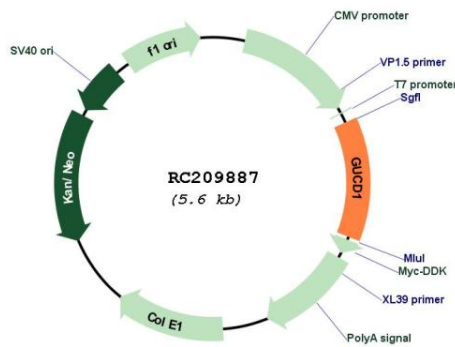
Locus ID: 83606

UniProt ID: [Q96NT3](#)

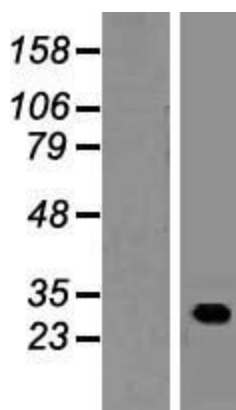
Cytogenetics: 22q11.23

MW: 27.2 kDa

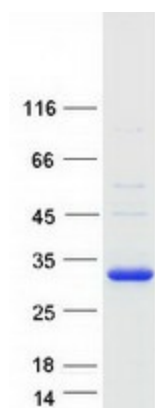
Product images:



Circular map for RC209887



Western blot validation of overexpression lysate (Cat# [LY410517]) using anti-DDK antibody (Cat# [TA50011-100]). Left: Cell lysates from untransfected HEK293T cells; Right: Cell lysates from HEK293T cells transfected with RC209887 using transfection reagent MegaTran 2.0 (Cat# [TT210002]).



Coomassie blue staining of purified GUCD1 protein (Cat# [TP309887]). The protein was produced from HEK293T cells transfected with GUCD1 cDNA clone (Cat# RC209887) using MegaTran 2.0 (Cat# [TT210002]).