

## Product datasheet for **RC209884**

### **B3GALTL (B3GLCT) (NM\_194318) Human Tagged ORF Clone**

#### **Product data:**

Product Type:	Expression Plasmids
Product Name:	B3GALTL (B3GLCT) (NM_194318) Human Tagged ORF Clone
Tag:	Myc-DDK
Symbol:	B3GALTL
Synonyms:	B3GALTL; B3Glc-T; B3GTL; beta3Glc-T; Gal-T
Mammalian Cell Selection:	Neomycin
Vector:	pCMV6-Entry (PS100001)
E. coli Selection:	Kanamycin (25 ug/mL)



[View online »](#)

**ORF Nucleotide Sequence:**

>RC209884 ORF sequence  
 Red=Cloning site Blue=ORF Green=Tags(s)

TTTTGTAATACGACTCACTATAGGGCGGCCGGAATTCGTCGACTGGATCCGGTACCGAGGAGATCTGCC  
 GCC**GCGATCGCC**

ATGCGGCCGCCCGCTGCTGGTGGCTGCTCGCGCCGCCGCGCTGCTCGCGCTCCTCACCTGCTCCCTGG  
 CTTTTGGTTGGCTTCTGAAGATACAAAGAAAGAGGTCAAGCAGTCTCAGGATTTGGAGAAAAGTGGTAT  
 ATCAAGGAAAAATGACATAGACTTAAAAAGAAATTGATTTCGTCATCCAGAGTCAAAGTAATCTTTTCAT  
 GCAAAGAGAGCAGAGCAGTTAAAAAAGCATCTTAAAGCAGGCTGCAGATCTTACACAGGAGCTCCCCA  
 GTGTCCTCCTCTCATCAGCTGGCTAAACAAGAAGGTGCATGGACCATACTTCCGTTGTTACCGCACTT  
 TTCTGTAACATATAGCAGAAATTCATCTTGGATTTTCTTCTGTAAGAAGAGACAAGAATACAGATTCCA  
 AAACCTTGGAAACCCTCAGAAGATATGACCCCTCTAAGGAATGGTTTTTGGGAAAAGCATTACATGATG  
 AAGAAGCTACAATAATTCACCATTATGCCTTTTCCGAGAATCCTACAGTTTTTAAGTATCCAGACTTTGC  
 TGCAGGCTGGGCCTTAAGTATTCACCTTGTAAACAAGCTTACCAAGAGACTAAAGAGTGAATCCTTGAAA  
 TCCGACTTTACAATAGATTTAAACATGAGATTGCCCTTACATCTGGGACAAAGGCGGAGGACCTCCCC  
 TGACCCAGTGCCTGAGTTTTGTACCAATGACGTGGACTTCTACTGTGCTACCACATTCCATTCTTTTCT  
 ACCGCTTTGTAGAAAGCCAGTGAAGAAGAAGGATATTTTTGTTGCAGTAAAAACATGCAAGAAATTTTCAT  
 GGTGACAGAAATGCCTATTGTTAAGCAGACTTGGGAGAGCCAGGCAAGTCTCATTGAATACTATAGTGACT  
 ATACTGAAATTCATTCTACTGTGGATTTGGGAATTCCTAATACAGATAGAGGTCATTGTGGAAAAGAC  
 ATTTGCCATTTTGGAAAGATTTCTGAATCGTAGCCAGGACAAAACAGCATGGTTAGTCATTGTGGATGAT  
 GATACATTAATAAGTATCTCCAGGCTCCAGCACTTGGTGGCTACAGCTACATCACGGGAGGAGGAATGGT  
 TGGGAGAGCGCTACGGCTACGGCTGGGCACTGGTGGCTACAGCTACATCACGGGAGGAGGAATGGT  
 CTTCAGCAGAGAAGCCGTCAGGAGACTTCTCGCCAGTAAATGTCGATGCTACAGCAATGATGCTCCCGAT  
 GATATGGTCTGGGAATGTGCTTTAGTGGCTTGGGAATCCCTGTGACACAGCCCTCTCTTCCATCAGG  
 CTCGGCCGGTGGATTACCCTAAGGACTACCTTTCTCATCAAGTCCCATATCGTTCCACAAAACACTGGAA  
 CATCGATCCAGTGAAGGTGATTTACATGGTTGGCACCCAGTGACGAAGACAAAGCCAGGAGGAGACA  
 CAGAAAGGTTTTTCGAGAGGAGTTA

**ACGCGT**ACGCGGCCGCTCGAGCAGAAACTCATCTCAGAAGAGGATCTGGCAGCAAATGATATCCTGGATT  
 ACAAGGATGACGACGATAAGGTTTAA

**Protein Sequence:**

>RC209884 protein sequence  
 Red=Cloning site Green=Tags(s)

MRPPACWLLAPPALLALLTCSLAFGLASEDTKKEVKQSQDLEKSGISRKNDIDLKGIQVFIQSQNSFH  
 AKRAEQLKKSILKQAADLTQELPSVLLHQLAKQEGAWTILPLLPHFSVTYSRNSSWIFFCEEETRIQIP  
 KLLLETLRRYDPSKEWFLGKALHDEEATIIHHYAFSENPTVFKYPDFAAGWALSIPLVNKLTKRLKSESLK  
 SDFITDLKHEIALYIWDKGGPPLTPVPEFCTNDVDFYCATTFFHSFLPLCRKPKVKKKIDIFVAVKTCCKFH  
 GDRMPIVKQTWESQASLIEYYSYDPTENSIPVLDLGPNTDRGHGKTFAILERFLNRSQDKTAWLVIVDD  
 DTLISISRLQHLLSCYDSGKPVFLGERYGGLTGGYSYITGGGMVFSREAVRRLASKCRCYSNDAPD  
 DMVLGMCFSGLGIPVTHSPLFHQARPVDYPKDYLSHQVPI SFHKHWNIDPVKVFYFWLAPSDKARQET  
 QKGFREEL

**TRTRPLEQKLISEEDLAANDILDYKDDDDKV**

**Chromatograms:**

[https://cdn.origene.com/chromatograms/mk6358\\_a01.zip](https://cdn.origene.com/chromatograms/mk6358_a01.zip)

**Restriction Sites:**

Sgfl-Mlul

**Cloning Scheme:**


**ACCN:** NM\_194318

**ORF Size:** 1494 bp

**OTI Disclaimer:** The molecular sequence of this clone aligns with the gene accession number as a point of reference only. However, individual transcript sequences of the same gene can differ through naturally occurring variations (e.g. polymorphisms), each with its own valid existence. This clone is substantially in agreement with the reference, but a complete review of all prevailing variants is recommended prior to use. [More info](#)

**OTI Annotation:** This clone was engineered to express the complete ORF with an expression tag. Expression varies depending on the nature of the gene.

**Components:** The ORF clone is ion-exchange column purified and shipped in a 2D barcoded Matrix tube containing 10ug of transfection-ready, dried plasmid DNA (reconstitute with 100 ul of water).

**Reconstitution Method:**

1. Centrifuge at 5,000xg for 5min.
2. Carefully open the tube and add 100ul of sterile water to dissolve the DNA.
3. Close the tube and incubate for 10 minutes at room temperature.
4. Briefly vortex the tube and then do a quick spin (less than 5000xg) to concentrate the liquid at the bottom.
5. Store the suspended plasmid at -20°C. The DNA is stable for at least one year from date of shipping when stored at -20°C.

**RefSeq:** [NM\\_194318.2](#), [NP\\_919299.2](#)

**RefSeq Size:** 4221 bp

**RefSeq ORF:** 1497 bp

**Locus ID:** 145173

**UniProt ID:** [Q6Y288](#)

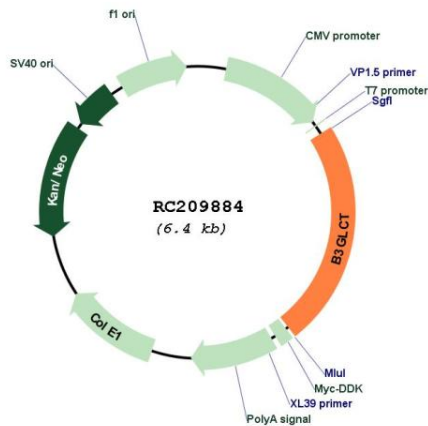
**Cytogenetics:** 13q12.3

**Protein Families:** Transmembrane

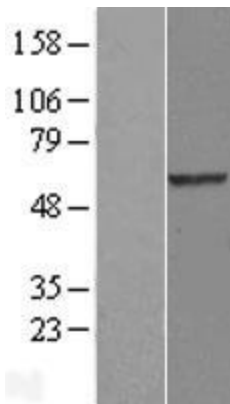
**MW:** 56.6 kDa

**Gene Summary:** The protein encoded by this gene is a beta-1,3-glucosyltransferase that transfers glucose to O-linked fucosylglycans on thrombospondin type-1 repeats (TSRs) of several proteins. The encoded protein is a type II membrane protein. Defects in this gene are a cause of Peters-plus syndrome (PPS).[provided by RefSeq, Mar 2009]

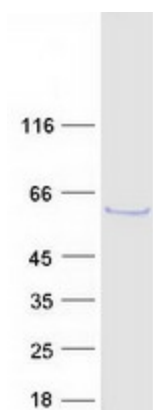
**Product images:**



Circular map for RC209884



Western blot validation of overexpression lysate (Cat# [LY405167]) using anti-DDK antibody (Cat# [TA50011-100]). Left: Cell lysates from untransfected HEK293T cells; Right: Cell lysates from HEK293T cells transfected with RC209884 using transfection reagent MegaTran 2.0 (Cat# [TT210002]).



Coomassie blue staining of purified B3GLCT protein (Cat# [TP309884]). The protein was produced from HEK293T cells transfected with B3GLCT cDNA clone (Cat# RC209884) using MegaTran 2.0 (Cat# [TT210002]).