

Product datasheet for **RC209883**

ITPRIP (NM_033397) Human Tagged ORF Clone

Product data:

Product Type:	Expression Plasmids
Product Name:	ITPRIP (NM_033397) Human Tagged ORF Clone
Tag:	Myc-DDK
Symbol:	ITPRIP
Synonyms:	bA127L20; bA127L20.2; DANGER; KIAA1754
Mammalian Cell Selection:	Neomycin
Vector:	pCMV6-Entry (PS100001)
E. coli Selection:	Kanamycin (25 ug/mL)



[View online »](#)

ORF Nucleotide Sequence:

>RC209883 ORF sequence
 Red=Cloning site Blue=ORF Green=Tags(s)

TTTTGTAATACGACTCACTATAGGGCGGCCGGAATTCGTCGACTGGATCCGGTACCGAGGAGATCTGCC
 GCC**CGGATCGCC**

ATGGCCATGGGGCTCTCCGCGTGTGTCTGGTGGTGGTGACGGCCATCATCAACCACCCGCTGCTGTTC
 CGCGGGAGAACGCCACAGTCCCCGAGAACGAGGAGGAGATCATCCGCAAGATGCAGGCGCACAGGAGAA
 GCTGCAGCTGGAGCAGTTGCGCCTGGAGAGGAGTGGCTCGGCTGGCGGCCGAAAAGGAGGCACCTGGAG
 CAGGTGGCGGAGGAGGCGAGGCAGCAGAACGAGACACGCGTGGCCTGGGACCTCTGGAGCACCTCTGCA
 TGATCCTCTTCTGATGATCGAGGTGTGGCGCAGGACCACCAGGAGGGGCCCTCACCTGAGTGCCTGGG
 CGGTGAGGAGGATGAGCTGCCTGGGCTGGGGGGCGCCCCCTTGCAGGGCCTCACCTGCCAACAAAGGCC
 ACGCTTGGCCACTTTTATGAGCGCTGCATCCGGGGGGCCACGGCCGATGCAGCCCGTACCCGGGAGTTCC
 TGAAGGCTTCGTGGATGACTTGTGGAAGCCCTGAGGAGCCTCTGCAACCGGGACACCGACATGGAGGT
 GGAGGACTTCATTGGCGTGGACAGCATGTACGAGAAGTGGCAGGTGGACAGGCCACTGCTGTGCCACCTT
 TTCGTGCCCTTACACCCCCGAGCCCTACCGCTTCCACCCAGAGCTCTGGTGTCCGGCCGCTCAGTGC
 CCCTGGATCGCCAGGGCTACGGCCAGATCAAGGTGGTCCGCGCCGATGGGACACATTGAGCTGCATCTG
 CGGCAAGACCAAGCTCGGGGAAGACATGCTGTCTCCTGCACGGCAGGAACAGCATGGCGCCTCCCTGC
 GGCGACATGGAGAACCTGCTGTGTGCCACAGATTCCCTGTACCTGGACACGATGCAGGTCATGAAGTGGT
 TCCAGACGGCCCTCACAGAGCCTGGAAGGGCATCGCCCAAGTACGAGTTCGACCTGGCCTTTGGCCA
 GCTGGACAGCCCGGGTCCCTGAAGATCAAGTTCGGTTCAGGGAAGTTCATGCCCTTCAACCTGATTCT
 GTGATCCAGTGTGATGACTCGGACCTGTACTTTGTCTCCACCTTCCCAGGGAGCCCTCTGAGGGCACCC
 CAGCCTCCAGCACAGACTGGCTCCTGTCTTTGCTGTCTATGAGCGACACTTCTCAGGACACTAAA
 GGCACTGCCCGAGGGCGCCTGCCACCTCAGCTGCCTGCAGATAGCATCCTTCTGTCTCCAAGCAGAGC
 CGCCTGACCGGTCCCAGCGGGCTCAGCAGCTACCACCTGAAGACGGCCCTACTGCACCTCCTACTCTCC
 GGCAGGCCCGGACTGGAAGGGCGGGCAGCTGGACGCTCGTCTGCACGAGTTGCTGTGCTTCTGGAGAA
 GAGCTTGTCCAGAAGAAGCTCCACCCTTCTTCCATCGGCAACCGCAAGGTGCCTGAGGCCATGGGACTC
 CCTGAGGCCGTGCTCAGGGCCGAGCCCTCAACCTTCTCCGGCCCTTCTGCTGCAGCGAAGCCTTACC
 GTAAGACTGGACTCCTTCTATGAGATGCTCAAGAATGCCCCAGCGCTCATTAGCGAGTATCCCTACA
 TGTCCTCCAGACCAGCCTACCCAAAAAGC

AG**CGGACCG**ACGCGTACGCGGCCGCTCGAGCAGAAACTCATCTCAGAAGAGGATCTGGCAGCAAATGATATCC
 TGGATTACAAGGATGACGACGATAAGGTTTAA

Protein Sequence:

>RC209883 protein sequence
 Red=Cloning site Green=Tags(s)

MAMGLFRVCLVVVTAIINHPLLPRENATVPENEEIIRKMQAHQEKLQLEQLRLEEEVARLAAEKEALE
 QVAEEGRQNETRVAWDLWSTLCMILFLMIEVWRQDHQEGPSPECLGGEDELPLGGAPLQGLTLPNKA
 TLGHFYERCIRGATADAARTREFLEGFVDDLLEALRSLCNRDMEVEDFIGVDSMYENWQVDRPLLCHL
 FVPFTPPEPYRFHPELWCSGRSVPLDRQGYGQIKVVRADGDTLSCICGKTKLGEDMLCLLHGRNSMAPP
 GDMENLLCATDSL YLDTMQVMWFQAL TRAWKGI AHKYEFDLAFGLDSPGSLKIKFRSGKFMPFNLIP
 VIQCDDSDLYFVSHLPREPSEGTPASSTDWLLSFVYERHFLRTLKALPEGACHLSCLQIASFLLSKQS
 RLTPGSLSSYHLKTALLHLLLRQAADWKAGQLDARLHELLCFLEKSLQKLLHHFFIGNRKVPEAMGL
 PEAVLRAEPLNLF RPFVLQRSLYRKTLD SFYEMLNKAPALISEYSLHVPSDQPTPKS

SGPTRTRPLEQKLISEEDLAANDILDYKDDDDKV

Chromatograms:

https://cdn.origene.com/chromatograms/mk6186_b05.zip

Restriction Sites:

SgfI-RsrII

Cloning Scheme:


ACCN: NM_033397

ORF Size: 1641 bp

OTI Disclaimer: The molecular sequence of this clone aligns with the gene accession number as a point of reference only. However, individual transcript sequences of the same gene can differ through naturally occurring variations (e.g. polymorphisms), each with its own valid existence. This clone is substantially in agreement with the reference, but a complete review of all prevailing variants is recommended prior to use. [More info](#)

OTI Annotation: This clone was engineered to express the complete ORF with an expression tag. Expression varies depending on the nature of the gene.

Components: The ORF clone is ion-exchange column purified and shipped in a 2D barcoded Matrix tube containing 10ug of transfection-ready, dried plasmid DNA (reconstitute with 100 ul of water).

- Reconstitution Method:**
1. Centrifuge at 5,000xg for 5min.
 2. Carefully open the tube and add 100ul of sterile water to dissolve the DNA.
 3. Close the tube and incubate for 10 minutes at room temperature.
 4. Briefly vortex the tube and then do a quick spin (less than 5000xg) to concentrate the liquid at the bottom.
 5. Store the suspended plasmid at -20°C. The DNA is stable for at least one year from date of shipping when stored at -20°C.

RefSeq: [NM_033397.3](#)

RefSeq Size: 6825 bp

RefSeq ORF: 1644 bp

Locus ID: 85450

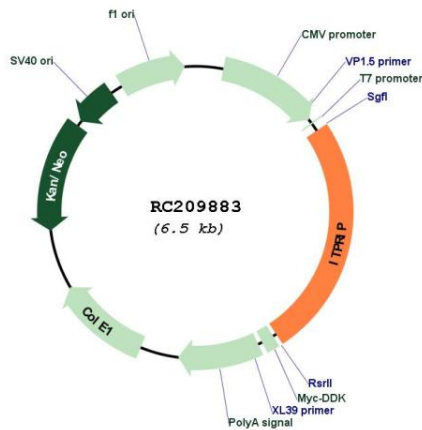
UniProt ID: [Q8IWB1](#)

Cytogenetics: 10q25.1

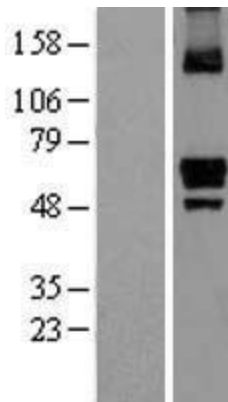
MW: 62.1 kDa

Gene Summary: This gene encodes a membrane-associated protein that binds the inositol 1,4,5-trisphosphate receptor (ITPR). The encoded protein enhances the sensitivity of ITPR to intracellular calcium signaling. Alternative splicing results in multiple transcript variants. [provided by RefSeq, Dec 2012]

Product images:



Circular map for RC209883



Western blot validation of overexpression lysate (Cat# [LY403247]) using anti-DDK antibody (Cat# [TA50011-100]). Left: Cell lysates from untransfected HEK293T cells; Right: Cell lysates from HEK293T cells transfected with RC209883 using transfection reagent MegaTran 2.0 (Cat# [TT210002]).