

Product datasheet for **RC209881**

SLC16A10 (NM_018593) Human Tagged ORF Clone

Product data:

Product Type:	Expression Plasmids
Product Name:	SLC16A10 (NM_018593) Human Tagged ORF Clone
Tag:	Myc-DDK
Symbol:	SLC16A10
Synonyms:	MCT10; PRO0813; TAT1
Mammalian Cell Selection:	Neomycin
Vector:	pCMV6-Entry (PS100001)
E. coli Selection:	Kanamycin (25 ug/mL)



[View online »](#)

ORF Nucleotide Sequence:

>RC209881 representing NM_018593.
 Blue=ORF Red=Cloning site Green=Tag(s)

```
GCTCGTTTAGTGAACCGTCAGAATTTTGTAAACGACTCACTATAGGGCGGCCGGGAATTCGTGACTG
GATCCGGTACCGAGGAGATCTGCCGCCGCGATCGCC
ATGGTGTCTCCCAGGAGGAGCCGGACTCCGCGGGGGCAGGAGCGAGGCCAGCCGCTCGGCCCGCG
CCCACGGGGCCGCTCCGCCCGCCGGCCGGACCCCTCGGACAGCCCCGAGGCGGCTGTGAGAAGGTG
GAGGTGGAGCTGGCGGGGCCGGCGACCGCGGAGCCCATGAGCCCCGAACCCCCGAGGGCGGCTGG
GGCTGGCTGGTGTGCTGGCGGCCATGTGGTGCAACGGGTCGGTGTTCGGCATCCAGAACGCTTGCGGG
GTGCTCTTCGTGTCCATGCTGGAACCTTCGGCTCCAAAGACGATGACAAGATGGTCTTTAAGACAGCA
TGGGTAGTTCTCTCCATGGGATGATTTCTTTTGTGCCAATAGTCAGCGTCTTCACAGACCTA
TTTGGTTGTCGGAACAGCTGTCGTGGGTGCTGCTGTTGGATTTGTTGGGCTCATGTCCAGTCTTTT
GTAAGTCCATCGAGCCTCTGTACCTTACCTATGGAATCATATTTGCCTGCGGCTGCTCCTTTCATAC
CAGCCTTCATTGGTCATTTTGGGACACTATTTCAAGAAGCGCCTTGGACTGGTGAATGCCATTGCACT
GCTGGCAGCAGTGTCTTACAATCTGCTGCCTTTGCTCTTAAGGTTCTGATTGACAGCGTGGGCTC
TTTTACACATTGAGGGTGTCTGCATCTTCATGTTTGTCTCTTTCTGGCTGGCTTACTTACCGACCT
CTTGCTACCAAGTACCAAAGATAAAGAGAGTGGAGGTAGCGGATCCTCCCTCTTTCCAGGAAAAAGTTC
AGTCTCCAAAAAATTTTCAATTTTGCATCTTCAAGGTGACAGCTTATGCAAGTGTGGCAGTTGGA
ATACCACTTGCACTTTTGGATACTTTGTGCCTTATGTTCACTTATGAAACATGTAATGAAAGATTT
CAAGATGAAAAAATAAAGAGGTTGTTCTCATGTGCATTGGCGTCACTTCAGGAGTTGGACGACTGCTC
TTTGGCCGGATTGAGATTATGTGCTGGTGTGAAGAAGTTTATCTACAGGACTCTCCTTTTCTTC
ATTGGTCTGATGCCATGATGATTCCTCTGTGTAGCATCTTTGGGGCCCTATTGCTGTGTGCCTCATC
ATGGGTCTTTCGATGGATGCTTCAATTTCCATTATGGTCCCATAGCCTTTGAGTTAGTTGGTCCCAG
GATGCTCTCCCAAGCAATTGGATTTCTGCTCGGATTCATGTCTATACCCATGACTGTTGGCCACCCATT
GCAGGGTACTTCTGTGACAACTGGGCTCCTATGATGTGGCATTCTACCTCGCTGGAGTCCCTCCCTT
ATTGGAGGTGCTGTGCTTTGTTTATCCCGTGGATCCATAGTAAGAAGCAAAGAGAGATCAGTAAACC
ACTGGAAGAAAGATGGAGAAAATGTTGAAAACCAGAACTCTCTGCTGTCAAGTTTCTGGAATG
TTCAAGAAAGAATCTGACTCTATTATT
ACGCGTACGCGGCCGCTCGAGCAGAACTCATCTCAGAAGAGGATCTGGCAGCAAATGATATCCTGGAT
TACAAGGATGACGACGATAAGGTTTAAACGGCCGGC
```

Protein Sequence:

>Peptide sequence encoded by RC209881
 Blue=ORF Red=Cloning site Green=Tag(s)

```
MVLSQEEPDSARGTSEAQPLGPAPTGAAPPPGPGSPDSPEAAVEKVEVELAGPATAEPHEPPEPPEGGW
GWLVMLAAMWCNGSVFGIQNACGVLFVSMLETFGSKDDDKMVFKTAWVGSLSMGMIFFCCPIVSVFIDL
FGCRKTAVVGAAVGFVGLMSSSFVSSIEPLYLYTYGIIIFACGCSFAYQPSLVILGHYFKRLLVNGIYT
AGSSVFTILLPLLLRVLIDSVGLFYTLRVLCIFMFLVLAGFTYRPLATSTKDKESSGSSSLFSRKKF
SPPKKIFNFAIFKVTAYAVWAVGIPLALFGYFVPYVHLMKHVNERFQDEKNKEVLMCIGVTSVGRLL
FGRIADYVPGVKVYLQVLSFFFIGLMSMMIPLCSIFGALIAVCLIMGLFDGCFISIMAPIAFELVGAQ
DVSQAIGFLLGFMSIPMTVGPPIAGLLRDKLGSYDVAFYLAGVPLIGGAVLCFIPWIHSHKQREISKI
TGKEKMEKMLENQNSLLSSSSGMFKKESDSII
TRTRPLEQKLISEEDLAANDILDYKDDDDKV
```

Chromatograms:

https://cdn.origene.com/chromatograms/mk8120_f05.zip

Restriction Sites:

Sgfl-MluI

Cloning Scheme:



ACCN: NM_018593

ORF Size: 1545 bp

OTI Disclaimer: The molecular sequence of this clone aligns with the gene accession number as a point of reference only. However, individual transcript sequences of the same gene can differ through naturally occurring variations (e.g. polymorphisms), each with its own valid existence. This clone is substantially in agreement with the reference, but a complete review of all prevailing variants is recommended prior to use. [More info](#)

OTI Annotation: This clone was engineered to express the complete ORF with an expression tag. Expression varies depending on the nature of the gene.

Components: The ORF clone is ion-exchange column purified and shipped in a 2D barcoded Matrix tube containing 10ug of transfection-ready, dried plasmid DNA (reconstitute with 100 ul of water).

Reconstitution Method:

1. Centrifuge at 5,000xg for 5min.
2. Carefully open the tube and add 100ul of sterile water to dissolve the DNA.
3. Close the tube and incubate for 10 minutes at room temperature.
4. Briefly vortex the tube and then do a quick spin (less than 5000xg) to concentrate the liquid at the bottom.
5. Store the suspended plasmid at -20°C. The DNA is stable for at least one year from date of shipping when stored at -20°C.

RefSeq: [NM_018593.5](#)

RefSeq Size: 2918 bp

RefSeq ORF: 1548 bp

Locus ID: 117247

UniProt ID: [Q8TF71](#)

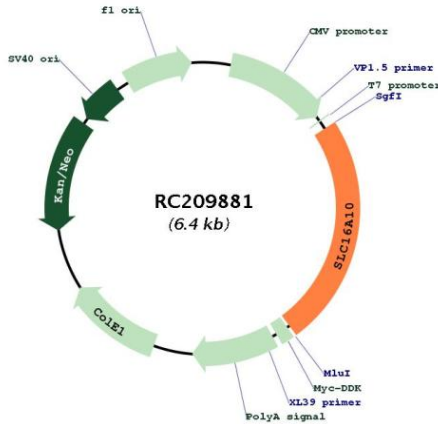
Cytogenetics: 6q21

Protein Families: Transmembrane

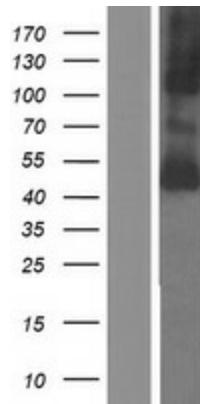
MW: 55.5 kDa

Gene Summary: SLC16A10 is a member of a family of plasma membrane amino acid transporters that mediate the Na(+)-independent transport of aromatic amino acids across the plasma membrane.[supplied by OMIM, Apr 2004]

Product images:



Circular map for RC209881



Western blot validation of overexpression lysate (Cat# [LY412996]) using anti-DDK antibody (Cat# [TA50011-100]). Left: Cell lysates from untransfected HEK293T cells; Right: Cell lysates from HEK293T cells transfected with RC209881 using transfection reagent MegaTran 2.0 (Cat# [TT210002]).