

Product datasheet for RC209880

SLC12A6 (NM_001042495) Human Tagged ORF Clone

Product data:

Product Type:	Expression Plasmids
Product Name:	SLC12A6 (NM_001042495) Human Tagged ORF Clone
Tag:	Myc-DDK
Symbol:	SLC12A6
Synonyms:	ACCPN; KCC3; KCC3A; KCC3B
Mammalian Cell Selection:	Neomycin
Vector:	pCMV6-Entry (PS100001)
E. coli Selection:	Kanamycin (25 ug/mL)
ORF Nucleotide Sequence:	>RC209880 ORF sequence Red=Cloning site Blue=ORF Green=Tags(s)

TTTTGTAATACGACTCACTATAGGGCGGCCGGAATTCGTCGACTGGATCCGGTACCGAGGAGATCTGCC
GCC**CGATCGCC**

ATGAGTGAGATGTCTGGGGCCACCACTTCGCTGGCAACTGTTGCACTGGATCCACCCAGTGACCGGACTT
CTCACCCCGAGGATGTCATCGAGGACCTGAGTCAGAACTCCATCACAGGGGAACACAGCCAACTGTTAGA
CGACGGACATAAGAAAGCTCGAAATGCTTATCTCAATAATTCCAATTATGAAGAAGGAGATGAATATTTT
GATAAAAAATTTGGCACTCTTTGAGGAAGAAATGGACACCAGACCGAAGGTGTCTTCCCTCCTCAACCGCA
TGGCCAATTACACTAATCTGACTCAAGGAGCAAAGGAACATGAAGAGGCAGAAAACATCACTGAAGGGAA
AAAGAAGCCACCAAGACCCCAATGGGTACCTTCATGGGTGTCTACCCCATGTCTACAAAATATT
TTTGGAGTGATCCTTTTTTACGCCTTACATGGGTGGTGGGCACAGCTGGAGTTCTTCAGCTTTTGCAA
TTGTCTTATCTGCTGCTGTACAATGTTGACTGCTATCTCCATGAGTGCCATTGCCACTAATGGAGT
GGTGCCAGCTGGGGGCTCATACTTTATGATTTCCCGGGCACTGGGCCAGAGTTTGGTGGGGCTGTTGGC
CTCTGCTTTTATCTTGGTACCACATTTGCAGCAGCCATGTACATCCTTGGTGCCATTGAAATCTTTCTGG
TCTATATCGTCCCCGAGCTGCCATCTTCACAGTGATGACGCACTCAAGGAATCAGCAGCCATGCTAAA
TAACATGCGTGTCTACGGCACAGCTTTCTTGGTCTTATGGTATTAGTGGTATTTATCGGCGTACGCTAT
GTGAACAAGTTTGCCTCACTTTTCTGGCCTGTGTCATTGTGTCATCTTGCCATCTATGCTGGAGCCA
TCAAGTCTTCTTTGCTCCTCCACACTTCCCGGTCTGCATGCTGGGTAACCGCACCTTTTCATCAAGACA
CATTGACGTTTGTCTAAGACCAAGGAAATTAACAACATGACAGTCCCATCAAAGTTATGGGATTCTTC
TGTAACCTCGAGTCAATTTTTCAATGCCACCTGTGATGAATACTTTGTTACAATAACGCTCACTTCAATCC
AGGGCATTCTGGATTGGCTAGTGGTATAATTACAGAGAATCTTTGGAGTAATTACCTACCCAAGGGAGA
GATCATCGAAAAGCCTTCAGCCAAATCTTCTGATGTCTTAGGCAGCTTAAACCATGAATATGTTCTTGT
GACATCACCACTCCTTCAGCTTCTGGTGGGAATCTTCTTTCCCTCTGTTACAGGTATCATGGCTGGAT
CAAACAGATCTGGAGATCTGAAAGATGCTCAGAAGTCTATTCCGATTGGTACTATCCTTGCCATCCTGAC
CACCTCCTTTGTTATTTAAGCAATGTTGTCCTTTTGGTGCATGTATTGAAGGGTTGTTCTCAGAGAC



[View online >](#)

AAGTTCGGTGATGCTGTGAAAGGTAATTTGGTGGTAGGCACCTTATCTTGCCATCCCCATGGGTGATTG
 TTATTGGCTCCTTCTTTCAACATGTGGGGCTGGACTTCAGAGCCTCACAGGTGCACCGAGGCTGTACA
 AGCTATTGCCAAGGATAACATCATACCGTTTCTGAGGGTTTTGGCCACAGCAAAGCCAATGGGGAACCT
 ACCTGGGCTTTACTTCTAACTGCTGCCATTGCAGAGCTTGAATACTCATTGCCTCCCTGGATCTTGTGG
 CCCCATTCTTTCCATGTTTTTCTCATGTGTTACCTCTTTGAACTTGGCATGTGCCTTGCAAACATT
 ACTTCGAACACCCAACCTGGAGACCCCGATTCCGCTACTACCATTGGGCCCTTTCTTTATGGGAATGAGT
 ATCTGTCTGGCTCTGATGTTTCTTTCTCTGGTATTATGCCATTGTAGCCATGGTAATAGCTGGTATGA
 TCTACAAGTACATTGAATACCAAGGAGCTGAGAAAGAATGGGGTGATGGTATCCGTGGGCTGTCCCTCAG
 TGCAGCCCGTTTTGCTTTGCTTCGATTGGAGGAAGGACCTCCACACACTAAAACTGGAGGCCTCAGTTG
 CTTGTATTACTGAACTAGATGAAGACTTACATGTCAAGCATCCTCGCCTCCTCACCTTTGCCTCACAGC
 TCAAAGCAGGAAAAGGTCTCACTATTGTGGGCTGTGCATCGTGGGGAACCTCCTAGAGAACTACGGTGA
 AGCTTTAGCTGCTGAGCAGACCATAAAGCACCTAATGGAGGCAGAGAAGGAAAAGGATTCTGCCAGCTG
 GTGGTGGCCGCAAGCTGAGAGAGGGCATTCCACCTCATCCAGTCATGTGGCCTTGGGGGCATGAAGC
 ACAACACGGTGGTATGGGCTGGCCTAATGGCTGGCGTCAAAGCGAAGATGCCCGCCTTGAAGACTTT
 TATTGGCACAGTTCGAGTGACAACCTGCTGCCATCTTGCCTGCTGGTGGCTAAAAACATCTCCTCTTT
 CCCAGCAATGTGGAGCAATTTCTGAGGGCAACATTGATGTGTGGTGGATTGTGCATGATGGGGGATGC
 TTATGCTACTACCATTCTACTGAAACAGCACAAGGTGTGGCGAAAGTGCAGCATACGGATCTTACAGT
 AGCCCAATTAGAAGACAACAGTATCCAAATGAAGAAGGACCTAGCCACCTTCTATATCACTTACGCATT
 GAGGCGGAGGTAGAAGTGGTGGAGATGCATGACAGTGATATACAGCATATACTTACGAGCGCACTTTGA
 TGATGGAACAAAGGTCCCAGATGCTTCGGCACATGCGGCTATCCAAAACAGAGCGAGACAGAGAGGCACA
 ATTGGTGAAGACCGAACTCAATGCTACGATTGACCAGCATTGGCTCTGATGAGGACGAAGAGACAGAA
 ACCTATCAGGAGAAGGTGCATGACTTGGACAAAAGACAAGTACATGGCATCCCGGGGACAAAAAGCGA
 AGTCAATGGAAGGATCCAGGACCTGCTTAACATGCGTCCGACCAGTCCAATGTGAGGCGCAATGATGCA
 AGCAGTGAAACTCAACGAGGTTATAGTTAACAAGTCCCATGAAGCAAAGCTGGTTTTATTGAATATGCCA
 GGGCCACCCGAAACCCTGAGGGTATGAAAACACTACATGGAGTTCCTAGAGGTGCTTACCAGGGACTAG
 AGCGAGTCTACTGTCCGGGGTGGTGGCAGTGAAGTATCACCATTATTCA

ACGCGTACGCGGCCGCTCGAGCAGAACTCATCTCAGAAGAGGATCTGGCAGCAATGATATCCTGGATT
 ACAAGGATGACGACGATAAGGTTTAA

Protein Sequence:

>RC209880 protein sequence
 Red=Cloning site Green=Tags(s)

MSEMSGATTSLATVALDPPSDRTSHPQDVIEDLSQNSITGEHSQLLDDGHKKARNAYLNNSNYEEGDEYF
 DKNLALFEEEMDRPKVSSLLNRMANYTNLTQGAKEHEEAENITEGKKPKTKTPQMGTFMGVYPPCLQNI
 FGVILFLRLTWVGTAGVLQAFIVLICCCCTMLTAISMSAIATNGVVPAGGSYFMISRALGPEFFGGAVG
 LCFYLGTTFAAAMYILGAIIEIFLVYIVPRAAIFHSDALKESAAMLNMRVYGTAFVLMVLVVF IGVRV
 VNKFASLFLACVIVSILAIYAGAIKSSFPAPPFPVCMLGNRTLSSRHIDVCSKTKEINNMTVPSKLVGFF
 CNSSQFFNATCDEYFVHNNVTSIQGIPGLASGIITENLWSNYLPKGEIIEKPSAKSSDVLGSLNHEYVLV
 DITTSFTLLVGFIFPSVTGIMAGSNRSGDLKDAQSIPIGTILAILTTSFVYLSNVVLFACIEGVVLRD
 KFGDAVKGNL VVGTLSWPSPWVIVIGSFFSTCGAGLQSLTGAPRLLQAI AKDNIIPFLRVFGHSHANGEP
 TWALLL TAAIAELGILIASLDL VAPILSMFFLMCYL FVNALACALQTLRLTPNWRPRFRYYHWAL SFGMS
 ICLALMFISSWYAI VAMVIAGMIYKYIEYQGAKEWGDGIRGLSL SAARFALLRLEEGPHTKNWRPQL
 LVLLKLDLHVKHPRLLTFASQLKAGKGLTIVGSVIVGNFLENYGEALAAEQTIKHLMEAEKVKGFQCL
 VVAAKLREGISHLIQSCGLGGMKHNTVVMGWPNQWRQSEDARAWKTFIGTVRVTAAHLALLVAKNISFF
 PSNVEQFSEGNIDVWVI VHDGMLMLLPFLKQHKVWRKCSIRIFTVAQLEDNSIQMKKDLATFLYHLRI
 EAEVEVEMHDSISAYTYERTLMMEQRSQMLRHMRLSKTERDREAQLVKDRNSMLRLTSIGSDEDEETE
 TYQEKVHMTWTKDKYMASRGQKAKSMGFQDLLNMRPDQSNVRRMHTAVKLNNEVI VNKSHAKLVLLNMP
 GPPRNPEGDENYMEFLEVLTEGLERVLLVRGGGSEVITIIYS

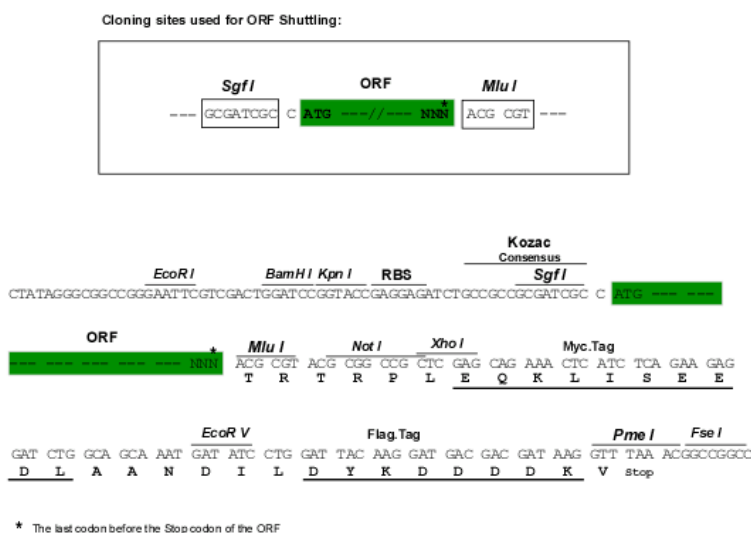
TRTRPLEQKLI SEEDLAANDILDYKDDDDKV

Chromatograms:

https://cdn.origene.com/chromatograms/mk6680_f01.zip

Restriction Sites: SgfI-MluI

Cloning Scheme:



ACCN: NM_001042495

ORF Size: 3273 bp

OTI Disclaimer: The molecular sequence of this clone aligns with the gene accession number as a point of reference only. However, individual transcript sequences of the same gene can differ through naturally occurring variations (e.g. polymorphisms), each with its own valid existence. This clone is substantially in agreement with the reference, but a complete review of all prevailing variants is recommended prior to use. [More info](#)

OTI Annotation: This clone was engineered to express the complete ORF with an expression tag. Expression varies depending on the nature of the gene.

Components: The ORF clone is ion-exchange column purified and shipped in a 2D barcoded Matrix tube containing 10ug of transfection-ready, dried plasmid DNA (reconstitute with 100 ul of water).

Reconstitution Method:

1. Centrifuge at 5,000xg for 5min.
2. Carefully open the tube and add 100ul of sterile water to dissolve the DNA.
3. Close the tube and incubate for 10 minutes at room temperature.
4. Briefly vortex the tube and then do a quick spin (less than 5000xg) to concentrate the liquid at the bottom.
5. Store the suspended plasmid at -20°C. The DNA is stable for at least one year from date of shipping when stored at -20°C.

RefSeq: [NM_001042495.1](#), [NP_001035960.1](#)

RefSeq Size: 7363 bp

RefSeq ORF: 3276 bp

Locus ID: 9990

UniProt ID: [Q9UHW9](#)

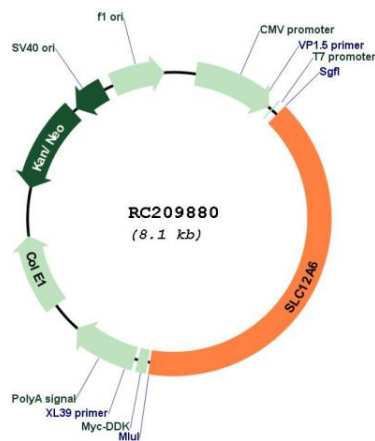
Cytogenetics: 15q14

Protein Families: Transmembrane

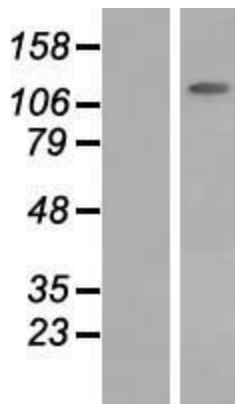
MW: 121.1 kDa

Gene Summary: This gene is a member of the K-Cl cotransporter (KCC) family. K-Cl cotransporters are integral membrane proteins that lower intracellular chloride concentrations below the electrochemical equilibrium potential. The proteins encoded by this gene are activated by cell swelling induced by hypotonic conditions. Alternate splicing results in multiple transcript variants encoding different isoforms. Mutations in this gene are associated with agenesis of the corpus callosum with peripheral neuropathy. [provided by RefSeq, Jul 2008]

Product images:



Circular map for RC209880



Western blot validation of overexpression lysate (Cat# [LY420941]) using anti-DDK antibody (Cat# [TA50011-100]). Left: Cell lysates from untransfected HEK293T cells; Right: Cell lysates from HEK293T cells transfected with [RC214078] using transfection reagent MegaTran 2.0 (Cat# [TT210002]).