

## Product datasheet for RC209877

### NAPE PLD (NAPEPLD) (NM\_198990) Human Tagged ORF Clone

#### Product data:

Product Type:	Expression Plasmids
Product Name:	NAPE PLD (NAPEPLD) (NM_198990) Human Tagged ORF Clone
Tag:	Myc-DDK
Symbol:	NAPE PLD
Synonyms:	C7orf18; FMP30; NAPE-PLD
Mammalian Cell Selection:	Neomycin
Vector:	pCMV6-Entry (PS100001)
E. coli Selection:	Kanamycin (25 ug/mL)
ORF Nucleotide Sequence:	>RC209877 ORF sequence Red=Cloning site Blue=ORF Green=Tags(s)

TTTTGTAATACGACTCACTATAGGGCGCCGGAATTCGTCGACTGGATCCGGTACCGAGGAGATCTGCC  
GCC**CGATCGCC**

ATGGATGAAAAAGAAAGCAACCAGTCTCTGATGACAAGCAGCCAATATCCTAAAGAAGCAGTAAGAAAAC  
GTCAAATTCAGCACGGAATTCGGAGCAAGTATTCTTCTAGGTTTTCTAGGAAAAGCTCAAACCTGGA  
TTATAGACTAGAAGAAGATGTAATAAATCCAAGAAAGGAAAAGATGGGAGATTTGTGAATCCGTGGCCA  
ACATGGAAAAACCCCTCTATTCCAAATGTTCTCAGATGGCTGATAATGGAGAAAGATCACAGCAGTGTT  
CAAGTTCTAAAGAGGAACTAGACAAAGAACTCCCAGTGCTTAAGCCATATTTTATCACTAACCCCTGAAGA  
AGCTGGAGTGAGGGAAGCTGGCTTAAGAGTCACATGGCTGGGACATGCCACGGTAATGGTGGAAATGGAT  
GAGCTCATATTTCTCACGGATCCCATCTTTAGCTCTCGTGCTTACCATCGCAGTACATGGTCCAAAGC  
GATTTCTGTCGTTCCCGTGCACAATAAGTGAACCTCCCTCAATAGATGCGGTCTTATCAGTCACAACCA  
CTATGACCATCTGGACTACAATTCTGTCAATGCTTTGAATGAGCGATTTGGTAATGAGTTGAGATGGTTT  
GTGCTTTGGGTCTCCTTGACTGGATGCAAAAATGTGGCTGTGAGAAATGTGATTGAGTTGGACTGGTGGG  
AGGAGAATTGTGTCGCCGGACATGATAAGGTCACTTTTGTCTTACACCTTCCAGCACTGGTGTAAAAG  
GACTCTAATGGATGACAACAAGGTGCTATGGGGCAGCTGGTCTGTCTTGGGGCCTTGAATCGATTTTTT  
TTCGCAGGAGATACTGGTTATTGCCCTGCTTTTGAAGAGATAGGAAAAGATTTGGACCTTTTGACCTTG  
CAGCTATTTCCATCGGAGCTTATGAACCGAGGTGGTTTATGAAATACCAGCATGTAGACCCAGAAGAAGC  
TGTAAGGATTCACACTGATGTCCAAACAAGAAATCTATGGCAATTCAGTGGGAACTTTTGCTTAGCA  
AATGAGCATTACTTAGAGCCTCCAGTGAAGCTGAATGAAGCTCTAGAGAGATACGGACTTAACGCTGAAG  
ATTTTTTTGTCTTGAAGCATGGAGAATCAAGATACCTAAATAATAATGATGAAAACCTT

**ACGGT**ACGGGCCGCTCGAGCAGAACTCATCTCAGAAGAGGATCTGGCAGCAATGATATCCTGGATT  
ACAAGGATGACGACGATAAGGTTTAA



[View online >](#)



**Reconstitution Method:**

1. Centrifuge at 5,000xg for 5min.
2. Carefully open the tube and add 100ul of sterile water to dissolve the DNA.
3. Close the tube and incubate for 10 minutes at room temperature.
4. Briefly vortex the tube and then do a quick spin (less than 5000xg) to concentrate the liquid at the bottom.
5. Store the suspended plasmid at -20°C. The DNA is stable for at least one year from date of shipping when stored at -20°C.

**RefSeq:** [NM\\_198990.3](#), [NP\\_945341.2](#)

**RefSeq Size:** 5062 bp

**RefSeq ORF:** 1182 bp

**Locus ID:** 222236

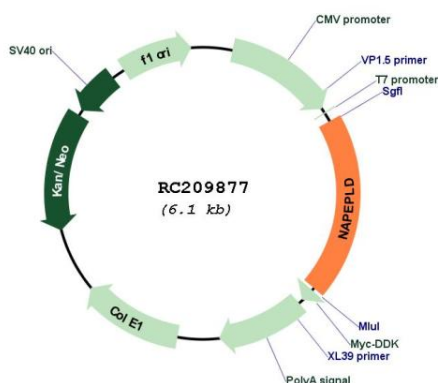
**UniProt ID:** [Q6IQ20](#)

**Cytogenetics:** 7q22.1

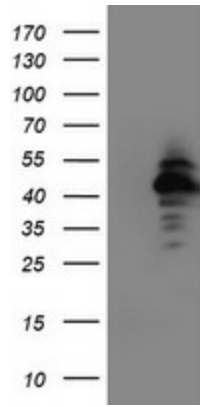
**MW:** 45.6 kDa

**Gene Summary:** NAPEPLD is a phospholipase D type enzyme that catalyzes the release of N-acylethanolamine (NAE) from N-acyl-phosphatidylethanolamine (NAPE) in the second step of the biosynthesis of N-acylethanolamine (Okamoto et al., 2004 [PubMed 14634025]).[supplied by OMIM, Oct 2008]

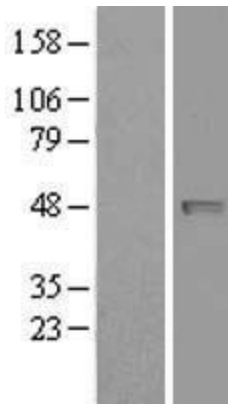
### Product images:



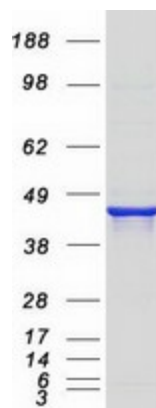
Circular map for RC209877



HEK293T cells were transfected with the pCMV6-ENTRY control (Cat# [PS100001], Left lane) or pCMV6-ENTRY NAPEPLD (Cat# RC209877, Right lane) cDNA for 48 hrs and lysed. Equivalent amounts of cell lysates (5 ug per lane) were separated by SDS-PAGE and immunoblotted with anti-NAPEPLD(Cat# [TA503860]). Positive lysates [LY404703] (100ug) and [LC404703] (20ug) can be purchased separately from OriGene.



Western blot validation of overexpression lysate (Cat# [LY426574]) using anti-DDK antibody (Cat# [TA50011-100]). Left: Cell lysates from untransfected HEK293T cells; Right: Cell lysates from HEK293T cells transfected with [RC225603] using transfection reagent MegaTran 2.0 (Cat# [TT210002]).



Coomassie blue staining of purified NAPEPLD protein (Cat# [TP309877]). The protein was produced from HEK293T cells transfected with NAPEPLD cDNA clone (Cat# RC209877) using MegaTran 2.0 (Cat# [TT210002]).