

Product datasheet for **RC209876**

C3orf25 (EFCAB12) (NM_207307) Human Tagged ORF Clone

Product data:

Product Type:	Expression Plasmids
Product Name:	C3orf25 (EFCAB12) (NM_207307) Human Tagged ORF Clone
Tag:	Myc-DDK
Symbol:	C3orf25
Synonyms:	C3orf25
Mammalian Cell Selection:	Neomycin
Vector:	pCMV6-Entry (PS100001)
E. coli Selection:	Kanamycin (25 ug/mL)



[View online »](#)

ORF Nucleotide Sequence:

>RC209876 ORF sequence
 Red=Cloning site Blue=ORF Green=Tags(s)

TTTTGTAATACGACTCACTATAGGGCGGCCGGAATTCGTCGACTGGATCCGGTACCGAGGAGATCTGCC
 GCC**CGGATCGCC**

ATGGACGACGACTATGAAGCGTACCACAGTCTGTTCTTGTGCTGCTCGACTCTGCCCGTCTAAGACTC
 CCATCAATGAAAATGCTCCCGTCTTTGATCCTGAACCGGTCATTGCCACTGCTTCAAGCAGTTCCAGCA
 GAAGGACTTCCGCCTGCCTCAGACCCGCGCGCAATCATCATGGTGCCTCGCAAGGAGGATCAGACACCC
 CTTAATCTGCATCCCAACCTCAGGCTCCCCAAAGCCATCCCCAGTTCAAAGTTCTGGAAGCTAGAG
 ATATCCAAGAGCAGCCAGAGGACAGGAAGACCTGGCTGAGCCAGAGGTCGAAGCTGCGGCAGGAGCTAGA
 GTCCTTTGGTGTGTAAGAGGTGGCTGGAGAACAAGCCAGCATCACGCCTTCAGAGGCCAAGGTCTTA
 CACATGATCCACGAGGAGCAGAGTGCCAGCCAAATGCCTCCAGGCACTACCAGGACCACCAGGAAGA
 AAGCCCCAGGCTCTCCGGCTGTCCGCCAGATGGTCCCCAGCTCCAGCTGCCGAGCCCCCTGCCCT
 GTCGGTCACTGACTCCTACCTGCATAGCCGAAGATCAAGATCCTGGAGATATTTACAAGTGGGCCAG
 GGTGAGAACAGAGAATCACCAGGGAGGAGTTCATCGCGCTGTAAGGCAGTCGGAGTCCCTCTGAAGA
 ACCAAGAGGTGGAGGATATAGTATCTACCTCAGCTCTTTGGGAAGCACAACACCATCACCATGGATAT
 CCTGGCCAATACCTACAAGCAGTGGTCTATGGCTCAGCAAAGGAGCAGCCTGGCCACTGCAAGGGAGCAT
 TATATCTTGGCCAAGCACAGAGATTCCTGAAGGGTCCGCTCAAGAAGCAGGAGGTGGATTCAGCCCCAC
 AGCTTCCCAAAGTGGACCTACTGACGGTGCCTGCAGTCGACACGCAGATGGAGACGCGGCCCATGACCT
 GGAGGAGATGGAGGAAGTGGCAAGCGGTACCGCAGCGGCAGCGACAGCACAAGCTCACGATCCCTCC
 ATCCAGTACACGGAGCAATGTCACCTGGTGCCTGTGGGAATCGGCACCTTGTGAGCAGTGCCTCCCGT
 CCACCATCCACGGGGATATGAGGGAGCTATTGACTCGGCCCGCAGGCACAACCTTCTGGTCTACCTGCA
 ATGCTGGAAGCTCTGTAAGTCTATGGCTCCCGCTGACAGAGGACATCCTCATGAAAGCCTTGTGTAC
 CCAGGAGACAAGATCATTTTCCAGATGGACAAAGTGTGCCCATCCGGCAGCCGGGAGGCTACTACTCTG
 ACTGGAAGGTCTTTTCTCCGAATCTGGCTCTGCTCCGGTCCCAGGGCCCTGGCAAGTCTAAGAGGACTGA
 CAAGAAAACGCCAAAGAAAAGCAAGAAAATGCGCTTTAAGGAGTTTGAGGAATTTACCAGGAAGCTGAAG
 GTGAAGAGGTCCAGTGGTCTGCAGCAAACACCCCAATTCCTTCTGGCCGGGTCACTTCTGGATAAGC
 TGCAGCTCTACCTGCCACTGTGGCCACAGACCGGAGCCTGGCGCTTTCAGTTGTGTTCAACACCAGCC
 CCATGTCTACCCAGCCACCTACCACCCTGACCACTGGTGGCCCTTAGGAACAAGAACTACATGACCCAC
 GCCATTATGATGCCGCCAAGGTGTACTACATCAAC

ACGCGTACGCGGCCGCTCGAGCAGAACTCATCTCAGAAGAGGATCTGGCAGCAAATGATATCCTGGATT
 ACAAGGATGACGACGATAAGGTTTAA

Protein Sequence:

>RC209876 protein sequence
 Red=Cloning site Green=Tags(s)

MDDDYEAYHSLFLSLLGLCPSTPINENAPVFDPEPVI AHC FKQFQKDFRLPQTRRRIIMVPRKEDQTP
 LNPASQPQAPPKIPSFVLEARDIQEQPEDRKTWLSQRSKLRQELESFGDVKRWLENKPSITPSEAKVL
 HMIHEEQSAQPNASQATTRTRKKAPRLSRLSRQMVPQLQLPEPPAL SVMYSYLHSRKIKILEIFHKVQG
 GENQRITREEFIAAVKAVGVPLKNQEVEDIVIYLSLKGKHNITMDILANTYKQWSMAQQRSSLATAREH
 YILAKHRDSLKGPLKKQEVDSAPQLPKVDLLTVPVDTQMETRPMLEEMEEVGVKRYRERQRQHLTIPS
 IQYTEQCHLVRCGNRHFDEHCLPSTIHGDMRELIDSARRHNFLVYLQCWKLCKSYGLPLTEDILMKALLY
 PGDKIIFQMDKVCPIRQPGGYSDWKVFSPLALLRSQGP GKSKRTDKKTPKSKKMRFEFEFTRKLL
 VKRSSLQQTHPNSFWPGLLDKLLQLYLPVATDRSLALFSCVQHQP HVYPATYHPDHWPLRNKNYMT
 AHYDAAKYYYIN

TRTRPLEQKLI SEEDLAANDILDYKDDDDKV

Chromatograms:

https://cdn.origene.com/chromatograms/mk6510_b08.zip

Restriction Sites:

Sgfl-Mlul

Cloning Scheme:


ACCN: NM_207307

ORF Size: 1716 bp

OTI Disclaimer: The molecular sequence of this clone aligns with the gene accession number as a point of reference only. However, individual transcript sequences of the same gene can differ through naturally occurring variations (e.g. polymorphisms), each with its own valid existence. This clone is substantially in agreement with the reference, but a complete review of all prevailing variants is recommended prior to use. [More info](#)

OTI Annotation: This clone was engineered to express the complete ORF with an expression tag. Expression varies depending on the nature of the gene.

Components: The ORF clone is ion-exchange column purified and shipped in a 2D barcoded Matrix tube containing 10ug of transfection-ready, dried plasmid DNA (reconstitute with 100 ul of water).

Reconstitution Method:

1. Centrifuge at 5,000xg for 5min.
2. Carefully open the tube and add 100ul of sterile water to dissolve the DNA.
3. Close the tube and incubate for 10 minutes at room temperature.
4. Briefly vortex the tube and then do a quick spin (less than 5000xg) to concentrate the liquid at the bottom.
5. Store the suspended plasmid at -20°C. The DNA is stable for at least one year from date of shipping when stored at -20°C.

RefSeq: [NM_207307.3](#)

RefSeq Size: 2169 bp

RefSeq ORF: 1719 bp

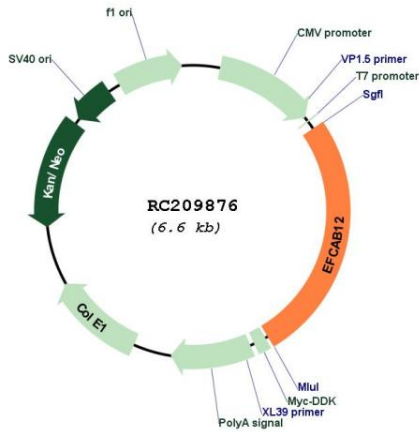
Locus ID: 90288

UniProt ID: [Q6NXP0](#)

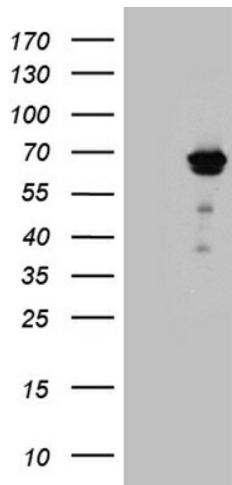
Cytogenetics: 3q21.3

MW: 66.6 kDa

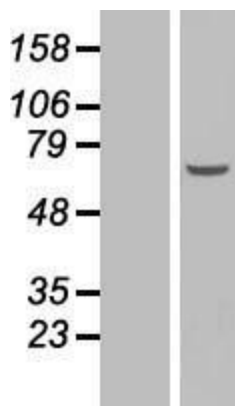
Product images:



Circular map for RC209876



HEK293T cells were transfected with the pCMV6-ENTRY control (Cat# [PS100001], Left lane) or pCMV6-ENTRY C3orf25 (Cat# RC209876, Right lane) cDNA for 48 hrs and lysed. Equivalent amounts of cell lysates (5 ug per lane) were separated by SDS-PAGE and immunoblotted with anti-C3orf25 antibody (Cat# [TA811971]). Positive lysates [LY404086] (100ug) and [LC404086] (20ug) can be purchased separately from OriGene.



Western blot validation of overexpression lysate (Cat# [LY404086]) using anti-DDK antibody (Cat# [TA50011-100]). Left: Cell lysates from untransfected HEK293T cells; Right: Cell lysates from HEK293T cells transfected with RC209876 using transfection reagent MegaTran 2.0 (Cat# [TT210002]).