

Product datasheet for **RC209873**

ZNF770 (NM_014106) Human Tagged ORF Clone

Product data:

Product Type:	Expression Plasmids
Product Name:	ZNF770 (NM_014106) Human Tagged ORF Clone
Tag:	Myc-DDK
Symbol:	ZNF770
Synonyms:	PRO1914
Mammalian Cell Selection:	Neomycin
Vector:	pCMV6-Entry (PS100001)
E. coli Selection:	Kanamycin (25 ug/mL)



[View online »](#)

ORF Nucleotide
Sequence:

>RC209873 ORF sequence
Red=Cloning site Blue=ORF Green=Tags(s)

TTTTGTAATACGACTCACTATAGGGCGGCCGGGAATTCGTCGACTGGATCCGGTACCGAGGAGATCTGCC
GCCGCGATCGCC

ATGATGGCTGAAAACAATTTAAAAATGCTAAAGATTCAACAGTGTGTGGTAGCCAACAACTACCTAGAA
ACAGGCCATATGTTTGAATATTTGTTTTAAGCACTTTGAAACACCATCAAAATTAGCTAGGCACTATCT
CATTCACTACTGGTCAAAAAGCCATTTGAATGTGATGTGTGCATAAAACCTTTAGACAACCTAGTTCATCTG
GAGAGGCATCAACTAAGTCACTAGTCTGCCTTTTAAATGTAGTATTTGTCAGCGTCACTTTAAAAATCTGA
AGACATTTGTGAAGCACCAACAACCTTACAATGAAACCTATCAGAATAATGTTAAACAGGTCAGAAGATT
GCTGGAGGCCAAGCAAGAAAAGTCAATGTATGGAGTGTATAACTTTTTACCACAGAGGAAAAGATGGGCA
TTACACCCGTGCTCTAAGTCTGATCCCATGTATAGCATGAAAAGAAGAAAGAATATTCATGCATGTACAA
TCTGTGGCAAGATGTTTCCATCACAGTCAAACTTGATAGGCATGTAATTCATACTGGTCAGAGGCC
TTTTAAATGTGTCTTGTGTACTAACTTTTTCGACAGTCAACTCACTTAAAAATCCCAACTTACACAT
TCAGAAGAAAGACCTTTTCAATGTTGTTTTGTCAAAAAGGATTTAAGATTCAAAGCAAACCTTCTGAAGC
ATAAACAATCCATACTAGGAATAAGGCTTTTCGGGCTCTTTTATTAAGAAGAGGCGTACAGAATCTCG
CCCCCTGCCTAATAAGTTAAATGCAAAATCAGGGTGGTTTTGAAAATGGTGAAGATTGGTGAATCTGAGGAG
AATAATCCACTTGATGTCCACTCAATTTATATTGTCCTTTTCAATGTCCAAAGTGTGAAAAGTGTTTTTG
AATCAGAGCAGATTCTCAATGAACACAGCTGTTTTGCTGCTAGAAGTGGCAAAATCCAAGCAGGTTCAA
AGAAGCTACAATAAAAACCTTGTAAAAAATCTTGGCCAAGCTTAAGCGTCTAGGAGTAAAAAA
TTAGATAACTTTCAATCTGAGAAAAAGTTTTTAAAAAGAGTTTCTTGAGAAATTGTGATCTTATTTCTG
GTGAGCAGAGCTCTGAACAAACCCAGAGAACATTTGTGGGTTCTTTGGCAAACATGGAACATATAAAAC
AATTGGCAATAGAAAGAAGAAAACATTGACTTTTGCCATTTTCTTGCAAAATATGGGAAAAAATTTGAAA
GGCATCCTTACGACAGAAAACATATTAAGCATTGATAATTCAGTGAATAAGAAAGACTTGTCAATCTGTG
GTTCAATCAGGTGAGGAATCTTTAATAACTGTGAGGTAATTCAGTGTGGTTTTTTCAGTTCCAAGGAAAA
CATACGTAAGACATAAGATATGTCCTTGTGACAAATGTGAGAAGGATTTTCTTCTATATCCAAACTA
AAAAGACACTATTTAATTCATACTGGACAGAGGCCCTTTGGCTGTAATTTTGTGGGAAATCTTTTAGAC
AGTCAGCTCACTTAAAAAGACATGAACAGACTCATAATGAAAAGAGTCTTATGCATCTCTTTGCCAAGT
AGAATTTGGAAACTTCAACAATCTTCTAATCATTGAGTAATAATGTTAACTATAATGCTTCCCAACAA
TGTCAGGCTCCTGGTGTCAAAAATACGAGGTCTCAGAGTCAGATCAAATGTCAGGAGTTAAGGCAGAGT
CACAGGATTTTATCCTGGTAGCACCGGCAACCTGTCTTCTAATGACTTTTGGAAATCAGAGCAAAG
CAATCCTTTTTGCAGTTATTCAGAGCATCAGGAGAAAAATGATGTCTTCTGTACCGATGCAGTGTTTGT
GCTAAAAGTTTCCGATCTCCATCTAAACTGAAAAGACACTACCTAATTCATGCAGGGCAGAAACCATTTG
AATGCTCAGTTTGTGGCAAAACATTCAGACAGGCTCCTCACTGGAAGAGACATCAGCTTACTCACTTTAA
AGAACGACCACAAGGAAAGTGGTTGCCTTAGATTTCGGTTATG

ACGCGTACGCGGCCGCTCGAGCAGAACTCATCTCAGAAGAGGATCTGGCAGCAAATGATATCCTGGATT
ACAAGGATGACGACGATAAGGTTTAA

Protein Sequence: >RC209873 protein sequence
Red=Cloning site Green=Tags(s)

MMAENNLKMLKIQQCVVANKLPRNRPYVCNICFKHFETPSKLARHYLIHTGQKPFECVCHKTFRQLVHL
 ERHQLTHSLPFKCSICQRHFKNLKTFFVKHQQLHNETYQNNVKQVRRLLLEAKQEKSVMGVYNTFTTEERWA
 LHPCSKSDPMYSMKRRKNIHACTICGKMFPSQSKLDRHVL IHTGQRPFKCVLCTKSFRQSTHLKIHQLTH
 SEERPFCQCFQKGFKIQSKLLKHKQIHTRNKAFRALLLKKRRTESRPLPNKLNANQGGFENGEIGESSEE
 NNPLDVHSIYIVPFQCPKCEKCFESEQILNEHSCFAARSGKIPSRFKRSYNYKTIIVKKILAKLKRARSKK
 LDNFQSEKKVFKSFLRNCDLISGESSEQTQRTFVGS LGKHGTYKTIGNRKKKTLTLPFSWQNMGNLKL
 GILTTENILSIDSVNKKDLISGSSGEEFFNCEVLQCGFSVPRENIRTRHKICPCDKCEKVFPISKL
 KRHYLIHTGQRPFGCNICGKSFQSAHLKRHEQTHNEKSPYASLCQVEFGNFNLSNHSGNNVNYNASQQ
 CQAPGVQKYEVSQDMSGVKAESQDFIPGSTGQPCLPNVLLSEQSNPFCSEYSEHQEKNDVFLYRCSVC
 AKSFRSPSKLERHYLIHAGQKPFECVCGKTRFQAPHWKRHQLTHFKERPQGVVALDSVM

TRTRPLEQKLISEEDLAANDILDYKDDDDKV

Chromatograms: https://cdn.origene.com/chromatograms/mk6545_e09.zip

Restriction Sites: SgfI-MluI

Cloning Scheme:



ACCN: NM_014106

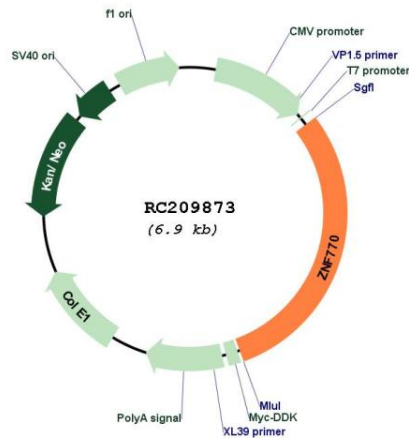
ORF Size: 2073 bp

OTI Disclaimer: The molecular sequence of this clone aligns with the gene accession number as a point of reference only. However, individual transcript sequences of the same gene can differ through naturally occurring variations (e.g. polymorphisms), each with its own valid existence. This clone is substantially in agreement with the reference, but a complete review of all prevailing variants is recommended prior to use. [More info](#)

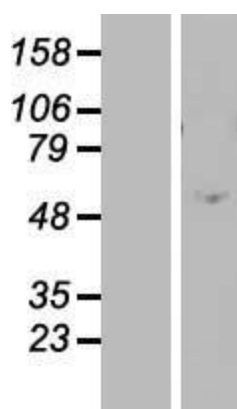
OTI Annotation: This clone was engineered to express the complete ORF with an expression tag. Expression varies depending on the nature of the gene.

- Components:** The ORF clone is ion-exchange column purified and shipped in a 2D barcoded Matrix tube containing 10ug of transfection-ready, dried plasmid DNA (reconstitute with 100 ul of water).
- Reconstitution Method:**
1. Centrifuge at 5,000xg for 5min.
 2. Carefully open the tube and add 100ul of sterile water to dissolve the DNA.
 3. Close the tube and incubate for 10 minutes at room temperature.
 4. Briefly vortex the tube and then do a quick spin (less than 5000xg) to concentrate the liquid at the bottom.
 5. Store the suspended plasmid at -20°C. The DNA is stable for at least one year from date of shipping when stored at -20°C.
- RefSeq:** [NM_014106.4](#)
- RefSeq Size:** 5453 bp
- RefSeq ORF:** 2076 bp
- Locus ID:** 54989
- UniProt ID:** [Q6IQ21](#)
- Cytogenetics:** 15q14
- MW:** 80 kDa
- Gene Summary:** May be involved in transcriptional regulation.[UniProtKB/Swiss-Prot Function]

Product images:



Circular map for RC209873



Western blot validation of overexpression lysate (Cat# [LY415482]) using anti-DDK antibody (Cat# [TA50011-100]). Left: Cell lysates from untransfected HEK293T cells; Right: Cell lysates from HEK293T cells transfected with RC209873 using transfection reagent MegaTran 2.0 (Cat# [TT210002]).