

## Product datasheet for RC209867

### C11orf87 (NM\_207645) Human Tagged ORF Clone

#### Product data:

Product Type:	Expression Plasmids
Product Name:	C11orf87 (NM_207645) Human Tagged ORF Clone
Tag:	Myc-DDK
Symbol:	C11orf87
Synonyms:	LOH11CR1A; NEURIM1
Mammalian Cell Selection:	Neomycin
Vector:	pCMV6-Entry (PS100001)
E. coli Selection:	Kanamycin (25 ug/mL)
ORF Nucleotide Sequence:	>RC209867 representing NM_207645 Red=Cloning site Blue=ORF Green=Tags(s)

TTTTGTAATACGACTCACTATAGGGCGGCCGGAATTCGTCGACTGGATCCGGTACCGAGGAGATCTGCC  
GCC**CGATCGCC**

ATGAGTGCCAGGGCGCCGAAGGAGCTGAGGCTGGCGTTGCCGCGTGTCTCCTCAACCGGACCTTTGCTT  
CCCCAACGCCAGCGGCAGCGGCAACACGGGTGCCGCGGCCAGGCGCAGTAGGCAGCGGCACCTGCAT  
CACGCAGGTGGGACAGCAGCTCTCCAGTCTTCTCCTCCAGCTGGTGTGATTGTCTGGTTACCGTC  
ATCTTCTGCCTCATCGTGTGTCCCTCTCCACTTCCACATCCACAAGCGTAGGATGAAGAAGCGGAAGA  
TGCAGAGGGCTCAGGAGGAATATGAGCGGGATCACTGCAGCGGCAGCCGGTGGCGGGGGCTGCCCG  
ACCTGGCAGGCAGGCCCAACCCAGCAAAGAAACCCGGCTGGAGAGGCAGCCCGGGACTCTCCCTTC  
TGCGCCCTTCCAACGCCTCGTGTGTCTCTTCTCGTCCCTGGCTCCCGTCCAGGGTCCCTGTGCTC  
CTCCGCTCCACCGCCAGCCTCCAGTCCCAAGGAGCACAGCAGCTTCTCCTGTTGGACACAGCTGG  
CGAGGGCCTTTTGCAAACGGTGGTACTGTCC

**ACGCGT**ACGCGGCCGCTCGAGCAGAACTCATCTCAGAAGAGGATCTGGCAGCAATGATATCCTGGATT  
ACAAGGATGACGACGATAAGGTTTAA

Protein Sequence:	>RC209867 representing NM_207645 Red=Cloning site Green=Tags(s)
-------------------	--

MSARAPKELRLALPPCLLNRTFASPNASGSGNTGARGPGAVGSGTCITQVGQQLFQSFSSSTLVILVLT  
IFCLIVLSLSTFHIHKRRMKRKMQRQAEEYERDHCSGSRGGGLPRPGRQAPTHAKETRLERQPRDSPF  
CAPSNASSLSSSSPGLPCQGPCAPPPPPASSPQGAHAASSCLDTAGEGLLQTVVLS

**TRTRPLEQKLI**SEEDLAANDILDYKDDDDKV

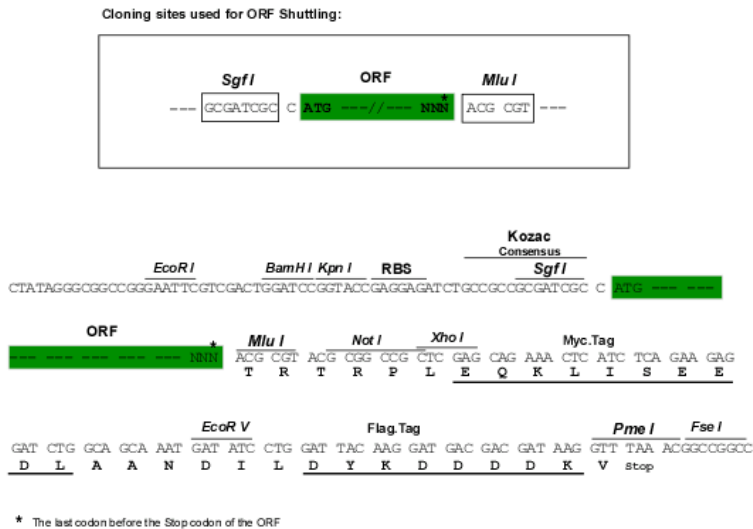


[View online »](#)

**Chromatograms:** [https://cdn.origene.com/chromatograms/ja1455\\_g11.zip](https://cdn.origene.com/chromatograms/ja1455_g11.zip)

**Restriction Sites:** SgfI-MluI

**Cloning Scheme:**



**ACCN:** NM\_207645

**ORF Size:** 591 bp

**OTI Disclaimer:** The molecular sequence of this clone aligns with the gene accession number as a point of reference only. However, individual transcript sequences of the same gene can differ through naturally occurring variations (e.g. polymorphisms), each with its own valid existence. This clone is substantially in agreement with the reference, but a complete review of all prevailing variants is recommended prior to use. [More info](#)

**OTI Annotation:** This clone was engineered to express the complete ORF with an expression tag. Expression varies depending on the nature of the gene.

**Components:** The ORF clone is ion-exchange column purified and shipped in a 2D barcoded Matrix tube containing 10ug of transfection-ready, dried plasmid DNA (reconstitute with 100 ul of water).

**Reconstitution Method:**

1. Centrifuge at 5,000xg for 5min.
2. Carefully open the tube and add 100ul of sterile water to dissolve the DNA.
3. Close the tube and incubate for 10 minutes at room temperature.
4. Briefly vortex the tube and then do a quick spin (less than 5000xg) to concentrate the liquid at the bottom.
5. Store the suspended plasmid at -20°C. The DNA is stable for at least one year from date of shipping when stored at -20°C.

**RefSeq:** [NM\\_207645.2](#)

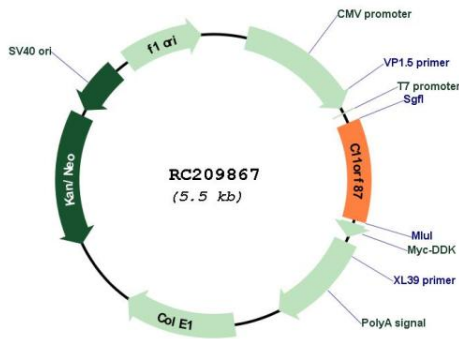
**RefSeq Size:** 2355 bp

**RefSeq ORF:** 594 bp

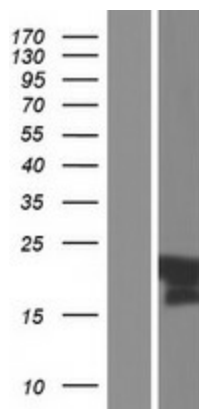
**Locus ID:** 399947

UniProt ID: [Q6NUJ2](#)  
 Cytogenetics: 11q22.3  
 Protein Families: Transmembrane  
 MW: 20.4 kDa

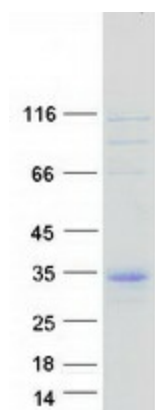
**Product images:**



Circular map for RC209867



Western blot validation of overexpression lysate (Cat# [LY403932]) using anti-DDK antibody (Cat# [TA50011-100]). Left: Cell lysates from untransfected HEK293T cells; Right: Cell lysates from HEK293T cells transfected with RC209867 using transfection reagent MegaTran 2.0 (Cat# [TT210002]).



Coomassie blue staining of purified C11orf87 protein (Cat# [TP309867]). The protein was produced from HEK293T cells transfected with C11orf87 cDNA clone (Cat# RC209867) using MegaTran 2.0 (Cat# [TT210002]).