

Product datasheet for RC209866

TSPYL6 (NM_001003937) Human Tagged ORF Clone

Product data:

Product Type:	Expression Plasmids
Product Name:	TSPYL6 (NM_001003937) Human Tagged ORF Clone
Tag:	Myc-DDK
Symbol:	TSPYL6
Mammalian Cell Selection:	Neomycin
Vector:	pCMV6-Entry (PS100001)
E. coli Selection:	Kanamycin (25 ug/mL)
ORF Nucleotide Sequence:	>RC209866 representing NM_001003937 Red=Cloning site Blue=ORF Green=Tags(s)

TTTTGTAATACGACTCACTATAGGGCGGCCGGGAATTCGTCGACTGGATCCGGTACCGAGGAGATCTGCCGCCCGATCGCC

ATGAGCCTCCCGGAGAGTCTCACAGCCCCGCTACTCTCGACTATGCTCTGGAAGACCCGCACCAGGGCC
AGAGGTCCCGAGAAAAGAGCAAGGCGACAGAGGTAATGGCAGATATGTTTGATGGCCGTTGGAGCCAAT
CGTGTTCACCCCGCCCGGCTTCCAGAGGAGGGGTCGCGCCCCAGGATCCCGCAGATGGTGGCCATACT
TTCCACATCTTGGTCGATGCGGGTCGCAGTCATGGAGCCATCAAAGCGGGGCAGGAAGTGACTCCACCAC
CCGCGGAGGGCCTAGAAGCGGCCCTCGCTCGCTGACAACGACGGCAGCCTCAAAAATGGCTTTCCGGG
TGAAGAGACGCACGGCCTAGGTGGGAGAAGGCTCTAGAAAACCTGTGGGGCAGGGAGGTCCGAGTCTGAA
GTGATTGCAGAGGGGAAGGCCGAGGACGTGAAGCCTGAGGAGTGTGCCATGTTCTCAGCCCCAGTGGATG
AGAAGCCAGGAGGCGAAGAAATGGACGTGGCGGAAGAAAACAGAGCAATAGATGAGGTAAACAGGGAGGC
AGGGCCTGGGCCCGGGCCCGGGCCCTGAACGTGGGTCTCCACCTGAACCCCTGGAGTCCATCCAGCTG
GAACTGGACTCCGTGAATGCAGAGGCTGACAGGGCGCTCCTGCAGGTGGAGCGCAGGTTTGGGCAGATTC
ATGAATACTACCTGGAGCAGAGGAATGACATCATTGCAATATCCCGGGCTTCTGGGTCACTGCTTTCCG
CCACCACCACAGCTGTCTGCCATGATTAGAGGCAAGATGCCGAGATGTTAAGCTACTTAACCAATTTG
GAAGTGAAGGAGCTCAGACACCCTAGGACAGGCTGCAAGTTTAAGTTCTCTTTCAAAGAAACCCCTACT
TCAGAAAACAAGCTGATTGTAAGGTGTATGAGGTGAGTCCCTTCGGCCAAGTGGTGTCTTTTCCACTCT
AATCATGTGGCGCCGGGCCATGGACCCAGTCTTCATTCATAGGAACCGACATGTCATCTGCAGCTTC
TTCACCTGGTTTTTCAGACCACAGCCTTCCAGAGTCCGACAGGATTGCTCAGATTATTAAGAGGACCTCT
GGTCAAACTCCACTGCAGTACTACCTGTTGGGTGAAGACGCCCATAGAGCTAGACGTGCCTGGTAAGGGA
GCCAGTGGAGATCCCCAGGCCCTTTGGGTTCCAGTGTGGT

ACGCGTACGCGGGCGCTCGAGCAGAACTCATCTCAGAAGAGGATCTGGCAGCAATGATATCCTGGATT
ACAAGGATGACGACGATAAGGTTTAA



Protein Sequence: >RC209866 representing NM_001003937
Red=Cloning site Green=Tags(s)

MSLPESPHSPATLDYALEDPHQQRSREKSKATEVMADMFDGRLEPIVFPPLPEEGVAPQDPADGGHT
 FHILVDAGRSHGAIKAGQEVTPPPAEGLEAASASLTTDGSLKNGFPGEETHGLGGEKALETGAGRSESE
 VIAEGKAEDVKPEECAMF SAPVDEKPGGEEMDVAEENRAIDEVNREAGPGPGPLNVGLHNPLESIQLE
 ELDSVNAEADRALLQVERRFGQIHEYYLEQRNDIIRNIPGFVWTAFRHHPQLSAMIRGQDAEMLS YLTNL
 EVKELRHPRTGCKFKFFQFNPNYFRNKLIYKVEVRSFGQVVSFSTLIMWRRRGHGQSF IHRNRHVICSF
 FTWFS DHSLPESDRIAQIIKEDLWSNPLQYLLGEDAHRARRRLVREPVEIPRPFQCG

TRTRPLEQKLISEEDLAANDILDYKDDDDKV

Chromatograms: https://cdn.origene.com/chromatograms/mk8104_b11.zip

Restriction Sites: SgfI-MluI

Cloning Scheme:

Cloning sites used for ORF Shuttling:



* The last codon before the Stop codon of the ORF

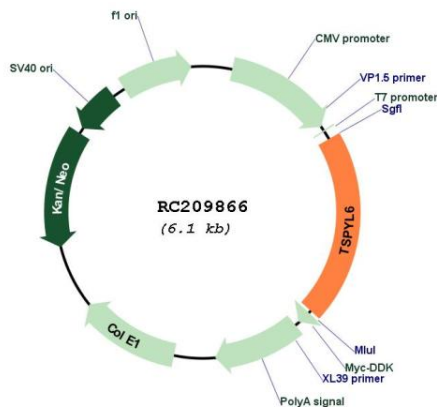
ACCN: NM_001003937

ORF Size: 1230 bp

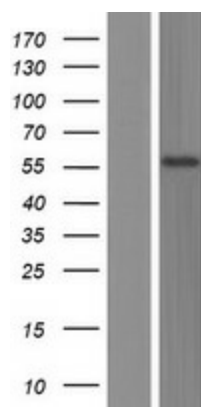
OTI Disclaimer: Due to the inherent nature of this plasmid, standard methods to replicate additional amounts of DNA in E. coli are highly likely to result in mutations and/or rearrangements. Therefore, OriGene does not guarantee the capability to replicate this plasmid DNA. Additional amounts of DNA can be purchased from OriGene with batch-specific, full-sequence verification at a reduced cost. Please contact our customer care team at custsupport@origene.com or by calling 301.340.3188 option 3 for pricing and delivery.

The molecular sequence of this clone aligns with the gene accession number as a point of reference only. However, individual transcript sequences of the same gene can differ through naturally occurring variations (e.g. polymorphisms), each with its own valid existence. This clone is substantially in agreement with the reference, but a complete review of all prevailing variants is recommended prior to use. [More info](#)

OTI Annotation:	This clone was engineered to express the complete ORF with an expression tag. Expression varies depending on the nature of the gene.
Components:	The ORF clone is ion-exchange column purified and shipped in a 2D barcoded Matrix tube containing 10ug of transfection-ready, dried plasmid DNA (reconstitute with 100 ul of water).
Reconstitution Method:	<ol style="list-style-type: none"> 1. Centrifuge at 5,000xg for 5min. 2. Carefully open the tube and add 100ul of sterile water to dissolve the DNA. 3. Close the tube and incubate for 10 minutes at room temperature. 4. Briefly vortex the tube and then do a quick spin (less than 5000xg) to concentrate the liquid at the bottom. 5. Store the suspended plasmid at -20°C. The DNA is stable for at least one year from date of shipping when stored at -20°C.
RefSeq:	<u>NM_001003937.3</u>
RefSeq Size:	3095 bp
RefSeq ORF:	1233 bp
Locus ID:	388951
UniProt ID:	<u>Q8N831</u>
Cytogenetics:	2p16.2
MW:	45.9 kDa

Product images:


Circular map for RC209866



Western blot validation of overexpression lysate (Cat# [LY424038]) using anti-DDK antibody (Cat# [TA50011-100]). Left: Cell lysates from untransfected HEK293T cells; Right: Cell lysates from HEK293T cells transfected with RC209866 using transfection reagent MegaTran 2.0 (Cat# [TT210002]).