

Product datasheet for **RC209865**

SLITL2 (VASN) (NM_138440) Human Tagged ORF Clone

Product data:

Product Type:	Expression Plasmids
Product Name:	SLITL2 (VASN) (NM_138440) Human Tagged ORF Clone
Tag:	Myc-DDK
Symbol:	SLITL2
Synonyms:	SLITL2
Mammalian Cell Selection:	Neomycin
Vector:	pCMV6-Entry (PS100001)
E. coli Selection:	Kanamycin (25 ug/mL)



[View online »](#)

ORF Nucleotide Sequence:

>RC209865 ORF sequence
 Red=Cloning site Blue=ORF Green=Tags(s)

TTTTGTAATACGACTCACTATAGGGCGGCCGGGAATTCGTCGACTGGATCCGGTACCGAGGAGATCTGCC
 GCC**GCGATCGCC**

ATGTGCTCCAGGGTCCCTCTGCTGCTGCCGCTGCTCCTGCTACTGGCCCTGGGGCTGGGGTGCAGGGCT
 GCCCATCCGGCTGCCAGTGCAGCCAGCCACAGACAGTCTTCTGCACTGCCGCCAGGGGACCACGGTGCC
 CCGAGACGTGCCACCCGACACGGTGGGGCTGTACGTCTTTGAGAACGGCATCACCATGCTCGACGCAGGC
 AGCTTTGCCGGCCTGCCGGGCTGCAGCTCCTGGACCTGTACAGAACAGATCGCCAGCCTGCCACGC
 GGGTCTTCCAGCCACTCGCAACCTCAGCAACCTGGACCTGACGGCCAACAGGCTGCATGAAATCACCAA
 TGAGACCTTCCGTGGCCTGCGGCGCCTCGAGCGCCTCTACCTGGGCAAGAACCGCATCCGCCACATCCAG
 CCTGGTGCCTTCGACACGCTCGACCGCCTCCTGGAGCTCAAGCTGCAGGACAACGAGCTGCGGGCACTGC
 CCCCCTGCGCCTGCCCCGCTGCTGCTGCTGGACCTCAGCCACAACAGCCTCCTGGCCCTGGAGCCCGG
 CATCCTGGACACTGCCAACGTGGAGGCGCTGCGGCTGGTGGTCTGGGGTGCAGCAGCTGGACGAGGGG
 CTCTTCAGCCGCTTGCGCAACCTCCACGACCTGGATGTGTCCGACAACAGCTGGAGCGAGTGCCACCTG
 TGATCCGAGGCTCCGGGGCTGACGCGCCTGCGGCTGGCCGGCAACACCCGATTGCCAGCTGCGGCC
 CGAGGACCTGGCCGGCCTGGCTGCCCTGCAGGAGCTGGATGTGAGCAACCTAAGCCTGCAGGCCCTGCCT
 GGGACCTCTCGGGCCTTCCCCCGCCTGCGGCTGCTGGCAGCTGCCCGCAACCCTTCAACTGCGTGT
 GCCCCTGAGCTGGTTTGGCCCTGGGTGCGCGAGAGCCACGTACACTGGCCAGCCCTGAGGAGACGCG
 CTGCCACTTCCGCCCAAGAAGCTGGCCGGCTGCTCCTGGAGCTTGACTACGCCGACTTTGGCTGCCCA
 GCCACCACCACACAGCCACAGTGGCCACCAGGAGCCGCTGGTGCAGGAGCCACAGCCTTGTCTTCTA
 GCTTGGCTCCTACCTGGCTTAGCCCCACAGCGCCGGCCACTGAGGCCCCAGCCGCCCTCCACTGCCCC
 ACCGACTGTAGGGCCTGTCCCCAGCCCCAGGACTGCCACCGTCCACCTGCCTCAATGGGGGCACATGC
 CACCTGGGGACACGGCACCACTGGCGTCTTGTGCCCGAAGGCTTACGGGCCTGTACTGTGAGAGCC
 AGATGGGGCAGGGGACACGGCCAGCCCTACACCAGTACGCGGAGGCCACCACGGTCCCTGACCCTGGG
 CATCGAGCCGGTGAAGCCACCTCCCTGCGCGTGGGGCTGCAGCGCTACCTCCAGGGGAGCTCCGTGCA
 CTCAGGAGCCTCCGTCTCACCTATCGCAACCTATCGGGCCCTGATAAGCGGCTGGTACGCTGCGACTGC
 CTGCTCGCTCGTGTGAGTACACGGTACCCAGCTGCGGCCAACGCCACTTACTCCGTCTGTGCATGCC
 TTTGGGGCCGGGCGGTGCCGGAGGGCGAGGAGCCTGCGGGGAGGCCATAACCCCCAGCCGCTCCAC
 TCCAACACGCCAGTACCCAGGCCCGGAGGGCAACCTGCCGCTCCTCATTGCGCCCGCCTGGCCG
 CGGTGCTCCTGGCCGCGCTGGCTGCGGTGGGGGACGCTACTGTGTGCGGCGGGGCGGGCCATGGCAGC
 AGCGGCTCAGGACAAAGGGCAGGTGGGGCCAGGGGCTGGGCCCTGGAACCTGGAGGGAGTGAAGTCCCC
 TTGGAGCCAGGCCGAAGGCAACAGAGGGCGGTGGAGAGGCCCTGCCAGCGGGTCTGAGTGTGAGGTGC
 CACTCATGGGCTTCCAGGGCCTGGCCTCCAGTACCCCTCCACGCAAAGCCCTACATC

ACGCGTACGCGGGCCGCTCGAGCAGAACTCATCTCAGAAGAGGATCTGGCAGCAATGATATCCTGGATT
 ACAAGGATGACGACGATAAGGTTTAA

Protein Sequence: >RC209865 protein sequence
Red=Cloning site Green=Tags(s)

```
MCSRVP L L L L L L L L L L L L A L G P G V Q G C P S G C Q C S Q P Q T V F C T A R Q G T T V P R D V P P D T V G L Y V F E N G I T M L D A G
S F A G L P G L Q L L D L S Q N Q I A S L P S G V F Q P L A N L S N L D L T A N R L H E I T N E T F R G L R R L E R L Y L G K N R I R H I Q
P G A F D T L D R L L E L K L Q D N E L R A L P P L R L P R L L L D L S H N S L L A L E P G I L D T A N V E A L R L A G L G L Q L D E G
L F S R L R N L H D L D V S D N Q L E R V P P V I R G L R G L T R L R L A G N T R I A Q L R P E D L A G L A A L Q E L D V S N L S L Q A L P
G D L S G L F P R L R L L A A A R N P F N C V C P L S W F G P W V R E S H V T L A S P E E T R C H F P P K N A G R L L L E L D Y A D F G C P
A T T T T A T V P T T R P V V R E P T A L S S S L A P T W L S P T A P A T E A P S P P S T A P P T V G P V P Q P Q D C P P S T C L N G G T C
H L G T R H H L A C L C P E G F T G L Y C E S Q M G Q G T R P S P T P V T P R P P R S L T L G I E P V S P T S L R V G L Q R Y L Q G S S V Q
L R S L R L T Y R N L S G P D K R L V T L R L P A S L A E Y T V T Q L R P N A T Y S V C V M P L G P G R V P E G E E A C G E A H T P P A V H
S N H A P V T Q A R E G N L P L L I A P A L A A V L L A A L A A V G A A Y C V R R G R A M A A A A Q D K G V G P G A G P L E L E G V K V P
L E P G P K A T E G G E A L P S G S E C E V P L M G F P G P L Q S P L H A K P Y I
```

TRTRPLEQKLISEEDLAANDILDYKDDDDKV

Chromatograms: https://cdn.origene.com/chromatograms/mk6814_b07.zip

Restriction Sites: SgfI-MluI

Cloning Scheme:



ACCN: NM_138440

ORF Size: 2019 bp

OTI Disclaimer: Due to the inherent nature of this plasmid, standard methods to replicate additional amounts of DNA in E. coli are highly likely to result in mutations and/or rearrangements. Therefore, OriGene does not guarantee the capability to replicate this plasmid DNA. Additional amounts of DNA can be purchased from OriGene with batch-specific, full-sequence verification at a reduced cost. Please contact our customer care team at custsupport@origene.com or by calling 301.340.3188 option 3 for pricing and delivery.

The molecular sequence of this clone aligns with the gene accession number as a point of reference only. However, individual transcript sequences of the same gene can differ through naturally occurring variations (e.g. polymorphisms), each with its own valid existence. This clone is substantially in agreement with the reference, but a complete review of all prevailing variants is recommended prior to use. [More info](#)

OTI Annotation: This clone was engineered to express the complete ORF with an expression tag. Expression varies depending on the nature of the gene.

Components: The ORF clone is ion-exchange column purified and shipped in a 2D barcoded Matrix tube containing 10ug of transfection-ready, dried plasmid DNA (reconstitute with 100 ul of water).

Reconstitution Method:

1. Centrifuge at 5,000xg for 5min.
2. Carefully open the tube and add 100ul of sterile water to dissolve the DNA.
3. Close the tube and incubate for 10 minutes at room temperature.
4. Briefly vortex the tube and then do a quick spin (less than 5000xg) to concentrate the liquid at the bottom.
5. Store the suspended plasmid at -20°C. The DNA is stable for at least one year from date of shipping when stored at -20°C.

RefSeq: [NM_138440.1](#), [NP_612449.1](#)

RefSeq Size: 2864 bp

RefSeq ORF: 2022 bp

Locus ID: 114990

UniProt ID: [Q6EMK4](#)

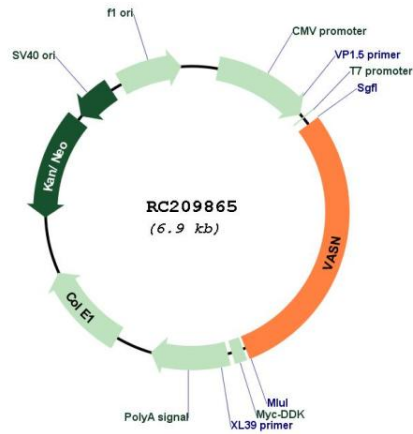
Cytogenetics: 16p13.3

Protein Families: Secreted Protein, Transmembrane

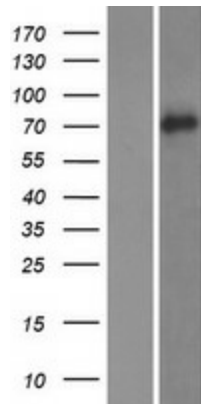
MW: 71.7 kDa

Gene Summary: May act as an inhibitor of TGF-beta signaling.[UniProtKB/Swiss-Prot Function]

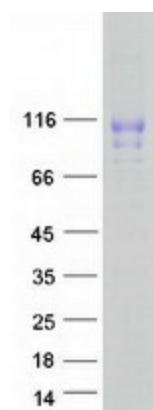
Product images:



Circular map for RC209865



Western blot validation of overexpression lysate (Cat# [LY408694]) using anti-DDK antibody (Cat# [TA50011-100]). Left: Cell lysates from untransfected HEK293T cells; Right: Cell lysates from HEK293T cells transfected with RC209865 using transfection reagent MegaTran 2.0 (Cat# [TT210002]).



Coomassie blue staining of purified VASN protein (Cat# [TP309865]). The protein was produced from HEK293T cells transfected with VASN cDNA clone (Cat# RC209865) using MegaTran 2.0 (Cat# [TT210002]).