

## Product datasheet for **RC209863**

### PWWP domain containing protein 2B (PWWP2B) (NM\_138499) Human Tagged ORF Clone

#### Product data:

Product Type:	Expression Plasmids
Product Name:	PWWP domain containing protein 2B (PWWP2B) (NM_138499) Human Tagged ORF Clone
Tag:	Myc-DDK
Symbol:	PWWP domain containing protein 2B
Synonyms:	bA432J24.1; pp8607; PWWP2
Mammalian Cell Selection:	Neomycin
Vector:	pCMV6-Entry (PS100001)
E. coli Selection:	Kanamycin (25 ug/mL)



[View online »](#)

**ORF Nucleotide Sequence:**

>RC209863 ORF sequence  
 Red=Cloning site Blue=ORF Green=Tags(s)

TTTTGTAATACGACTCACTATAGGGCGGCCGGAATTCGTCGACTGGATCCGGTACCGAGGAGATCTGCC  
 GCC**CGCATCGCC**

ATGCAGCTGGGGTCCAGCTCCCCCTCCTGCCTGCGGGTTCAGCCCCGAGACCACCGCCCCGAGC  
 CACCCCCGCCCTCGTGCCGCGCTGCCGCGGAAGCCTGCCCCGTACCCTCCCTACTTCGAAGGCGC  
 CCCCTTCCTCACCCGCTGTGGCTCCGGGACACGTACAAGCTGTGGGTGCCCCAGCCGCCCCAGGACC  
 ATCAAGCGCACGCGGGCGGCTGTCCCACAACCGGACCCGGGGCGCTCATCCTCAGCACCATCCGCC  
 TGCGGCCGCGCCAGGTGCTCTGTGAGAAGTGCAAGAGCACGCTGAGCCCCCGGAGGCCAGCCCCGACC  
 CCCAGCCGCGCCAGGGCCCGCAGGAGGCTGGGCAGCGGCCGGACAGGGAGCTCCGCAAGCCGGAGGAG  
 CCGGAGAACGCGGAGCCACGGCTGCGGCCACCGCAGGAGGAGCAAGAGGGAGAGGCGCAGGAGGACA  
 GGGCCCCGGCAGAGCAGGTCCCAGGAGCCGGTCAAGATCTCTACAGCACCCCCAGGGCAAGGG  
 AGAGGTGGTCAAGATCCCCTCCCGCTGCACGGCTCTCTGGAGCCCTTCGTCCCAGCAGGCCCGCAG  
 GACGACGGCAGCCAGGACCCGAGGTGCTGGACAGAGAGTCCCGGACCGGCCGTCTGCGCGCCCTCGG  
 CCTCCATCCCCAAGTTGAAACTGACACGGCCTGTGCCGGCCGGCGCGACCTGCCGCCCCCTAAGATCCG  
 CCTGAAGCCCCACCGTCTGGGGACAGCAGCAGCAGCCCGTGTACCGGGCCGAGCTGGTGGGGAGCTG  
 AACGGGTACCTGCGGGACAGCTCGCCGGCGCCCTGTGCGGACGGCCCTGCCGGTGGGCTGGCGGACTTGT  
 CTTCTGGAAGTTCGGGTGAGGACGATGACTTCAAGAGCTGTCCCCAGGGTCCACAGGGACGCGAGGGCTT  
 GGCTTTTCTCGTACGCTGCCCTGAGGGGAGAGCGGACTGTGCCAGTGAGTCGGCTGCAGCAGCGACAGC  
 CTGGACGAGGCCAGATCGTCCGGCTCGGAAGGGACCGCCGAGACACGGGTGACCTCTCGCTGGCCAGC  
 GCGCGTCAGCGCCCTCGGTGTCCAGAGAGGCTCGCCAAACGGTCCGCCCCCTGACGGTCAAGTGCACAC  
 ACAGAGCGTGTCCGAGTGATCACGAGGACCGGACGACTGTGGCCGTGGGGGACATCGTCTGGGTAAAG  
 ATCCATGGTTTTCTTGGTGGCCGGCGCTGTTCTTGACATCAGTCTCGCCAGAAGGAGGACGGAGAGC  
 CGTCTTGGCGAGAAGCGAAGGTCTCGTGGTTTGGTTCTCCGACTACGTCGTTCTTGTCTATTTCAA  
 ACTCTCCCCTTCTGAATTTTCAAAGTGAATTAATCGTAAGAAGAAGGGGATGTATCGGAAAGCTATA  
 ACCGAGGTGCAAATGCCCAAGACACGTGCCCCGGAATCAGGGAGCTCTAACCCAGTTTGAAGC

**ACGCGT**ACGCGGCCGCTCGAGCAGAACTCATCTCAGAAGAGGATCTGGCAGCAAATGATATCTGGATT  
 ACAAGGATGACGACGATAAGGTTTAA

**Protein Sequence:**

>RC209863 protein sequence  
 Red=Cloning site Green=Tags(s)

MLQGSSSPPACGVQPPETTGPPEPPPLVPPLPAGSLPPYPPYFEGAPFPHPLWLRDYLKLVWPQPPPT  
 IKRTRRRRLSRNRDPGRLLSTIRLRPRQVLCEKCKSTLSPPEASPGPPAAPRRRRRLGSGPDRELKPEE  
 PENGEPTAAATARRSKRERREEDRAPAEQVPRSPVIKISYSTPQKGGEVVKIPSRVHGSLEPFRPQAPQ  
 DDGSQDPEVLDRSRDRPSCAPSASIPKLLKTRPVPAGADLPPPKIRLKPRLGDSEHEPVYRAELVGEL  
 NGYLRDSSPAPCADGPAGGLADLSSGSSGEDDDFKSCPQGPQGREGLAFLVSCPEGRADCASESACSSDS  
 LDEARSSGSEGTPADTGDLSPGHGASAPSVSREARQTVPPLTVRLHTQSVSECITEDGRTVAVGDIVWGK  
 IHGFPPWWPARVLDISLGQKEDGEPSWREAKVSWFGSPTTSFLSISKLSPFSEFFKLRFNKKGMYRKAI  
 TEAANAARHVAPEIRELLTQFET

**TRTRPLEQKLI**SEEDLAANDILDYKDDDDKV

**Chromatograms:**

[https://cdn.origene.com/chromatograms/mk6545\\_g11.zip](https://cdn.origene.com/chromatograms/mk6545_g11.zip)

**Restriction Sites:**

Sgfl-Mlul

**Cloning Scheme:**



**ACCN:** NM\_138499

**ORF Size:** 1539 bp

**OTI Disclaimer:** The molecular sequence of this clone aligns with the gene accession number as a point of reference only. However, individual transcript sequences of the same gene can differ through naturally occurring variations (e.g. polymorphisms), each with its own valid existence. This clone is substantially in agreement with the reference, but a complete review of all prevailing variants is recommended prior to use. [More info](#)

**OTI Annotation:** This clone was engineered to express the complete ORF with an expression tag. Expression varies depending on the nature of the gene.

**Components:** The ORF clone is ion-exchange column purified and shipped in a 2D barcoded Matrix tube containing 10ug of transfection-ready, dried plasmid DNA (reconstitute with 100 ul of water).

- Reconstitution Method:**
1. Centrifuge at 5,000xg for 5min.
  2. Carefully open the tube and add 100ul of sterile water to dissolve the DNA.
  3. Close the tube and incubate for 10 minutes at room temperature.
  4. Briefly vortex the tube and then do a quick spin (less than 5000xg) to concentrate the liquid at the bottom.
  5. Store the suspended plasmid at -20°C. The DNA is stable for at least one year from date of shipping when stored at -20°C.

**Note:** Plasmids are not sterile. For experiments where strict sterility is required, filtration with 0.22um filter is required.

**RefSeq:** [NM\\_138499.2](#), [NP\\_612508.2](#)

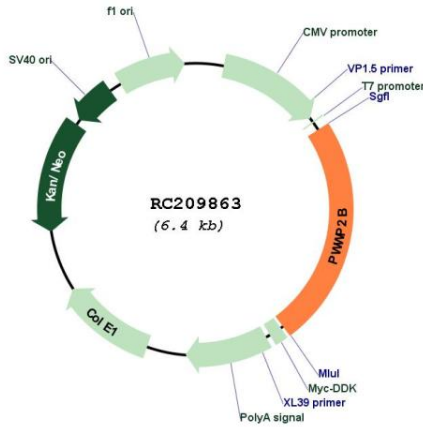
**RefSeq Size:** 2626 bp

**RefSeq ORF:** 1773 bp

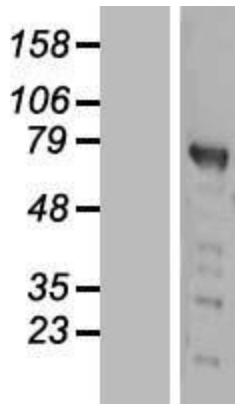
**Locus ID:** 170394

UniProt ID: [Q6NUJ5](#)  
 Cytogenetics: 10q26.3  
 MW: 55.7 kDa

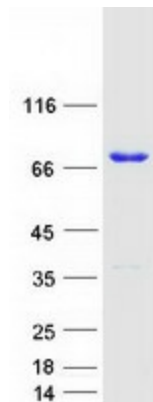
**Product images:**



Circular map for RC209863



Western blot validation of overexpression lysate (Cat# [LY408588]) using anti-DDK antibody (Cat# [TA50011-100]). Left: Cell lysates from untransfected HEK293T cells; Right: Cell lysates from HEK293T cells transfected with RC209863 using transfection reagent MegaTran 2.0 (Cat# [TT210002]).



Coomassie blue staining of purified PWWP2B protein (Cat# [TP309863]). The protein was produced from HEK293T cells transfected with PWWP2B cDNA clone (Cat# RC209863) using MegaTran 2.0 (Cat# [TT210002]).