

## Product datasheet for RC209862

### ANXA2R (NM\_001014279) Human Tagged ORF Clone

#### Product data:

**Product Type:** Expression Plasmids  
**Product Name:** ANXA2R (NM\_001014279) Human Tagged ORF Clone  
**Tag:** Myc-DDK  
**Symbol:** ANXA2R  
**Synonyms:** AX2R; AXIIR; C5orf39  
**Mammalian Cell Selection:** Neomycin  
**Vector:** pCMV6-Entry (PS100001)  
**E. coli Selection:** Kanamycin (25 ug/mL)  
**ORF Nucleotide Sequence:** >RC209862 ORF sequence  
 Red=Cloning site Blue=ORF Green=Tags(s)

TTTTGTAATACGACTCACTATAGGGCGGCCGGAATTCGTCGACTGGATCCGGTACCGAGGAGATCTGCC  
 GCC**CGATCGCC**

ATGGAGCAACATTTTCTTGGCTGTGTGAAGCGGGCTTGGGATCCGCAGAGGTGGCGCCAGAGCCCCAGC  
 CTCACCTATTGTGAGTTCAGAAGATCGTGGGCCGTGGCCTCTTCTTTGTATCCAGTACTAGGAGAGTA  
 CTCACTGGACAGCTGTGATTTGGACTGCTTCCAGCCCTTGCTGGCGGCTGCCCGGAGTCTACTGGCAA  
 AACGGACTCTCTCTGGAGTCCAGAGCACCTTGAACCAAGTACAGCGAAGCCCACTGAGTTCAGTTGGC  
 CGGGGACACAGAAGCAGCAAGAGGCACCCGTAGAAGAGGTGGGGCAGGCAGAGGAACCCGACAGACTCAG  
 GCTCCGGCAGCTTCCCTGGAGCAGTCTCTCCATCCCTGGGACAGACAGCAGGACACCGAGGTCTGTGAC  
 AGCGGGTGCCTTTTGAACGCCGCCATCCTCTGCCCTCCAGCCGTGGCGCCACCTCCCGGGTTTCTCAG  
 ACTGCCTGGAGTGGATTCTTCGCGTTGGTTTTGCCGCTTCTGTACTCTGGCGGTGCTGTTACACGGAT  
 CTGTGGAGCTAAGCAGCCT

**ACGCGT**ACGCGGCCGCTCGAGCAGAACTCATCTCAGAAGAGGATCTGGCAGCAAATGATATCCTGGATT  
 ACAAGGATGACGACGATAAGGTTTAA

**Protein Sequence:** >RC209862 protein sequence  
 Red=Cloning site Green=Tags(s)

MEQHFLGCVKRAWDSAEVAPEPQPPPIVSSDRGPWPLPLYPVLGEYSLDSCDLGLLSSPCWRLPGVYWQ  
 NGLSPGVQSTLEPSTAKPTEFSWPGTQKQEQEAPVEEVQAEEDRLRLRQLPWSSPLHPWDRQQDTEVCD  
 SGCLLERRHPPALQPWRHLPGFSDCLEWILRVGFAAFSVLWACCSRICGAKQP

**TRTRPLEQKLISEEDLAANDILDYKDDDDKV**



[View online »](#)

**Chromatograms:** [https://cdn.origene.com/chromatograms/mk6364\\_h10.zip](https://cdn.origene.com/chromatograms/mk6364_h10.zip)

**Restriction Sites:** SgfI-MluI

**Cloning Scheme:**



**ACCN:** NM\_001014279

**ORF Size:** 579 bp

**OTI Disclaimer:** The molecular sequence of this clone aligns with the gene accession number as a point of reference only. However, individual transcript sequences of the same gene can differ through naturally occurring variations (e.g. polymorphisms), each with its own valid existence. This clone is substantially in agreement with the reference, but a complete review of all prevailing variants is recommended prior to use. [More info](#)

**OTI Annotation:** This clone was engineered to express the complete ORF with an expression tag. Expression varies depending on the nature of the gene.

**Components:** The ORF clone is ion-exchange column purified and shipped in a 2D barcoded Matrix tube containing 10ug of transfection-ready, dried plasmid DNA (reconstitute with 100 ul of water).

**Reconstitution Method:**

1. Centrifuge at 5,000xg for 5min.
2. Carefully open the tube and add 100ul of sterile water to dissolve the DNA.
3. Close the tube and incubate for 10 minutes at room temperature.
4. Briefly vortex the tube and then do a quick spin (less than 5000xg) to concentrate the liquid at the bottom.
5. Store the suspended plasmid at -20°C. The DNA is stable for at least one year from date of shipping when stored at -20°C.

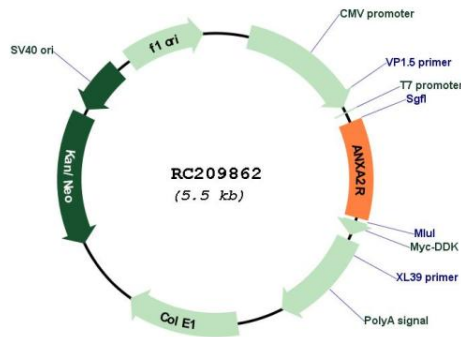
**RefSeq:** [NM\\_001014279.3](#)

**RefSeq Size:** 1280 bp

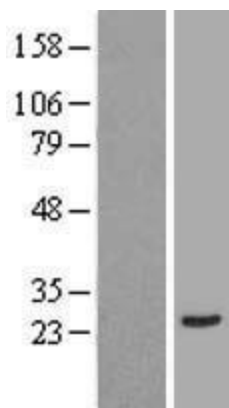
**RefSeq ORF:** 582 bp

**Locus ID:** 389289

**UniProt ID:** [Q3ZCQ2](#)  
**Cytogenetics:** 5p12  
**Protein Families:** Druggable Genome  
**MW:** 21.7 kDa  
**Gene Summary:** May act as a receptor for annexin II on marrow stromal cells to induce osteoclast formation. [UniProtKB/Swiss-Prot Function]

**Product images:**


Circular map for RC209862



Western blot validation of overexpression lysate (Cat# [LY423048]) using anti-DDK antibody (Cat# [TA50011-100]). Left: Cell lysates from untransfected HEK293T cells; Right: Cell lysates from HEK293T cells transfected with RC209862 using transfection reagent MegaTran 2.0 (Cat# [TT210002]).