

Product datasheet for **RC209857**

CPSF2 (NM_017437) Human Tagged ORF Clone

Product data:

Product Type:	Expression Plasmids
Product Name:	CPSF2 (NM_017437) Human Tagged ORF Clone
Tag:	Myc-DDK
Symbol:	CPSF2
Synonyms:	CPSF100
Mammalian Cell Selection:	Neomycin
Vector:	pCMV6-Entry (PS100001)
E. coli Selection:	Kanamycin (25 ug/mL)



[View online »](#)

**ORF Nucleotide
Sequence:**

>RC209857 ORF sequence
 Red=Cloning site Blue=ORF Green=Tags(s)

TTTTGTAATACGACTCACTATAGGGCGGCCGGAATTCGTCGACTGGATCCGGTACCGAGGAGATCTGCC
 GCC**CGCATCGCC**

ATGACGTCTATTACAAATTAACCTACCCTTTCTGGGGTCCAAGAAGAATCTGCCCTTTGCTATCTTCTCC
 AAGTTGATGAGTTTAGATTTTTATTGGACTGTGGCTGGGATGAGCACTTTTCTATGGATATTATTGATTC
 CCTGAGGAAGCATGTTCCACCAGATTGATGCAGTCTGTTGTCTACCCTGATCCTCTCCACCTTGGTGCC
 CTCCCGTATGCTGTCGAAAGTTGGGTCTGAACCTGTGCTATCTATGCAACCATTCTGTTATAAAATGG
 GACAGATGTTTATGATGATCTTTATCAGTCTCGACACAATACAGAAGATTTTACTACTCTTTACATTAGA
 TGATGTGGATGCAGCCTTTGATAAAATACAGCAGCTAAAATTCTCTCAGATTGTGAATTTGAAAGGTAAA
 GGACATGGCCTGTCTATCACACCTCTGCCAGCTGGTCATATGATAGGTGGAACAATATGGAAAATAGTCA
 AAGATGGAGAAGAAGAAATGTTTATGCAGTTGACTTCAACCACAAGAGGGAGATCCATTTAAATGGATG
 TTCCTGGAAATGCTAAGCAGGCCTTCCCTACTTATCACAGATTCATTCAATGCTACATATGTACAGCCT
 AGAAGAAAACAGAGAGATGAGCAGCTTCTGACAAATGTCCTGGAAACACTTCGAGGTGATGGAAATGTGT
 TAATAGCAGTGGACACAGCAGGCAGAGTTTTGGAACCTTGCTCAACTTCTTGATCAGATTTGGAGGACTAA
 AGATGCAGGATTGGGTGTTTACTCATTGGCACTCCTAAATAATGTGAGTTACAATGTGGTGGAGTTTTCT
 AAGTCCCAGGTAGAAATGGATGAGTGGTAAATGATGAGATGTTTTGAAGACAAAAGAAAATATCCGTTTC
 AGTTTCGCCATCTCTCTTTATGTCATGGTCTTTCTGACTTGGCCCGTGTACCTAGCCCTAAAGTTGACT
 TGCCAGCCAACCTGACCTGGAATGCGGATTTTCAAGGGATCTCTTTATTCAGTGGTGTGAGGACCCTAAA
 AACTCAATCATTCTAACCTACAGAACTACTCCTGGGACTTTAGCACGTTTCCTAATTGATAATCCTTCTG
 AAAAAATTACAGAAATAGAGTTGAGGAAACGTGTGAAGCTTGAAGGAAAGAAGTTGAAGAATACTTGA
 AAAAGAGAAACTAAAGAAAGAAGCTGCCAAAAAGCTTGAGCAGTCAAAGAGGCAGATATAGATTCCAGT
 GATGAGAGTGATATTGAGGAAGATATTGACCAGCCATCAGCTCATAAGACGAAGCATGACTTGATGATGA
 AAGGTGAAGGCAGTCGTAAGGAAGTTTTTTTCAAACAGGCAAAAAAGTCTATCCTATGTTTCTGCCCC
 AGAAGAAAGAATTAATGGGATGAATAAGGAGAGATTATCAAACAGAGGATTTCTTAGTGCCAGAGCTT
 CAAGCTACTGAAGAAGAAAAAGCAAATTAAGAACTGTTTGGACAAATGGAGATGAACCTATGGATCAGG
 ATTTATCTGATGTTCTACTAAATGTATTTCTACAACAGAGTCTATTGAAATAAAAGCCCGGTTACCTA
 CATAGACTATGAAGGACGCTCTGATGGGATTCATTAATAAATCATTAAATCAGATGAAACCACGACAG
 TTGATCATCGTCCATGGCCACCAGAGGCCAGTCAAGATCTGGCAGAGTGTGTGCGCCTTTGGTGGGA
 AAGATATTAAGTGTACATGCCAAAGCTACATGAAACAGTTGATGCCACTAGTGAAACTCACATCTACCA
 GGTGAGGTTAAAAGACTCACTTGTGAGCTCTTTCAGTTTTGTAAGGCAAAAGATGCTGAATTAGCTTGG
 ATAGATGGTGTCTTAGATATGAGAGTTTCAAAGTGGACACAGGGGTTATTTTAGAAGAAGGAGAACTAA
 GGGATGATGGAGAAGACTCAGAGATGCAAGTGGAAAGCTCCCTCAGATTCTAGCGTTATAGCACAACAAA
 GGCCATGAAAAGTTTGTTCGGAGATGATGAAAAAGAAACAGGTGAAGAAAGTGAAGATCATTCTACTTTG
 GAACCTTGCCACCTCATGAGGTTCTGGACATCAGTCAAGTTTTATGAATGAACCAAGGCTGTGAGACT
 TCAAGCAAGTTCTCTTACGGGAGGGAATCAAGCTGAATTTGATGAGGAGTACTTGTGTTGCAACAATCA
 AGTAGCAGTCCGCAGAACGGAAGCTGGACGATTGGATTAGAAGGCTGCCTTTGTCAAGATTTTTATAGG
 ATAAGAGACCTTTTATATGAACAATATGCCATTGTA

ACGCGTACGCGGCCGCTCGAGCAGAAACTCATCTCAGAAGAGGATCTGGCAGCAATGATATCCTGGATT
 ACAAGGATGACGACGATAAGGTTTAA

Protein Sequence: >RC209857 protein sequence
Red=Cloning site Green=Tags(s)

MTSIIKLTTL SGVQEE SALCYLLQVDEF RFLD DCGWDEHFSMDIIDSLRKHVHQIDAVLLSHPDPLHLGALPYAVGKLG LNCAIYATIPVYKMGQMFMYDLYQSRHNTE DFTLFTLDDVDAAFDKIQQLKFSQIVNLKGGHGLSITPLPAGHMIGGTIWKI VKDGEEI VYAVDFN HKREIHLNGCSLEMLSRPSLLITDSFNATYVQPRRKQRDEQLLTNVLETLRGDGNVLI AVDTAGRVLELAQLLDQIWRTKDAGLGVYSLALLNNVSYNVVEFSKSQVEWMSGKLMRCFEDKRNNPFQFRHLSLCHGLSDLARVPSPKVVLASQPDLECGFSRD LFIQWCQDPKNSIIILTYRTTPGTLARFLIDNPSEKITEIELRKRVKLEGKELEEYLEKEKLKKEAAKKLEQSKEADIDSSDESDIEEDIDQPSAHKTKHDLMMKGEGRKGSFFKQAKKSYPMFPAPEERIKWDEYGEI IKPEDFLVPELQATEEEKSKLESGLTNGDEPMDQDLSDVPTKCI STTESIEIKARV TYIDYEGRSDGDSIKKIINQMKPRQLIIVHGPPEASQDLAEC CRAFTGGKDIKVMPKLHETV DATSETHIYQVRLKDSL VSSLQFCKAKDAELAWIDGVLD MRVSKVD TGVI LEEGELRDDGEDSEM QVEAPSDSSVIAQQKAMKSLFGDDEKETGE ESEI IPTLEPLPHEVPGHQSVMNEPRLSDFKQVLLREGIQAEFVGGVLCNNQVAVRR TETGRIGLEGCLCQDFYRIRDLLYEQYAI V

TRTRPLEQKLISEEDLAANDILDYKDDDDKV

Chromatograms: https://cdn.origene.com/chromatograms/mk6230_d02.zip

Restriction Sites: Sgfl-Mlul

Cloning Scheme:



ACCN: NM_017437

ORF Size: 2346 bp

OTI Disclaimer: The molecular sequence of this clone aligns with the gene accession number as a point of reference only. However, individual transcript sequences of the same gene can differ through naturally occurring variations (e.g. polymorphisms), each with its own valid existence. This clone is substantially in agreement with the reference, but a complete review of all prevailing variants is recommended prior to use. [More info](#)

OTI Annotation: This clone was engineered to express the complete ORF with an expression tag. Expression varies depending on the nature of the gene.

Components: The ORF clone is ion-exchange column purified and shipped in a 2D barcoded Matrix tube containing 10ug of transfection-ready, dried plasmid DNA (reconstitute with 100 ul of water).

Reconstitution Method:

1. Centrifuge at 5,000xg for 5min.
2. Carefully open the tube and add 100ul of sterile water to dissolve the DNA.
3. Close the tube and incubate for 10 minutes at room temperature.
4. Briefly vortex the tube and then do a quick spin (less than 5000xg) to concentrate the liquid at the bottom.
5. Store the suspended plasmid at -20°C. The DNA is stable for at least one year from date of shipping when stored at -20°C.

Note: Plasmids are not sterile. For experiments where strict sterility is required, filtration with 0.22um filter is required.

RefSeq: [NM_017437.3](#)

RefSeq Size: 5072 bp

RefSeq ORF: 2349 bp

Locus ID: 53981

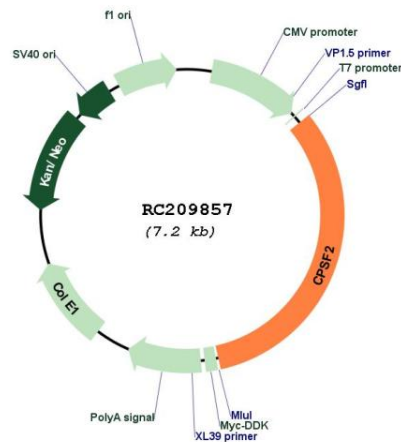
UniProt ID: [Q9P2I0](#)

Cytogenetics: 14q32.12

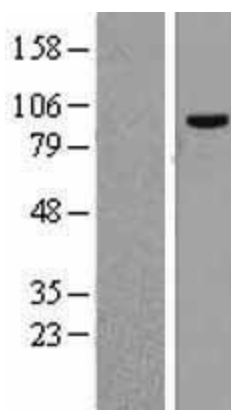
MW: 88.5 kDa

Gene Summary: Component of the cleavage and polyadenylation specificity factor (CPSF) complex that play a key role in pre-mRNA 3'-end formation, recognizing the AAUAAA signal sequence and interacting with poly(A) polymerase and other factors to bring about cleavage and poly(A) addition. Involved in the histone 3' end pre-mRNA processing.[UniProtKB/Swiss-Prot Function]

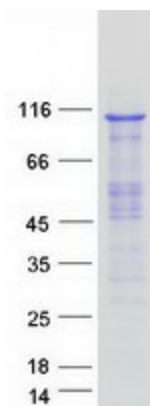
Product images:



Circular map for RC209857



Western blot validation of overexpression lysate (Cat# [LY413751]) using anti-DDK antibody (Cat# [TA50011-100]). Left: Cell lysates from untransfected HEK293T cells; Right: Cell lysates from HEK293T cells transfected with RC209857 using transfection reagent MegaTran 2.0 (Cat# [TT210002]).



Coomassie blue staining of purified CPSF2 protein (Cat# [TP309857]). The protein was produced from HEK293T cells transfected with CPSF2 cDNA clone (Cat# RC209857) using MegaTran 2.0 (Cat# [TT210002]).