

Product datasheet for **RC209856**

PHLDB3 (NM_198850) Human Tagged ORF Clone

Product data:

Product Type:	Expression Plasmids
Product Name:	PHLDB3 (NM_198850) Human Tagged ORF Clone
Tag:	Myc-DDK
Symbol:	PHLDB3
Mammalian Cell Selection:	Neomycin
Vector:	pCMV6-Entry (PS100001)
E. coli Selection:	Kanamycin (25 ug/mL)



[View online »](#)

ORF Nucleotide Sequence:

>RC209856 representing NM_198850
 Red=Cloning site Blue=ORF Green=Tags(s)

TTTTGTAATACGACTCACTATAGGGCGGCCGGGAATTCGTCGACTGGATCCGGTACCGAGGAGATCTGCC
 GCC**CGGATCGCC**

ATGGGGACGCGAAGCAGCCCCGAGGAGGGGACCCCGCCGCTGGTCCCAGGAATGCGACGTGGAGGTCC
 AGCCCCAGGGCCATCCCAGGAGTCCCGGAACAGGAGGCATCCGAAGTCTGGCGGAACCTTCGAGCCG
 CGGGGGAGCTGAGCAGCAGGCAGAGGAAGAAGAAGTGGGAGAAGGCAGCAGCACTGAGAGCAGCCGCGAC
 GCGCCCGAGGCTACGCCTCCGATAGCTATGGCGCCACACCTCCCGCATCCACCTCTTCGCGGGAAGGGG
 TGCGAGGGGGCGCGCGCCCTGCAAGGACAGCAGCTGGAGGCATTGACTCGTGTGGCCCTGATGGAGCA
 GCGAGTGAAGGAGCTACAGCGCCAGAGGAAGGAGCTGAGGATCGAGATGGAGGTGGAGGTGGCCTTGCTG
 CGGGGTGAGCTGGCTGGGAGCGAGTGGCCGCTCGCCGGGAGGAGGAGCAGCTGCGGGAGCTGCTGGAGC
 AGCAGGGCGCCTCGGAGCAGCGCGGCCAGCAGCGGGAACAGGAACAGAGGCGGCTGAGCCAGGAACG
 GGATCGCCTAGAGGGTCTTCGCCAGAGACTCCGCAAGGCCAGGGACAGCTCGACTCACAGCCAGAGGAC
 CAACGCGAGCGGCTTCTGCAAGGTGTGCAGGAGATGAGGGAACAACCTGGATGTGGCCCAACGTGCCTATG
 AGGACCTGGAGTTCAGCAACTGGAGCGGGAGAGCCGGCAGGAGGAGGATCGGGACAGCCCTGGGCC
 CCAGGTGCCAGACCCCAAGGTCCAGAACTCCAGGCCAGCATGGCGCAGCACAGAAGGGGTGCTCTGCAG
 CACCGGATCCGGGTCTTGAAGAGCAGCTCAAGTCACTGGGGGAGCAGATGGCAGCCGAGAGCCGGGGT
 TGAGCCGGAAGAAGGAGGAGGCCCTTCAAGCCCTGTACAGGAACGGAGCCGGCTGCTCGAGCTCAATTG
 CCTTCAGGAACACCTGGCGGGGACTTCTGTAGCCCAACCCGGCCCTACTAAGCTGTGTTACCCAG
 AAGACAGACCCGAGCTGCTGGTGTCTCAGGATGCCGTGGCCACTCCGCTGCCACCCCTACTTCTCTCT
 GCCTCTTTTCTGTCCACAGCTCCCTGCAGGGCTCCATTGGCCTCCAGAGGACTGGGAGCTGCCCGGAA
 AAGGGGGGAGAGGGGAGCCAGAGAGGATCCCCCGACCTCTGTCTTCCATTGTAATCCCTGGAG
 GCCTCAGCTCTCCCGCCAGCAGTGGGGGACTCCGGCAGATACCCCTCTACCAGCTGCTGAACTGTGGCC
 GTGGGAATAGCTGTGGGGCCATCCATCCAGACATTGCCACATGGAGCGGCTCCTGCAGCAGGCCATGGC
 GGAGAGGGAGCGGCTGCTCAAGGCCGGGAAGGAACAAGAAGGGGACGGAAGGTTCTCAGGCCCTGCT
 GTTCTGCCATCACGGCCCCACCCACCCACCCCTCCAGGCCCGGAATCTTGATCTCCGGCAGC
 ATCTGGAGGGATGGGGCCACAACCCGAAAACCTGCCACATGTGCAGGTGTCTGGGTGCTGCTGCCGTGG
 ACCCTGGTGAAGATGGGCGCCGATCAAGACCTGGAGGAAGCGATGGTCTGCTTTGACCGCCAAGCC
 CGCCGCTTGGCCTACTATGCGGACAAGGAAGAGACCAAGCTCAAAGGTGTCATCTACTTCCAGGCCATTG
 AGGAAGTCTATTATGACCACTTACGCTGTGCCTTCAAGAGCCCAACCCCGCCTGACCTTCTGCGTCAA
 AACCTACGAACGCCTTTTCTACATGGTGGCTCCGAGCCCCGAAGCCATGCGCATTGGATGGACGTCATC
 GTGACCGCGCTGACGAAAACACGCCCC

ACGCGTACGCGGCCGCTCGAGCAGAACTCATCTCAGAAGAGGATCTGGCAGCAATGATATCCTGGATT
 ACAAGGATGACGACGATAAGGTTAA

Protein Sequence: >RC209856 representing NM_198850
Red=Cloning site Green=Tags(s)

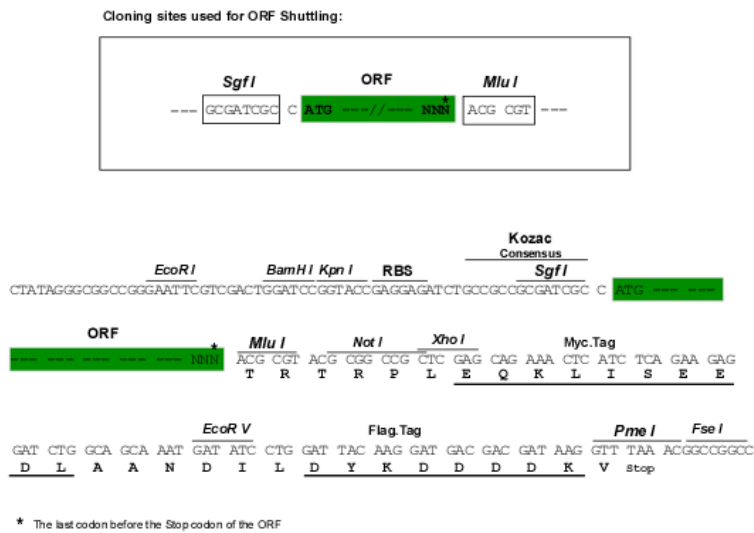
MGTRSSPEEGTPPPLVPECDVEVQPQGHPEESREQEASEVLAEPSSRGGAEQQAEVEEVGEGSSTESSRD
 APEATPPIAMAATPPASTSSREGVIRGAARRLQGQLEALTRVALMEQVRKELQRQRKELRIEMEVEVALL
 RGELAGERVAARREEQLELLELQQAASEQRGRQREQEQRRLSQERDRLEGLRQRLRKAQGQLDSQPED
 QRERLLQGVQEMREQLDVAQRAYEDLEFQQLERESRQEEEDRDRSPGPQVPDPKVVQELQASMAQHRRGALQ
 HRIRVLEEQLKSLGEQMAESRGLSRKKEEALQALSQERSRLELNCLQGTGGDFSEPNPALTKLLFTQ
 KTDRQLLVLDVAHSAATPTSSCLFSVHSSLQGSIGLQRTGSLPRKRGERSQGRGSPRPLSFHCTESLE
 ASALPPAVGDSGRYPLYQLLNCGRGNSCGAIHPDIAHMERLLQQAMAERERLLKAREGTRRGTEGSSGPA
 VPAITAPTPPHPPGPRILDRLQHLEGWGHNPENCPHVQVSGCCCRGPLVKMGRIKTWRKRWFCFDRQA
 RRLAYYADKEETKLGVIYFQAIEEVVYDHLRCAFKSPNPRLTFCVKTYERLFYMVAPSPEAMRIWMDVI
 VTAADENHAP

TRTRPLEQKLI SEEDLAANDILDYKDDDDKV

Chromatograms: https://cdn.origene.com/chromatograms/mk8025_e03.zip

Restriction Sites: SgfI-MluI

Cloning Scheme:



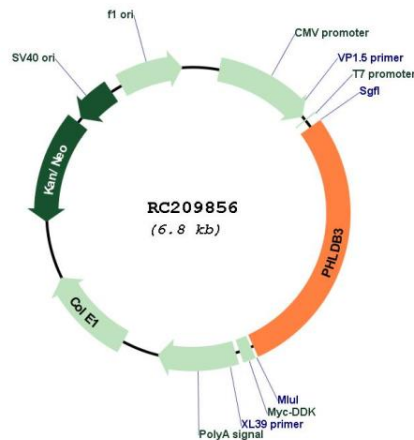
ACCN: NM_198850

ORF Size: 1920 bp

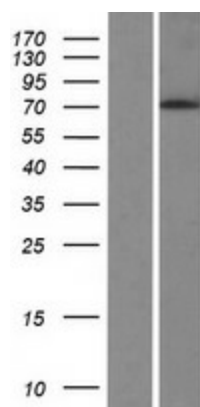
OTI Disclaimer: The molecular sequence of this clone aligns with the gene accession number as a point of reference only. However, individual transcript sequences of the same gene can differ through naturally occurring variations (e.g. polymorphisms), each with its own valid existence. This clone is substantially in agreement with the reference, but a complete review of all prevailing variants is recommended prior to use. [More info](#)

OTI Annotation: This clone was engineered to express the complete ORF with an expression tag. Expression varies depending on the nature of the gene.

Components:	The ORF clone is ion-exchange column purified and shipped in a 2D barcoded Matrix tube containing 10ug of transfection-ready, dried plasmid DNA (reconstitute with 100 ul of water).
Reconstitution Method:	<ol style="list-style-type: none"> 1. Centrifuge at 5,000xg for 5min. 2. Carefully open the tube and add 100ul of sterile water to dissolve the DNA. 3. Close the tube and incubate for 10 minutes at room temperature. 4. Briefly vortex the tube and then do a quick spin (less than 5000xg) to concentrate the liquid at the bottom. 5. Store the suspended plasmid at -20°C. The DNA is stable for at least one year from date of shipping when stored at -20°C.
RefSeq:	<u>NM_198850.3, NP_942147.3</u>
RefSeq Size:	2505 bp
RefSeq ORF:	1923 bp
Locus ID:	653583
UniProt ID:	<u>Q6NSJ2</u>
Cytogenetics:	19q13.31
MW:	71.7 kDa

Product images:


Circular map for RC209856



Western blot validation of overexpression lysate (Cat# [LY404758]) using anti-DDK antibody (Cat# [TA50011-100]). Left: Cell lysates from untransfected HEK293T cells; Right: Cell lysates from HEK293T cells transfected with RC209856 using transfection reagent MegaTran 2.0 (Cat# [TT210002]).