

Product datasheet for RC209847

Hsp47 (SERPINH1) (NM_001235) Human Tagged ORF Clone

Product data:

Product Type:	Expression Plasmids
Product Name:	Hsp47 (SERPINH1) (NM_001235) Human Tagged ORF Clone
Tag:	Myc-DDK
Symbol:	Hsp47
Synonyms:	AsTP3; CBP1; CBP2; gp46; HSP47; OI10; PIG14; PPROM; RA-A47; SERPINH2
Mammalian Cell Selection:	Neomycin
Vector:	pCMV6-Entry (PS100001)
E. coli Selection:	Kanamycin (25 ug/mL)
ORF Nucleotide Sequence:	>RC209847 ORF sequence Red=Cloning site Blue=ORF Green=Tags(s)

TTTTGTAATACGACTCACTATAGGGCGGCCGGAATTCGTCGACTGGATCCGGTACCGAGGAGATCTGCC
GCC**CGATCGCC**

ATGCGCTCCCTCCTGCTTCTCAGCGCCTTCTGCCTCCTGGAGGCGGCCCTGGCCGCCGAGGTGAAGAAAC
CTGCAGCCGAGCAGCTCCTGGCACTGCGGAGAAGTTGAGCCCCAAGGCGGCCACGCTTGCCGAGCGCAG
CGCCGGCTGGCCTTTCAGCTTGTACCAGGCCATGGCCAAGGACCAGGCAGTGGAGAATCCTGGTGTCA
CCCGTGGTGGTGGCCTCGTCGCTGGGGCTCGTGTGCTGGGCGGAAGGCGACCACGGCGTGCAGGCCA
AGGCAGTGTGAGCGCCGAGCAGCTGCGCGACGAGGAGTGCACGCCGGCTGGGCGAGCTGCTGCGCTC
ACTCAGCAACTCCACGGCGCGCAACGTGACCTGGAAGCTGGGCGAGCCGACTGTACGGACCCAGCTCAGTG
AGCTTCGCTGATGACTTCGTGCGCAGCAGCAAGCAGCACTACAACCTGCGAGCACTCCAAGATCAACTTCC
GCGACAAGCGCAGCGCGCTGCAGTCCATCAACGAGTGGGCGCGCAGACCACCGACGGCAAGCTGCCCGA
GGTCAACAAGGACGTGGAGCGCACGGACGGCGCCCTGTTAGTCAACGCCATGTTCTTCAAGCCACTGG
GATGAGAAATCCACCACAAGATGGTGGACAACCGTGGCTTCATGGTACTCGGTCTATAACCGTGGGTG
TCATGATGATGCACCGGACAGGCCTCTACAACCTACTACGACGACGAGAAGGAAAAGCTGCAATCGTGA
GATGCCCTGGCCACAAGCTCTCCAGCCTCATCATCTTCATGCCCATCACGTGGAGCCTCTCGAGCGC
CTTGAAAAGCTGCTAACCAAGAGCAGCTGAAGATCTGGATGGGAAGATGCAGAAGAAGGCTGTTGCCA
TCTCCTTGCCCAAGGGTGTGGTGGAGGTGACCCATGACCTGCAGAAACACCTGGCTGGGCTGGGCTGAC
TGAGGCCATTGACAAGAACAAGGCCGACTTGTACGCATGTCAGGCAAGAAGACCTGTACTGGCCAGC
GTGTTCCACGCCACCGCCTTTGAGTTGGACACAGATGGCAACCCCTTTGACCAGGACATCTACGGCGCG
AGGAGCTGCGCAGCCCCAAGCTGTTCTACGCCGACCCCTTTCATCTTCTAGTGGGGACACCCAAAG
CGGCTCCCTGCTATTATTGGGCGCCTGGTCCGGCCTAAGGGTGACAAGATGCGAGACGAGTTA

ACGGTACGGCGCCGCTCGAGCAGAACTCATCTCAGAAGAGGATCTGGCAGCAATGATATCCTGGATT
ACAAGGATGACGACGATAAGGTTTAA



[View online »](#)

Reconstitution Method:

1. Centrifuge at 5,000xg for 5min.
2. Carefully open the tube and add 100ul of sterile water to dissolve the DNA.
3. Close the tube and incubate for 10 minutes at room temperature.
4. Briefly vortex the tube and then do a quick spin (less than 5000xg) to concentrate the liquid at the bottom.
5. Store the suspended plasmid at -20°C. The DNA is stable for at least one year from date of shipping when stored at -20°C.

RefSeq: [NM_001235.5](#)

RefSeq Size: 2289 bp

RefSeq ORF: 1257 bp

Locus ID: 871

UniProt ID: [P50454](#)

Cytogenetics: 11q13.5

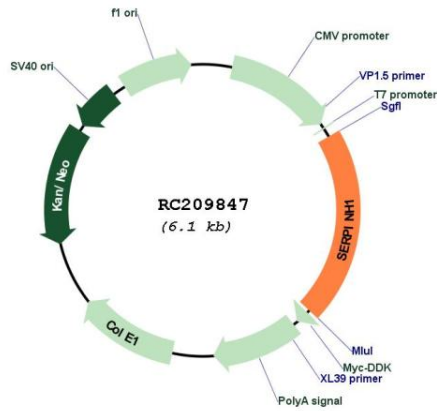
Domains: SERPIN

Protein Families: Druggable Genome

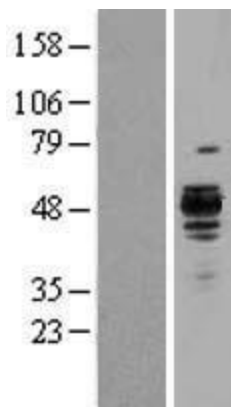
MW: 46.5 kDa

Gene Summary: This gene encodes a member of the serpin superfamily of serine proteinase inhibitors. The encoded protein is localized to the endoplasmic reticulum and plays a role in collagen biosynthesis as a collagen-specific molecular chaperone. Autoantibodies to the encoded protein have been found in patients with rheumatoid arthritis. Expression of this gene may be a marker for cancer, and nucleotide polymorphisms in this gene may be associated with preterm birth caused by preterm premature rupture of membranes. Alternatively spliced transcript variants have been observed for this gene, and a pseudogene of this gene is located on the short arm of chromosome 9. [provided by RefSeq, May 2011]

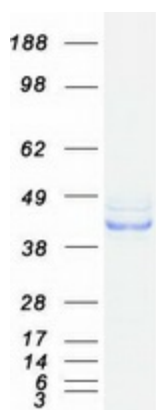
Product images:



Circular map for RC209847



Western blot validation of overexpression lysate (Cat# [LY400497]) using anti-DDK antibody (Cat# [TA50011-100]). Left: Cell lysates from untransfected HEK293T cells; Right: Cell lysates from HEK293T cells transfected with RC209847 using transfection reagent MegaTran 2.0 (Cat# [TT210002]).



Coomassie blue staining of purified SERPINH1 protein (Cat# [TP309847]). The protein was produced from HEK293T cells transfected with SERPINH1 cDNA clone (Cat# RC209847) using MegaTran 2.0 (Cat# [TT210002]).