

Product datasheet for **RC209844**

IGFBP7 (NM_001553) Human Tagged ORF Clone

Product data:

Product Type:	Expression Plasmids
Product Name:	IGFBP7 (NM_001553) Human Tagged ORF Clone
Tag:	Myc-DDK
Symbol:	IGFBP7
Synonyms:	AGM; FSTL2; IBP-7; IGFBP-7; IGFBP-7v; IGFBPRP1; MAC25; PSF; RAMSVPS; TAF
Mammalian Cell Selection:	Neomycin
Vector:	pCMV6-Entry (PS100001)
E. coli Selection:	Kanamycin (25 ug/mL)
ORF Nucleotide Sequence:	>RC209844 representing NM_001553 Red=Cloning site Blue=ORF Green=Tags(s)

TTTTGTAATACGACTCACTATAGGGCGGCCGGAATTCGTCGACTGGATCCGGTACCGAGGAGATCTGCC
GCC**CGCATCGCC**

ATGGAGCGGCCGTCGCTGCGCGCCCTGCTCCTCGGCGCCGCTGGGCTGCTGCTCCTGCTCCTGCCCTCT
CCTCTTCTCTCTTTCGGACACCTGCGGCCCTGCGAGCCGGCCCTGCCCCGCCCTGCCCCGCTGGG
CTGCCTGCTGGGCGAGACCCGCGACGCGTGCCTGCTGCCCTATGTGCGCCCGGGCGAGGGCGAGCCG
TGCGGGGTGGCGGCCCGGCAGGGGTACTGCGCGCCGGCATGGAGTGCCTGAAGAGCCGCAAGAGGC
GGAAGGGTAAAGCCGGGCGAGCAGCCGGCGGTCCGGGTGAAGCGCGTGTGCGTGTGAAGAGCCGCTA
CCCGGTGTGCGGCGAGCAGCGCACCACTACCCGAGCGGCTGCCAGCTGCGCGCCGCCAGCCAGAGGGCC
GAGAGCCGCGGGGAGAAGGCCATCACCCAGGTCAGCAAGGGCACCTGCGAGCAAGTCTTCCATAGTGA
CGCCCCCAAGGACATCTGGAATGTCACTGGTCCAGGTGACTTGAGCTGTGAGGTATCGGAATCCC
GACACCTGTCTCATCTGGAACAAGGTAAGGAGGGTCACTATGGAGTTCAAAGGACAGAAGCTCTGCT
GGTGACCGGGACAACCTGGCCATTCAGACCCGGGTGGCCAGAAAAGCATGAAGTAACTGGCTGGGTGC
TGGTATCTCTAAGTAAGGAAGATGCTGGAGAATATGAGTGCCATGCATCCAATTCCTCAAGGACAGGC
TTCAGCATCAGCAAAAATTACAGTGGTTGATGCCTTACATGAAATACCAAGTGAAGGTAAGGTGCC
GAGCTA

AC**CGCGCCGCT**CGAGCAGAACTCATCTCAGAAGAGGATCTGGCAGCAAATGATATCCTGGGA
TTACAAGGATGACGACGATAAGGTTTAA



[View online »](#)

Protein Sequence: >RC209844 representing NM_001553
Red=Cloning site Green=Tags(s)

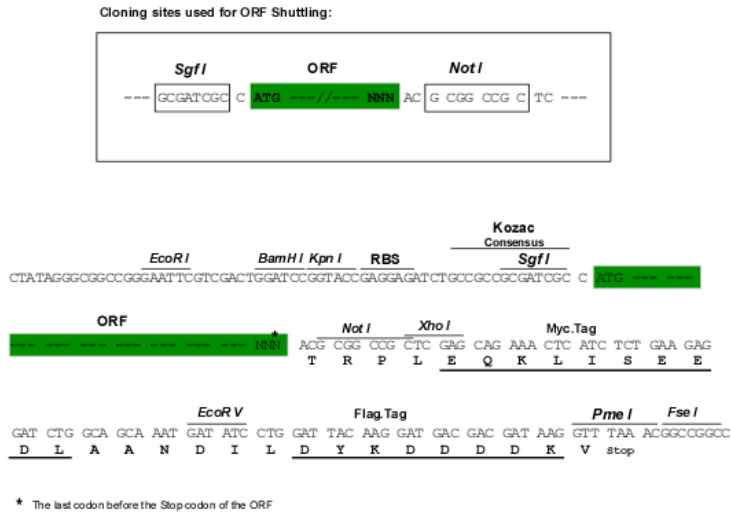
MERPSLRALLLGAAGLLLLLPLSSSSSDTCGPCEPASCPLPPLGCLLGETRDACGCCPMCARGEGEP
 CGGGGAGRGYCAPGMECVKSRKRRKKGAGAAAGGPGVSGVCVCKSRYPVCGSDGTTYPSCQLRAASQRA
 ESRGEKAITQVSKGTCEQGPSIVTPPKDIWNVTGAQVYLSCEVIGIPTPVLINWKVGRHYGVQRTELLP
 GDRDNLAIQTRGGPEKHEVTGWVLSPLSKEDAGEYECHASNSQGQASASAKITVVDALHEIPVKKGEGA
 EL

TRRLEQKLISEEDLAANDILDYKDDDDKV

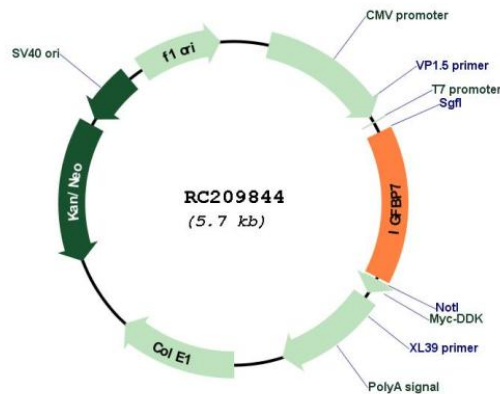
Chromatograms: https://cdn.origene.com/chromatograms/mg2977_d03.zip

Restriction Sites: SgfI-NotI

Cloning Scheme:



Plasmid Map:

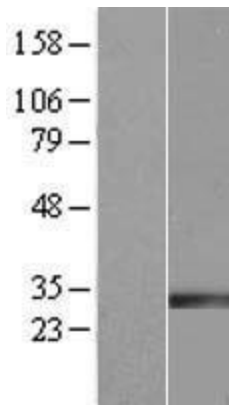


ACCN: NM_001553

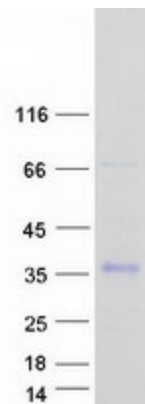
ORF Size:	846 bp
OTI Disclaimer:	<p>Due to the inherent nature of this plasmid, standard methods to replicate additional amounts of DNA in E. coli are highly likely to result in mutations and/or rearrangements. Therefore, OriGene does not guarantee the capability to replicate this plasmid DNA. Additional amounts of DNA can be purchased from OriGene with batch-specific, full-sequence verification at a reduced cost. Please contact our customer care team at custsupport@origene.com or by calling 301.340.3188 option 3 for pricing and delivery.</p> <p>The molecular sequence of this clone aligns with the gene accession number as a point of reference only. However, individual transcript sequences of the same gene can differ through naturally occurring variations (e.g. polymorphisms), each with its own valid existence. This clone is substantially in agreement with the reference, but a complete review of all prevailing variants is recommended prior to use. More info</p>
OTI Annotation:	This clone was engineered to express the complete ORF with an expression tag. Expression varies depending on the nature of the gene.
Components:	The ORF clone is ion-exchange column purified and shipped in a 2D barcoded Matrix tube containing 10ug of transfection-ready, dried plasmid DNA (reconstitute with 100 ul of water).
Reconstitution Method:	<ol style="list-style-type: none"> 1. Centrifuge at 5,000xg for 5min. 2. Carefully open the tube and add 100ul of sterile water to dissolve the DNA. 3. Close the tube and incubate for 10 minutes at room temperature. 4. Briefly vortex the tube and then do a quick spin (less than 5000xg) to concentrate the liquid at the bottom. 5. Store the suspended plasmid at -20°C. The DNA is stable for at least one year from date of shipping when stored at -20°C.
RefSeq:	NM_001553.3
RefSeq Size:	1124 bp
RefSeq ORF:	849 bp
Locus ID:	3490
UniProt ID:	Q16270
Cytogenetics:	4q12
Domains:	IB, kazal, IG
Protein Families:	Secreted Protein
MW:	28.9 kDa

Gene Summary:

This gene encodes a member of the insulin-like growth factor (IGF)-binding protein (IGFBP) family. IGFBPs bind IGFs with high affinity, and regulate IGF availability in body fluids and tissues and modulate IGF binding to its receptors. This protein binds IGF-I and IGF-II with relatively low affinity, and belongs to a subfamily of low-affinity IGFBPs. It also stimulates prostacyclin production and cell adhesion. Alternatively spliced transcript variants encoding different isoforms have been described for this gene, and one variant has been associated with retinal arterial macroaneurysm (PMID:21835307). [provided by RefSeq, Dec 2011]

Product images:

Western blot validation of overexpression lysate (Cat# [LY419862]) using anti-DDK antibody (Cat# [TA50011-100]). Left: Cell lysates from untransfected HEK293T cells; Right: Cell lysates from HEK293T cells transfected with RC209844 using transfection reagent MegaTran 2.0 (Cat# [TT210002]).



Coomassie blue staining of purified IGFBP7 protein (Cat# [TP309844]). The protein was produced from HEK293T cells transfected with IGFBP7 cDNA clone (Cat# RC209844) using MegaTran 2.0 (Cat# [TT210002]).