

## Product datasheet for **RC209841**

### Cripto1 (TDGF1) (NM\_003212) Human Tagged ORF Clone

#### Product data:

**Product Type:** Expression Plasmids  
**Product Name:** Cripto1 (TDGF1) (NM\_003212) Human Tagged ORF Clone  
**Tag:** Myc-DDK  
**Symbol:** Cripto1  
**Synonyms:** CR; CR-1; CRGF; CRIPTO  
**Mammalian Cell Selection:** Neomycin  
**Vector:** pCMV6-Entry (PS100001)  
**E. coli Selection:** Kanamycin (25 ug/mL)  
**ORF Nucleotide Sequence:** >RC209841 ORF sequence  
 Red=Cloning site Blue=ORF Green=Tags(s)

TTTTGTAATACGACTCACTATAGGGCGGCCGGAATTCGTCGACTGGATCCGGTACCGAGGAGATCTGCC  
 GCC**CGGATCGCC**

ATGGACTGCAGGAAGATGGCCCGCTTCTCTTACAGTGTGATTTGGATCATGGCCATTTCTAAAGCCTTTG  
 AACTGGGATTAGTTGCCGGGCTGGGCCATCAGGAATTTGCTCGTCCATCTCGGGGATACCTGGCCTTCAG  
 AGATGACAGCATTGGCCCCAGGAGGAGCCTGCAATTCGGCTCGGTCTCCAGCGTGTGCCGCCATG  
 GGGATACAGCACAGTAAGGAGCTAAACAGAACCTGCTGCCTGAATGGGGAACTGCATGCTGGGTCT  
 TTTGTGCCTGCCCTCCCTCTTCTACGGACGGAAGTGTGAGCAGATGTGCGCAAAGAGAACTGTGGGTC  
 TGTGCCCATGACACCTGGCTGCCAAGAAGTGTCCCTGTGAAATGCTGGCACGGTCAGCTCCGCTGC  
 TTTCTCAGGCATTTCTACCCGGCTGTGATGGCCTTGTGATGGATGAGCACCTCGTGGCTCCAGGACTC  
 CAGAACTACCACCGTCTGCACGTAACCACTTTATGCTAGTTGGCATCTGCCTTTCTATACAAAGCTA  
 CTAT

**ACGCGT**ACGCGGCCGCTCGAGCAGAACTCATCTCAGAAGAGGATCTGGCAGCAATGATATCCTGGATT  
 ACAAGGATGACGACGATAAGGTTTAA

**Protein Sequence:** >RC209841 protein sequence  
 Red=Cloning site Green=Tags(s)

MDCRKMARFSYSVIWIMAIKAFELGLVAGLGHQEFARPSRGLAFRDDSIWPQEPAIRPRSSQRVPPM  
 GIQHSKELNRTCCLNGGTCMLGSFCACPPSFYGRNCEHVRKENCVPHDTWLPKKCSLCKCWHGQLRC  
 FPQAFPLPGCDGLVMDEHLVASRTPPELPPSARTTTFMLVGICLSIQSYY

**TRTRPLEQKLI**SEEDLAANDILDYKDDDDKV

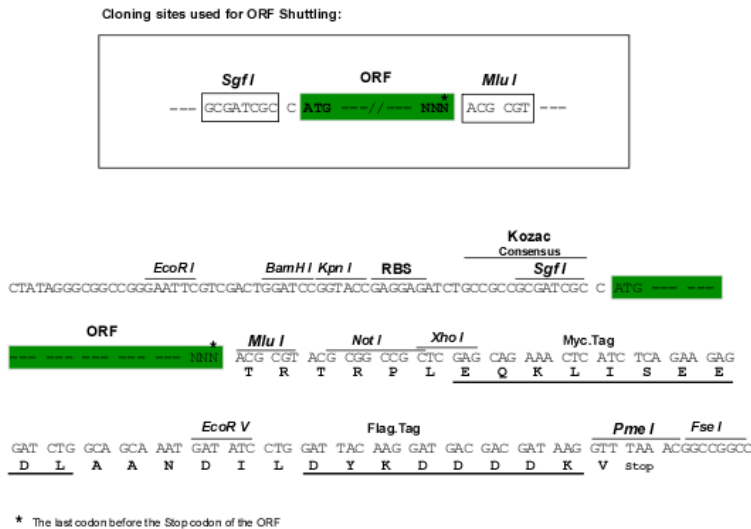


[View online »](#)

**Chromatograms:** [https://cdn.origene.com/chromatograms/mk6142\\_e10.zip](https://cdn.origene.com/chromatograms/mk6142_e10.zip)

**Restriction Sites:** SgfI-MluI

**Cloning Scheme:**



**ACCN:** NM\_003212

**ORF Size:** 564 bp

**OTI Disclaimer:** The molecular sequence of this clone aligns with the gene accession number as a point of reference only. However, individual transcript sequences of the same gene can differ through naturally occurring variations (e.g. polymorphisms), each with its own valid existence. This clone is substantially in agreement with the reference, but a complete review of all prevailing variants is recommended prior to use. [More info](#)

**OTI Annotation:** This clone was engineered to express the complete ORF with an expression tag. Expression varies depending on the nature of the gene.

**Components:** The ORF clone is ion-exchange column purified and shipped in a 2D barcoded Matrix tube containing 10ug of transfection-ready, dried plasmid DNA (reconstitute with 100 ul of water).

- Reconstitution Method:**
1. Centrifuge at 5,000xg for 5min.
  2. Carefully open the tube and add 100ul of sterile water to dissolve the DNA.
  3. Close the tube and incubate for 10 minutes at room temperature.
  4. Briefly vortex the tube and then do a quick spin (less than 5000xg) to concentrate the liquid at the bottom.
  5. Store the suspended plasmid at -20°C. The DNA is stable for at least one year from date of shipping when stored at -20°C.

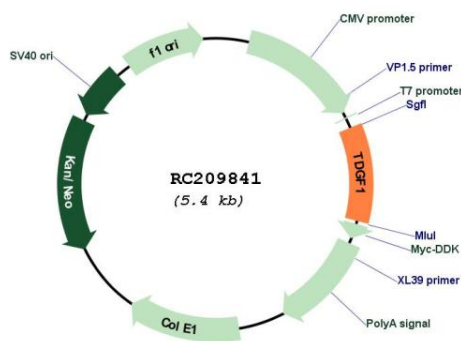
**Note:** Plasmids are not sterile. For experiments where strict sterility is required, filtration with 0.22um filter is required.

**RefSeq:** [NM\\_003212.4](#)

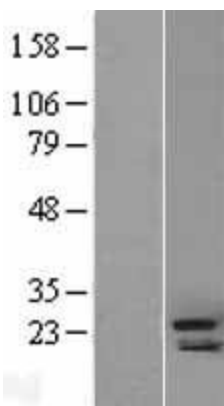
**RefSeq Size:** 2174 bp

RefSeq ORF:	567 bp
Locus ID:	6997
UniProt ID:	<a href="#">P13385</a>
Cytogenetics:	3p21.31
Protein Families:	Druggable Genome, Embryonic stem cells, ES Cell Differentiation/IPS, Stem cell - Pluripotency, Transmembrane
MW:	21.1 kDa
Gene Summary:	This gene encodes an epidermal growth factor-related protein that contains a cripto, FRL-1, and cryptic domain. The encoded protein is an extracellular, membrane-bound signaling protein that plays an essential role in embryonic development and tumor growth. Mutations in this gene are associated with forebrain defects. Pseudogenes of this gene are found on chromosomes 2, 3, 6, 8, 19 and X. Alternate splicing results in multiple transcript variants. [provided by RefSeq, Mar 2010]

### Product images:



Circular map for RC209841



Western blot validation of overexpression lysate (Cat# [LY401110]) using anti-DDK antibody (Cat# [TA50011-100]). Left: Cell lysates from untransfected HEK293T cells; Right: Cell lysates from HEK293T cells transfected with RC209841 using transfection reagent MegaTran 2.0 (Cat# [TT210002]).