

Product datasheet for **RC209831**

LRRC32 (NM_005512) Human Tagged ORF Clone

Product data:

Product Type:	Expression Plasmids
Product Name:	LRRC32 (NM_005512) Human Tagged ORF Clone
Tag:	Myc-DDK
Symbol:	LRRC32
Synonyms:	CPPRDD; D11S833E; GARP
Mammalian Cell Selection:	Neomycin
Vector:	pCMV6-Entry (PS100001)
E. coli Selection:	Kanamycin (25 ug/mL)



[View online »](#)

ORF Nucleotide Sequence:

>RC209831 ORF sequence
 Red=Cloning site Blue=ORF Green=Tags(s)

TTTTGTAATACGACTCACTATAGGGCGGCCGGAATTCGTCGACTGGATCCGGTACCGAGGAGATCTGCC
 GCC**CGGATCGCC**

ATGAGACCCAGATCCTGCTGCTCCTGGCCCTGCTGACCTAGGCCTGGCTGCACAACACCAAGACAAAG
 TGCCTGTAAAGATGGTGGACAAGAAGGTCTCGTGCCAGGTTCTGGGCCTGCTCCAGGTCCCCTCGGTGCT
 CCCGCCAGACACTGAGACCCTTGATCTATCTGGGAACCAGCTGCGGAGTATCCTGGCCTCACCCCTGGG
 TTCTACACGGCACTTCGTCACCTGGACCTGAGCACCAATGAGATCAGCTTCTCCAGCCAGGAGCCTTCC
 AGGCCCTGACCCACCTGGAGCACCTCAGCCTGGCTCACAACCGGCTGGCGATGGCCACTGCGCTGAGTGC
 TGGTGGCTGGGCCCCCTGCCACGCGTGACCTCCCTGGACCTGTCTGGGAACAGCCTGTACAGCGGCTG
 CTGGAGCGGCTGCTGGGGAGGCCACCCAGCCTGCATACCCTCTCACTGGCGGAGAACAGTCTGACTCGCC
 TCACCCGCCACACCTCCGGGACATGCCTGCGCTGGAGCAGCTTGACCTGCATAGCAACGTGCTGATGGA
 CATCGAGGATGGGCGCTTCGAGGCTGTCGCCCGCCTGACCCATCTCAACCTCTCCAGGAATCCCTCACC
 TGATCTCCGACTTCAGCCTCCAGCAGCTGCGGGTGTAGACCTGAGCTGCAACAGCATCGAGGCCCTTC
 AGACGGCCTCCCAGCCCCAGGCTGAGTTCAGCTCACCTGGCTTGACCTGCGGGAGAACAACTGTCCCA
 TTTCCCGACCTGGCCGCGCTCCCGAGACTCATCTACCTGAACCTGTCCAACAACCTCATCCGGCTCCCC
 ACAGGGCCACCCAGGACAGCAAGGGCATCCACGCACCTCCGAGGGCTGGTCAGCCCTGCCCTCTCAG
 CCCCCAGCGGGAATGCCAGCGGCCGCCCTTTCCAGCTCTTGAATCTGGATTTGAGCTACAATGAGAT
 TGAGCTCATCCCCGACAGCTTTCTTGAGCACCTGACCTCCCTGTGCTTCTGAACCTCAGCAGAACTGC
 TTGGCGACCTTTGAGGCCCGCGCTTAGGCTCCCTGCCCTGCCTGATGCTCCTTGACTTAAGCCACAATG
 CCCTGGAGACACTGGAACCTGGCGCCAGAGCCCTGGGGTCTCTGCGGACGCTGCTCCTACAGGGCAATGC
 CCTGCGGGACCTGCCCCATACACCTTTGCCAATCTGGCCAGCCTGCAGCGGCTCAACCTGCAGGGGAAC
 CGAGTCAGCCCCGTGGGGGGCCAGATGAGCCTGGCCCCCTCCGGCTGTGTGGCCTTCTCCGGCATACCT
 CCCTCCGACGCTGAGCCTGGTGGATAATGAGATAGAGCTGCTCAGGGCAGGGGCCTTCTCCACACCCC
 ACTGACTGAGCTGGACCTTTCTTCCAATCCTGGGCTGGAGGTGGCCACGGGGGCTTGGGAGGCTGGAG
 GCCTCCTTGAGGCTCCTGGCACTGCAGGGCAACGGGCTGATGGTCTGCAGGTGGACCTGCCCTGCTTCA
 TCTGCCTAAGCGGCTCAATCTTGCCGAGAACCCTGAGCCACCTTCCCGCTGGACACAGGCTGTGTC
 ACTGGAGGTGCTGGACCTGCGAAACAACAGCTTACGCTCCTGCCAGGCAGTGCCATGGGTGGCCTGGAG
 ACCAGCCTCCGGGCTCTACCTGCAGGGGAATCCACTCAGCTGCTGCGCAATGGCTGGCTGGCAGCCC
 AGCTGCACCAGGGCCGTGTGGACGTGGACGCCACCCAGGACCTGATCTGCCGCTTCACTCCAGGAGGA
 GGTGTCCCTGAGCCACGTGCGTCCCGAAGACTGTGAGAAGGGGGACTGAAGAACATCAACCTCATCATC
 ATCCTCACCTTACTACTGGTCTCTGCCATCCTCCTCACCACGCTGGCCGCTGCTGCTGCGTCCGCCGGC
 AGAAGTTAACCAACAGTATAAAGCC

AG**CGGACCG**ACGCGTACGCGGCCGCTCGAGCAGAACTCATCTCAGAAGAGGATCTGGCAGCAAATGATATCC
 TGGATTACAAGGATGACGACGATAAGGTTAA

Protein Sequence: >RC209831 protein sequence
Red=Cloning site Green=Tags(s)

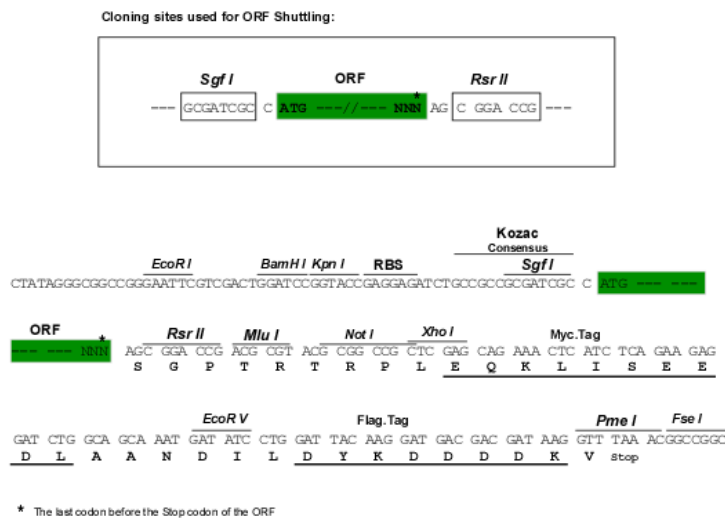
MRPQILLLLALLTLGLAAQHDKVPCKMVDKVKVSCQVLLQVPSVLPDPTETLDLSGNQLRSILASPLG
 FYTALRHLDLSTNEISFLQPGAFQALTHLEHLSLAHNRLAMATALSAGGLGPLRVTSLDLSGNSLYSGL
 LERLLGEAPSLHTLSLAENSLTRLTRHTFRDMPALEQLDLHSNVLMDIEDGAFEGLPRLTHLNLNRSLT
 CISDFSLQQLRVLDLSCNSIEAFQTASQPQAEFQLTWLDLRENKLLHFPDLAALPRLIYLNLSNNLIRLP
 TGPPQDSKGIHAPSEGWSALPLSAPSGNASGRPLSQLLNLDLSYNEIELIPDSFLEHLTSLCFLNLSRNC
 LRTFEARRLGSLPCLMLLDLSHNALETLELGARALGSLRTLLLQGNALRDLPPYTFANLASLQRLNLQGN
 RVSPCGPDEPGPSGCVAFSGITSLRSLVDNEIELLRAGAFHTPLTELDLSSNPGLEVATGALGGLE
 ASLEVLALQGNLMVLQVDLPCFICLKRLNLAENRSLHLPWTQAVSLEVLDRNNSFLLPGSAMGGLE
 TSLRRLYLQGNPLSCCGNWLAQLHQGRVDVDTQDLICRFSSQEEVSLSHVRPEDCEKGLKNINLII
 ILTFILVSAILLTTLAACCCVRRQKFNQYKA

SGPTRTRPLEQKLI SEEDLAANDILDYKDDDDKV

Chromatograms: https://cdn.origene.com/chromatograms/mk6186_d11.zip

Restriction Sites: SgfI-RsrII

Cloning Scheme:

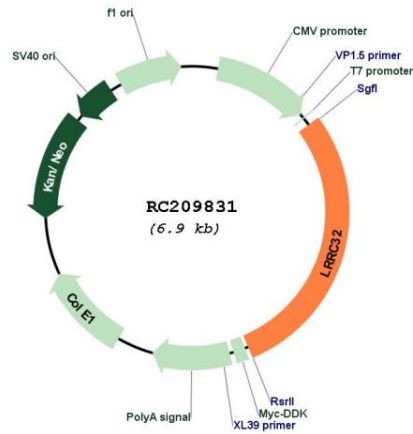


ACCN: NM_005512

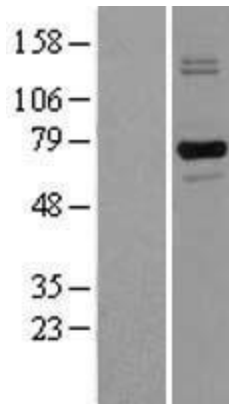
ORF Size: 1986 bp

OTI Disclaimer:	<p>Due to the inherent nature of this plasmid, standard methods to replicate additional amounts of DNA in E. coli are highly likely to result in mutations and/or rearrangements. Therefore, OriGene does not guarantee the capability to replicate this plasmid DNA. Additional amounts of DNA can be purchased from OriGene with batch-specific, full-sequence verification at a reduced cost. Please contact our customer care team at custsupport@origene.com or by calling 301.340.3188 option 3 for pricing and delivery.</p> <p>The molecular sequence of this clone aligns with the gene accession number as a point of reference only. However, individual transcript sequences of the same gene can differ through naturally occurring variations (e.g. polymorphisms), each with its own valid existence. This clone is substantially in agreement with the reference, but a complete review of all prevailing variants is recommended prior to use. More info</p>
OTI Annotation:	This clone was engineered to express the complete ORF with an expression tag. Expression varies depending on the nature of the gene.
Components:	The ORF clone is ion-exchange column purified and shipped in a 2D barcoded Matrix tube containing 10ug of transfection-ready, dried plasmid DNA (reconstitute with 100 ul of water).
Reconstitution Method:	<ol style="list-style-type: none"> 1. Centrifuge at 5,000xg for 5min. 2. Carefully open the tube and add 100ul of sterile water to dissolve the DNA. 3. Close the tube and incubate for 10 minutes at room temperature. 4. Briefly vortex the tube and then do a quick spin (less than 5000xg) to concentrate the liquid at the bottom. 5. Store the suspended plasmid at -20°C. The DNA is stable for at least one year from date of shipping when stored at -20°C.
RefSeq:	NM_005512.2
RefSeq Size:	4327 bp
RefSeq ORF:	1989 bp
Locus ID:	2615
UniProt ID:	Q14392
Cytogenetics:	11q13.5
Domains:	LRRNT, LRR, LRR_RI, LRR_TYP, LRR_PS
Protein Families:	Transmembrane
MW:	72 kDa
Gene Summary:	<p>This gene encodes a type I membrane protein which contains 20 leucine-rich repeats. Alterations in the chromosomal region 11q13-11q14 are involved in several pathologies. [provided by RefSeq, Jul 2008]</p>

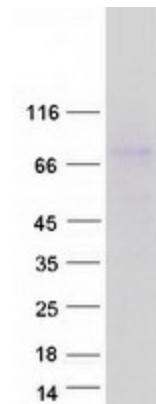
Product images:



Circular map for RC209831



Western blot validation of overexpression lysate (Cat# [LY427024]) using anti-DDK antibody (Cat# [TA50011-100]). Left: Cell lysates from untransfected HEK293T cells; Right: Cell lysates from HEK293T cells transfected with [RC226075] using transfection reagent MegaTran 2.0 (Cat# [TT210002]).



Coomassie blue staining of purified LRR32 protein (Cat# [TP309831]). The protein was produced from HEK293T cells transfected with LRR32 cDNA clone (Cat# RC209831) using MegaTran 2.0 (Cat# [TT210002]).