

Product datasheet for **RC209830**

LOXL1 (NM_005576) Human Tagged ORF Clone

Product data:

| | |
|---------------------------|--|
| Product Type: | Expression Plasmids |
| Product Name: | LOXL1 (NM_005576) Human Tagged ORF Clone |
| Tag: | Myc-DDK |
| Symbol: | LOXL1 |
| Synonyms: | LOL; LOXL |
| Mammalian Cell Selection: | Neomycin |
| Vector: | pCMV6-Entry (PS100001) |
| E. coli Selection: | Kanamycin (25 ug/mL) |



[View online »](#)

ORF Nucleotide Sequence:

>RC209830 representing NM_005576
 Red=Cloning site Blue=ORF Green=Tags(s)

TTTTGTAATACGACTCACTATAGGGCGGCCGGAATTCGTCGACTGGATCCGGTACCGAGGAGATCTGCC
 GCC**CGGATCGCC**

ATGGCTCTGGCCGAGGCAGCCGCGAGCTGGGGCCCTGGTGTGGGGCGCCTGCCTGTGCGTGTGGTGC
 ACGGGCAGCAGGCGCAGCCCGGGCAGGGCTCGGACCCCGCCCGCTGGCGGCAGCTGATCCAGTGGGAGAA
 CAACGGGCAGGTGTACAGCTTGTCTCAACTCGGGCTCAGAGTACGTGCCGGCCGGACCTCAGCGCTCCGAG
 AGTAGCTCCCGGGTGTCTGCTGGCCGGCGCGCCAGGCCAGCAGCGCGCAGCCACGGGAGCCCCCGGC
 GTCGGCAGGCGCCGTCCCTGCCCTGCCGGGGCGCTGGGCTCGGACACCGTGCAGCGCCAGGCGCGGCA
 CCCATTCGGCTTTGGCCAGGTGCCGACAACGGCGAGGTGGCCGTGGGGACAGCACGGGCATGGCC
 CGGGCCCCACCTCCGTCTCCAGCAACGGCACGGGGACTCCGCCTCTCGGTCTCGGCTTCGGCTTCG
 CCAGCACCTACCGCCAGCAGCCCTCTACCCGACAGTTCCTTACCCGAGGGCCCTTCGTAGCCCA
 GTACGAGAAGTACGACCCCGCTCGCGGACCTACGACCAGGGTTTCGTGTACTACCGGCCCGGGCGCGC
 GCGTGGGCGCGGGGGCGCGCGGCGTGGCTCGGCGGGGGTATCTACCCCTACCGCCCGGGCGCGCT
 ACGAGGAGTACGGCGGGCGGAAGAGTGCCTGAGTACCCGCTCAGGGCTTCTACCCGGCCCCGAGAG
 GCCCTACGTGCCGCCGCCCGCCGCCCGCCCGACGGCCTGGACCGCCGCTACTCGCACAGTCTGTACAGC
 GAGGGCACCCCGGCTTCGAGCAGGCTACCTGACCCCGGTCCCAGGGCGGCGCAGGCCATGGCGGAG
 ACCCACGCTGGGCTGGTACCCGCCCTACGCCAACCCGCCCGCCGAGGCGTACGGGCCCGCCGCGCGCT
 GGAGCCGCCCTACCTGCCGTGCGCAGCTCCGACACGCCCGCCCGGGTGGGAGCGGAACGGCGCGCAG
 CAGGGCCGCCCTCAGCGTGGCAGCGTGTACCGGCCAACCCAGAACGGCCCGGCTCCCTGACTTGGTCC
 CAGACCCCAACTATGTGCAAGCATCCACTTATGTGCAGAGAGCCACCTGTACTCCCTGCCGTGTGCTGC
 GGAGGAGAAGTGTCTGGCCAGCACAGCCTATGCCCTGAGGCCACCGACTACGATGTGGGGTGTACTG
 CGTTCGCCCGAGCGGTGAAGAACCAGGGCACAGCAGACTTCTCCCAACCGGCCACGGCACACCTGGG
 AGTGGCACAGTGCACACAGCATTACCACAGCATGGACGAGTTCAGCCACTACGACCTACTGGATGCAGC
 CACAGGCAAGAAGGTGGCCGAGGGCCACAAGGCCAGTTTCTGCCTGGAGGACAGCACCTGTGACTTCGGC
 AACCTCAAGCGCTATGCATGCACCTCTCATACCCAGGGCCTGAGCCAGGCTGCTATGACACCTACAATG
 CGGACATCGACTGCCAGTGGATCGACATAACCGACGTGCAGCCTGGGAATACATCTCAAGGTGCACGT
 GAACCCAAAGTATATTGTTTTGGAGTCTGACTTACCAACAACGTGGTGGATGCAACATCACTACACA
 GGTGCTACGTTTCTGCAACAACTGCAAAATTGTCCAATCC

ACGCGTACGGCGCCGCTCGAGCAGAACTCATCTCAGAAGAGGATCTGGCAGCAAATGATATCCTGGATT
 ACAAGGATGACGACGATAAGGTTTAA

Protein Sequence:

>RC209830 representing NM_005576
 Red=Cloning site Green=Tags(s)

MALARGSRQLGALVWGACL CVL VHGQQAQPGQSDPARWRQLIQWENNGQVYSLLSNGSEYVPAGPQRSE
 SSSRVLLAGAPQAQRRSHGSPRRRQAPSLPLPGRVGS DTVRGQARHPFGFQVDPDNWREVAVGDSTGMA
 RARTSVSQRRHGDSSASSASAFASYRQPSYPQFPYQAPFVSQYENYDPASRTYDQGFVYYRPAGG
 GVGAGAAAVASAGVIYPYQPRARYEYGGGEELPEYPPQGFYPAPERPVVPPPPPDGLDRRYSLSLYS
 EGTPGFEQAYPDGPAAQAHGDPRLGWYPPYANPPPEAYGPPRALPPYLPVRS DTPPPGGERNGAQ
 QGRLSVGSVYRPNQNGRGLPDLVPDPNYVQASTYVQRAHLYSLRCAAEEKCLASTAYAPEATDYDVRVLL
 RFPQRVKNQGTADFLPNRPRHTWEWHSCHQHYHSMDEF SHYDL LDAATGKKVAEGHKASFLEDSTCDFG
 NLKRYACTSHTQGLSPGCDYTNADIDCQWIDITDVQPGNYILKVHVNPKYIVLESDF TNNVRCNIHYT
 GRYVSATNCKIVQS

TRTRPLEQKLISEEDLAANDILDYKDDDDKV

Chromatograms:

https://cdn.origene.com/chromatograms/mg2860_b07.zip

Restriction Sites:

Sgfl-Mlul

Cloning Scheme:


ACCN: NM_005576

ORF Size: 1722 bp

OTI Disclaimer: Due to the inherent nature of this plasmid, standard methods to replicate additional amounts of DNA in E. coli are highly likely to result in mutations and/or rearrangements. Therefore, OriGene does not guarantee the capability to replicate this plasmid DNA. Additional amounts of DNA can be purchased from OriGene with batch-specific, full-sequence verification at a reduced cost. Please contact our customer care team at custsupport@origene.com or by calling 301.340.3188 option 3 for pricing and delivery.

The molecular sequence of this clone aligns with the gene accession number as a point of reference only. However, individual transcript sequences of the same gene can differ through naturally occurring variations (e.g. polymorphisms), each with its own valid existence. This clone is substantially in agreement with the reference, but a complete review of all prevailing variants is recommended prior to use. [More info](#)

OTI Annotation: This clone was engineered to express the complete ORF with an expression tag. Expression varies depending on the nature of the gene.

Components: The ORF clone is ion-exchange column purified and shipped in a 2D barcoded Matrix tube containing 10ug of transfection-ready, dried plasmid DNA (reconstitute with 100 ul of water).

- Reconstitution Method:**
1. Centrifuge at 5,000xg for 5min.
 2. Carefully open the tube and add 100ul of sterile water to dissolve the DNA.
 3. Close the tube and incubate for 10 minutes at room temperature.
 4. Briefly vortex the tube and then do a quick spin (less than 5000xg) to concentrate the liquid at the bottom.
 5. Store the suspended plasmid at -20°C. The DNA is stable for at least one year from date of shipping when stored at -20°C.

RefSeq: [NM_005576.4](#)

RefSeq Size: 2361 bp

RefSeq ORF: 1725 bp

Locus ID: 4016

UniProt ID: [Q08397](#)

Cytogenetics: 15q24.1

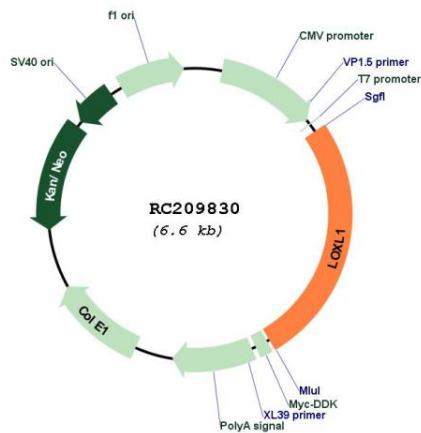
Domains: Lysyl_oxidase

Protein Families: Secreted Protein

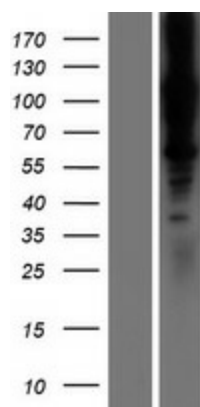
MW: 63.17 kDa

Gene Summary: This gene encodes a member of the lysyl oxidase family of proteins. The prototypic member of the family is essential to the biogenesis of connective tissue, encoding an extracellular copper-dependent amine oxidase that catalyzes the first step in the formation of crosslinks in collagen and elastin. The encoded preproprotein is proteolytically processed to generate the mature enzyme. A highly conserved amino acid sequence at the C-terminus end appears to be sufficient for amine oxidase activity, suggesting that each family member may retain this function. The N-terminus is poorly conserved and may impart additional roles in developmental regulation, senescence, tumor suppression, cell growth control, and chemotaxis to each member of the family. Mutations in this gene are associated with exfoliation syndrome. [provided by RefSeq, Jan 2016]

Product images:



Circular map for RC209830



Western blot validation of overexpression lysate (Cat# [LY417212]) using anti-DDK antibody (Cat# [TA50011-100]). Left: Cell lysates from untransfected HEK293T cells; Right: Cell lysates from HEK293T cells transfected with RC209830 using transfection reagent MegaTran 2.0 (Cat# [TT210002]).