

Product datasheet for RC209829

PSMD14 (NM_005805) Human Tagged ORF Clone

Product data:

Product Type:	Expression Plasmids
Product Name:	PSMD14 (NM_005805) Human Tagged ORF Clone
Tag:	Myc-DDK
Symbol:	PSMD14
Synonyms:	PAD1; POH1; RPN11
Mammalian Cell Selection:	Neomycin
Vector:	pCMV6-Entry (PS100001)
E. coli Selection:	Kanamycin (25 ug/mL)
ORF Nucleotide Sequence:	>RC209829 ORF sequence Red=Cloning site Blue=ORF Green=Tags(s)

TTTTGTAATACGACTCACTATAGGGCGGCCGGAATTCGTCGACTGGATCCGGTACCGAGGAGATCTGCC
GCC**CGATCGCC**

ATGGACAGACTTCTTAGACTTGGAGGAGGTATGCCTGGACTGGGCCAGGGCCACCTACAGATGCTCCTG
CAGTGGACACAGCAGAACAAGTCTATATCTCTCCCTGGCACTGTTAAAAATGTTAAACATGGCCGTGC
TGGAGTTCCAATGGAAGTTATGGGTTTGTGCTTGGAGAATTTGTTGATGATTATACCGTCAGAGTGATT
GATGTGTTTGTATGCCACAGTCAGGAACAGGTGTCAGTGTGGAGGCAGTTGATCCAGTGTCCAAGCTA
AAATGTTGGATATGTTGAAGCAGACAGGAAGGCCGGAGATGGTTGTTGGTTGGTATCACAGTCACCCTGG
CTTTGGTTGTTGGCTTTCTGGTGTGGATATCAACTCAGCAGAGCTTTGAAGCCTGTGCGAGAGAGCT
GTGGCAGTGGTTGTGGATCCCATTACAGAGTGTAAAAGGAAAGGTTGTTATTGATGCCTTCAGATTGATCA
ATGCTAATATGATGGTCTTAGGACATGAACCAAGACAAACAACCTCGAATCTGGGTCACTTAAACAAGCC
ATCTATCCAGGCATTAATTCATGGACTAAACAGACATTACTCCATTACTATTAACATCGGAAAAAT
GAACTGGAACAGAAGATGTTGCTAAATTTGCATAAGAAGAGTTGGATGGAAGTTTGACACTTCAGGACT
ACAGTGAACATTGTAACACAATGAATCAGTGGTAAAGGAGATGTTGGAATTAGCCAAGAATTACAATAA
GGCTGTAGAAGAAGAAGATAAGATGACACCTGAACAGCTGGCAATAAAGAATGTTGGCAAGCAGGACCCC
AAACGTCATTTGGAGAACATGTGGATGTACTTATGACCTCAAATATTGTCCAGTGTGAGCAGCTATGT
TGGATACTGTCGTATTTAAA

ACGCGTACGCGGCCGCTCGAGCAGAACTCATCTCAGAAGAGGATCTGGCAGCAAATGATATCCTGGATT
ACAAGGATGACGACGATAAGGTTTAA



[View online »](#)

Protein Sequence: >RC209829 protein sequence
Red=Cloning site Green=Tags(s)

MDRLRLGGMPGLGQPPTDAPVDTAEQVYISSLALLKMLKHGRAGVPMVMGLMLGEFVDDYTVRVI
 DVFAMPQSGTGVSVEAVDPVFQAKMLDMLKQTRPEMVGWYHSHPGFGCWLSGVDINTQSFSEALSER
 VAVVVDPIQSVKGVVIDAFRLINANMMVLGHEPRQTTNLGHLNKPISIQALIHGLNRHYYSITINRKN
 ELEQKMLLNHLHKKSWMEGLTLQDYSEHCKHNESVVKEMLELAKNYNKAVEEEDKMTPEQLAIKNVGKQDP
 KRHLEEHVDVLMTSNIVQCLAAMLDTVVF

TRTRPLEQKLISEEDLAANDILDYKDDDDKV

Chromatograms: https://cdn.origene.com/chromatograms/mk6142_g05.zip

Restriction Sites: SgfI-MluI

Cloning Scheme:



ACCN: NM_005805

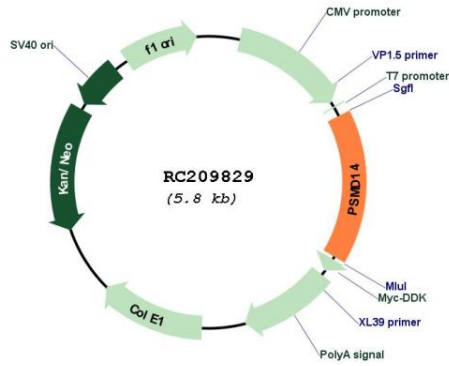
ORF Size: 930 bp

OTI Disclaimer: Due to the inherent nature of this plasmid, standard methods to replicate additional amounts of DNA in E. coli are highly likely to result in mutations and/or rearrangements. Therefore, OriGene does not guarantee the capability to replicate this plasmid DNA. Additional amounts of DNA can be purchased from OriGene with batch-specific, full-sequence verification at a reduced cost. Please contact our customer care team at custsupport@origene.com or by calling 301.340.3188 option 3 for pricing and delivery.

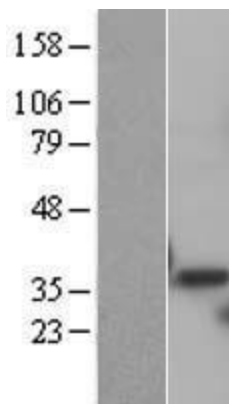
The molecular sequence of this clone aligns with the gene accession number as a point of reference only. However, individual transcript sequences of the same gene can differ through naturally occurring variations (e.g. polymorphisms), each with its own valid existence. This clone is substantially in agreement with the reference, but a complete review of all prevailing variants is recommended prior to use. [More info](#)

OTI Annotation:	This clone was engineered to express the complete ORF with an expression tag. Expression varies depending on the nature of the gene.
Components:	The ORF clone is ion-exchange column purified and shipped in a 2D barcoded Matrix tube containing 10ug of transfection-ready, dried plasmid DNA (reconstitute with 100 ul of water).
Reconstitution Method:	<ol style="list-style-type: none">1. Centrifuge at 5,000xg for 5min.2. Carefully open the tube and add 100ul of sterile water to dissolve the DNA.3. Close the tube and incubate for 10 minutes at room temperature.4. Briefly vortex the tube and then do a quick spin (less than 5000xg) to concentrate the liquid at the bottom.5. Store the suspended plasmid at -20°C. The DNA is stable for at least one year from date of shipping when stored at -20°C.
RefSeq:	NM_005805.3
RefSeq Size:	1734 bp
RefSeq ORF:	933 bp
Locus ID:	10213
UniProt ID:	O00487
Cytogenetics:	2q24.2
Domains:	JAB_MPN
Protein Families:	Druggable Genome, Protease
Protein Pathways:	Proteasome
MW:	34.6 kDa
Gene Summary:	This gene encodes a component of the 26S proteasome. The 26S proteasome is a large multiprotein complex that catalyzes the degradation of ubiquitinated intracellular proteins. The encoded protein is a component of the 19S regulatory cap complex of the 26S proteasome and mediates substrate deubiquitination. A pseudogene of this gene is also located on the long arm of chromosome 2. [provided by RefSeq, Feb 2012]

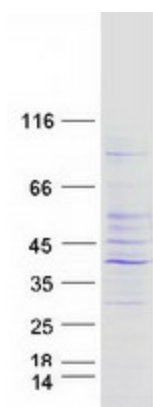
Product images:



Circular map for RC209829



Western blot validation of overexpression lysate (Cat# [LY401764]) using anti-DDK antibody (Cat# [TA50011-100]). Left: Cell lysates from untransfected HEK293T cells; Right: Cell lysates from HEK293T cells transfected with RC209829 using transfection reagent MegaTran 2.0 (Cat# [TT210002]).



Coomassie blue staining of purified PSMD14 protein (Cat# [TP309829]). The protein was produced from HEK293T cells transfected with PSMD14 cDNA clone (Cat# RC209829) using MegaTran 2.0 (Cat# [TT210002]).