

Product datasheet for **RC209826**

LRRN5 (LRRN2) (NM_006338) Human Tagged ORF Clone

Product data:

Product Type:	Expression Plasmids
Product Name:	LRRN5 (LRRN2) (NM_006338) Human Tagged ORF Clone
Tag:	Myc-DDK
Symbol:	LRRN5
Synonyms:	FIGLER7; GAC1; LRANK1; LRRN5
Mammalian Cell Selection:	Neomycin
Vector:	pCMV6-Entry (PS100001)
E. coli Selection:	Kanamycin (25 ug/mL)



[View online »](#)

**ORF Nucleotide
Sequence:**

>RC209826 ORF sequence
 Red=Cloning site Blue=ORF Green=Tags(s)

TTTTGTAATACGACTCACTATAGGGCGGCCGGGAATTCGTCGACTGGATCCGGTACCGAGGAGATCTGCC
 GCC**CGGATCGCC**

ATGAGGCTTCTCGTGGCCCCACTTTGCTAGCTTGGGTGGCTGGTGCCACTGCCGCTGTGCCGTGGTAC
 CCTGGCATGTTCCCTGCCCCCTCAGTGTGCCTGCCAGATCCGGCCCTGGTATACGCCCCGCTCGTCCTA
 CCGCGAGGCTACCACTGTGGACTGCAATGACCTATTCTGACGGCAGTCCCCCGGCACTCCCCGCAGGC
 ACACAGACCCTGCTCCTGCAGAGCAACAGCATTGTCCGTGTGGACCAGAGTGAGCTGGGCTACCTGGCCA
 ATCTCACAGAGCTGGACCTGTCCAGAACAGCTTTTCGGATGCCCGAGACTGTGATTTCCATGCCCTGCC
 CCAGCTGCTGAGCCTGCACCTAGAGGAGAACCAGCTGACCCGGCTGGAGGACCACAGCTTTGACAGGGCTG
 GCCAGCCTACAGGAACCTATCTCAACCACAACCAGCTTACCGCATCGCCCCAGGGCCTTTTCTGGCC
 TCAGCAACTTGTGCGGCTGCACCTCAACTCCAACCTCCTGAGGGCCATTGACAGCCGCTGGTTTGAAT
 GCTGCCAACTTGGAGATACTCATGATTGGCGGCAACAAGGTAGATGCCATCCTGGACATGAACTCCGG
 CCCTGGCCAACCTGCGTAGCCTGGTGTAGCAGGCATGAACCTGCGGGGAGATCTCCGACTATGCCCTGG
 AGGGGCTGCAAAGCCTGGAGAGCCTCTCCTTCTATGACAACCAGCTGGCCCGGGTGGCCAGGCGGGCACT
 GGAACAGGTGCCCGGGCTCAAGTTCCTAGACCTCAACAAGAACCCTCCAGCGGGTAGGGCCGGGGGAC
 TTTGCCAATGCTGCACCTTAAGGAGCTGGGACTGAACAATGAGGAGCTGGTCTCCATCGACAAGT
 TTGCCCTGGTGAACCTCCCCGAGCTGACCAAGCTGGACATACCAATAACCCACGGCTGTCTTCATCCA
 CCCCCGCGCTTCCACCCTGCCCCAGATGGAGACCCTCATGCTCAACAACAACGCTCTCAGTGCCTTG
 CACCAGCAGACGGCGGAGTCCCTGCCAACCTGCAGGAGGTAGGTCTCCACGGCAACCCCATCCGCTGTG
 ACTGTGTCATCCGCTGGGCCAATGCCACGGGCACCCGTGCCGTTTCATCGAGCCGAATCCACCCTGTG
 TCGGGAGCCTCCGGACCTCCAGCGCCTCCCGGTCCGTGAGGTGCCCTTCCGGGAGATGACGGACCCTGT
 TTGCCCTCATCTCCCCACGAAGCTTCCCCCAAGCCTCCAGGTAGCCAGTGGAGAGAGCATGGTGTCTGC
 ATTGCCGGGCACTGGCCGAACCCGAACCCGAGATCTACTGGGTCACTCCAGCTGGGCTTCGACTGACACC
 TGCCCATGCAGGCAGGAGGTACCGGGTGTACCCCGAGGGGACCCTGGAGCTGCGGAGGGTACAGCAGAA
 GAGGCGGGGCTATACACCTGTGTGGCCAGAACCTGGTGGGGCTGACACTAAGACGGTTAGTGTGGTTG
 TGGGCGGTCTCCTCCAGCCAGGCAGGGACGAAGGACAGGGGCTGGAGCTCCGGGTGCAGGAGACCCA
 CCCCTATCACATCTGCTATCTTGGGTACCCCAACACAGTGTCCACCAACCTCACCTGGTCCAGT
 GCCTCCTCCCTCCGGGGCAGGGGGCCACAGCTTGGCCCGCCTGCCTCGGGGAACCCACAGCTACAACA
 TTACCCGCTCCTCAGGCCACGGAGTACTGGGCTGCCTGCAAGTGGCCTTTGCTGATGCCACACCCA
 GTTGGCTTGTGTATGGCCAGGACCAAAGAGGCCACTTCTTGCCACAGAGCCTTAGGGGACCGTCTGGG
 CTCATTGCCATCCTGGCTCTCGCTGTCTTCTCCTGGCAGCTGGGCTAGCGGCCACCTTGGCACAGGCC
 AACCCAGGAAGGGTGTGGGTGGGAGGGCCCTCTCCCTCCAGCCTGGGCTTTCTGGGGCTGGAGTCCCC
 TTCTGTCCGGTGTGTCTGCTCCCTCGTCTGCCCTGGAATCCAGGGAGGAAGCTGCCAGATCCTCA
 GAAGGGGAGACTGTTGCCACCATTGTCTAAAATTCT

ACGCGTACGCGGCCGCTCGAGCAGAACTCATCTCAGAAGAGGATCTGGCAGCAAATGATATCCTGGATT
 ACAAGGATGACGACGATAAGGTTTAA

Protein Sequence: >RC209826 protein sequence
 Red=Cloning site Green=Tags(s)

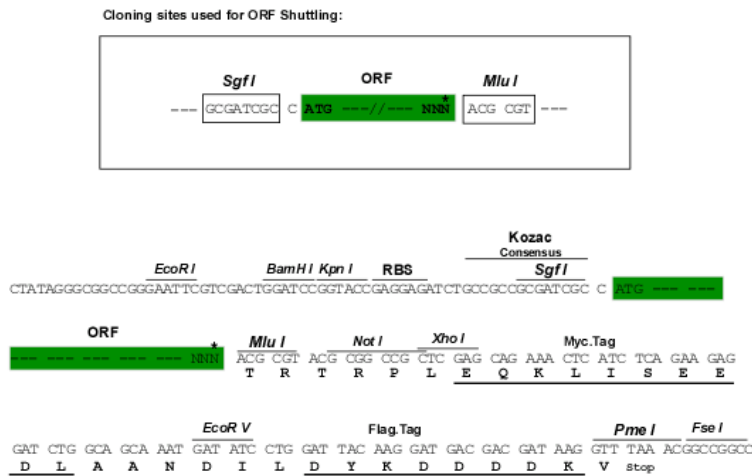
```
MRLLVAPLLLAWVAGATAAVPVVPHVPCPPQCACQIRPWYTPRSSYREATTVDCNDLFLTAVPPALPAG
TQTLQLQSNIVRVDQSELGYLANL TELDL SQNSFSDARDCDFHALPQLLSLHLEENQLTRLEDHSFAGL
ASLQELYLNHNQLYRIAPRAFSGLSNLLRLHLNSNLLRAIDSRWFEMLPNLEILMIGGNKVDAILDMMNFR
PLANLRSLVLAGMNLREISDYALEGLQSLESLFYDNQLARVPRRALEQVPLKFLDLNKNPLQRVGPGD
FANMLHLKELGLNMEELVSIKDFALVNLPELTKLDITNNPRLSF IHPRAFHHLPMETLMLNNALSAL
HQQTAESLPNLQEVLHGNI RCDCVIRWANATGTRVRFIEPQSTLCAEPPDLQRLPVREVPFREMTHC
LPLISPRSFPPSLQVASGESMVLHCRALAEPEPEIYWVTPAGLRLLTPAHAGRRYRVYPEGTLELRRVTAE
EAGLYTCVAQNLVGADTKTVSVVVGRRLLQPGRDEGQGLELRVQETHPHYILLSWVTPPNTVSTNLTWSS
ASSLRGQGATALARLPRGTHSYNITRLLQATEYWACLQVAFADAHTQLACVWARTKEATSCHRALGDRPG
LIATILAVLLLLAAGLAHLGTGQPRKGVGRRPLPPAWAFWGWSPPSVRVVSAPLVLPWNPGRKLPRSS
EGETLLPPLSQNS
```

TRTRPLEQKLI SEEDLAANDILDYKDDDDKV

Chromatograms: https://cdn.origene.com/chromatograms/mk6537_f02.zip

Restriction Sites: SgfI-MluI

Cloning Scheme:



* The last codon before the Stop codon of the ORF

ACCN: NM_006338

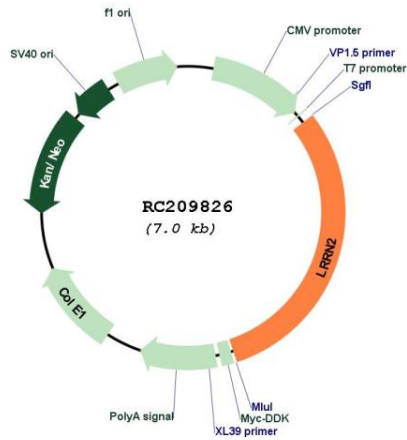
ORF Size: 2139 bp

OTI Disclaimer: The molecular sequence of this clone aligns with the gene accession number as a point of reference only. However, individual transcript sequences of the same gene can differ through naturally occurring variations (e.g. polymorphisms), each with its own valid existence. This clone is substantially in agreement with the reference, but a complete review of all prevailing variants is recommended prior to use. [More info](#)

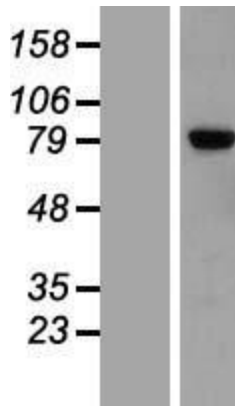
OTI Annotation: This clone was engineered to express the complete ORF with an expression tag. Expression varies depending on the nature of the gene.

Components:	The ORF clone is ion-exchange column purified and shipped in a 2D barcoded Matrix tube containing 10ug of transfection-ready, dried plasmid DNA (reconstitute with 100 ul of water).
Reconstitution Method:	<ol style="list-style-type: none">1. Centrifuge at 5,000xg for 5min.2. Carefully open the tube and add 100ul of sterile water to dissolve the DNA.3. Close the tube and incubate for 10 minutes at room temperature.4. Briefly vortex the tube and then do a quick spin (less than 5000xg) to concentrate the liquid at the bottom.5. Store the suspended plasmid at -20°C. The DNA is stable for at least one year from date of shipping when stored at -20°C.
RefSeq:	NM_006338.3
RefSeq Size:	3227 bp
RefSeq ORF:	2142 bp
Locus ID:	10446
UniProt ID:	O75325
Cytogenetics:	1q32.1
Domains:	LRRNT, LRRCT, LRR, ig, LRR_TYP, IGc2, IG, LRR_SD22, LRR_PS
Protein Families:	Druggable Genome, Transmembrane
MW:	78.9 kDa
Gene Summary:	The protein encoded by this gene belongs to the leucine-rich repeat superfamily. This gene was found to be amplified and overexpressed in malignant gliomas. The encoded protein has homology with other proteins that function as cell-adhesion molecules or as signal transduction receptors and is a candidate for the target gene in the 1q32.1 amplicon in malignant gliomas. Two alternatively spliced transcript variants encoding the same protein have been described for this gene. [provided by RefSeq, Jul 2008]

Product images:



Circular map for RC209826



Western blot validation of overexpression lysate (Cat# [LY416725]) using anti-DDK antibody (Cat# [TA50011-100]). Left: Cell lysates from untransfected HEK293T cells; Right: Cell lysates from HEK293T cells transfected with RC209826 using transfection reagent MegaTran 2.0 (Cat# [TT210002]).