

Product datasheet for **RC209817**

MKLN1 (NM_013255) Human Tagged ORF Clone

Product data:

Product Type:	Expression Plasmids
Product Name:	MKLN1 (NM_013255) Human Tagged ORF Clone
Tag:	Myc-DDK
Symbol:	MKLN1
Synonyms:	TWA2
Mammalian Cell Selection:	Neomycin
Vector:	pCMV6-Entry (PS100001)
E. coli Selection:	Kanamycin (25 ug/mL)



[View online »](#)

ORF Nucleotide
Sequence:

>RC209817 ORF sequence
Red=Cloning site Blue=ORF Green=Tags(s)

TTTTGTAATACGACTCACTATAGGGCGGCCGGAATTCGTCGACTGGATCCGGTACCGAGGAGATCTGCC
GCC**CGCATCGCC**

ATGGCGGCTGGCGGAGCTGTCGCTGCGGCGCCGAGTGCCGGCTTCTCCCCTACGCGCTACACAAGTGGAG
GCTCCTTTTCTCCACCTACCTTCCCGAGAACATTTTAGTGGACAAACCAATGACCAATCTCAAGATG
GTCTTCAGAGAGCAACTATCCTCCCACTACTTATTCTAAAGCTCGAAAGGCCTGCTATAGTTCAGAAT
ATCACATTTGGAAAATAGAGAAAACATGTTTGCAATTTGAAGAAATTTAAAGCTTTGGTGGAAATGA
ATGAAGAAAATAGACAGAGCTGTTGTCCAGTGGCTTAAAGAATGATTATAACAAAGAAACATTCACCTT
GAAGCATAAAAATTGATGAACAGATGTTCCCTTGTGCGATTCAAATAAGTTCCTCTTGTCTGGGGA
CCCAGCTTAACTTTAGCATCTGGTATGTTGAAGTGTGATGATCCTGATATAGTACAACCTT
GTCTCAACTGGTATAGCAAGTACCGTGAACAGGAAGCTATTCGCCTTTGCCTAAAACACTTCAGACAACA
CAACTATACAGAAGCTTTTGGAGTCACTGCAAAAAGAAAACCAAGATTGCACTGGAACATCCCATGTTAACA
GATATTCATGACAAGCTGGTGTGAAGGGTGATTTTATGCTTGGCAAGAGTTGATTGAAAAGGCTGTA
ATGATGGCTTGTCAATCAGTATATCAGTCAACAGGAATATAAGCCACGATGGAGTCAAATCATTCCCAA
AAGTACCAAAGGTGATGGGAAGATAACCGTCCAGGAATGAGAGGAGGCCATCAGATGGTTATTGATGTT
CAACAGAGACTGTTATTTGTTGGTGGCTGGGATGGAACACAAGATCTTGCTGACTTCTGGGCGTACA
GTGTGAAGGAGAACCAGTGGACATGTATCTAGAGACTGAAAAGAGAATGGTCTAGTGCCAGATC
GTGTCATAAAATGTGATTGATATTCAACGGAGGCAAACTACACATTGGGGCGTTACTTGGATTCCTCT
TAAGTGAAGTACTGCTGCTGATGGAGGGCCGAAATTTGGTGTGATCATCAGATGTGATGGAGTACAG
AAAACATATGATCTACACTTTTGGTGGTAGAATTTGACTTGAATGGCAGCGTAGATGACAGCAGAGCC
AGTGAACCACAATTCAGTGGCTTGTGCTTCAACTGTCAATGTCAAACCTGGAACCTTCTTAGAGAGG
ACTCCTGTAATGCTGGGCTGAGGACATCCAGTCTCGAATAGGACTGATGTTATTCCACTCAAAAAA
TCGTTGCTTATATGATTTGGTGGCCAGCGATCAAAGACCTATTTGAATGATTTCTTTAGTTATGATGTG
GACTCTGATCATGTAGACATAATATCAGATGGCACCAAGAAAGACTCTGGGATGGTTCCAATGACAGGAT
TTACACAGAGAGCAACTATTGATCCAGAACTGAACGAAATACACGCTTATCTGGACTCAGCAAAGATAA
GGAAAAGAGGGAAGAAAATGTTAGAAAATCATTCTGGATTTATGACATTGTGAGGAATAGTTGGTCTTGT
GTCTATAAGAATGATCAAGCTGCAAAGGATAATCCAATAAAAGTCTTCAGGAAGAAGAACCATGTCCAA
GGTTTGCCCATCAGCTTGTATACGATGAGCTACACAAGGTTCACTTATTTGGTGGGAATCCAGGAAA
ATCTTGCTCTCAAAGATGAGATTAGATGACTTCTGGTCACTGAAGTTGTGTAGACCTTCAAAGATTAT
TACTGAGGCATTGCAAGTACCTCATAAGAAAACAGGTTTGAAGAAAAGGCCAAGTGGATCCCTTA
GTGCTCTGAAATATTTACAAAATGATCTTTATATAACTGTGGATCATTACAGCCAGAAAGAGACAAAAGA
GTTTCAGCTCCTGGCATCAGCTCTATTCAAATCTGGTTCAGATTTTACAGCTCTGGGCTTTTCTGATGTG
GATCACACCTATGCTCAAAGAATCAGCTCTTTGACACCTTAGTAAATTTCTTCTGACAGCATGACTC
CTCCTAAAGGCAACCTGGTAGACCTCATCACACTG

ACGCGTACGCGGCGCTCGAGCAGAACTCATCTCAGAAGAGGATCTGGCAGCAAATGATATCCTGGATT
ACAAGGATGACGACGATAAGGTTTAA

Protein Sequence: >RC209817 protein sequence
Red=Cloning site Green=Tags(s)

MAAGGAVAAAPECRLLPYALHKWSSFSTYLPENILVDPKNDQSSRWSESNYPPQYLILKLERPAIVQN
 ITFGKYEKTHVCNLKFKVFGGMNEENMTELLSSGLKNDYNKETFLLKHKIDEQMFCRFIKIVPLLSWG
 PSFNFSIYWVELSGIDDPDIVQPCLNWYSKYREQEAIRLCLKHFRQHNYTEAFESLQKTKIALEHPMLT
 DIHDKLVLKGDFDACEELIEKAVNDGLFNQYISQQEYKPRWSQIIPKSTKGDGEDNRPGRGGHQMVIDV
 QTETVYLVFGWDGTQDLADFWAYSVKENQWTCISRDTEKENGPSARSCHKMCIDIQRRQIYTLGRYLDSS
 VRNSKSLKSDFYRYDIDTNTWMLLSEDTAADGGPKLVFDHQMCMDSEKHMITYFGGRILTCNGSVDDSR
 SEPQFSGLFAFNCQCQTWKLLEDSCNAGPEDIQSRIGHCMLFHSKNRCLYVFGGQRSKTYLNDFFSYDV
 DSDHVDIISDGTKKDSGMVPMGTGFTQRTIDPELNEIHVLSGLSKDKEKREENVNSFWIYDIVRNSWSC
 VYKNDQAAKDNPTKSLQEEPCPRFAHQLVYDELHKVHYLVFGGNPGKSCSPKMRLLDFWSLKLCRPSKDY
 LLRHCKYLIRKHRFEKAQVDPLSALKYLQNDLYITVDHSDPEETKEFQLLASALFKSGSDFTALGFSDV
 DHTYAQRTQLFDLTVNFFPDSMTPPKGNLVDLITL

TRTRPLEQKLISEEDLANDILDYKDDDDKV

Chromatograms: https://cdn.origene.com/chromatograms/mk6693_g11.zip

Restriction Sites: SgfI-MluI

Cloning Scheme:

Cloning sites used for ORF Shuttling:



* The last codon before the Stop codon of the ORF

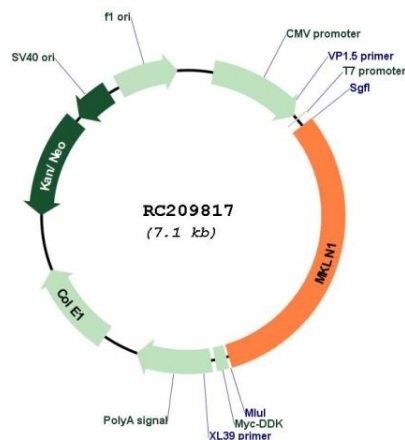
ACCN: NM_013255

ORF Size: 2205 bp

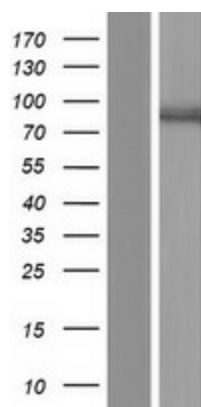
OTI Disclaimer: The molecular sequence of this clone aligns with the gene accession number as a point of reference only. However, individual transcript sequences of the same gene can differ through naturally occurring variations (e.g. polymorphisms), each with its own valid existence. This clone is substantially in agreement with the reference, but a complete review of all prevailing variants is recommended prior to use. [More info](#)

OTI Annotation: This clone was engineered to express the complete ORF with an expression tag. Expression varies depending on the nature of the gene.

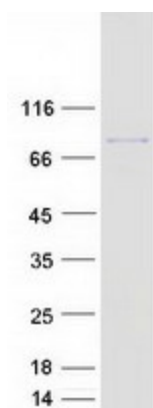
Components:	The ORF clone is ion-exchange column purified and shipped in a 2D barcoded Matrix tube containing 10ug of transfection-ready, dried plasmid DNA (reconstitute with 100 ul of water).
Reconstitution Method:	<ol style="list-style-type: none"> 1. Centrifuge at 5,000xg for 5min. 2. Carefully open the tube and add 100ul of sterile water to dissolve the DNA. 3. Close the tube and incubate for 10 minutes at room temperature. 4. Briefly vortex the tube and then do a quick spin (less than 5000xg) to concentrate the liquid at the bottom. 5. Store the suspended plasmid at -20°C. The DNA is stable for at least one year from date of shipping when stored at -20°C.
RefSeq:	<u>NM_013255.5</u>
RefSeq Size:	11194 bp
RefSeq ORF:	2208 bp
Locus ID:	4289
UniProt ID:	<u>Q9UL63</u>
Cytogenetics:	7q32.3
Domains:	LisH, Kelch
MW:	84.8 kDa
Gene Summary:	Muskelin is an intracellular protein that acts as a mediator of cell spreading and cytoskeletal responses to the extracellular matrix component thrombospondin I (MIM 188060) (Adams et al., 1998 [PubMed 9724633]).[supplied by OMIM, Mar 2008]

Product images:


Circular map for RC209817



Western blot validation of overexpression lysate (Cat# [LY415714]) using anti-DDK antibody (Cat# [TA50011-100]). Left: Cell lysates from untransfected HEK293T cells; Right: Cell lysates from HEK293T cells transfected with RC209817 using transfection reagent MegaTran 2.0 (Cat# [TT210002]).



Coomassie blue staining of purified MKLN1 protein (Cat# [TP309817]). The protein was produced from HEK293T cells transfected with MKLN1 cDNA clone (Cat# RC209817) using MegaTran 2.0 (Cat# [TT210002]).