

## Product datasheet for **RC209811**

### FAM156A (NM\_014138) Human Tagged ORF Clone

#### Product data:

Product Type:	Expression Plasmids
Product Name:	FAM156A (NM_014138) Human Tagged ORF Clone
Tag:	Myc-DDK
Symbol:	FAM156A
Synonyms:	PRO0659; TMEM29
Mammalian Cell Selection:	Neomycin
Vector:	pCMV6-Entry (PS100001)
E. coli Selection:	Kanamycin (25 ug/mL)
ORF Nucleotide Sequence:	>RC209811 ORF sequence Red=Cloning site Blue=ORF Green=Tags(s)

TTTTGTAATACGACTCACTATAGGGCGCCGGAATTCGTCGACTGGATCCGGTACCGAGGAGATCTGCC  
GCC**CGATCGCC**

ATGGATCCACTCCAGAAACGGAATCCAGCATCGCCTTCCAAATCTTCCCGATGACAGCTGCAGAGACTT  
CCCAGGAAGGTCCAGCGCCCTCTCAGCCTTCGTAAGCAGCCGATGATGGCCTCAGTAACCTGAG  
CCCCGGTCCTGGCCACAGCCAGGCCGTGCCTCTCCAGAGGGGCTGCTCCACCAGCGGTACAGAGAGGAG  
AAGACCCTGGAAGAGCGCGGTGGGAGAGGCTGGAGTTCTTCAGAGGAAGAAAGCATTCTCGGCATG  
TGAGGAGGAGACACCGCATCACATGGCCCCTATGCTGTTGGGAGGGAAGCCAGAATCTCCCCATTAGG  
TGACAGAAGTCAGAATCGATTCCAATGTGAATGTCGATACTGCCAGAGCCACAGGCCGAATCTTTCTGGG  
ATCCCTGGGGAGAGTAACAGGGCCCACATCCCTCCTCCTGGGAGACGCTGGTGCAGGGCCTCAGTGGCT  
TGACTCTCAGCCTAGGCACCAACAGCCCGGCCCTCTGCCTGAAGCGGCACTCCAGCCACAGGAGACAGA  
GGAGAAGCGCCAGCGAGAGAGGCCAGCAGGAGAGCAAAATAATGTTTCAGAGGCTGCTCAAGCAGTGGTTA  
GAGGAAAAC

**ACGCGT**ACGCGGCCGCTCGAGCAGAACTCATCTCAGAAGAGGATCTGGCAGCAATGATATCCTGGATT  
ACAAGGATGACGACGATAAGGTTTAA



[View online »](#)

**Protein Sequence:** >RC209811 protein sequence  
Red=Cloning site Green=Tags(s)

MDPLQKRNPASPSKSSPMTAAETSQEGPAPSQPSYSEQPMGLSNLSPGPGHSQAVPLPEGLLHQRYREE  
 KTLEERRWERLEFLQRKKAFLRHVRRRRHRDHMAPYAVGREARISPLGDRSQNRFQCECRYCQSHRPNL  
 SGIPGESNRAPHSPSSWETLVQGLSGLTSLSLGTNQPGLPEAALQPQETEEKRQERQEQESKIMFQRL  
 LKQWLEEN

TRTRPLEQKLISEEDLAANDILDYKDDDDKV

**Chromatograms:** [https://cdn.origene.com/chromatograms/mk6721\\_b06.zip](https://cdn.origene.com/chromatograms/mk6721_b06.zip)

**Restriction Sites:** SgfI-MluI

**Cloning Scheme:**



**ACCN:** NM\_014138

**ORF Size:** 639 bp

**OTI Disclaimer:** The molecular sequence of this clone aligns with the gene accession number as a point of reference only. However, individual transcript sequences of the same gene can differ through naturally occurring variations (e.g. polymorphisms), each with its own valid existence. This clone is substantially in agreement with the reference, but a complete review of all prevailing variants is recommended prior to use. [More info](#)

**OTI Annotation:** This clone was engineered to express the complete ORF with an expression tag. Expression varies depending on the nature of the gene.

**Components:** The ORF clone is ion-exchange column purified and shipped in a 2D barcoded Matrix tube containing 10ug of transfection-ready, dried plasmid DNA (reconstitute with 100 ul of water).

**Reconstitution Method:**

1. Centrifuge at 5,000xg for 5min.
2. Carefully open the tube and add 100ul of sterile water to dissolve the DNA.
3. Close the tube and incubate for 10 minutes at room temperature.
4. Briefly vortex the tube and then do a quick spin (less than 5000xg) to concentrate the liquid at the bottom.
5. Store the suspended plasmid at -20°C. The DNA is stable for at least one year from date of shipping when stored at -20°C.

**RefSeq:** [NM\\_014138.4](#)

**RefSeq Size:** 2248 bp

**RefSeq ORF:** 642 bp

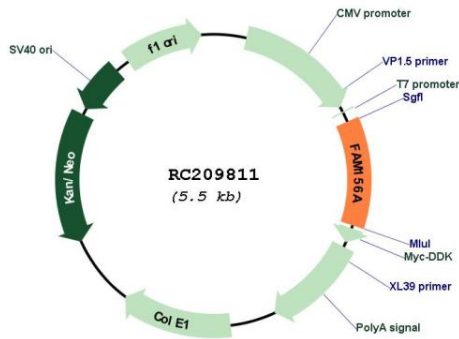
**Locus ID:** 29057

**UniProt ID:** [Q8NDB6](#)

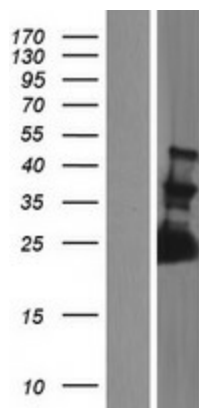
**Cytogenetics:** Xp11.22

**MW:** 24.4 kDa

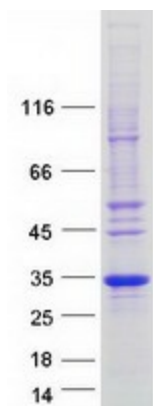
**Product images:**



Circular map for RC209811



Western blot validation of overexpression lysate (Cat# [LY415487]) using anti-DDK antibody (Cat# [TA50011-100]). Left: Cell lysates from untransfected HEK293T cells; Right: Cell lysates from HEK293T cells transfected with RC209811 using transfection reagent MegaTran 2.0 (Cat# [TT210002]).



Coomassie blue staining of purified FAM156A protein (Cat# [TP309811]). The protein was produced from HEK293T cells transfected with FAM156A cDNA clone (Cat# RC209811) using MegaTran 2.0 (Cat# [TT210002]).