

Product datasheet for **RC209805**

HECA (NM_016217) Human Tagged ORF Clone

Product data:

Product Type:	Expression Plasmids
Product Name:	HECA (NM_016217) Human Tagged ORF Clone
Tag:	Myc-DDK
Symbol:	HECA
Synonyms:	dJ225E12.1; HDC; HDCL; HHDC
Mammalian Cell Selection:	Neomycin
Vector:	pCMV6-Entry (PS100001)
E. coli Selection:	Kanamycin (25 ug/mL)



[View online »](#)

ORF Nucleotide Sequence:

>RC209805 representing NM_016217
 Red=Cloning site Blue=ORF Green=Tags(s)

TTTTGTAATACGACTCACTATAGGGCGGCCGGGAATTCGTCGACTGGATCCGGTACCGAGGAGATCTGCC
 GCC**CGGATCGCC**

ATGCCAACCCCAAAAACAGCAAAGGCGGCCGCAAAAACAAGCGCGCAACAGCAGCGGCGACGAGCAGG
 AAAATGGAGCCGGGCCCTGGCAGCGCGGGCGCGCGGGAGCGCGGCCGGGGGGCCCTGGCGCGGC
 GGCCGGTTGCGGGGCGCGCGGGCGCGGCCGGCGCGGAGCGCGCGGGCGCGGAGGCGCGGGG
 ACTGGCGCCGGAACGCTGCGGCCCGCGGGGCTGCGGCCGCGGGCGATGCCAAAAACGAAGCCCAT
 GTGCCACTCCCCTGATCTGCAGCTTCGGTAGGCCGGTGGACCTGGAGAAGGACGACTACCAGAAGGTGGT
 GTGCAACAACGAGCACTGCCCTGCAGCACCTGGATGCACCTGCAGTCTTCTACGAGTGGGAGAGCAGC
 ATCCTCGTCCAGTTCACTGCATCGGCCGCGCGCAGCTGGAACGAGAAGCAATGCCGCCAGAATGT
 GGACAAAGAAGGGCTACGACCTGGCCTTCCGCTTCTGCTTGGCCGCTGTGGCCAGGGCCACTTGAAGAA
 GGACACAGACTGGTATCAGGTGAAGCGGATGCAGGACGAGAAAAAGAAGAAGTCTGGCTCCGAGAAGAAC
 ACAGGGAGGCCTCCTGGTGAAGCGCGGAGGAGGCAAAAAGTGCAGGCCCCAAATAAGCCCCAGAAAG
 GCCAAGCCACGACCTCCCCCGCCGCATTCCATGGACCGGCAGAACTCCAGGAGAAGGAGTGGGTGC
 CGCAGCCTACGGTGCCCGTTCCCGCGTGGCTCCCGGGCCAGTCCCACCCACGGGCTACTCCATCCTC
 TCTCTGCCCACTTACGCGGCCCGCTCCTCCAGATACCTCGGGGAGTTCTTAAAGAAGCCATCCATC
 TGGAGCCTCACAAGAAGGCCATGGCTGGGGCCATGTGTTAGAAATGCCCACTTTGATTACAGCCCTGC
 GGGTTGGCAGTTCACAGGGGGGACACTTCGACACCCCGTGCAGTTCCTTCGGCGGCTGGACCTCTCC
 GAACTCCTCACTCACATCCCAGGCATAAGCTGAACACTTCCACGTGCGCATGGAAGACGATGCCAAG
 TGGCCAGGGGAAGACTTGCAGGAGTTCACTTGGCCGCGCTCAGTGCCAGCCACAGAAACGTTGTTAAA
 CTGTGCCCTGTGCCACCGGGCGCTCCCGGTGTTGGAACAGTTCCTACTGGTGGATGGAACCTTTGTTCTA
 AGCCCGTCGAGACATGATGAGATCGAATATGATGTTTCTTGTACCTTCAAGGGAGACTCATGCATCTGT
 ATGCCGTGTGCGTGGACTGCCTGGAAGGGTTCACAAGATCATCTGCATCAAGTGAAGTACCGTGGGA
 TGGCAGCTGGCACCAGCTGGGCACTATGTACACCTACGACATCCTGGCTGCCTCTCCATGTTGTCAGGCC
 CGCCTGAACTGTAAGCACTGTGGAAAGCCGGTATCGACGTGAGGATCGGGATGCAGTACTTCTCCGAAT
 ATAGCAACGTCCAGCAGTGTCCACACTGTGGAACTGGACTACCACTTCGTGAAGCCATTTCTCCTCT
 CAAAGTTCTCGAAGCTTAT

ACGCGTACGCGGCCGCTCGAGCAGAACTCATCTCAGAAGAGGATCTGGCAGCAAATGATATCCTGGATT
 ACAAGGATGACGACGATAAGGTTTAA

Protein Sequence:

>RC209805 representing NM_016217
 Red=Cloning site Green=Tags(s)

MPNPKNSKGRKNKRANSSGDEQENGAGALAAAGAAGAAAGGALAAAAGCGAAAAGAPGAGGAAGAGGAG
 TGAANAAAAAGAAAAGDAKNEAPCATPLICSFGRPVLDLEKDDYQKVVNNEHCPCSTWMLQCIFYEWESS
 ILVQFNCIGRARSWNEKQCRQNMWTKKGYDLAFRFCSRCGQGHLLKDDTDWYQVKRMQDEKKKKSGSEKN
 TGRPPGEAAEEAKKCRPPNPKQKPSHDLPRRHSMRQNSQEKAVGAAAYGARSPGGSPGQSPPTGYSIL
 SPAHFSGPRSSRYLGEFLKNAIHLEPHKKAMAGGHVFRNAHFVDFYSPAGLAVHRGGHFDTPVQFLRRLDLS
 ELLTHIPRHLNLFHVRMEDDAQVQGEDLRKFLAALASHRNVNVCALCHRALPVFEQFPLVDGTLFL
 SPSRHDEIEYDVPCHLQGRMLHLYAVCVDCLEGVHKKIICIKCKSRWDGSHWQLGTMVYDILAASPCQA
 RLNCKHCGKPVIVRIGMQYFSEYSNVQQCPHCGNLDYHFVKPFSSFVLEAY

TRTRPLEQKLISEEDLAANDILDYKDDDDKV

Restriction Sites:

SgfI-MluI

Cloning Scheme:


ACCN: NM_016217

ORF Size: 1629 bp

OTI Disclaimer: Due to the inherent nature of this plasmid, standard methods to replicate additional amounts of DNA in E. coli are highly likely to result in mutations and/or rearrangements. Therefore, OriGene does not guarantee the capability to replicate this plasmid DNA. Additional amounts of DNA can be purchased from OriGene with batch-specific, full-sequence verification at a reduced cost. Please contact our customer care team at custsupport@origene.com or by calling 301.340.3188 option 3 for pricing and delivery.

The molecular sequence of this clone aligns with the gene accession number as a point of reference only. However, individual transcript sequences of the same gene can differ through naturally occurring variations (e.g. polymorphisms), each with its own valid existence. This clone is substantially in agreement with the reference, but a complete review of all prevailing variants is recommended prior to use. [More info](#)

OTI Annotation: This clone was engineered to express the complete ORF with an expression tag. Expression varies depending on the nature of the gene.

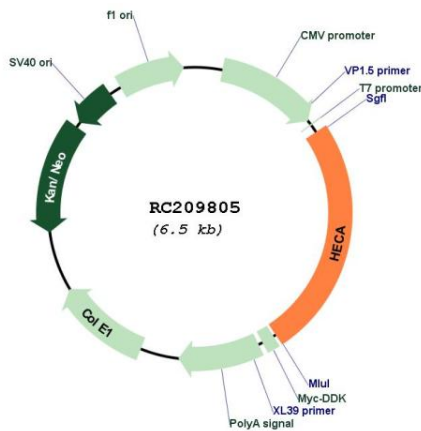
Components: The ORF clone is ion-exchange column purified and shipped in a 2D barcoded Matrix tube containing 10ug of transfection-ready, dried plasmid DNA (reconstitute with 100 ul of water).

- Reconstitution Method:**
1. Centrifuge at 5,000xg for 5min.
 2. Carefully open the tube and add 100ul of sterile water to dissolve the DNA.
 3. Close the tube and incubate for 10 minutes at room temperature.
 4. Briefly vortex the tube and then do a quick spin (less than 5000xg) to concentrate the liquid at the bottom.
 5. Store the suspended plasmid at -20°C. The DNA is stable for at least one year from date of shipping when stored at -20°C.

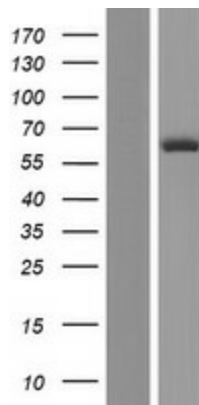
RefSeq: [NM_016217.3](#)
RefSeq Size: 5621 bp
RefSeq ORF: 1632 bp
Locus ID: 51696
UniProt ID: [Q9UBI9](#)
Cytogenetics: 6q24.1
MW: 58.8 kDa

Gene Summary: This gene encodes the homolog of the *Drosophila* headcase protein, a highly basic, cytoplasmic protein that regulates the re-entry of imaginal cells into the mitotic cycle during adult morphogenesis. In *Drosophila*, the encoded protein also inhibits terminal branching of neighboring cells during tracheal development. [provided by RefSeq, Jul 2008]

Product images:



Circular map for RC209805



Western blot validation of overexpression lysate (Cat# [LY414114]) using anti-DDK antibody (Cat# [TA50011-100]). Left: Cell lysates from untransfected HEK293T cells; Right: Cell lysates from HEK293T cells transfected with RC209805 using transfection reagent MegaTran 2.0 (Cat# [TT210002]).