

Product datasheet for **RC209804**

c-Jun (JUN) (NM_002228) Human Tagged ORF Clone

Product data:

Product Type:	Expression Plasmids
Product Name:	c-Jun (JUN) (NM_002228) Human Tagged ORF Clone
Tag:	Myc-DDK
Symbol:	c-Jun
Synonyms:	AP-1; AP1; c-Jun; cJUN; p39
Mammalian Cell Selection:	Neomycin
Vector:	pCMV6-Entry (PS100001)
E. coli Selection:	Kanamycin (25 ug/mL)
ORF Nucleotide Sequence:	>RC209804 representing NM_002228 Red=Cloning site Blue=ORF Green=Tags(s)

TTTTGTAATACGACTCACTATAGGGCGCCGGGAATTCGTCGACTGGATCCGGTACCGAGGAGATCTGCC
GCC**CGATCGCC**

ATGACTGCAAAGATGAAACGACCTTCTATGACGATGCCCTCAACGCCTCGTTCCTCCCGTCCGAGAGCG
GACCTTATGGCTACAGTAACCCCAAGATCCTGAAACAGAGCATGACCCTGAACCTGGCCGACCCAGTGGG
GAGCCTGAAGCCGCACCTCCGCGCCAAGAAGCTCGGACCTCCTCACCTCGCCCGACGTGGGGCTGCTCAAG
CTGGCGTCGCCCAGCTGGAGCGCCTGATAATCCAGTCCAGCAACGGGCACATCACCACCACGCCGACCC
CCACCCAGTTCCTGTGCCCAAGAAGCTGACAGATGAGCAGGAGGGCTTCGCCGAGGGCTTCGTGCGCGC
CCTGGCCGAAGTGCACAGCCAGAACACGCTGCCAGCGTACGTCGGCGGCGCAGCCGGTCAACGGGGCA
GGCATGGTGGCTCCCGCGGTAGCCTCGGTGGCAGGGGGCAGCGGAGCGGCGGCTTCAGCGCCAGCCTGC
ACAGCGAGCCGCGGTCTACGCAAACCTCAGCAACTTCAACCCAGGCGCGCTGAGCAGCGGCGGGGGC
GCCCTCTACGGCGCGGCGGCTGGCCTTCCCGCGCAACCCAGCAGCAGCAGCAGCCGCCGACCCAC
CTGCCCCAGCAGATGCCCGTGCAGCACCCGCGGCTGCAGGCCCTGAAGGAGGAGCCTCAGACAGTCCCCG
AGATGCCCGGCGAGACACCGCCCTGTCCCCATCGACATGGAGTCCCAGGAGCGGATCAAGCGGAGAG
GAAGCGCATGAGGAACCGCATCGCTGCCTCCAAGTGCCGAAAAGGAAGCTGGAGAGAATCGCCCGGCTG
GAGGAAAAGTGAAAACCTTAAAAGCTCAGAAGTCCGAGTGGCGTCCACGGCCAACATGCTCAGGGAAC
AGGTGGCACAGCTTAAACAGAAAGTCATGAACACGTTAACAGTGGGTGCCAACTCATGCTAACGCAGCA
GTTGCAAACATTT

ACGCGTACGCGGCCGCTCGAGCAGAAACTCATCTCAGAAGAGGATCTGGCAGCAAATGATATCCTGGATT
ACAAGGATGACGACGATAAGGTTTAA



[View online »](#)

Protein Sequence: >RC209804 representing NM_002228
 Red=Cloning site Green=Tags(s)

MTAKMETTFYDDALNASFLPSESGPYGYSNPKILKQSMTLNLADPVGSLKPHLRKNSDLLTSPDVGLLK
 LASPELERLIIQSSNGHITTTPTPTQFLCPKNVTDEQEGFAEGFVRALAEHLSQNTLPSVTSAAQPVNGA
 GMVAPAVASVAGGSGGGF SASLHSEPPVYANLSNFNPGALSSGGGAPSYGAAGLAFPAQPQQQQPPHH
 LPQQMPVQHPRLQALKEEPQTVPEMPGETPPLSPIDMESQERIKAEKRMRNRRIAASKCRKRKLERIARL
 EEKVKTLKAQNSELASTANMLREQVAQLKQKVMNHVNSGCQLMLTQQLQTF

TRTRPLEQKLISEEDLAANDILDYKDDDDKV

Chromatograms: https://cdn.origene.com/chromatograms/mg2553_d09.zip

Restriction Sites: SgfI-MluI

Cloning Scheme:



ACCN: NM_002228

ORF Size: 993 bp

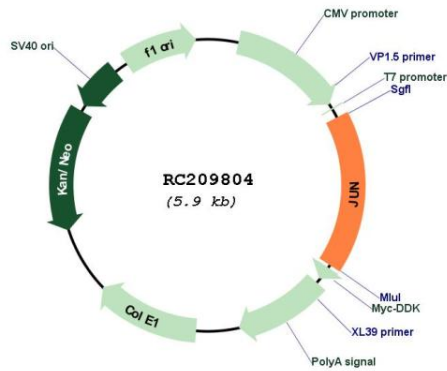
OTI Disclaimer: The molecular sequence of this clone aligns with the gene accession number as a point of reference only. However, individual transcript sequences of the same gene can differ through naturally occurring variations (e.g. polymorphisms), each with its own valid existence. This clone is substantially in agreement with the reference, but a complete review of all prevailing variants is recommended prior to use. [More info](#)

OTI Annotation: This clone was engineered to express the complete ORF with an expression tag. Expression varies depending on the nature of the gene.

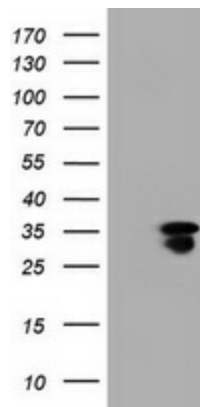
Components: The ORF clone is ion-exchange column purified and shipped in a 2D barcoded Matrix tube containing 10ug of transfection-ready, dried plasmid DNA (reconstitute with 100 ul of water).

Reconstitution Method:	<ol style="list-style-type: none">1. Centrifuge at 5,000xg for 5min.2. Carefully open the tube and add 100ul of sterile water to dissolve the DNA.3. Close the tube and incubate for 10 minutes at room temperature.4. Briefly vortex the tube and then do a quick spin (less than 5000xg) to concentrate the liquid at the bottom.5. Store the suspended plasmid at -20°C. The DNA is stable for at least one year from date of shipping when stored at -20°C.
Note:	Plasmids are not sterile. For experiments where strict sterility is required, filtration with 0.22um filter is required.
RefSeq:	NM_002228.4
RefSeq Size:	3338 bp
RefSeq ORF:	996 bp
Locus ID:	3725
UniProt ID:	P05412
Cytogenetics:	1p32.1
Domains:	BRLZ, Jun
Protein Families:	Druggable Genome, ES Cell Differentiation/IPS, Transcription Factors
Protein Pathways:	B cell receptor signaling pathway, Colorectal cancer, Epithelial cell signaling in Helicobacter pylori infection, ErbB signaling pathway, Focal adhesion, GnRH signaling pathway, MAPK signaling pathway, Neurotrophin signaling pathway, Pathways in cancer, Renal cell carcinoma, T cell receptor signaling pathway, Toll-like receptor signaling pathway, Wnt signaling pathway
MW:	35.5 kDa
Gene Summary:	This gene is the putative transforming gene of avian sarcoma virus 17. It encodes a protein which is highly similar to the viral protein, and which interacts directly with specific target DNA sequences to regulate gene expression. This gene is intronless and is mapped to 1p32-p31, a chromosomal region involved in both translocations and deletions in human malignancies. [provided by RefSeq, Jul 2008]

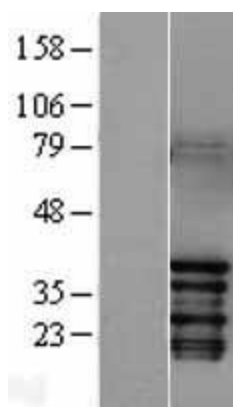
Product images:



Circular map for RC209804



HEK293T cells were transfected with the pCMV6-ENTRY control (Cat# [PS100001], Left lane) or pCMV6-ENTRY JUN (Cat# RC209804, Right lane) cDNA for 48 hrs and lysed. Equivalent amounts of cell lysates (5 ug per lane) were separated by SDS-PAGE and immunoblotted with anti-JUN (Cat# [TA800558]). Positive lysates [LY400825] (100ug) and [LC400825] (20ug) can be purchased separately from OriGene.



Western blot validation of overexpression lysate (Cat# [LY400825]) using anti-DDK antibody (Cat# [TA50011-100]). Left: Cell lysates from untransfected HEK293T cells; Right: Cell lysates from HEK293T cells transfected with RC209804 using transfection reagent MegaTran 2.0 (Cat# [TT210002]).