

Product datasheet for **RC209803**

ARGLU1 (NM_018011) Human Tagged ORF Clone

Product data:

Product Type:	Expression Plasmids
Product Name:	ARGLU1 (NM_018011) Human Tagged ORF Clone
Tag:	Myc-DDK
Symbol:	ARGLU1
Mammalian Cell Selection:	Neomycin
Vector:	pCMV6-Entry (PS100001)
E. coli Selection:	Kanamycin (25 ug/mL)
ORF Nucleotide Sequence:	>RC209803 ORF sequence Red=Cloning site Blue=ORF Green=Tags(s)

TTTTGTAATACGACTCACTATAGGGCGGCCGGGAATTCGTCGACTGGATCCGGTACCGAGGAGATCTGCCGCC**CGATCGCC**

ATGGGCCGGTCTCGGAGCCGGAGCTCGTCCCGCTCCAAGCACACCAAGAGCAGCAAGCACAACAAGAAGC
GCAGCCGGTCCCGGTCGCGATCCCGGGACAAGGAGCGCGTGCAGGAAAGCGTTCCAAATCTCGGAAAGTAA
ACGGAACCGGCGGGGAGTCCGGTCCCGTTCGCGCTCCACCAACACGGCCGTGCCGCGGAGCGG
GACCGGGAGCGCGCTCGTCCCGCCCGACCGCATCGACATCTTCGGGCGCACGGTGAGCAAGCGCAGCA
GCCTGGACGAGAAGCAGAAGCGAGAGGAGGAGGAGAAGAAAGCGGAGTTCGAGCGCAGCGAAAAATTCG
ACAGCAAGAAATAGAAGAAAACTCATCGAGGAAGAAACAGCACGAAGAGTAGAAGAATTGGTAGCAAAA
AGGGTGGAGGAAGAACTGGAGAAAAGGAAGGATGAAATTGAACGAGAAAGTTCTCCGAAGGGTGGAGGAAG
CCAAACGCATCATGGAAAAGCAGTTGCTCGAAGAACTCGAGCGACAGAGACAAGCTGAGCTTGCCGCACA
AAAAGCTAGAGAGGTAACGCTCGGTCGTTTGGAAAGTAGAGACAGTCCATGGCAAACTTTCAGTGTGG
GTTCTGCCTCCTGCTCAGTTCAGAAAGAGATGGAATACAGACTATCTAATTCCTTCTCGCTAAACTTA
ACATTGCTGCGAAAGTAAATTTTTAGCCTATTCAGAGGTGCTGACTGATAACTAAAAGTTGGAAGCTT
TTATAAACATATTCAAGGATACTTTTTGATTTAATGAACTGGCTATT

ACGCGTACGCGGCCGCTCGAGCAGAAAACATCTCAGAAGAGGATCTGGCAGCAAATGATATCCTGGATT
ACAAGGATGACGACGATAAGTTTAA



[View online »](#)

Protein Sequence: >RC209803 protein sequence
Red=Cloning site Green=Tags(s)

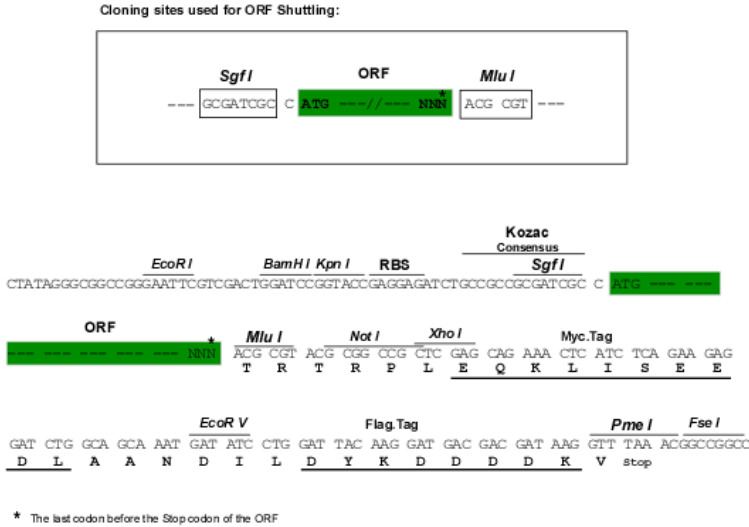
```
MGRSRSRSSSRKHTKSSKHNNKRSRSDKERVRKRSKSRESKRNRRESRSRSTNTAVSRER
DRERASSPPDRIDIFGRTVSKRSSLDEKQKREEEKKAEFERQKIRQQEIEEKLIEEETARRVEELVAK
RVEEELEKRKDEIEREVLRRVVEAKRIMEKQLLEELERQQAELAAQKAREVTLGRLESRDSPWQNFQCW
VLPPAQFRKRWNTDYLIPFSSKLNIAAKVNFLLAYSEVLDNLKVGSGFYKYSRILFDLMELAI
```

TRTRPLEQKLISEEDLAANDILDYKDDDDKV

Chromatograms: https://cdn.origene.com/chromatograms/mk6358_e11.zip

Restriction Sites: SgfI-MluI

Cloning Scheme:



ACCN: NM_018011

ORF Size: 819 bp

OTI Disclaimer: The molecular sequence of this clone aligns with the gene accession number as a point of reference only. However, individual transcript sequences of the same gene can differ through naturally occurring variations (e.g. polymorphisms), each with its own valid existence. This clone is substantially in agreement with the reference, but a complete review of all prevailing variants is recommended prior to use. [More info](#)

OTI Annotation: This clone was engineered to express the complete ORF with an expression tag. Expression varies depending on the nature of the gene.

Components: The ORF clone is ion-exchange column purified and shipped in a 2D barcoded Matrix tube containing 10ug of transfection-ready, dried plasmid DNA (reconstitute with 100 ul of water).

Reconstitution Method:

1. Centrifuge at 5,000xg for 5min.
2. Carefully open the tube and add 100ul of sterile water to dissolve the DNA.
3. Close the tube and incubate for 10 minutes at room temperature.
4. Briefly vortex the tube and then do a quick spin (less than 5000xg) to concentrate the liquid at the bottom.
5. Store the suspended plasmid at -20°C. The DNA is stable for at least one year from date of shipping when stored at -20°C.

RefSeq: [NM_018011.2](#), [NP_060481.2](#)

RefSeq Size: 1772 bp

RefSeq ORF: 822 bp

Locus ID: 55082

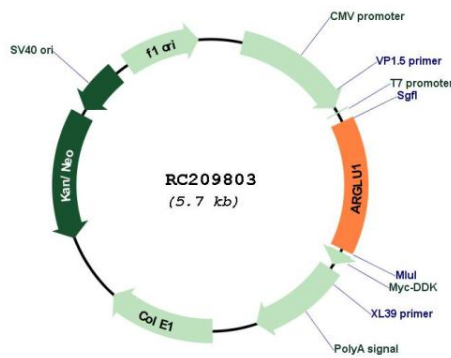
UniProt ID: [Q9NWB6](#)

Cytogenetics: 13q33.3

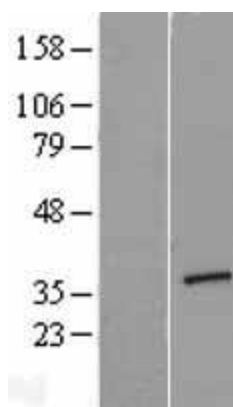
MW: 32.9 kDa

Gene Summary: Required for the estrogen-dependent expression of ESR1 target genes. Can act in cooperation with MED1.[UniProtKB/Swiss-Prot Function]

Product images:



Circular map for RC209803



Western blot validation of overexpression lysate (Cat# [LY413377]) using anti-DDK antibody (Cat# [TA50011-100]). Left: Cell lysates from untransfected HEK293T cells; Right: Cell lysates from HEK293T cells transfected with RC209803 using transfection reagent MegaTran 2.0 (Cat# [TT210002]).