

## Product datasheet for RC209799

### BPNT2 (NM\_017813) Human Tagged ORF Clone

#### Product data:

Product Type:	Expression Plasmids
Product Name:	BPNT2 (NM_017813) Human Tagged ORF Clone
Tag:	Myc-DDK
Symbol:	BPNT2
Synonyms:	GPAPP; IMP-3; IMP 3; IMPA3; IMPAD1
Mammalian Cell Selection:	Neomycin
Vector:	pCMV6-Entry (PS100001)
E. coli Selection:	Kanamycin (25 ug/mL)
ORF Nucleotide Sequence:	>RC209799 representing NM_017813 Red=Cloning site Blue=ORF Green=Tags(s)

TTTTGTAATACGACTCACTATAGGGCGCCGGGAATTCGTCGACTGGATCCGGTACCGAGGAGATCTGCC  
GCC**CGATCGCC**

ATGGCCCCATGGGCATCCGCCTTTCCCACTGGGGGTGGCAGTGTTCCTGCTGGGGCTCGGCGTGC  
TCTACCACCTCTACTCGGGCTTCTGGCCGGCCGCTTCAGCCTCTTCGGCCTGGGCGCGAGCCTGGCGG  
CGGCGCGCGGGGCCCGCGCCGCGCCGATGGGGCACCGTGGACTTGCAGGAGATGCTGGCTGTGTCA  
GTGCTGGCCGAGTCCGCGCGGCGACGAGGTGAGGCGCGTCCGCGAGAGCAACGTCTCCACGAGAAGT  
CCAAGGGGAAGACGCGCGAGGGAGCCGAGGACAAGATGACCAGCGCGACGTGCTGTCCAACCGCAAGT  
GTTCTACCTGCTCAAGACCGCTTCCCCAGCGTCCAGATTAATACTGAGGAACACGTGGATGCAGCTGAT  
CAGGAGGTTATCTTGTGGATCATAAGATTCTGAGGATATCCTAAAGGAAGTAACACTCTCTAAAGAGG  
TACCAGCAGAAAGTGTACTGTCTGGATTGACCCACTTGATGCTACACAGGAATATACAGAGGATCTTCG  
AAAGTACGTCACTACTATGGTGTGTGGCTGTAATGGTAAACCATGCTAGGAGTTATACATAAGCCA  
TTTTCCGAATATACAGCTTGGGCAATGGTAGATGGTGGTTCAAATGTGAAAGCCCGCTCTTCTACAATG  
AGAAGACCCCAAGGATCGTTGTGTCTCGTTCCTCCATTGAGGATGGTCAAACAGGTCGCTCTTCAGACTTT  
TGGAACCCAGACTACAATTATCCAGCTGGTGGTGTGCTGGTTATAAAGTTTTAGCACTTTTGGATGTGCT  
GATAAGAGTCAAGAAAAAGCTGATTTATACATCCATGTGACATACATCAAAAAGTGGGATATATGTGCTG  
GTAATGCCATCTTAAAAGCCCTAGGGGGCATATGACTACCTGAGTGGTGAAGAAATCAGTTACACTGG  
TTCAGACGGCATTGAAGGGGACTCCTTGTAGCATCAGAATGAACCACCAGGCCCTGGTCAGAAAACCTC  
CCAGATCTAGAAAAGACAGGACATAAA

**ACGCGT**ACGCGGCCGCTCGAGCAGAAACTCATCTCAGAAGAGGATCTGGCAGCAAATGATATCCTGGATT  
ACAAGGATGACGACGATAAGGTTAA



[View online »](#)

**Protein Sequence:** >RC209799 representing NM\_017813  
Red=Cloning site Green=Tags(s)

MAPMGIRLSPLGVAVFCLLGLGLVLYHLYSGFLAGRFLFGLGGEPGGGAAGPAAAADGGTVDLREMLAVS  
 VLAAVRGGDEVRRVRESNVLHEKSKGKTREGAEDKMTSGDVL SNRKM FYLLKTA FSPVQINTEEHVDAAD  
 QEVILWDHKIPEDILKEVTPKPEVPAESVTWIDPLDATQEYTEDLRKYVTTMVCVAVNGK PMLGVIHKP  
 FSEYTAWAMVDGGSNVKARSSYNEKTPRIVVSRS HSGMVKQVALQTFGNQTTIIPAGGAGYKVLALLDVP  
 DKSQEKADLYIHVTYIKKWDICAGNAILKALGGHMTTLSGEEISYTGSDGIEGGLLASIRMNHQALVRKL  
 PDLEKTGHK

TRTRPLEQKLISEEDLAANDILDYKDDDDKV

**Chromatograms:** [https://cdn.origene.com/chromatograms/ja1560\\_f04.zip](https://cdn.origene.com/chromatograms/ja1560_f04.zip)

**Restriction Sites:** SgfI-MluI

**Cloning Scheme:**



**ACCN:** NM\_017813

**ORF Size:** 1077 bp

**OTI Disclaimer:** The molecular sequence of this clone aligns with the gene accession number as a point of reference only. However, individual transcript sequences of the same gene can differ through naturally occurring variations (e.g. polymorphisms), each with its own valid existence. This clone is substantially in agreement with the reference, but a complete review of all prevailing variants is recommended prior to use. [More info](#)

**OTI Annotation:** This clone was engineered to express the complete ORF with an expression tag. Expression varies depending on the nature of the gene.

**Components:** The ORF clone is ion-exchange column purified and shipped in a 2D barcoded Matrix tube containing 10ug of transfection-ready, dried plasmid DNA (reconstitute with 100 ul of water).

**Reconstitution Method:**

1. Centrifuge at 5,000xg for 5min.
2. Carefully open the tube and add 100ul of sterile water to dissolve the DNA.
3. Close the tube and incubate for 10 minutes at room temperature.
4. Briefly vortex the tube and then do a quick spin (less than 5000xg) to concentrate the liquid at the bottom.
5. Store the suspended plasmid at -20°C. The DNA is stable for at least one year from date of shipping when stored at -20°C.

**RefSeq:** [NM\\_017813.5](#)

**RefSeq Size:** 2438 bp

**RefSeq ORF:** 1080 bp

**Locus ID:** 54928

**UniProt ID:** [Q9NX62](#)

**Cytogenetics:** 8q12.1

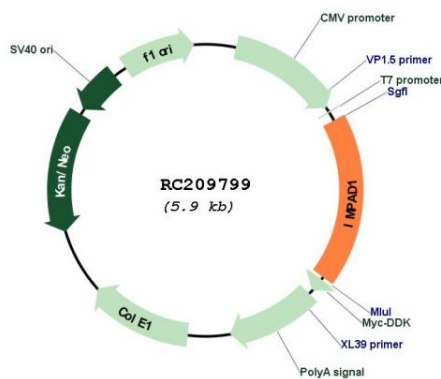
**Domains:** inositol\_P

**Protein Families:** Transmembrane

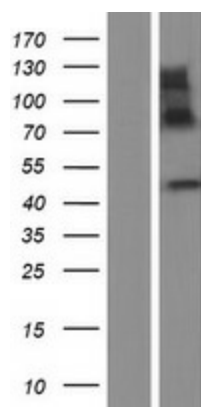
**MW:** 38.5 kDa

**Gene Summary:** This gene encodes a member of the inositol monophosphatase family. The encoded protein is localized to the Golgi apparatus and catalyzes the hydrolysis of phosphoadenosine phosphate (PAP) to adenosine monophosphate (AMP). Mutations in this gene are a cause of GRAPP type chondrodysplasia with joint dislocations, and a pseudogene of this gene is located on the long arm of chromosome 1. [provided by RefSeq, Dec 2011]

### Product images:



Circular map for RC209799



Western blot validation of overexpression lysate (Cat# [LY413522]) using anti-DDK antibody (Cat# [TA50011-100]). Left: Cell lysates from untransfected HEK293T cells; Right: Cell lysates from HEK293T cells transfected with RC209799 using transfection reagent MegaTran 2.0 (Cat# [TT210002]).