

Product datasheet for **RC209794**

CRBN (NM_016302) Human Tagged ORF Clone

Product data:

Product Type:	Expression Plasmids
Product Name:	CRBN (NM_016302) Human Tagged ORF Clone
Tag:	Myc-DDK
Symbol:	CRBN
Synonyms:	MRT2; MRT2A
Mammalian Cell Selection:	Neomycin
Vector:	pCMV6-Entry (PS100001)
E. coli Selection:	Kanamycin (25 ug/mL)



[View online »](#)

ORF Nucleotide Sequence:

>RC209794 representing NM_016302
 Red=Cloning site Blue=ORF Green=Tags(s)

TTTTGTAATACGACTCACTATAGGGCGGCCGGAATTCGTGACTGGATCCGGTACCGAGGAGATCTGCC
 GCC**CGATCGCC**

ATGGCCGGCGAAGGAGATCAGCAGGACGCTGCGCACAAACATGGGCAACCACCTGCCGCTCCTGCCTGCAG
 AGAGTGAGGAAGAAGATGAAATGGAAGTTGAAGACCAGGATAGTAAAGAAGCCAAAAACCAACATCAT
 AAATTTTGACACCACTGCTGCCGACATCACATACATACCTAGGTGCTGATATGGAAGAATTCATGGCAGG
 ACTTTGCACGATGACGACAGCTGTCAGGTGATTCCAGTCTTCCACAAGTGATGATGATCCTGATCCCG
 GACAGACATTACCTCTCAGCTTTTACCCTCAAGAAGTCAGTATGGTGCAGAAATTAATTCAGAAAGA
 TAGAACCTTTGCTGTTCTTGCATACAGCAATGTACAGGAAAGGGAAGCACAGTTTGAACAACAGCAGAG
 ATATATGCCTATCGAGAAGAACAGGATTTTGAATTGAGATAGTAAAGTAAAGCAATTGGAAGACAAA
 GGTTCAAAGTCTTGAGTAAGAACACAGTCAGATGGAATCCAGCAAGCTAAAGTCAAATCTTCCCGA
 ATGTGTGTGCCCTCAACCATGTCTGCAGTTCAATTAGAATCCCTCAATAAGTCCAGATATTTCTTCA
 AAACCTGTCTCAAGAGAAGACCAATGTTTATATAAATGGTGGCAGAAATACCAGAAGAGAAAGTTTCATT
 GTGCAATCTAACTTCATGGCCTCGCTGGCTGATTCTTATATGATGCTGAGACCTTAATGGACAGAAT
 CAAGAAACAGCTACGTGAATGGGATGAAAATCTAAAAGATGATTCTTCTTCAATCCAATAGATTTT
 TCTTACAGAGTAGCTGCTTGTCTTCTATTGATGATGATTGAGAATTCAGCTCCTTAAAATTGGCAGTG
 CTATCCAGCGACTTCGCTGTGAATTAGACATTAGAATAAATGTAATCCCTTTGCTGTAACAATGTC
 AGAAACAGAAATAACAACCAAAAATGAAATATTCAGTTTATCCTTATGTGGGCCGATGGCAGCTTATGTG
 AATCCTCATGGATATGTGCATGAGACACTTACTGTGTATAAGGCTTGAACCTGAATCTGATAGGCCGGC
 CTTCTACAGAACACAGCTGGTTTCTGGGTATGCCTGGACTGTTGCCAGTGAAGATCTGTGCAAGCCA
 TATTGGATGGAAGTTTACGGCCACCAAAAAGACATGTCACCTCAAAAATTTGGGGCTAACCGCATCT
 GCTCTGTTGCCACGATCCAGACACTGAAGATGAAATAAGTCCAGACAAAGTAATACTTTGCTTG

ACGCGTACGCGGCCGCTCGAGCAGAACTCATCTCAGAAGAGGATCTGGCAGCAATGATATCCTGGATT
 ACAAGGATGACGACGATAAGGTTTAA

Protein Sequence:

>RC209794 representing NM_016302
 Red=Cloning site Green=Tags(s)

MAGEGDQQDAAHNMGNHLPLPAESEEDEMEVEDQDSKEAKKPNIIINFDTSLPTSHTYLGADMEEFHGR
 TLHDDDSQVIVLPQVMMILIPQTLPLQLFHPQEVSMVRNLIQKDRTFAVLAYSNVQEREAQFGTTAE
 IYAYREEQDFGIEIVKKAIGRQRFKVLRLTQSDGIQQAKVQILPECVLPSTMSAVQLESLNKCQIFPS
 KPVSREDQCSYKWWQKYQKRKFHCANLTSWPRWLYSLYDAETLMDRIKKQLREWENLKDDSLPSNPIDF
 SYRVAACLPIDDVLRILKIGSAIQRLRCELDIMNKCTSLCCKQCQETEITTKNEIFSLSLCGPMAAYV
 NPHGYVHETLTVYKACNLNLIIGRPSTEHSWPGYAWTVAQCKICASHIGWKFTATKKDMSPQKFWGLTRS
 ALLPTIPDTEDEISPDKIVLCL

TRTRPLEQKLISEEDLAANDILDYKDDDDKV

Chromatograms:

https://cdn.origene.com/chromatograms/mg4199_h01.zip

Restriction Sites:

Sgfl-Mlul

Cloning Scheme:


ACCN: NM_016302

ORF Size: 1326 bp

OTI Disclaimer: The molecular sequence of this clone aligns with the gene accession number as a point of reference only. However, individual transcript sequences of the same gene can differ through naturally occurring variations (e.g. polymorphisms), each with its own valid existence. This clone is substantially in agreement with the reference, but a complete review of all prevailing variants is recommended prior to use. [More info](#)

OTI Annotation: This clone was engineered to express the complete ORF with an expression tag. Expression varies depending on the nature of the gene.

Components: The ORF clone is ion-exchange column purified and shipped in a 2D barcoded Matrix tube containing 10ug of transfection-ready, dried plasmid DNA (reconstitute with 100 ul of water).

Reconstitution Method:

1. Centrifuge at 5,000xg for 5min.
2. Carefully open the tube and add 100ul of sterile water to dissolve the DNA.
3. Close the tube and incubate for 10 minutes at room temperature.
4. Briefly vortex the tube and then do a quick spin (less than 5000xg) to concentrate the liquid at the bottom.
5. Store the suspended plasmid at -20°C. The DNA is stable for at least one year from date of shipping when stored at -20°C.

RefSeq: [NM_016302.4](#)

RefSeq Size: 2596 bp

RefSeq ORF: 1329 bp

Locus ID: 51185

UniProt ID: [Q96SW2](#)

Cytogenetics: 3p26.2

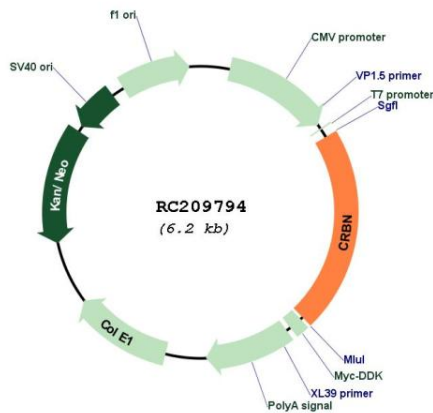
Domains: LON

Protein Families: Protease

MW: 50.5 kDa

Gene Summary: This gene encodes a protein related to the Lon protease protein family. In rodents and other mammals this gene product is found in the cytoplasm localized with a calcium channel membrane protein, and is thought to play a role in brain development. Mutations in this gene are associated with autosomal recessive nonsyndromic cognitive disability. Multiple transcript variants encoding different isoforms have been found for this gene. [provided by RefSeq, Mar 2010]

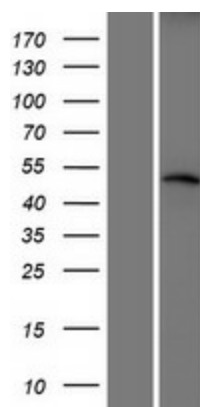
Product images:



Circular map for RC209794



Coomassie blue staining of purified CRBN protein (Cat# [TP309794]). The protein was produced from HEK293T cells transfected with CRBN cDNA clone (Cat# RC209794) using MegaTran 2.0 (Cat# [TT210002]).



Western blot validation of overexpression lysate (Cat# [LY414073]) using anti-DDK antibody (Cat# [TA50011-100]). Left: Cell lysates from untransfected HEK293T cells; Right: Cell lysates from HEK293T cells transfected with RC209794 using transfection reagent MegaTran 2.0 (Cat# [TT210002]).