

Product datasheet for **RC209793**

IRGC (NM_019612) Human Tagged ORF Clone

Product data:

| | |
|---------------------------|---|
| Product Type: | Expression Plasmids |
| Product Name: | IRGC (NM_019612) Human Tagged ORF Clone |
| Tag: | Myc-DDK |
| Symbol: | IRGC |
| Synonyms: | CINEMA; IFGGE; ligp5; IRGC1; R30953_1 |
| Mammalian Cell Selection: | Neomycin |
| Vector: | pCMV6-Entry (PS100001) |
| E. coli Selection: | Kanamycin (25 ug/mL) |



[View online »](#)

ORF Nucleotide Sequence:

>RC209793 ORF sequence
 Red=Cloning site Blue=ORF Green=Tags(s)

TTTTGTAATACGACTCACTATAGGGCGGCCGGGAATTCGTCGACTGGATCCGGTACCGAGGAGATCTGCC
 GCC**GCGATCGCC**

ATGGCTACTTCAAAGTTGCCCGTGGTGCCTGGGGAGGAGAAAACACCATCCTTATGGCCAAAGAAAGGC
 TGGAGGCCCTGCGCACAGCCTTTGAGTCGGGTGACCTCCCCAGGCCGCCTCTCACCTCCAGGAGCTGCT
 GGCTCCACGAAAGCATCCGCCTGGAGGTGGCGTACGGGCGAGTCGGGCGGGCAAGTCTCCCTC
 ATCAATGCCCTGCGTGGCTGGAGGCCGAGACCTGGCGCGGCTCTCACGGGCGTCATGGAGACCACGA
 TGAACCGTCGCCCTATCCACACCCACAGTTCCCTGACGTGACCTCTGGGACCTGCCAGGAGCCGGCTC
 TCCAGGCTGCCCGGCTGACAAGTACCTAAAGCAGGTAGACTTCAGCCGCTATGACTTCTTCTGCTGGTC
 TCCCCCGCCGCTGCGGGGCCGTCGAGACCCGCTGGCCGCTGAGATCCTGTGCCAGGGCAAGAAGTTCT
 ACTTTGTGCGCACCAAGGTGGACGAGGACCTGGCGGCCACGCGCACCCAGCGGCCGTCGGGCTTCAGAGA
 GGCCGCTGCTCCTGCAAGGATCCGAGACCACTGTGCCGAGCGGCTGCGGGAGGCCGGCGTGGCTGACCT
 CGCATCTTCTGGTGTCCAACCTCTCGCCGGCCGCTACGACTTCCACGCTGGTGTCCACCTGGGAGC
 ACGACCTGCCCTCCCACGGCGCCACGCTGGCCTGCTGTGCTCCCCGACATCTCGCTGGAGGCCTTGCA
 GAAGAAGAAGGCCATGCTTCAAGAGCAAGTCTCAAGACCGCCCTGGTGTGGGGCTCATCCAGGCCCTG
 CCGGTCCCAGGGCTGGCGGCCGCTACGATGATGCGTTGCTCATCCACTCACTGCGTGGCTACCACCGCA
 GCTTTGGTCTGGACGACGACTCGCTGGCCAAGCTGGCCGAGCAGGTGGGCAAACAGGCAGGTGACCTGCG
 CTCGGTCATCCGCTCCCCACTGGCCAACGAGGTCTCGCTGAGACTGTCTGCGGCTCTATTCCAGTGC
 TCCGACGGCGCCATGCGGGTGGCCCGCCCTTTGAGAGGGGATCCCTGTGTTGGGACGCTGGTGGCTG
 GCGGCTCAGCTTTGGCGTGTCTACACCATGCTCCAGGGTGCCTCAACGAGATGGCTGAGGACGCCCA
 GGTGTCCGCATCAAGGCCCTGGAGGATGACGACCCGACCCGAGGTCAGCTTGAAGTGGCCAGTGAC
 AATGGCGTGAAAAGGGGGCTCCGGGGAGGGAGTGGGGAGGAAGCCCACTCTCAACCTGCAGGAAGC
 TCGCCTCCTTCTAAGTACATTCTGGACAGCTGGAAGAAACACGACTCAGAAGAGAAA

ACGCGTACGCGGCCGCTCGAGCAGAACTCATCTCAGAAGAGGATCTGGCAGCAAATGATATCCTGGATT
 ACAAGGATGACGACGATAAGGTTTAA

Protein Sequence:

>RC209793 protein sequence
 Red=Cloning site Green=Tags(s)

MATSKLPVVPGEENTILMAKERLEALRTAFESGDLQAASHLQELLASTESIRLEVGVGTGESGAGKSSL
 INALRGLAEDPGAAL TGVMETMQPSPYPHPQFPDVTLWDLPGAGSPGCPADKYLKQVDFSRDYDFLLV
 SPRRCGAVETRLAAEILCQGKKFYFVRTKVDEDLAATRTQRPSTGFRFAAVLQEIARDHCAERLREAGVADP
 RIFLVSNLSPARYDFPTLVSTWEHDLPSHRRHAGLLSLPDISLEALQKKKAMLQEYVLTALVLGVIQAL
 PVPGLAAAYDALLIHSLRGYHRSFGLDDDSLAKLAEQVKGQAGDLRSVIRSPLANEVSPETVLRLYSQS
 SDGAMRVARAFERGI PVFGTLVAGGISFGAVYTM LQGCLNEMAEDAQRVRIKALEDEPQPEVSLEVASD
 NGVEKGGSGEGGEEAPLSTCRKLG LLLKYILDSWKKH DSEEK

TRTRPLEQKLISEEDLAANDILDYKDDDDKV

Chromatograms:

https://cdn.origene.com/chromatograms/mk6708_h04.zip

Restriction Sites:

Sgfl-Mlul

Cloning Scheme:


ACCN: NM_019612

ORF Size: 1389 bp

OTI Disclaimer: The molecular sequence of this clone aligns with the gene accession number as a point of reference only. However, individual transcript sequences of the same gene can differ through naturally occurring variations (e.g. polymorphisms), each with its own valid existence. This clone is substantially in agreement with the reference, but a complete review of all prevailing variants is recommended prior to use. [More info](#)

OTI Annotation: This clone was engineered to express the complete ORF with an expression tag. Expression varies depending on the nature of the gene.

Components: The ORF clone is ion-exchange column purified and shipped in a 2D barcoded Matrix tube containing 10ug of transfection-ready, dried plasmid DNA (reconstitute with 100 ul of water).

- Reconstitution Method:**
1. Centrifuge at 5,000xg for 5min.
 2. Carefully open the tube and add 100ul of sterile water to dissolve the DNA.
 3. Close the tube and incubate for 10 minutes at room temperature.
 4. Briefly vortex the tube and then do a quick spin (less than 5000xg) to concentrate the liquid at the bottom.
 5. Store the suspended plasmid at -20°C. The DNA is stable for at least one year from date of shipping when stored at -20°C.

RefSeq: [NM_019612.4](#)

RefSeq Size: 1619 bp

RefSeq ORF: 1392 bp

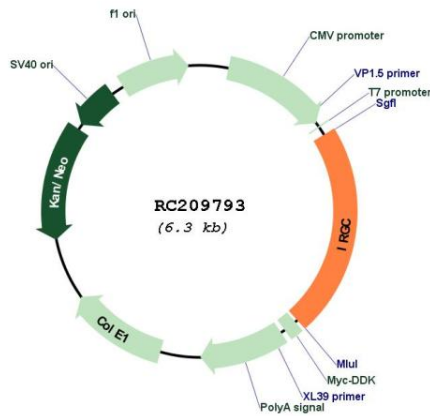
Locus ID: 56269

UniProt ID: [Q6NXR0](#)

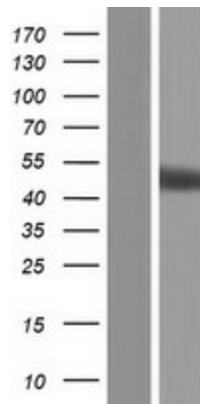
Cytogenetics: 19q13.31

MW: 50.3 kDa

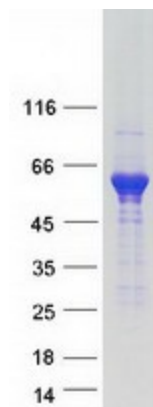
Product images:



Circular map for RC209793



Western blot validation of overexpression lysate (Cat# [LY412736]) using anti-DDK antibody (Cat# [TA50011-100]). Left: Cell lysates from untransfected HEK293T cells; Right: Cell lysates from HEK293T cells transfected with RC209793 using transfection reagent MegaTran 2.0 (Cat# [TT210002]).



Coomassie blue staining of purified IRGC protein (Cat# [TP309793]). The protein was produced from HEK293T cells transfected with IRGC cDNA clone (Cat# RC209793) using MegaTran 2.0 (Cat# [TT210002]).