

Product datasheet for **RC209792**

DDX43 (NM_018665) Human Tagged ORF Clone

Product data:

Product Type:	Expression Plasmids
Product Name:	DDX43 (NM_018665) Human Tagged ORF Clone
Tag:	Myc-DDK
Symbol:	DDX43
Synonyms:	CT13; HAGE
Mammalian Cell Selection:	Neomycin
Vector:	pCMV6-Entry (PS100001)
E. coli Selection:	Kanamycin (25 ug/mL)



[View online »](#)

ORF Nucleotide
Sequence:

>RC209792 representing NM_018665
Red=Cloning site Blue=ORF Green=Tags(s)

TTTTGTAATACGACTCACTATAGGGCGGCCGGAATTCGTCGACTGGATCCGGTACCGAGGAGATCTGCC
GCCGCGATCGCC

ATGTCCCACCACGGAGGAGCTCCAAGGCCTCTACGTGGTCTGTTGCTAGTCGGCGAAGCTCGACAGTGT
CCCGAGCGCCAGAGAGGAGGCCGCGGAGGAGTTGAATCGAACAGGTCTGAGGGATATAGTGTCCGCAG
AGTGGTTCGCTGGAGAGGCACCTCTAGGCCCGGAGGACGTGGCCGCTGGTCACGAGGAACTGCCGCTG
TGTTTTGCTTTGAAGAGCCACTTTGTTGGCGCGTAATCGGTCTGGTGGGTCAAAAATAAAGAATATAC
AAAGTACAACAAACACCACAATCCAAAATAACAAGAACAACCAGAATCATTAGTCAAAAATTTTGGCAG
CAAGGCAATGCAAACGAAAGCAAAGCAGTGATAGACAATTTTGTAAAAAGCTAGAAGAAAATTACAAT
TCAGAATGCGGAATTGACTGCATTCCAACCTCTGTTGGAAAAGATGGAAGCAGAGATAACAATGTTG
TTGCAGGAGATCGCCATTGATAGATTGGGATCAAATTAGAGAGGAAGGTTTGAATGGCAAAAAACAA
GTGGGCAGATTTACCACCAATTAAGAAAACTTTTATAAAGAGTCCACTGCCACAAGTCCATGTCAAAA
GTAGAAGCAGATAGTTGGAGGAAAGAAAATTTTAAATAACGTGGGATGACTTGAAGGATGGGGAGAAAC
GACCTATCCCAATCCTACCTGCACATTTGATGACGCCTTCAATGTTATCCTGAGGTTATGAAAAACAT
TAAAAAGGCAGTTTTTCAAAGCCAACCTATTCACTCACAGGCATGGCCCATTTGTTGCAAGGAATA
GATCTTATAGGAGTAGCCGAGCTGGAACAGGAAAGACATTGTGTTATTTAATGCCTGGATTTATTCATC
TGGTCTTCAACCCAGCCTTAAAGGTCAAAGGAATAGACCCGGCATGTTAGTTCTAACTCCCACTCGGGA
ATTAGCACTTCAAGTGAAGGAGAATGTTGCAAAATTCATATAAAGGGCTTCGGAGTGTGTTGTATAT
GGTGGTGGAAATAGAGATGAACAAATAGAAGAGCTTAAAAAGGTGTAGATATCATAATTGCAACTCCCG
GAAGATTGAATGATCTGCAAATGAGTAACCTCGTCAATCTGAAGAATATAACCTACTTGGTTTTAGATGA
AGCAGACAAGATGTTGGACATGGGATTTGAACCCAGATAATGAAGATTTTGTAGATGTGCGCCAGAT
AGGCAGACAGTTATGACCAGTGCTACATGGCCTCATTCACTCATCGCCTCGCACAACTTATTTGAAAG
AACCAATGATTGTCTATGTTGGTACATTGGATCTAGTTGCTGTAAGTTCAGTGAAGCAAAAATAAATTGT
AACCCAGGAGGAAGAAAATGGAGTCACATGCAAATTTTCTACAGAGTATGTCATCCACAGACAAAGTC
ATTGTCTCGTTTCTCGAAAAGCTGTTGCGGATCACTTATCAAGTGACCTAATACTTGGAAATATATCAG
TAGAGTCTCTGCATGGAGATAGAGAACAGAGAGATCGGGAGAAAGCATTAGAGAATTTAAACAGGCAA
AGTGAGAATACTAATTGCAACTGATCTAGCCTCTAGAGGACTTGATGTCCATGACGTTACACATGTCTAT
AATTTTACTTTCCACGGAATATTGAAGAATACGTACACCGAATAGGGCGCACGGGAAGAGCAGGGAGGA
CTGGTGTTCATTACAATTTGACTAGAAATGATTGGAGGGTTGCCTCTGAATTGATTAATATTCTGGA
AAGAGCAAATCAGAGTATTCCAGAGGAGCTTGATCAATGGCTGAGAGGTTTAAGGCACATCAACAGAAA
AGGAAATGAAAAGAAAATGAAAAGACCTCAAGGAAGGCCCAAGAAGTTTCAT

ACGCGTACGCGGCCGCTCGAGCAGAACTCATCTCAGAAGAGGATCTGGCAGCAAATGATATCCTGGATT
ACAAGGATGACGACGATAAGGTTTAA

Protein Sequence: >RC209792 representing NM_018665
Red=Cloning site Green=Tags(s)

MSHHGGAPKASTWVVASRRSSTVSRAPERRPAEELNRTGPEGYSVGRGGRWRGTSRPPEDVAAGHEELPL
 CFALKSHFVGAIVGRGSKIKNIQSTTNTTIQIIIEQPESLVKIFGSKAMQTKAKAVIDNFVKKLEENYN
 SECGIDTAFQPSVGKDGSDNNVVAGDRPLIDWDQIREEGLKWQKTKWADLPPIKKNFYKESTATSAMS
 VEADSWRKENFNITWDDLKDGKEKRPINPTCTFDDAFQCYPEVMENIKKAGFQKPTPIQSQAWPVILQGI
 DLIGVAQTGTGKTLCYLMPGF IHLVLPQLKGGQRNRPGLVLTPTRELALQVEGECKKSYKGLRSVCVY
 GGGNRDEQIEELKKGVDIIATPGRNLNDLQMSNFVNLKNITYLVLDEADKMLDMGFEPQIMKILLDVRPD
 RQVTMATSATWPHSVHRLAQSYLKEPMIVYVGTLDLVAVSSVKQNIIVTTEEEKWSHMOTFLQMSSTDKV
 IVFVSRKAVADHLSSDLILGNISVESLHGDREQRDREKALENFKTGKVRIL IATDLASRGLDVHDVTHVY
 NFDFFRNIEEYVHRIGRTGRAGRTGVSITTLTRNDWRVASELINILERANQSIPEELVSMARFKAHQQK
 REMERKMERPQGRPKKFH

TRTRPLEQKLISEEDLAANDILDYKDDDDKV

Chromatograms: https://cdn.origene.com/chromatograms/mg3515_a08.zip

Restriction Sites: SgfI-MluI

Cloning Scheme:



ACCN: NM_018665

ORF Size: 1944 bp

OTI Disclaimer: The molecular sequence of this clone aligns with the gene accession number as a point of reference only. However, individual transcript sequences of the same gene can differ through naturally occurring variations (e.g. polymorphisms), each with its own valid existence. This clone is substantially in agreement with the reference, but a complete review of all prevailing variants is recommended prior to use. [More info](#)

OTI Annotation: This clone was engineered to express the complete ORF with an expression tag. Expression varies depending on the nature of the gene.

Components: The ORF clone is ion-exchange column purified and shipped in a 2D barcoded Matrix tube containing 10ug of transfection-ready, dried plasmid DNA (reconstitute with 100 ul of water).

Reconstitution Method:

1. Centrifuge at 5,000xg for 5min.
2. Carefully open the tube and add 100ul of sterile water to dissolve the DNA.
3. Close the tube and incubate for 10 minutes at room temperature.
4. Briefly vortex the tube and then do a quick spin (less than 5000xg) to concentrate the liquid at the bottom.
5. Store the suspended plasmid at -20°C. The DNA is stable for at least one year from date of shipping when stored at -20°C.

RefSeq: [NM_018665.3](#)

RefSeq Size: 2318 bp

RefSeq ORF: 1947 bp

Locus ID: 55510

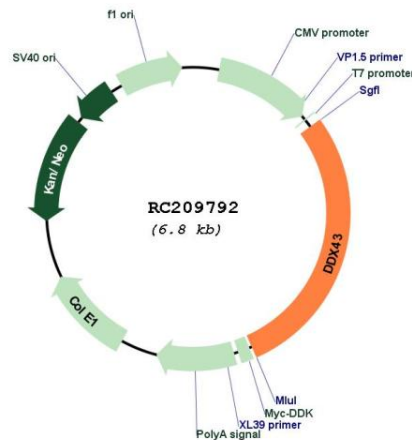
UniProt ID: [Q9NXZ2](#)

Cytogenetics: 6q13

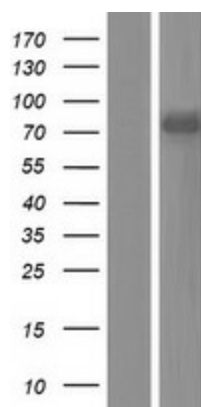
MW: 72.7 kDa

Gene Summary: The protein encoded by this gene is an ATP-dependent RNA helicase in the DEAD-box family and displays tumor-specific expression. [provided by RefSeq, Jul 2008]

Product images:



Circular map for RC209792



Western blot validation of overexpression lysate (Cat# [LY412971]) using anti-DDK antibody (Cat# [TA50011-100]). Left: Cell lysates from untransfected HEK293T cells; Right: Cell lysates from HEK293T cells transfected with RC209792 using transfection reagent MegaTran 2.0 (Cat# [TT210002]).