

Product datasheet for **RC209790**

TMEM35 (TMEM35A) (NM_021637) Human Tagged ORF Clone

Product data:

Product Type: Expression Plasmids
Product Name: TMEM35 (TMEM35A) (NM_021637) Human Tagged ORF Clone
Tag: Myc-DDK
Symbol: TMEM35
Synonyms: NACHO; TMEM35; TUF-1
Mammalian Cell Selection: Neomycin
Vector: pCMV6-Entry (PS100001)
E. coli Selection: Kanamycin (25 ug/mL)
ORF Nucleotide Sequence: >RC209790 ORF sequence
Red=Cloning site Blue=ORF Green=Tags(s)

TTTTGTAATACGACTCACTATAGGGCGGCCGGAATTCGTCGACTGGATCCGGTACCGAGGAGATCTGCC
GCC**CGGATCGCC**

ATGGCATCCCCAGAACCCTAATTATTGTGGCCCTCTCAGTGGCCCTGGGACTCTTCTTTGTTTTTCATGG
GGACTATCAAGCTGACCCCAAGGCTCAGCAAGGATGCCTACAGTGAAGTAAACGTTACAAGAGCTA
TGTTCCGAGCCCTCCCTCTGCTGAAGAAAATGGGATCAATTCATTCTCCTCCGAAAAGCATTGGTGCC
CTTGAAGTGGCCTGTGGCATCGTCATGACCCTTGTGCCTGGCGTCCCAAAGATGTGCCAACTTCTTCC
TACTGTTGCTGGTGTGGCTGTGCTCTTCTCCACCAGCTGGTCGGTGATCCTCTCAAACGCTACGCCCA
TGCTCTGGTGTGGGAATCCTGCTCACTTGCCGCTGCTGATTGCTCGCAAGCCGAAAGCCGGTCTTCT
GAGAAGAAGCCTTGGCCAGGGAATGCTGAGGAGCAACCCTCCTTATATGAGAAGGCCCTCAGGGCAAAG
TGAAGGTGTCA

ACGCGTACGCGGCCGCTCGAGCAGAACTCATCTCAGAAGAGGATCTGGCAGCAAATGATATCCTGGATT
ACAAGGATGACGACGATAAGGTTTAA

Protein Sequence: >RC209790 protein sequence
Red=Cloning site Green=Tags(s)

MASPRVTIVALSVLGLFFVFMGTIKLTPRLSKDAYSEMGRAYSYVRALPLLKMGINSILLRKSIGAL
LEVACGI VMTLVPGRPKDVANFFLLLLVLAVLFFHQLVGDPLKRYAHALVFGILLTCRLLIARKPEDRSS
EKKPLPGNAEEQPSLYEKAPQGKVKVS

TRTRPLEQKLISEEDLAANDILDYKDDDDKV

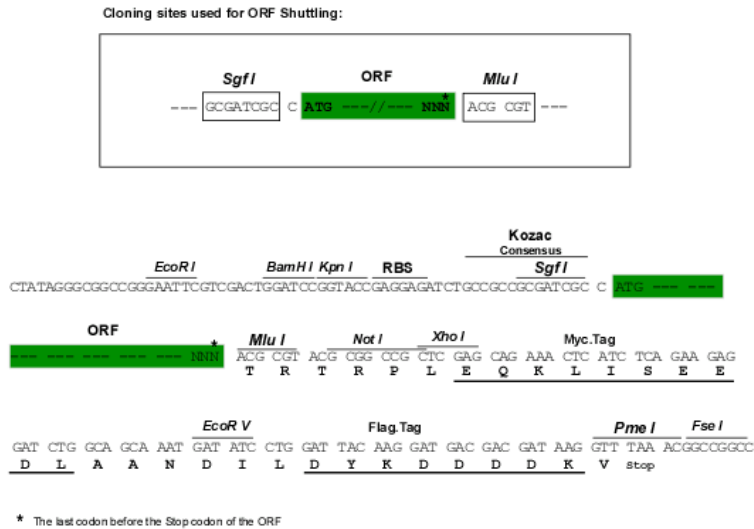
Chromatograms: https://cdn.origene.com/chromatograms/mk6358_g08.zip



[View online »](#)

Restriction Sites: SgfI-MluI

Cloning Scheme:



ACCN: NM_021637

ORF Size: 501 bp

OTI Disclaimer: The molecular sequence of this clone aligns with the gene accession number as a point of reference only. However, individual transcript sequences of the same gene can differ through naturally occurring variations (e.g. polymorphisms), each with its own valid existence. This clone is substantially in agreement with the reference, but a complete review of all prevailing variants is recommended prior to use. [More info](#)

OTI Annotation: This clone was engineered to express the complete ORF with an expression tag. Expression varies depending on the nature of the gene.

Components: The ORF clone is ion-exchange column purified and shipped in a 2D barcoded Matrix tube containing 10ug of transfection-ready, dried plasmid DNA (reconstitute with 100 ul of water).

Reconstitution Method:

1. Centrifuge at 5,000xg for 5min.
2. Carefully open the tube and add 100ul of sterile water to dissolve the DNA.
3. Close the tube and incubate for 10 minutes at room temperature.
4. Briefly vortex the tube and then do a quick spin (less than 5000xg) to concentrate the liquid at the bottom.
5. Store the suspended plasmid at -20°C. The DNA is stable for at least one year from date of shipping when stored at -20°C.

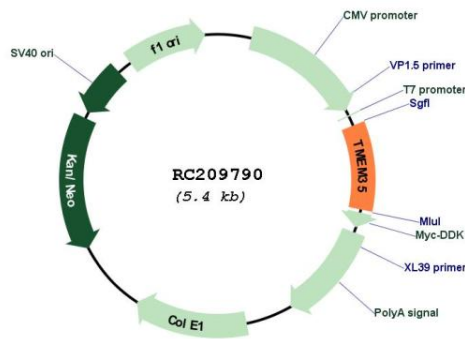
Note: Plasmids are not sterile. For experiments where strict sterility is required, filtration with 0.22um filter is required.

RefSeq: [NM_021637.3](#)

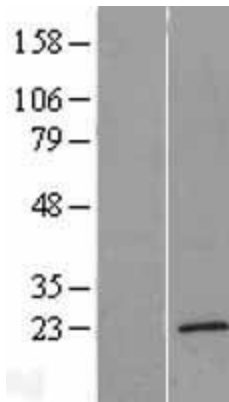
RefSeq Size: 2086 bp

RefSeq ORF: 504 bp

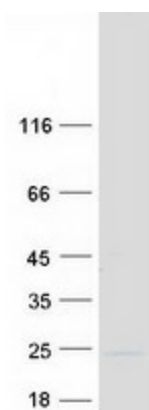
Locus ID: 59353
UniProt ID: [Q53FP2](#)
Cytogenetics: Xq22.1
Protein Families: Transmembrane
MW: 18.4 kDa
Gene Summary: A soluble peptide released by shedding may interact with NGFR and modulate neurite outgrowth.[UniProtKB/Swiss-Prot Function]

Product images:


Circular map for RC209790



Western blot validation of overexpression lysate (Cat# [LY411954]) using anti-DDK antibody (Cat# [TA50011-100]). Left: Cell lysates from untransfected HEK293T cells; Right: Cell lysates from HEK293T cells transfected with RC209790 using transfection reagent MegaTran 2.0 (Cat# [TT210002]).



Coomassie blue staining of purified TMEM35A protein (Cat# [TP309790]). The protein was produced from HEK293T cells transfected with TMEM35A cDNA clone (Cat# RC209790) using MegaTran 2.0 (Cat# [TT210002]).