

Product datasheet for **RC209784**

PARIS (ZNF746) (NM_152557) Human Tagged ORF Clone

Product data:

Product Type:	Expression Plasmids
Product Name:	PARIS (ZNF746) (NM_152557) Human Tagged ORF Clone
Tag:	Myc-DDK
Symbol:	PARIS
Synonyms:	PARIS
Mammalian Cell Selection:	Neomycin
Vector:	pCMV6-Entry (PS100001)
E. coli Selection:	Kanamycin (25 ug/mL)



[View online »](#)

ORF Nucleotide
Sequence:

>RC209784 ORF sequence
Red=Cloning site Blue=ORF Green=Tags(s)

TTTTGTAATACGACTCACTATAGGGCGGCCGGAATTCGTCGACTGGATCCGGTACCGAGGAGATCTGCC
GCC**CGCATCGCC**

ATGGCCGAGGCGGTCCGGCTCCGATTTCTCCGTGGACGATGGCAGCCACGATTCAGGCCATGGAGAGGA
AGATTGAATCGCAGGCTGCTCGCCTGCTTCCCTAGAAGGTCGAACCGGGATGGCCGAGAAGAAGCTGGC
TGATTGCGAGAAGACAGCCGTGGAGTTCGGGAACCAAGTGGGGCCGTGCTGGGGACCCTG
CTGCAGGAGTACGGGCTGCTGCAGAGGCGGCTGGAGAACGTGGAGAACCTGCTGCGCAACAGGAATTCT
GGATCCTGCGGCTGCCCCGGGCAGCAAGGGGAGTCCCCTAAGGAGTGGGGCAAGCTGGAGGACTGGCA
GAAGGAGCTCTACAAGCACGTGATGAGGGGCAACTACGAGACGCTGGTCTCCCTGGACTACGCCATCTCC
AAGCCCGAGGTCCTCTCCAGATTGAACAAGGGAAGGAGCCCTGCAACTGGCGCCGCCCTGGCCCAAGA
TTCCAGATGTTTCTGTGGACCCAGTCCAGGCTCGGGGCCCCAGTTCGCCCCAGACCTTTGATGCA
GATCAAGCAGGAGGGTGAGCTCCAGCTCCAGGAGCAGCAGGCCCTGGGCGTGGAGGCGTGGGCAGCCGGG
CAGCCAGATATTGGGGAGGAGCCCTGGGGCCTCAGCCAGCTGGATTCCGGAGCAGGAGACATCTCCACGG
ATGCCACCTCTGGTGTCCATTCCAATTTTCCACCACCATCCCGCCACCTCCTGGCAAACGGATCTCCC
TCCCCACCATCCCTCTTACGATGCTCGGACGGGACCCTGAAGCTCAACACAGCAGCCTCCACGGAAGAT
GTAAAAATTGTAATAAAAAACAGAAGTCCAGGAAGAGGAGTGGTGGCCACACCCGTACATCTACTGACC
TAGAGGCTCACGGGACCTGTTTGGACCAGGCCAAGCCACACGGTTCTTCCCTAGTCCTGCCAGGAAGG
AGCCTGGGAAAGCCAGGGCAGCTCCTTCCCAGCCAGGACCCTGTGCTGGGGCTGCGAGAGCCCGCCCGG
CCTGAGAGGGACATGGGTGAGCTCAGTCTGCTGTGGCCAGGAGGAGACCCCTCCTGGGACTGGCTCT
TCGGAGGGGTCCGGTGGGGCTGGAATTTCCGGTGTAAACCGCCAGTGGCCCTGAACCCGAGGACGGGGCC
CGAGGGGCTTCTTACTCCTCCCCGACAACGGAGAGGCCATCTTGGACCCAGCCAGGCCCAAGGCCA
TTCAACGAACCTGTAATACCTTGCCGACCAAGGCTTTGGCCACAAGCCAGGGCTGAAGAAGCACC
CCGCGGCGCCCCCGGGGCGGCCCTTACCTGCGCCACGTGTGGGAAGAGCTTCCAGTGCAAGTCAG
CCTGAGCGCGCACAGCGCAGCTGTGGGGCGCCGACGGGTGGGGCCGGGCACAGGCGGTGGCGGCAGC
GGCAGTGGCGGCGCGGTGGCGGCAGCGGTGGGGCAGCGCACGGGATGGCAGCGCCCTTCGGTGTGGG
AGTGGCGCGTGTGCTTACGCGCCCGCGCACCTATCCGCCATCGCATGCTGCACACCGGCGAGCGGCC
CTTCCCCTGCACCGAGTGTGAGAAGCGCTTACCGAACGCTCCAAGCTCATCGACCACTACCGAACGCAC
ACGGGCGTGGCGCCCTTACCTGCACCGTCTGCGGCAAAAGCTTATCCGCAAGGACCACCTCCGCAAGC
ACCAGCGCAACCATGCAGCGGGCCCAAGACCCCGGCCGAGGCCAGCCACTCCCGACGCGCCCGCACC
TCTGATCCCTTCAAGAGCCCGCCTCCAAGGACCTTTGGCCTCCACAGACCTTGTGACCGACTGGACT
TGTGGCCTCAGCGTCTGGGACCCACCGATGGCGGGGACATG

ACGCGTACGCGGCCGCTCGAGCAGAACTCATCTCAGAAGAGGATCTGGCAGCAAATGATATCCTGGATT
ACAAGGATGACGACGATAAGGTTTAA

OTI Disclaimer: Due to the inherent nature of this plasmid, standard methods to replicate additional amounts of DNA in E. coli are highly likely to result in mutations and/or rearrangements. Therefore, OriGene does not guarantee the capability to replicate this plasmid DNA. Additional amounts of DNA can be purchased from OriGene with batch-specific, full-sequence verification at a reduced cost. Please contact our customer care team at custsupport@origene.com or by calling 301.340.3188 option 3 for pricing and delivery.

The molecular sequence of this clone aligns with the gene accession number as a point of reference only. However, individual transcript sequences of the same gene can differ through naturally occurring variations (e.g. polymorphisms), each with its own valid existence. This clone is substantially in agreement with the reference, but a complete review of all prevailing variants is recommended prior to use. [More info](#)

OTI Annotation: This clone was engineered to express the complete ORF with an expression tag. Expression varies depending on the nature of the gene.

Components: The ORF clone is ion-exchange column purified and shipped in a 2D barcoded Matrix tube containing 10ug of transfection-ready, dried plasmid DNA (reconstitute with 100 ul of water).

Reconstitution Method:

1. Centrifuge at 5,000xg for 5min.
2. Carefully open the tube and add 100ul of sterile water to dissolve the DNA.
3. Close the tube and incubate for 10 minutes at room temperature.
4. Briefly vortex the tube and then do a quick spin (less than 5000xg) to concentrate the liquid at the bottom.
5. Store the suspended plasmid at -20°C. The DNA is stable for at least one year from date of shipping when stored at -20°C.

RefSeq: [NM_152557.5](#)

RefSeq Size: 3813 bp

RefSeq ORF: 1935 bp

Locus ID: 155061

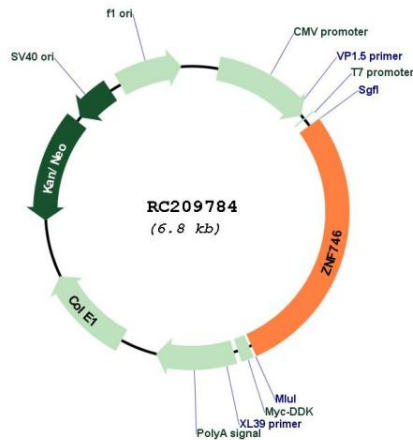
UniProt ID: [Q6NUN9](#)

Cytogenetics: 7q36.1

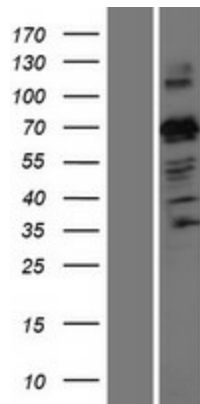
MW: 69.1 kDa

Gene Summary: Transcription repressor that specifically binds to the 5'-TATTTT[T/G]-3' consensus sequence on promoters and repress transcription of PGC-1-alpha (PPARGC1A), thereby playing a role in regulation of neuron death.[UniProtKB/Swiss-Prot Function]

Product images:



Circular map for RC209784



Western blot validation of overexpression lysate (Cat# [LY432009]) using anti-DDK antibody (Cat# [TA50011-100]). Left: Cell lysates from untransfected HEK293T cells; Right: Cell lysates from HEK293T cells transfected with [RC228982] using transfection reagent MegaTran 2.0 (Cat# [TT210002]).