

Product datasheet for **RC209780**

PUS7L (NM_031292) Human Tagged ORF Clone

Product data:

Product Type:	Expression Plasmids
Product Name:	PUS7L (NM_031292) Human Tagged ORF Clone
Tag:	Myc-DDK
Symbol:	PUS7L
Mammalian Cell Selection:	Neomycin
Vector:	pCMV6-Entry (PS100001)
E. coli Selection:	Kanamycin (25 ug/mL)



[View online »](#)

ORF Nucleotide
Sequence:

>RC209780 ORF sequence
Red=Cloning site Blue=ORF Green=Tags(s)

TTTTGTAATACGACTCACTATAGGGCGGCCGGGAATTCGTCGACTGGATCCGGTACCGAGGAGATCTGCC
GCC**CGCATCGCC**

ATGGAAGAAGATACAGATTATAGAATCAGGTTTAGTTCCTTTGTGTTTCTTTAATGATCACGTTGGATTTCC
ATGGCACTATAAAAAGCTCACCAAGTGACTTTATTGTTATTGAAATTGATGAACAGGGACAGTTAGTTAA
TAAGACCATCGATGAGCCTATTTTCAAGATTAGTGAAATACAACCTGAGCCAAAATAATTTCCAAAAA
CCAAAAGTAGATCTTCAAAATCTGTCCTTAGAAGATGGAAGAAACCAAGAAGTTCATACTTTGATTAAGT
ACACTGATGGTGACCAAAATCATCAGTCTGGTTCAGAAAAGGAAGATACTATCGTTGATGGAACCTCCAA
ATGTGAAGAAAAAGCTGATGTTTTAAGCTCCTTTTGGATGAAAAAAGTTCATGAGTTACTGAATAATTTT
GCCTGTGATGTAAGAGAGAAGTGGCTTTCTAAAACAGAGCTAATTGGACTACCTCCTGAATTCTCAATAG
GCAGAATCGTTGACAAAAACCAGAGGGCTAGTTTACACAGTGCCATTAGGCAGAAATTTCCATTTTGTAGT
AACTGTAGGAAAAACAGTGAAATTGTTGTAACCAAACTCTTGAATATAAAGAAGTTCATTTGGTA
TCTGAAGAGGAAGCATTGACTTTTTTAAATATTTGGATGCAAAGAAAGAAAATTCAAAATTTACCTTTA
AACCTGATACAAACAAAGACCACAGAAAAGCTGTCCACCATTTTGTCAACAAAAAGTTTGGAAAACCTTGT
GGAAACCAAACTTTTTCTAAAATGAATTGCAAGTCTGTAATCCGAATGTGGTGGTAACAGTAAGATTT
CGGGAAAAAGCACACAAACGTGGGAAAAGGCTCTTTCTGAATGCCAAGAAGGAAAAGTTATATACAG
CTTTTACCTACGAAAGGAAAACCTGGAATGTTTGAAGCGATTGGTTTTTGTAGCTATCAAACCTGGTGT
TATTCCTCGGATTTTGTATGTCAGGCCTTAAAGACAAGAAAGCCATCACCTATCAAGCAATGGTGT
AGAAAAGTGACTCCAGAGAGGTTGAAAAATTTGAAAAAGAAATGAAAAAGAAAGAAATGAATGTCTTTA
ATATTCGGTCTGTAGATGATCCCTGAGACTTGGTCAGCTCAAAGGAAATCACTTTGATATTGTCATTAG
AAATTTAAAAAAACAAATAAATGATTCTGCAAACTGAGGGAGAGAATTATGGAAGCAATAGAAAATGTT
AAGAAAAAAGGCTTTGTGAATTACTATGGACCACAGAGATTTGGGAAGGGAAGGAAAAGTTACACAGACC
AAATTGGACTAGCTTTGCTGAAGAATGAATGATGAAAGCCATAAAATGTTTCTTACACCAAGAGACTT
GGATGATCCTGTAATAGAGCAAAGAAGTATTTCTTCAAACCTGAGGATGCTAAAGGCACACTTTTCATTG
ATGCCTGAATCAAAGTGCCTGAGAGAGCATTGTTGGAGGCATTGCACCGCTTTGGCATGACCGAGGAAG
GTTGTATCCAGGCATGGTCTCTTTACCCATTCCATGCGCATATTCTATGTTACGCATATACCAGCAA
AATTTGGAATGAGGCAGTATCTTACAGACTTGAACCTATGGAGCAAGAGTAGTGCAGGGTATTGGTCT
TGTTTGGATGAAGACATTGATGACGAGAATTTCCAAAATAGTAAAATTCACCTGGTAAGTGAAGAGGAGG
GATCAGCTAATATGTATGCAATACATCAGGTGGTCTTCCAGTACTTGGATACAATATTCAGTACCCGAA
GAACAAAGTAGGGCAGTGGTACCATGACATACTTAGCAGAGATGGACTACAGACATGTAGGTTTAAAGTA
CCTACTCTGAAACTGAATATACCAGTTGCTATAGACAGATTTTGAACATCCCTGTAATCTCTCATACC
AACTAATGGAAGATCATGACATTGATGTCAAACGAAAGGTTCCACATTGATGAAACAGCTTTGTCTCT
TTTGATCTCTTTGATCTTGTGCTTATGCTATGCTACCGTTTGTCTGAAGGAAATAATGAAGCATGAC
GTT

ACGCGTACGCGGCCGCTCGAGCAGAACTCATCTCAGAAGAGGATCTGGCAGCAAATGATATCCTGGATT
ACAAGGATGACGACGATAAGGTTTAA

Protein Sequence: >RC209780 protein sequence
 Red=Cloning site Green=Tags(s)

MEEDTDYRIRFSSLFFNDHVGFGHTIKSSPSDFIVIEIDEQGQLVNKTIDEPFKISEIQLEPNNFPKK
 PKLDLQNL SLEDGRNQEVHTLIKYTDDGQNHQSGSEKEDTIVDGTSKCEEKADVLSSFLDEKTHELLNMF
 ACDVREKWL SKTELI GLPPEFSIGRIVDKNQASLHSAIRQKFPFLVTVGKNSEIVVKPNLEYKELCHLV
 SEEEAFDFFKYLD AKKENS KFTFKPDTNKHDKAVHHFVNKKFGNLVETKSF SKMNCSAGNPVVVTVRF
 REKAHKRGRPLSECQEGKVIYTAFTLRKENLEMFEAIGFLAIKLGVIPSDFSYAGLKDKKAITYQAMVV
 RKVTPERLKNIEKEIEKKRMNVFNIRSVDLSRLGQLKGNHFDIVIRNLKKQINDSANLRERIMEAIENV
 KKKGFVNYYPQRF GKGRKVHTDQIGLALLKNEMMKAIKLFLTPEDLDDPVNRAKKYFLQTEDAKGTL SL
 MPEFKVRERALLEALHRFGMTEEGCIQAWFSLPHSMRIFYVHAYTSKIWNEAVSYRLETYGARVVQGD LV
 CLDEDIDDENFQNSKIHLVTEEEGSANMYAIHQVVL PVLGYNIQYPKNKVGQWYHDILSRDLQTCRFKV
 PTLKLNIPGQYRQILKHP CNLSYQLMEDHDIDVKTGKSHIDETALSL LISFDLDASCYATVCLKEIMKHD
 V

TRTRPLEQKLI SEEDLAANDILDYKDDDDKV

Chromatograms: https://cdn.origene.com/chromatograms/mk6693_g04.zip

Restriction Sites: SgfI-MluI

Cloning Scheme:

Cloning sites used for ORF Shuttling:



* The last codon before the Stop codon of the ORF

ACCN: NM_031292

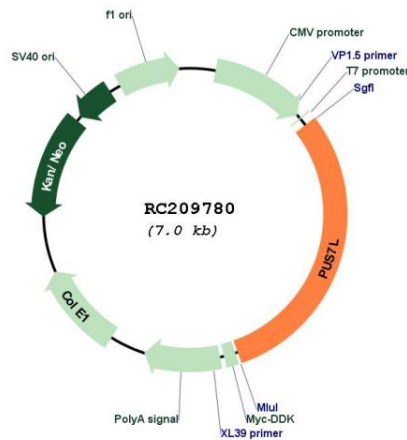
ORF Size: 2103 bp

OTI Disclaimer: The molecular sequence of this clone aligns with the gene accession number as a point of reference only. However, individual transcript sequences of the same gene can differ through naturally occurring variations (e.g. polymorphisms), each with its own valid existence. This clone is substantially in agreement with the reference, but a complete review of all prevailing variants is recommended prior to use. [More info](#)

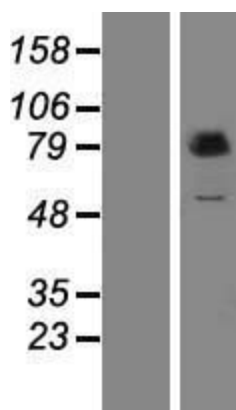
OTI Annotation: This clone was engineered to express the complete ORF with an expression tag. Expression varies depending on the nature of the gene.

Components:	The ORF clone is ion-exchange column purified and shipped in a 2D barcoded Matrix tube containing 10ug of transfection-ready, dried plasmid DNA (reconstitute with 100 ul of water).
Reconstitution Method:	<ol style="list-style-type: none"> 1. Centrifuge at 5,000xg for 5min. 2. Carefully open the tube and add 100ul of sterile water to dissolve the DNA. 3. Close the tube and incubate for 10 minutes at room temperature. 4. Briefly vortex the tube and then do a quick spin (less than 5000xg) to concentrate the liquid at the bottom. 5. Store the suspended plasmid at -20°C. The DNA is stable for at least one year from date of shipping when stored at -20°C.
RefSeq:	<u>NM_031292.2, NP_112582.2</u>
RefSeq Size:	3985 bp
RefSeq ORF:	2106 bp
Locus ID:	83448
UniProt ID:	<u>Q9H0K6</u>
Cytogenetics:	12q12
Domains:	UPF0024
MW:	80.7 kDa
Gene Summary:	Pseudouridylate synthase that catalyzes pseudouridylation of RNAs.[UniProtKB/Swiss-Prot Function]

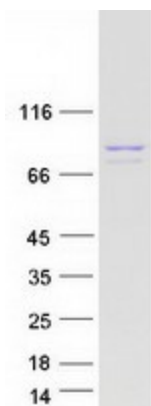
Product images:



Circular map for RC209780



Western blot validation of overexpression lysate (Cat# [LY420641]) using anti-DDK antibody (Cat# [TA50011-100]). Left: Cell lysates from untransfected HEK293T cells; Right: Cell lysates from HEK293T cells transfected with [RC220623] using transfection reagent MegaTran 2.0 (Cat# [TT210002]).



Coomassie blue staining of purified PUS7L protein (Cat# [TP309780]). The protein was produced from HEK293T cells transfected with PUS7L cDNA clone (Cat# RC209780) using MegaTran 2.0 (Cat# [TT210002]).