

Product datasheet for **RC209779**

LSG1 (NM_018385) Human Tagged ORF Clone

Product data:

Product Type:	Expression Plasmids
Product Name:	LSG1 (NM_018385) Human Tagged ORF Clone
Tag:	Myc-DDK
Symbol:	LSG1
Mammalian Cell Selection:	Neomycin
Vector:	pCMV6-Entry (PS100001)
E. coli Selection:	Kanamycin (25 ug/mL)



[View online »](#)

**ORF Nucleotide
Sequence:**

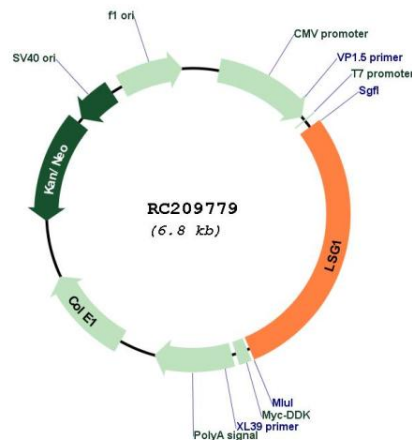
>RC209779 ORF sequence
 Red=Cloning site Blue=ORF Green=Tags(s)

TTTTGTAATACGACTCACTATAGGGCGGCCGGGAATTCGTCGACTGGATCCGGTACCGAGGAGATCTGCC
 GCC**CGGATCGCC**

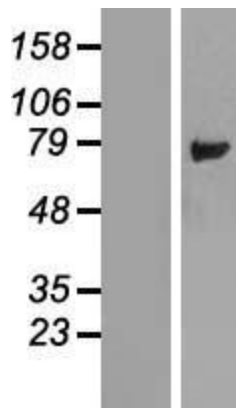
ATGGGCCGGAGGAGACCCCGCCGGTGGGTGCGTGGACGGGCCCTTATGCGCCATCAGACTCAGCGGA
 GCCGAAGCCATCGTCACACTGACTCCTGGTTGCACACAAGTGAACCAATGATGGCTATGATTGGGGTCG
 TCTTAATCTTCAGTCAGTGAACAGAGCTCCCTTGATGACTTCTTGCTACTGCAGAACTTGCAGGA
 ACAGAGTTTGTAGCTGAAAACTTAATATTAAGTTTGTGCCTGCTGAGGCTAGAAGTGGACTACTGTCTT
 TCGAGGAGAGCCAGAGAATTAAGAAGCTCCATGAAGAAAAACAACAGTTCCTTGTGTATACCGAGGAGACC
 AAAGTGAACCAAAATACTACCCAGAAGAAGTCAACAAGCAGAGAAAGATAACTTTCTAGAATGGAGA
 CGTCAGCTTGTCCGGCTAGAAGAGGAACAGAAGCTGATATTGACTCCATTTGAACGAAATTTGGACTTTT
 GGGCCAGCTCTGGAGAGTCATTGAGAGAAGTGATATTGGTCCAGATAGTAGTCTCGAAACCCACT
 CCTGTTTATAGTGTGAGGATTTGGATGTTATGTGAAAGAAATGGATGCCAATAAGGAGAAGCTCATTCTG
 ATCAACAAGGCAGACTTGTCTGACTGCTGAGCAGCGGAGTGCCTGGCCATGTACTTCGAAAAAGAAGATG
 TGAAGTTATTTTCTGGTCAGCTTTGGCCGGAGCCATTCCCTGAATGGTACTCTGAGGAAGAGGCAAA
 CAGAGATGATAGACAAAGCAACAACACTGAGTTTGGACATTCCAGTTTCGACCAGGCTGAAATTTCCAC
 AGTGAATCCGAACATCTCCAGCTAGGGATTCTCCTTCACTTAGTGAAAAACCCACAACGGATGAAGATG
 ACAGTGAGTATGAGGACTGTCCAGAGGAGGAGGAAGACGACTGGCAGACGTGCTCAGAAGAAGACGGTCC
 CAAGGAAGAGGACTGCAGCCAGGACTGGAAGGAAAGCTCTACTGCAGATTCTGAGGCTCGGAGCAGGAAA
 ACCCCACAGAAGAGGCAGATACACAATTTTAGCCATCTGGTATCCAAGCAGGAGTTACTGGAGCTCTTTA
 AGGAGCTACACACTGGGAGAAAGGTGAAAGATGGGCAACTTACGGTCGGACTGGTGGGCTACCCTAATGT
 TGGTAAGAGTTCAACAATCAACACCATCATGGGCAACAAGAAAGTATCTGTGTCTGCCACACCTGGTCAC
 ACAAAGCACTTTCAGACTCTCTATGTGGAGCCTGGCCTCTGCCTGTGTACTGTCTGGCTTGGTATGC
 CATCTTTTGTGTCTACCAAGGCAGAAATGACTTGCAGCGGAATCCTCCAATTGATCAGATGAGAGATCA
 TGTTCTCCTGTATCACTAGTTTGCAGAAATTTCCAAGACATGTTTGAAGCTACCTATGGCATTAAAC
 ATCATAACGCCTAGAGAGGATGAAGATCCCACCGACCTCCAACATCGGAAGAAGTGTGACAGCTTATG
 GATACATGCGAGGATTCATGACAGCGCATGGACAGCCAGACCAGCCTCGATCTGCGCGCTACATCCTGAA
 GGACTATGTGAGTGGTAAGCTGTGTACTGCCATCCTCCTCCTGGAAGAGATCCTGTAACTTTTCAGCAT
 CAACACCAGCGACTCCTAGAGAACAAAATGAACAGTGATGAAATAAAAATGCAGTAGGCAGAAATAAAA
 AAGCAAAGCAGATTGAAAATATCGTTGACAAAACCTTTTTCCATCAAGAGAATGTGAGGGCTTTGACCAA
 AGGAGTCCAGGCTGTGATGGGTTACAAGCCCGGAGTGGTGTAGTGACTGCATCCACTGCGAGCTGTGAG
 AACGGGGCGGGGAAGCCCTGAAAAAACATGGCAACAGAAATAAAAAAGAAAAAAGTCGTAGACTCTACA
 AGCACCTGGATATG

ACGCGTACGCGGCCGCTCGAGCAGAAACTCATCTCAGAAGAGGATCTGGCAGCAATGATATCCTGGATT
 ACAAGGATGACGACGATAAGGTTTAA

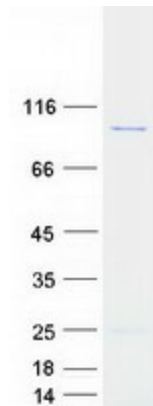
Components:	The ORF clone is ion-exchange column purified and shipped in a 2D barcoded Matrix tube containing 10ug of transfection-ready, dried plasmid DNA (reconstitute with 100 ul of water).
Reconstitution Method:	<ol style="list-style-type: none"> 1. Centrifuge at 5,000xg for 5min. 2. Carefully open the tube and add 100ul of sterile water to dissolve the DNA. 3. Close the tube and incubate for 10 minutes at room temperature. 4. Briefly vortex the tube and then do a quick spin (less than 5000xg) to concentrate the liquid at the bottom. 5. Store the suspended plasmid at -20°C. The DNA is stable for at least one year from date of shipping when stored at -20°C.
RefSeq:	<u>NM_018385.1</u> , <u>NP_060855.1</u>
RefSeq Size:	3589 bp
RefSeq ORF:	1977 bp
Locus ID:	55341
UniProt ID:	<u>Q9H089</u>
Cytogenetics:	3q29
Domains:	MMR_HSR1
MW:	75.2 kDa
Gene Summary:	This gene encodes a protein related to the yeast large subunit GTPase 1. The encoded protein is necessary for cell viability and may localize in the endoplasmic reticulum, nucleus and cytoplasm.[provided by RefSeq, Feb 2009]

Product images:


Circular map for RC209779



Western blot validation of overexpression lysate (Cat# [LY413084]) using anti-DDK antibody (Cat# [TA50011-100]). Left: Cell lysates from untransfected HEK293T cells; Right: Cell lysates from HEK293T cells transfected with RC209779 using transfection reagent MegaTran 2.0 (Cat# [TT210002]).



Coomassie blue staining of purified LSG1 protein (Cat# [TP309779]). The protein was produced from HEK293T cells transfected with LSG1 cDNA clone (Cat# RC209779) using MegaTran 2.0 (Cat# [TT210002]).