

Product datasheet for **RC209777**

MFSD5 (NM_032889) Human Tagged ORF Clone

Product data:

Product Type:	Expression Plasmids
Product Name:	MFSD5 (NM_032889) Human Tagged ORF Clone
Tag:	Myc-DDK
Symbol:	MFSD5
Synonyms:	hsMOT2
Mammalian Cell Selection:	Neomycin
Vector:	pCMV6-Entry (PS100001)
E. coli Selection:	Kanamycin (25 ug/mL)



[View online »](#)

ORF Nucleotide Sequence:

>RC209777 ORF sequence
 Red=Cloning site Blue=ORF Green=Tags(s)

TTTTGTAATACGACTCACTATAGGGCGGCCGGGAATTCGTCGACTGGATCCGGTACCGAGGAGATCTGCC
 GCC**CGATCGCC**

ATGCTGGTGA**CTGCCTACCTTGCTTTTGTAGGCCTCCTGGCCTCCTGCCTGGGGCTGGA**ACTGTCAAGAT
 GCCGGCTAAACCCCTGGAAGGCCTGCAGCAATCCCTCCTTCCTCGTTTCAACTGGACTTCTATCA
 GGTCTACTTCTGGCCCTGGCAGCTGATTGGCTCAGGCCCTACCTCTATAAACTCTACCAGCATTAC
 TACTTCTGGAAGGTCAAATGGCATCCTCTATGTCTGTGGCCTGCCTCTACAGTCTCTTTGGCCTAG
 TGGCCTCCTCACTTGTGGATTGGCTGGTGCAGAAATTCTTGTCTCTTCTCCCTGACTTACTCACT
 ATGCTGCTTAACCAA**ACTCTCTCAAGACTACTTTGTGATGCTAGTGGGCGAGCACTTGGTGGGCTGTC**
 ACAGCCCTGCTTCTCAGCCTTCGAGGCCTGGTATATCCATGAGCACGTGGAACGGCATGACTTCCCTG
 CTGAGTGGATCCAGCTACCTTTGCTCGAGCTGCCTTCTGGAACCATGTGCTGGCTGTAGTGGCAGGTG
 GGCAGCTGAGGCTGTAGCCAGCTGGATAGGGCTGGGGCTGTAGCGCCCTTTGTGGCTGCCATCCCTCTC
 CTGGCTCTGGCAGGGCCTTGGCCCTTCGAAACTGGGGGAGA**ACTATGACCGGCAGCGTGCCTTCTCAA**
 GGACCTGTGCTGGAGGCCTGCGCTGCCTCCTGTGCGGACCGCCGCGTGTCTGCTGTTGGGCACCATAAAGC
 TCTATTTGAGAGTGTATCTTCTTTGTCTTCTGACACCTGTGCTGGACCCACACGGGGCCCT
 CTGGGCATTATCTTCTCCAGCTT**CATGGCAGCCAGCCTGCTTGGCTTCCCTGTACCGTATCGCCACCT**
 CCAAGAGGTACCACCTT**CAGCCCATGCACCTGCTGCCCTGCTGTGCTCATCGTCTTCTCTCTCTT**
 CATGTTGACTTTCTTACCAGCCAGGCCAGGAGAGTCCGGTGGAGTCCCTCATAGCCTTCTACTTATT
 GAGTTGGCTTGTGATTACTTTCCAGCATGAGCTTCTACGGAGAAAGGTGATCCCTGAGACAGAGC
 AGGCTGGTGA**CTCAACTGGTTCGGGTACCTGCACCTACTGGCTTGCCTAGGGCTCCTTGCCTCCA**
 TGACAGTGATCGAAAACAGGCACTCGGAATATGTT**CAGCATTGCTCTGCTGT**CATGGTATGGCTCTG
 CTGGCAGTGGTGGGACTTTCACCGTGGTAAGGCATGATGCTGAGCTGCGGGTACCTTACCTACTGAGG
 AGCCCTATGCCCTGAGCTG

ACGCGTACGCGGCCGCTCGAGCAGAACTCATCTCAGAAGAGGATCTGGCAGCAAATGATATCCTGGATT
 ACAAGGATGACGACGATAAGGTTTAA

Protein Sequence:

>RC209777 protein sequence
 Red=Cloning site Green=Tags(s)

MLVTAYLAFVGLLASCLGLELSRCRAKPPGRACSNPSFLRFQLDFYQVYFLALAADWLQAPYLKLYQHY
 YFLEGQIAILYVCGLASTVLFGLVASSLVDWLGRKN**SCVLFSL**TYSLCCLTKLSQDYFVMLVGRALGGLS
 TALLFSAFEAWYIHEHVERHDFPAEWIPATFARA**AFWNHVLAVVAGVAAEAVASWIGLGPVAPFVAAIPL**
 LALAGALALRNWGENYDRQRAF**SRTCAGGLRCLLSDRRVLLLGTIQALFESVIFVFLWTPVLDPHGAP**
 LGIIFSSFMAASLLGSSLYRIATSKRYHLQPMHLLSLAVLIVVFL**FMLTFSTSPGQESPVESFIAFLLI**
 ELACGLYFSPMSFLRRKVIPETE**QAGVLNWFVRPLHSLACLGLLVLHSDRKTGTRNMF**SICSAVMVMAL
 LAVVGLFTVVRHDAELRVSPTEEPY**APEL**

TRTRPLEQKLISEEDLAANDILDYKDDDDKV

Chromatograms:

https://cdn.origene.com/chromatograms/mk6147_h04.zip

Restriction Sites:

Sgfl-Mlul

Cloning Scheme:


ACCN: NM_032889

ORF Size: 1350 bp

OTI Disclaimer: The molecular sequence of this clone aligns with the gene accession number as a point of reference only. However, individual transcript sequences of the same gene can differ through naturally occurring variations (e.g. polymorphisms), each with its own valid existence. This clone is substantially in agreement with the reference, but a complete review of all prevailing variants is recommended prior to use. [More info](#)

OTI Annotation: This clone was engineered to express the complete ORF with an expression tag. Expression varies depending on the nature of the gene.

Components: The ORF clone is ion-exchange column purified and shipped in a 2D barcoded Matrix tube containing 10ug of transfection-ready, dried plasmid DNA (reconstitute with 100 ul of water).

Reconstitution Method:

1. Centrifuge at 5,000xg for 5min.
2. Carefully open the tube and add 100ul of sterile water to dissolve the DNA.
3. Close the tube and incubate for 10 minutes at room temperature.
4. Briefly vortex the tube and then do a quick spin (less than 5000xg) to concentrate the liquid at the bottom.
5. Store the suspended plasmid at -20°C. The DNA is stable for at least one year from date of shipping when stored at -20°C.

RefSeq: [NM_032889.5](#)

RefSeq Size: 1781 bp

RefSeq ORF: 1353 bp

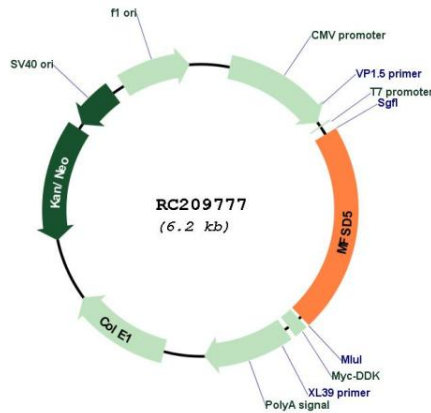
Locus ID: 84975

UniProt ID: [Q6N075](#)

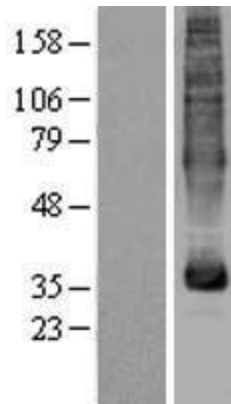
Cytogenetics: 12q13.13

Protein Families: Transmembrane
MW: 49.8 kDa
Gene Summary: Mediates high-affinity intracellular uptake of the rare oligo-element molybdenum. [UniProtKB/Swiss-Prot Function]

Product images:



Circular map for RC209777



Western blot validation of overexpression lysate (Cat# [LY403205]) using anti-DDK antibody (Cat# [TA50011-100]). Left: Cell lysates from untransfected HEK293T cells; Right: Cell lysates from HEK293T cells transfected with RC209777 using transfection reagent MegaTran 2.0 (Cat# [TT210002]).