

Product datasheet for **RC209766**

LRP15 (LRRC3B) (NM_052953) Human Tagged ORF Clone

Product data:

Product Type:	Expression Plasmids
Product Name:	LRP15 (LRRC3B) (NM_052953) Human Tagged ORF Clone
Tag:	Myc-DDK
Symbol:	LRP15
Synonyms:	LRP15
Mammalian Cell Selection:	Neomycin
Vector:	pCMV6-Entry (PS100001)
E. coli Selection:	Kanamycin (25 ug/mL)
ORF Nucleotide Sequence:	>RC209766 ORF sequence Red=Cloning site Blue=ORF Green=Tags(s)

TTTTGTAATACGACTCACTATAGGGCGCCGGGAATTCGTCGACTGGATCCGGTACCGAGGAGATCTGCC
GCC**CGATCGCC**

ATGAATCTGGTAGACCTGTGGTTAACCCGTTCCCTCTCCATGTGTCTCCTCCTACAAAGTTTTGTTCTTA
TGATACTGTGCTTTCATTCTGCCAGTATGTGTCCCAAGGGCTGTCTTTGTTCTCCTCTGGGGTTTAAA
TGTACCTGTAGCAATGCAAATCTCAAGGAAATACCTAGAGATCTTCTCCTGAAACAGTCTTACTGTAT
CTGGACTCCAATCAGATCACATCTATTCCAATGAAATTTTTAAGGACCTCCATCAACTGAGAGTTCTCA
ACCTGTCCAAAAATGGCATTGAGTTTATCGATGAGCATGCCTTCAAAGGAGTAGCTGAAACCTTGCAGAC
TCTGGACTTGCCGACAATCGGATTCAAAGTGTGCACAAAAATGCCTTCAATAACCTGAAGGCCAGGGCC
AGAATTGCCAACACCCCTGGCACTGCGACTGACTCTACAGCAAGTTCTGAGGAGCATGGCGTCCAATC
ATGAGACAGCCCAACGATCTGTAACCGTCCGTGTTGGATGAACATGCTGGCAGACCATTCCTCAA
TGCTGCCAACGACGCTGACCTTTGTAACCTCCCTAAAAAACTACCGATTATGCCATGCTGGTCACCATG
TTTGGCTGGTTCATATGGTATCTCATATGTGGTATATTATGTGAGGCAAAATCAGGAGGATGCCCGGA
GACACCTCGAATACTTGAAATCCCTGCCAAGCAGGCAGAAGAAAGCAGATGAACCTGATGATATTAGCAC
TGTGTA

ACGCGTACGCGGCCGCTCGAGCAGAAACTCATCTCAGAAGAGGATCTGGCAGCAAATGATATCCTGGATT
ACAAGGATGACGACGATAAGGTTTAA



Protein Sequence: >RC209766 protein sequence
Red=Cloning site Green=Tags(s)

MNLVDLWLTRSLSMCLLLQSFVLMILCFHSASMCPKGCLCSSSGGLNVTCSNANLKEIPRDLPPETVLLY
 LDSNQITSIIPNEIFKDLHLRVLNLSKNGIEFIDEHAFKGVATLQTLDSLSDNRIQSVHKNFNNLKARA
 RIANNPWHCDCTLQQVLRSMASNHETAHNVICKTSVLDEHAGRPFLNAANDADLCNLPKKTTDYAMLVTM
 FGWFTMVISYVVVYVRQNEQEDARRHLEYLKSLSRQKKADEPDDISTVV

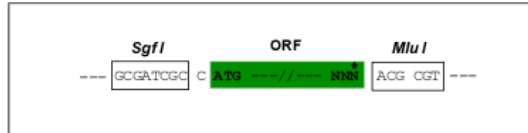
TRTRPLEQKLISEEDLAANDILDYKDDDDKV

Chromatograms: https://cdn.origene.com/chromatograms/mk6530_g12.zip

Restriction Sites: SgfI-MluI

Cloning Scheme:

Cloning sites used for ORF Shuttling:



* The last codon before the Stop codon of the ORF

ACCN: NM_052953

ORF Size: 777 bp

OTI Disclaimer: The molecular sequence of this clone aligns with the gene accession number as a point of reference only. However, individual transcript sequences of the same gene can differ through naturally occurring variations (e.g. polymorphisms), each with its own valid existence. This clone is substantially in agreement with the reference, but a complete review of all prevailing variants is recommended prior to use. [More info](#)

OTI Annotation: This clone was engineered to express the complete ORF with an expression tag. Expression varies depending on the nature of the gene.

Components: The ORF clone is ion-exchange column purified and shipped in a 2D barcoded Matrix tube containing 10ug of transfection-ready, dried plasmid DNA (reconstitute with 100 ul of water).

Reconstitution Method:

1. Centrifuge at 5,000xg for 5min.
2. Carefully open the tube and add 100ul of sterile water to dissolve the DNA.
3. Close the tube and incubate for 10 minutes at room temperature.
4. Briefly vortex the tube and then do a quick spin (less than 5000xg) to concentrate the liquid at the bottom.
5. Store the suspended plasmid at -20°C. The DNA is stable for at least one year from date of shipping when stored at -20°C.

Note: Plasmids are not sterile. For experiments where strict sterility is required, filtration with 0.22um filter is required.

RefSeq: [NM_052953.3](#)

RefSeq Size: 1718 bp

RefSeq ORF: 780 bp

Locus ID: 116135

UniProt ID: [Q96PB8](#)

Cytogenetics: 3p24.1

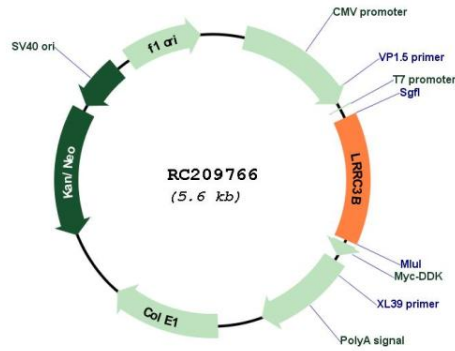
Domains: LRRNT, LRR, LRR_TYP

Protein Families: Transmembrane

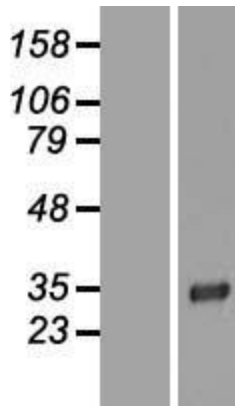
MW: 29.3 kDa

Gene Summary: The protein encoded by this gene is a tumor suppressor, with lowered expression levels found in gastric, renal, colorectal, lung, and breast cancer tissues. The promoter of this gene is frequently hypermethylated in these cancer tissues, although the hypermethylation does not appear to be the cause of the reduced expression of this gene. Several transcript variants encoding the same protein have been found for this gene. [provided by RefSeq, Dec 2015]

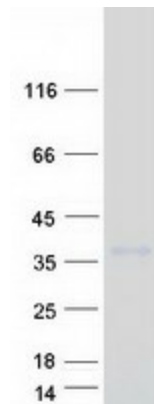
Product images:



Circular map for RC209766



Western blot validation of overexpression lysate (Cat# [LY409370]) using anti-DDK antibody (Cat# [TA50011-100]). Left: Cell lysates from untransfected HEK293T cells; Right: Cell lysates from HEK293T cells transfected with RC209766 using transfection reagent MegaTran 2.0 (Cat# [TT210002]).



Coomassie blue staining of purified LRR3B protein (Cat# [TP309766]). The protein was produced from HEK293T cells transfected with LRR3B cDNA clone (Cat# RC209766) using MegaTran 2.0 (Cat# [TT210002]).