

Product datasheet for **RC209762**

Activator of basal transcription 1 (ABT1) (NM_013375) Human Tagged ORF Clone

Product data:

Product Type:	Expression Plasmids
Product Name:	Activator of basal transcription 1 (ABT1) (NM_013375) Human Tagged ORF Clone
Tag:	Myc-DDK
Symbol:	Activator of basal transcription 1
Synonyms:	Esf2; hABT1
Mammalian Cell Selection:	Neomycin
Vector:	pCMV6-Entry (PS100001)
E. coli Selection:	Kanamycin (25 ug/mL)
ORF Nucleotide Sequence:	>RC209762 ORF sequence Red=Cloning site Blue=ORF Green=Tags(s)

TTTTGTAATACGACTCACTATAGGGCGCCGGGAATTCGTCGACTGGATCCGGTACCGAGGAGATCTGCC
GCC**CGATCGCC**

ATGGAGGCAGAGGAATCGGAGAAGGCCGCAACGGAGCAAGAGCCGCTGGAAGGGACAGAACAGACTAG
ATGCGGAGGAGGAGCAGGAGGAATCCGAAGAAGCGCCTGTGGCAGCAAGAAACGGGTAGTGCCAGGTAT
TGTGTACCTGGCCATATCCGCGCGCTTCCGGCCCTGCACGTCCGCAACCTTCTCAGCGCTATGGC
GAGGTCGGACCGCTTCTTTTCAGGCTGAGGACCGGTTTCGTGAGACGCAAGAAGAAGGCAGCAGCAGCTG
CCGGAGGAAAAAAGCGGTCTACACCAAGGACTACACCGAGGGATGGGTGGAGTTCGTCGACAAGCGCAT
AGCCAAGCGCGTGGCGGCCAGTCTACACAACACGCTATGGGTGCCCGCAGGCGCAGCCCTTCCGTTAT
GATCTTTGGAACCTCAAGTACTTGCACCGTTTACCTGGTCCCACCTCAGCGAGCACCTCGCCTTTGAGC
GCCAGGTGCGCAGGCAGCGCTTGAGAGCGGAGGTTGCTCAAGCCAAGCGTGAGACCGACTTCTATCTTCA
AAGTGTGGAACGGGGACAACGCTTTCTTTCGGCCGATGGGGACCCTGCTCGCCAGATGGCTCCTGGACA
TTTGCCAGCGTCTACTGAGCAGGAAGTGAAGGCGCCGTAAGCAGCACGGCCAGGGGACGTGAACGGG
CTCGCCTGGCAACTGCCAGGACAAGGCCCGCTCCAACAAGGACTCCTGGCCAGGATCTTTGGAGCCCC
GCCACCCTCAGAGAGCATGGAGGGACCTTCCCTTGTCAGGGACTCC

AG**CGGACCG**ACGCGTACGCGCCGCTCGAGCAGAAACTCATCTCAGAAGAGGATCTGGCAGCAAATGATATCC
TGGATTACAAGGATGACGACGATAAGGTTTAA



[View online »](#)

Protein Sequence: >RC209762 protein sequence
Red=Cloning site Green=Tags(s)

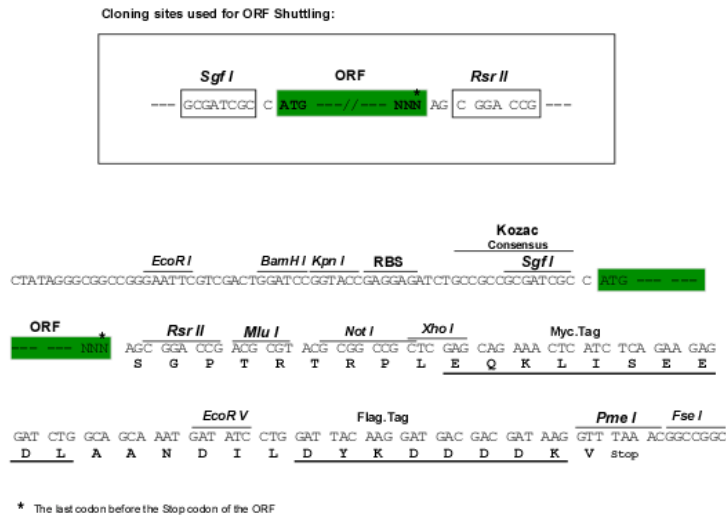
MEAESEKAATEQEPLEGTEQTLDAEEEQEESAAACGSKKRVVPGIVYLGHIPPRFRPLHVRNLLSAYG
 EVGRVFFQAEDRFVRRKKAAAAAGGKKRSYTKDYTEGWVEFRDKRIAKRVAASLHNTPMGARRRSPFRY
 DLWNLKYLHRFTWSHLSEHLAFERQVRRQRLRAEVAQAKRETDYFYLQSVERGQRF LAADGDPARPDGWSW
 FAQRPTQEQLRARKAARPGGRERARLATAQDKARSNKGLLARIFGAPPPSESMEGPSLVRDS

SGPTRTRPLEQKLI SEEDLAANDILDYKDDDDKV

Chromatograms: https://cdn.origene.com/chromatograms/mk6616_c07.zip

Restriction Sites: SgfI-RsrII

Cloning Scheme:



ACCN: NM_013375

ORF Size: 816 bp

OTI Disclaimer: The molecular sequence of this clone aligns with the gene accession number as a point of reference only. However, individual transcript sequences of the same gene can differ through naturally occurring variations (e.g. polymorphisms), each with its own valid existence. This clone is substantially in agreement with the reference, but a complete review of all prevailing variants is recommended prior to use. [More info](#)

OTI Annotation: This clone was engineered to express the complete ORF with an expression tag. Expression varies depending on the nature of the gene.

Components: The ORF clone is ion-exchange column purified and shipped in a 2D barcoded Matrix tube containing 10ug of transfection-ready, dried plasmid DNA (reconstitute with 100 ul of water).

Reconstitution Method:

1. Centrifuge at 5,000xg for 5min.
2. Carefully open the tube and add 100ul of sterile water to dissolve the DNA.
3. Close the tube and incubate for 10 minutes at room temperature.
4. Briefly vortex the tube and then do a quick spin (less than 5000xg) to concentrate the liquid at the bottom.
5. Store the suspended plasmid at -20°C. The DNA is stable for at least one year from date of shipping when stored at -20°C.

RefSeq: [NM_013375.4](#)

RefSeq Size: 2264 bp

RefSeq ORF: 819 bp

Locus ID: 29777

UniProt ID: [Q9ULW3](#)

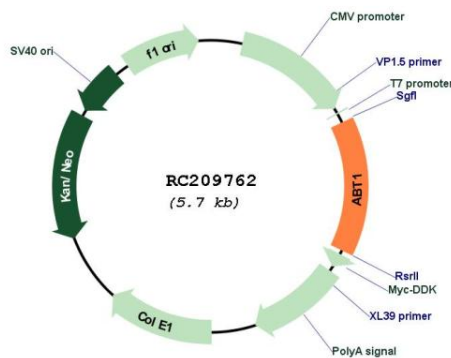
Cytogenetics: 6p22.2

Protein Families: Transcription Factors

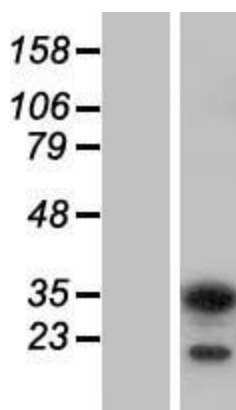
MW: 31.1 kDa

Gene Summary: Basal transcription of genes by RNA polymerase II requires the interaction of TATA-binding protein (TBP) with the core region of class II promoters. Studies in mouse suggest that the protein encoded by this gene likely activates basal transcription from class II promoters by interaction with TBP and the class II promoter DNA. [provided by RefSeq, Jul 2008]

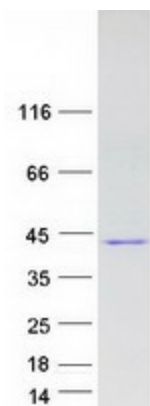
Product images:



Circular map for RC209762



Western blot validation of overexpression lysate (Cat# [LY415635]) using anti-DDK antibody (Cat# [TA50011-100]). Left: Cell lysates from untransfected HEK293T cells; Right: Cell lysates from HEK293T cells transfected with RC209762 using transfection reagent MegaTran 2.0 (Cat# [TT210002]).



Coomassie blue staining of purified ABT1 protein (Cat# [TP309762]). The protein was produced from HEK293T cells transfected with ABT1 cDNA clone (Cat# RC209762) using MegaTran 2.0 (Cat# [TT210002]).